

NOVEMBER 18, 2021

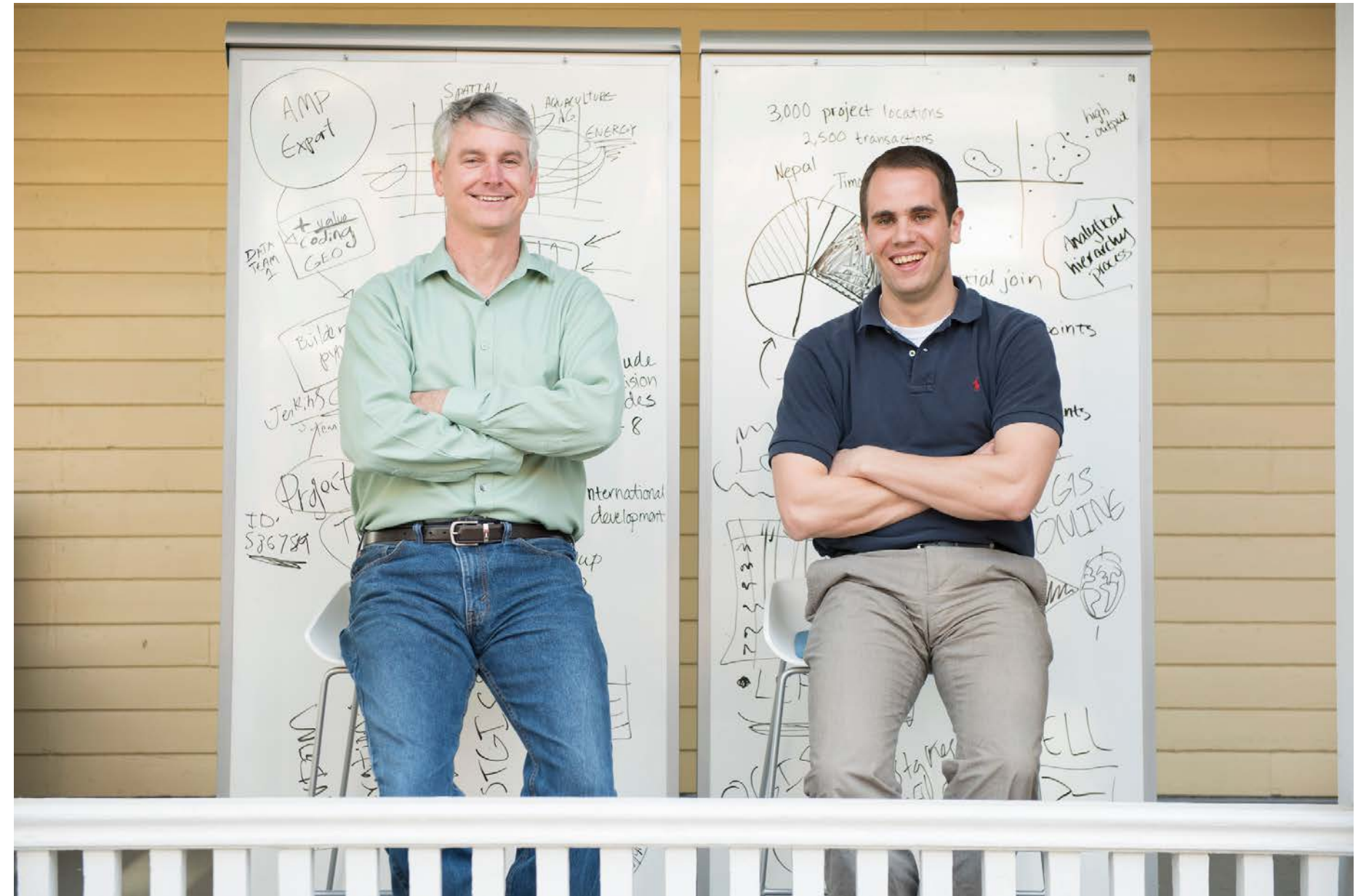
Global Research Institute (GRI)

W&M's multidisciplinary hub for applied global research



Origin

Honors Thesis ->
Green Leafe ->
Dataset ->
World Bank



Mission

We exist to empower teams of William & Mary students and faculty to make a difference in the world. We are a multidisciplinary hub that applies scholarly research to real world problems, investing in outstanding student and faculty scholars to catalyze new insights and cultivate the next generation of global leaders.



GRI Researchers

Our approach, in partnership with top faculty across the university, achieves research of consequence



Impact

GRI:

- Has brought in over \$73 million in external grants
- Has 50+ full time research staff, supports 25+ active research faculty, and employs 200+ students
- Supports 10 active research labs
- Manages an annual budget of over \$7 million
- Work is featured in elite media (Washington Post, Economist, NYTimes)



Our Structure

GRI RESEARCH LABS

Office of
the Provost

Global
Research
Institute

AIDDATA

ABC

ARC

BLOCKCHAIN

DIG

IGNITE

IJL

NUKELAB

PIPS

TRIP



Invest in Culture & People to Explore Problems

**GRI
APPROACH**

Create & Support
Diverse Research
Teams

Collaborate with
Internal & External
Partners

Produce Applied
Research

Share Insights with
Those who Make
& Shape Policy

Catyalyze
Resources



Flywheel in Action

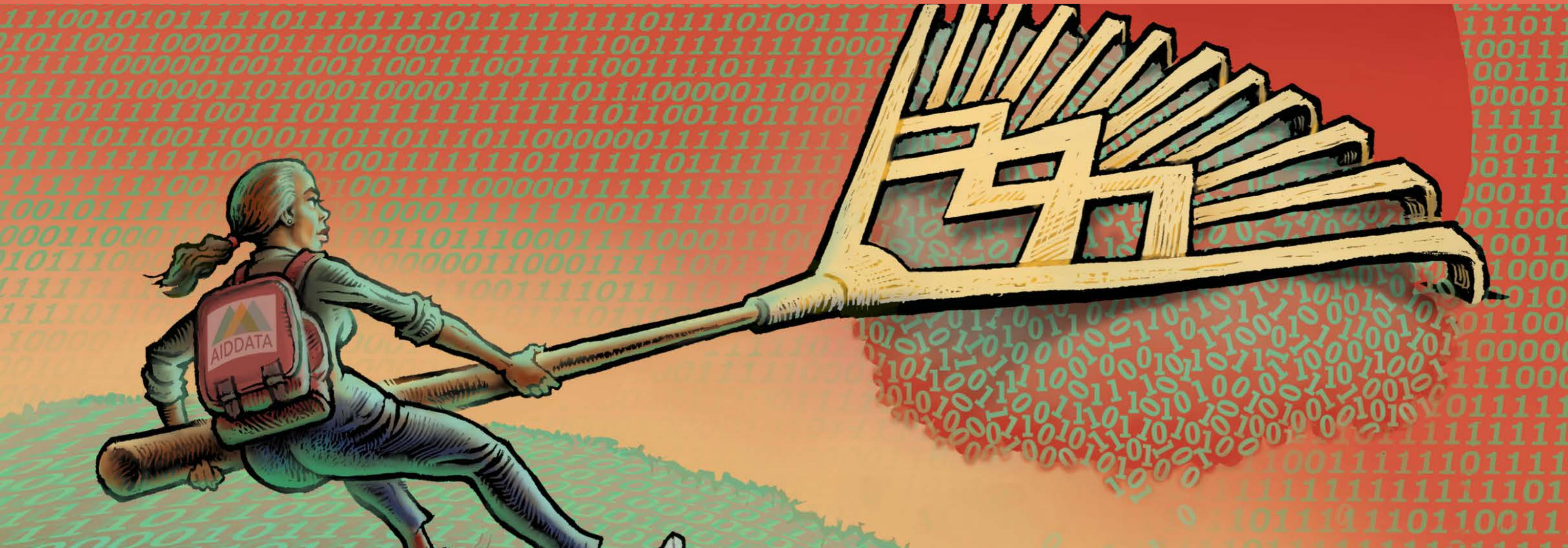
3 EXAMPLES

1. Tracking Chinese Development Finance
2. Digital Inclusion & Governance
3. Post-Doctoral Fellowship for Academic Diversity



Flywheel in Action

TRACKING CHINESE DEVELOPMENT FINANCE



A \$50,000 pilot of a student idea to track and better understand Chinese activities led to investments of more than \$4 million.



Flywheel in Action

DIGITAL INCLUSION & GOVERNANCE



A \$20,000 pilot on mobile phones and women's empowerment in Africa led to investments of more than \$900,000 (from Gates/IPA).



Flywheel in Action

POST-DOCTORAL FELLOWSHIP FOR ACADEMIC DIVERSITY



This pilot has led to increased research participation from non-traditional student groups, increased production of basic research, increased public scholarship and visibility for W&M, and increased support for Tenure Eligible W&M faculty in pursuit of external funding.



Partners & Reach



The New York Times



THE WALL STREET JOURNAL.

OXFORD
UNIVERSITY PRESS



MacArthur
Foundation



The Washington Post

cloudera



The
Economist



WORLD BANK GROUP

BILL & MELINDA
GATES foundation



What's Next? Vision 2026

VISION 2026

Framework for Planning In, Fall 2021



What's Next? Vision 2026

1. Accelerate the GRI flywheel through core support for research infrastructure
2. Global Scholars Program
3. Post-Doctoral Fellowship for Academic Diversity
4. University wide research & innovation initiative?

