



WILLIAM & MARY

CHARTERED 1693

GEOLAB @ W&M

Student Powered, Data Driven

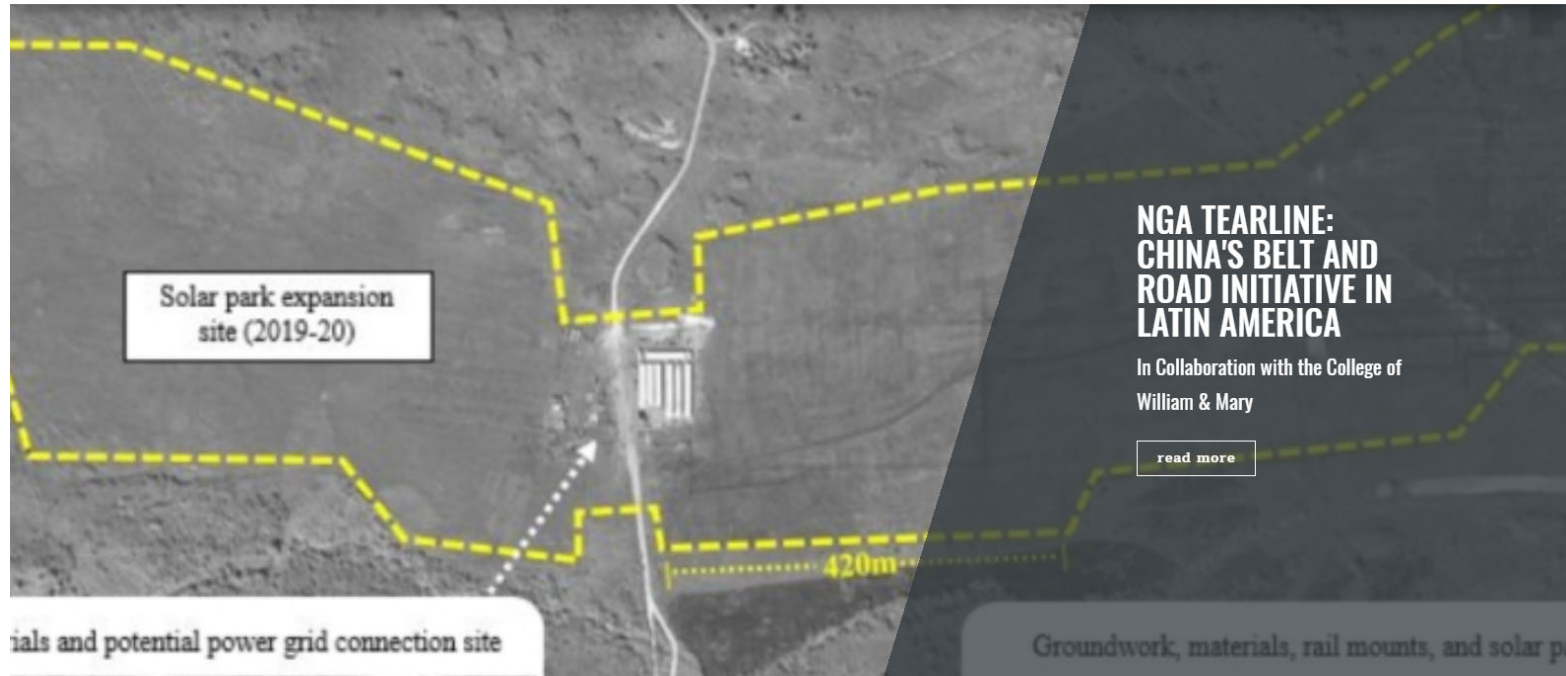


Disrupting the relationship
between research & teaching
at William & Mary.



RESEARCH IS TEACHING

INTEL.gov THE PUBLIC'S DAILY BRIEF / PUBLIC'S DAILY BRIEF ARTICLES



RESEARCH IS TEACHING

75

Undergraduate
Students (2021)

\$2.1M

Research grants
since 2018

17

Leadership
Fellows

9

COVID-era
Publications

23

Peer Reviewed
Student coauthors

100%

Full time job
placements

RESEARCH LEADERSHIP

W&M Students as Leaders – roadRunner



roadRunner project managed by Jason Lin, W&M undergraduate student



Lin recruited students at 6 universities in Virginia to make 6 teams of 5 students



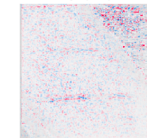
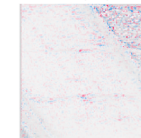
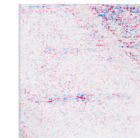
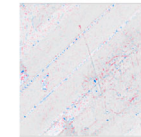
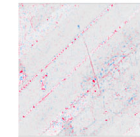
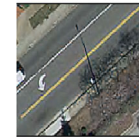
Each team of 5 students was led by a W&M geoLab student



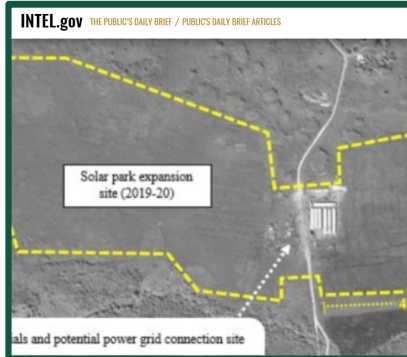
W&M geoLab student leaders engaged directly with external partner

Project Outcomes

- ✓ Follow up external funding to support project continuation
- ✓ Peer reviewed publication with student authors
- ✓ Second paper under review



IMPACTING THE WORLD



Promoting food security with the FAO, satellites and machine learning.



Bolstering US Intelligence Collection.



Supporting US citizens trapped in contentious environments.



Defining the world's boundaries with the UN.



Thank you to our funders:

Commonwealth Cyber
Initiative

McGovern Foundation
Cloudera Foundation

The Medical Foundation
Department of Homeland
Security

Contact Information:

geoLab@gmail.com

danr@wm.edu

ohhettinger@email.wm.edu

URL: geolab.wm.edu