



WILLIAM & MARY

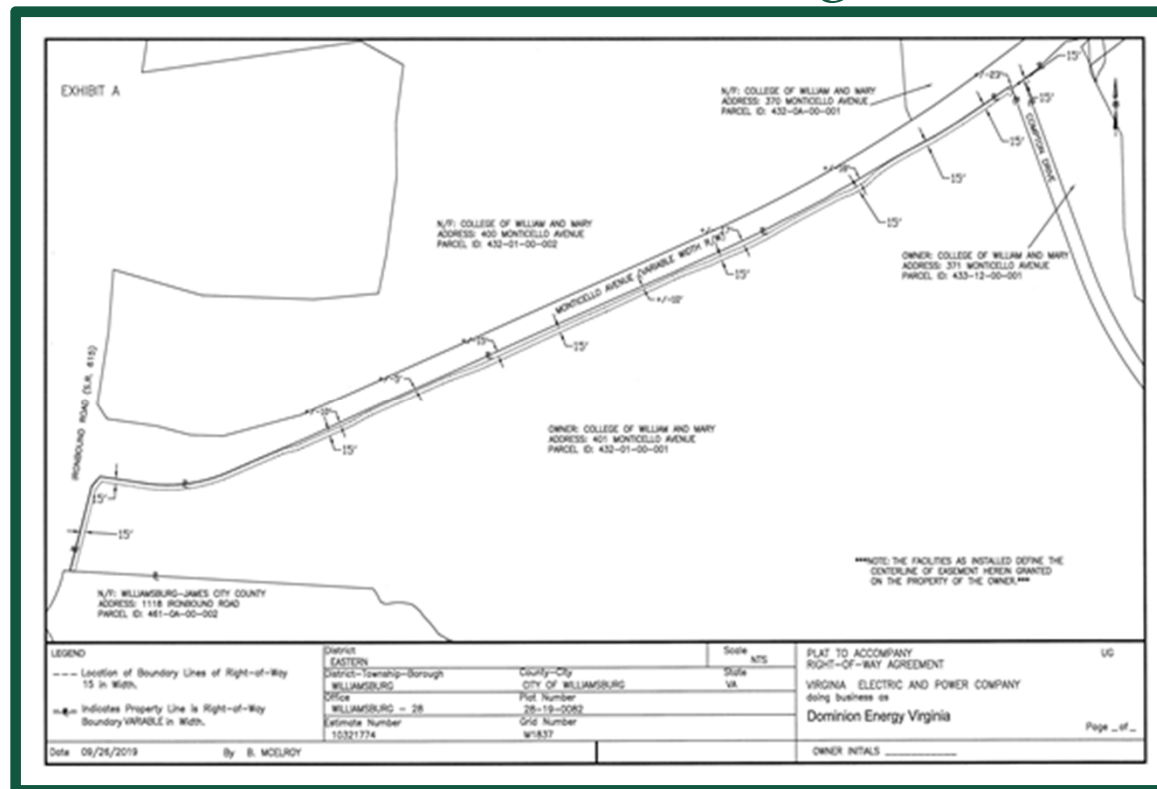
CHARTERED 1693

# ADMINISTRATION/ BUILDINGS & GROUNDS

*November 21, 2019*

# RESOLUTION # 4

- Approve Electrical Easement Serving Monticello Avenue





WILLIAM & MARY

CHARTERED 1693

# W&M SUSTAINABILITY

Board of Visitors

*November 2019*

# W&M SUSTAINABILITY

Sustainability encompasses the dynamic interactions between **society** and the **environment**, both natural and human-driven, operating in ways that improve the well-being of all.

This recognizes the natural changes of the environment and the multiple dimensions of society, such as **individual well-being, culture, the economy, and governance**; systems that are integrally connected.





# GREEN FEE

1.5+ million in projects over 11 yrs



# GREEN REVOLVING FUND

## Green to Gold Sustainability Fund

### Parking Deck Lighting

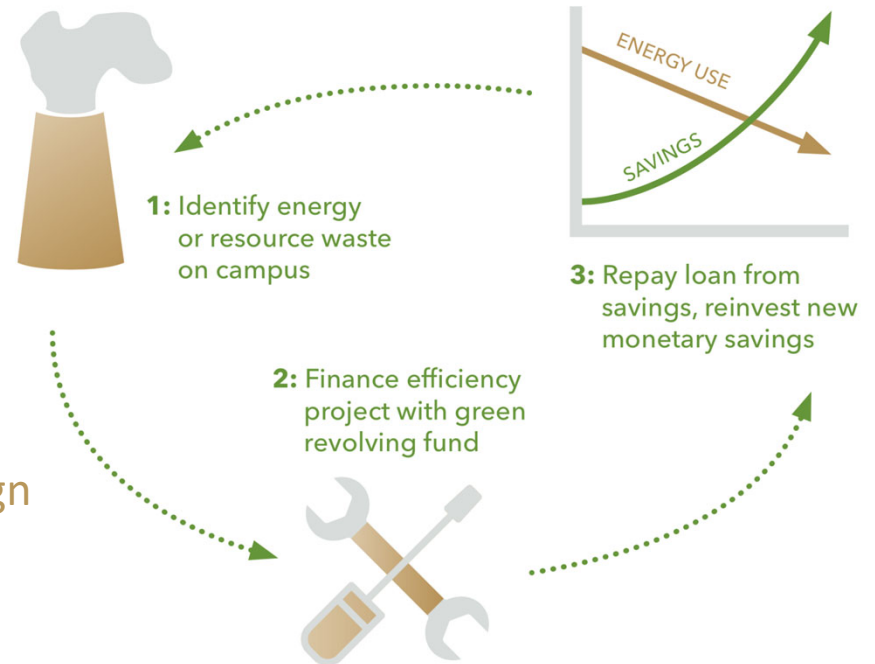
\$78,500 loan

\$170,000 saved over 3 yrs

536,750 lbs CO<sub>2</sub>e avoided



First public VA university to sign the Billion Dollar Green Challenge.



# SUSTAINABILITY PLAN

## Focus Areas

Campus Planning & Culture  
Academics & Engagement  
Energy & Climate  
Operations



SUSTAINABILITY PLAN

# DINING SERVICES



Eliminated the distribution of single-use plastics in Commons Dining and Sadler Court

Straw by request program

Green Restaurant  
Certifications



# COMMUNITY ENGAGEMENT

## 7 Generations

OCE Preorientation

Social, environmental,  
economic tracks

T-shirts to bags donated to  
local food pantry

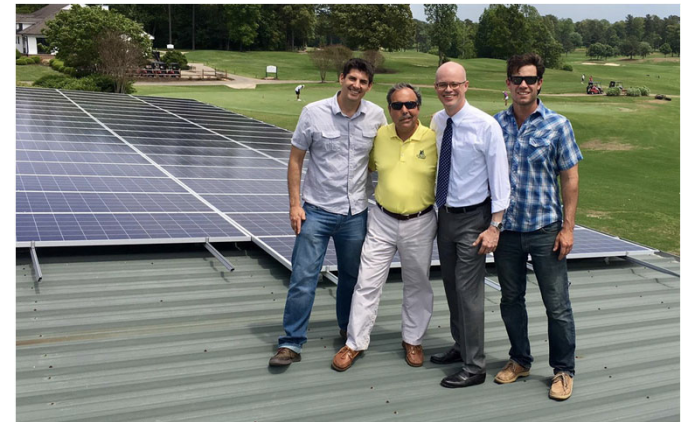


# RENEWABLE ENERGY

Onsite Solar  
Power Purchase Agreement  
Virginia Solar Congress



This event is organized by Solar United Neighbors, in partnership with William & Mary.



# CLIMATE ACTION



SUSTAINABILITY PLAN

★ **GOAL:** Finalize a Climate Action Plan by 2020 that includes the sourcing of renewable energy and an ambitious carbon neutrality date.

# DIRECTION

## The Climate Action Plan will:

- Reflect the **mission, history, and geo-political position** of the university.
- Be **whole-institution** and **W&M specific**.
- Define a clear roadmap to **carbon neutrality** by an ambitious date.
- **Inform and empower** students, faculty and staff.
- Reflect our **potential as a liberal arts and research institution** to address the challenges of climate change.

# WORKING GROUPS

Curriculum & Research  
Resilience  
Carbon Neutrality 1&2  
Carbon Credits  
Transportation

Diversion  
Food  
GHG Reporting  
Study Abroad  
Behavior Change



THANK YOU

Calandra Waters Lake  
Director of Sustainability  
[waterslake@wm.edu](mailto:waterslake@wm.edu)