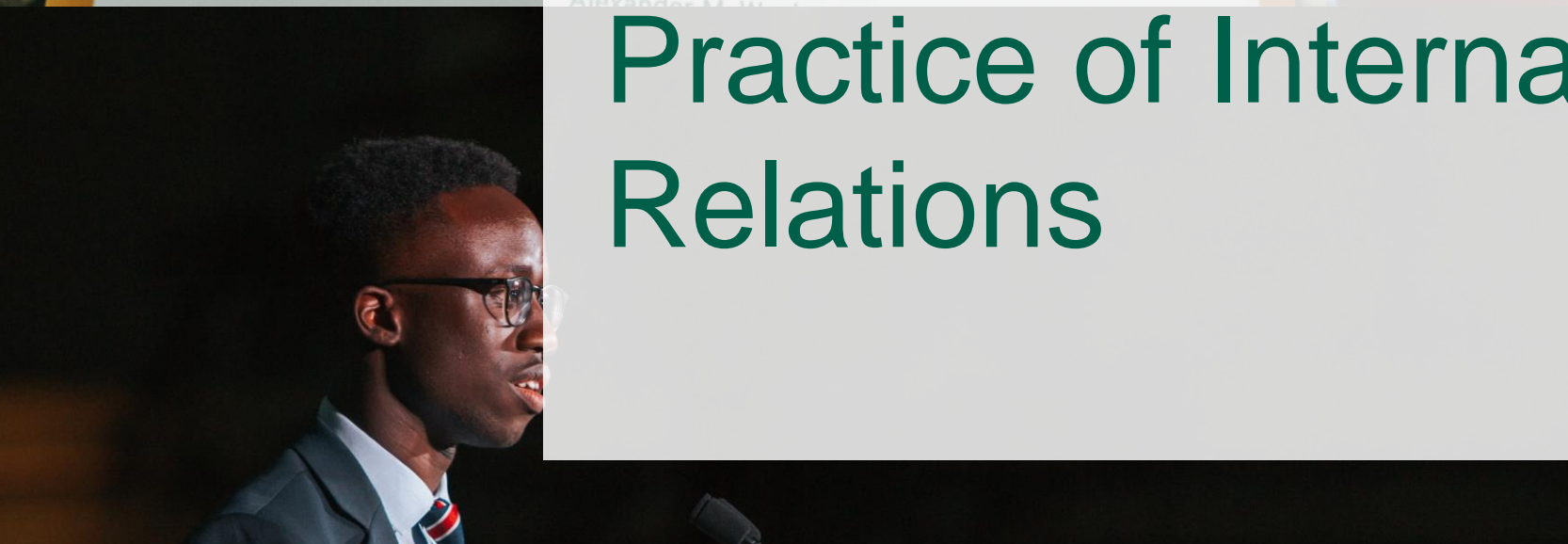
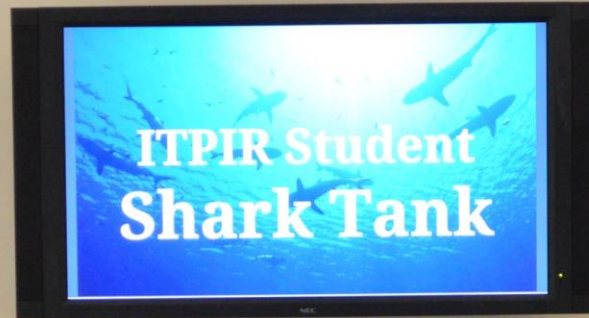


**PASSION FOR  
IMPACT**  
INFLUENCING THE WORLD

Understanding where aid goes and how it is used, and  
measuring the impact of foreign assistance.

Dr. Michael J. Tierney, '10, is the  
George and Mary Hooten Professor of Government and  
International Relations and Director, AidData and ITPIR  
Alexander M. ...

# AidData and the Institute for the Theory and Practice of International Relations



**AIDDATA**

A Research Lab at William & Mary



**WILLIAM & MARY**

CHARTERED 1693





AidData is a research and innovation lab making development finance information accessible and actionable.

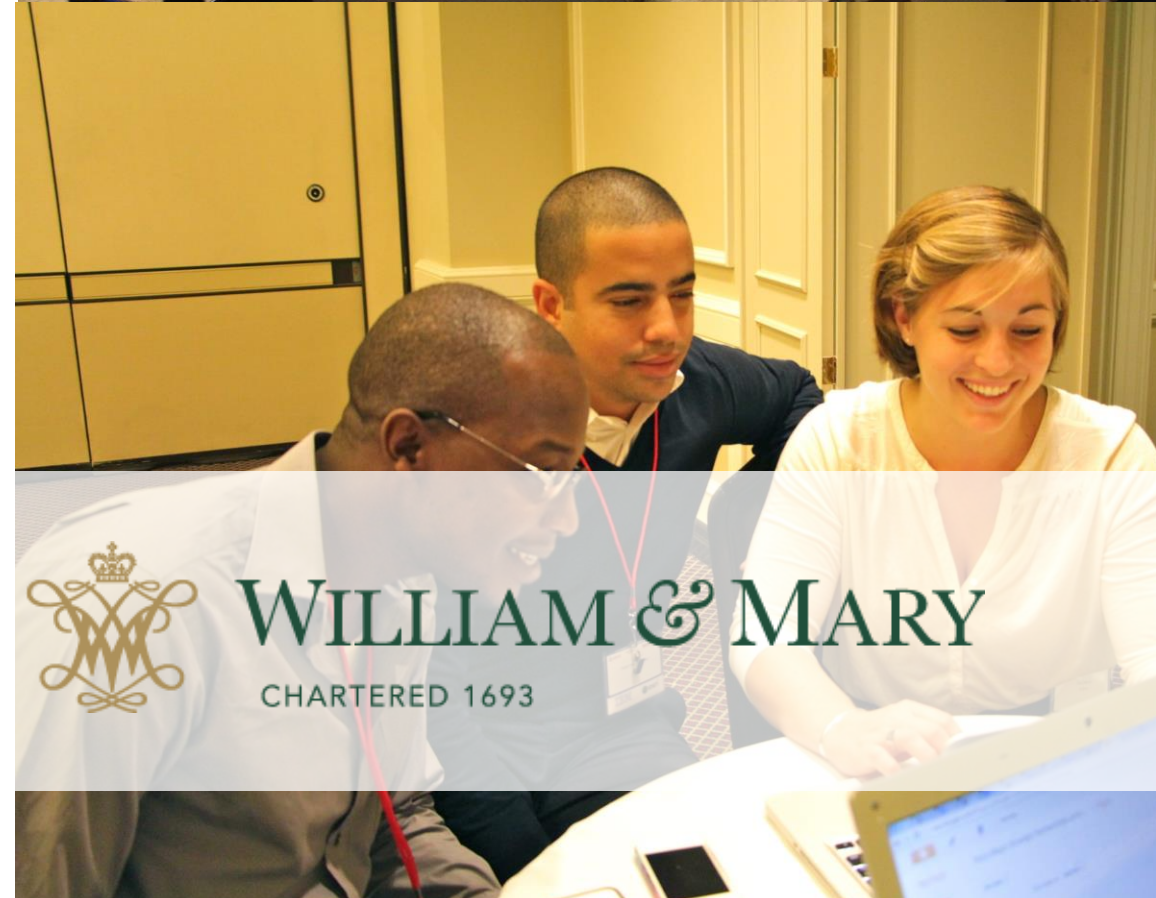




# AidData Operations at a Glance

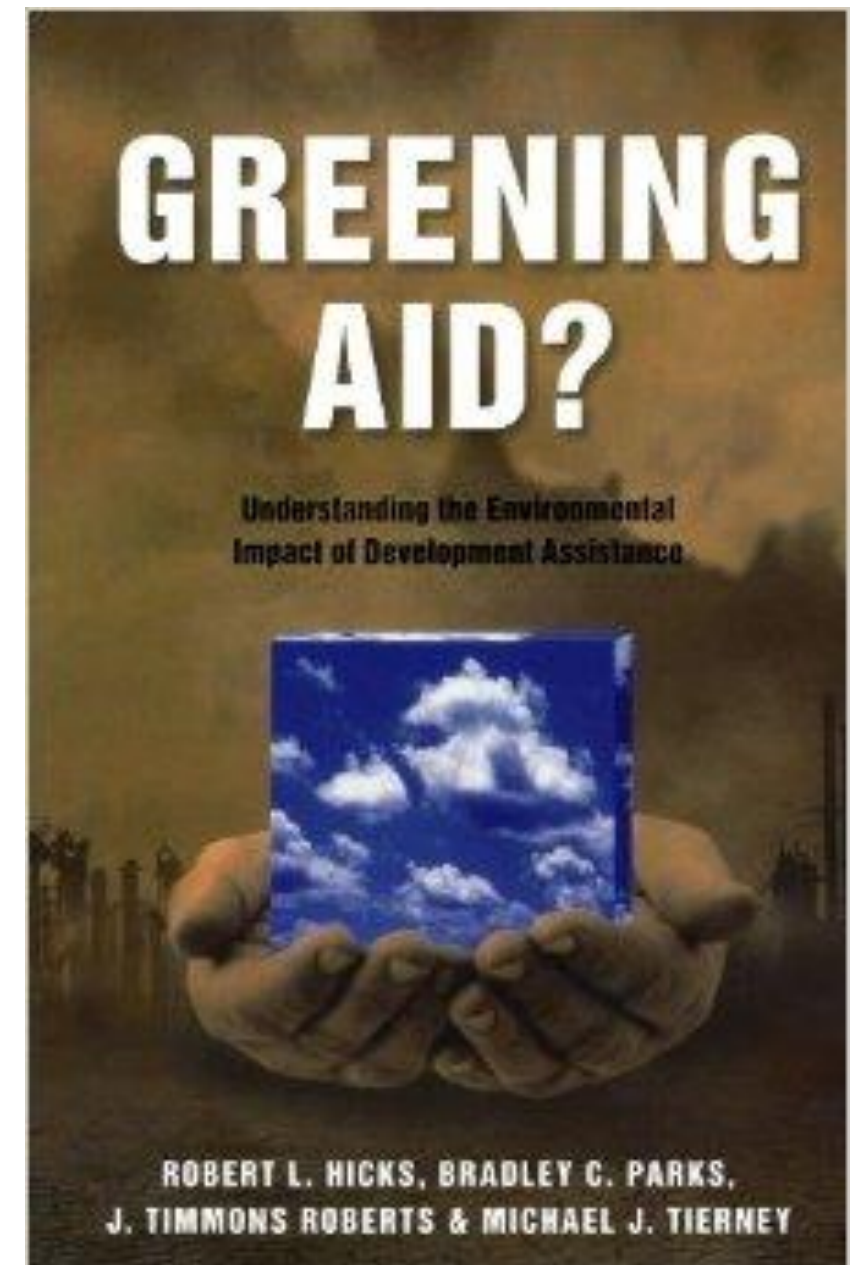
- 10+ years making development finance more transparent and accountable
- Field operations and partnerships in ~20 countries
- Manages research consortium with over 100 scholars from 50 universities
- Funding from and partnerships with bilaterals, multilaterals, private foundations

**AIDDATA**  
A Research Lab at William & Mary



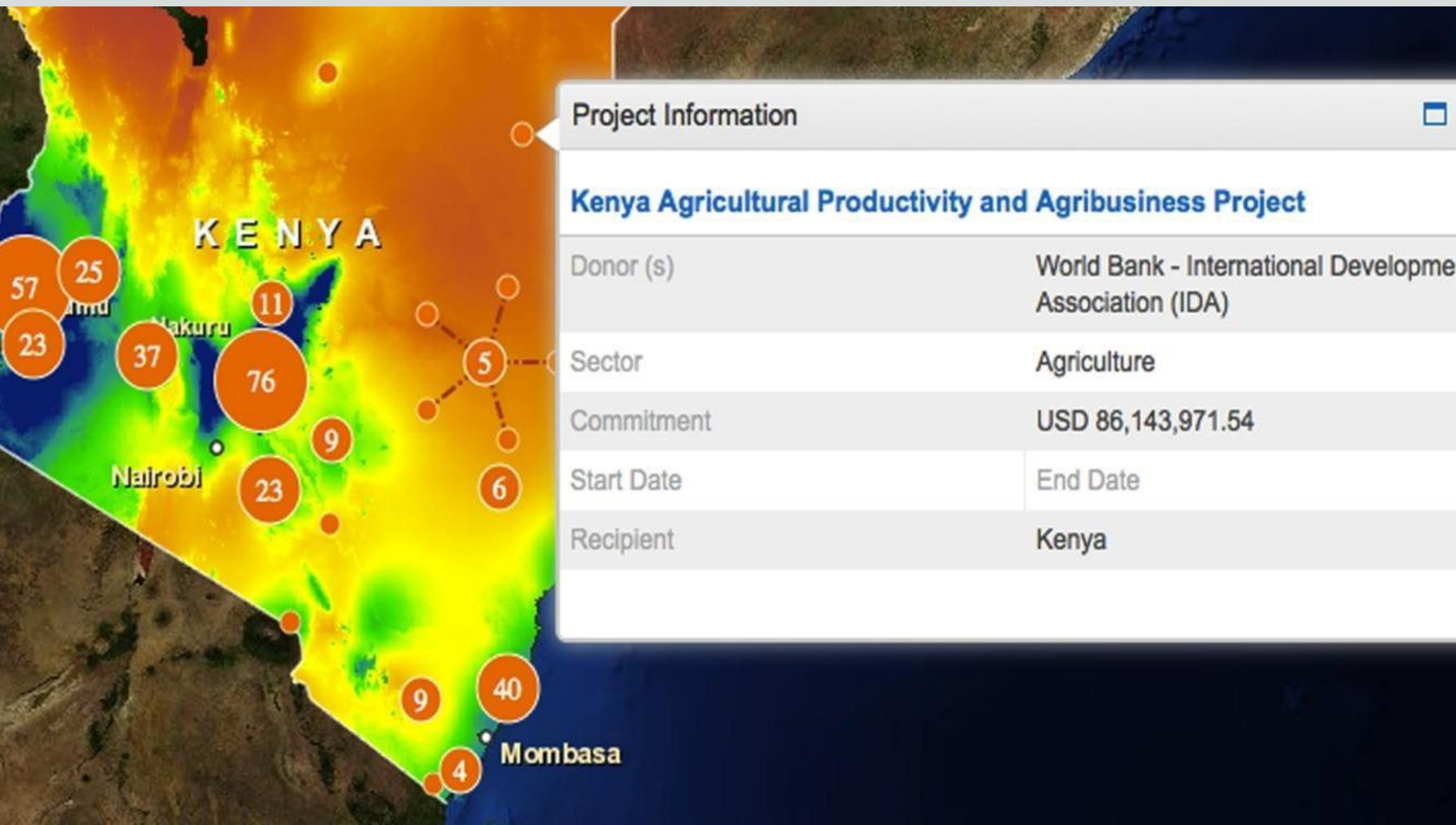
# Origins of AidData

- 2003 student-faculty research project
- Environment and Development: Aid Allocation and Impact
- But...Need Better Data... Missing Data... Inaccurately Categorized Data
- NSF
- Real-world interest: World Bank and MCC
- Gates and Hewlett Funding: AidData 1.0
- Most comprehensive Project-Level Database
  - Over 1 million rows
  - More granular and accurate





**Geocoding:** the process of finding and assigning geographic coordinates to a development project.

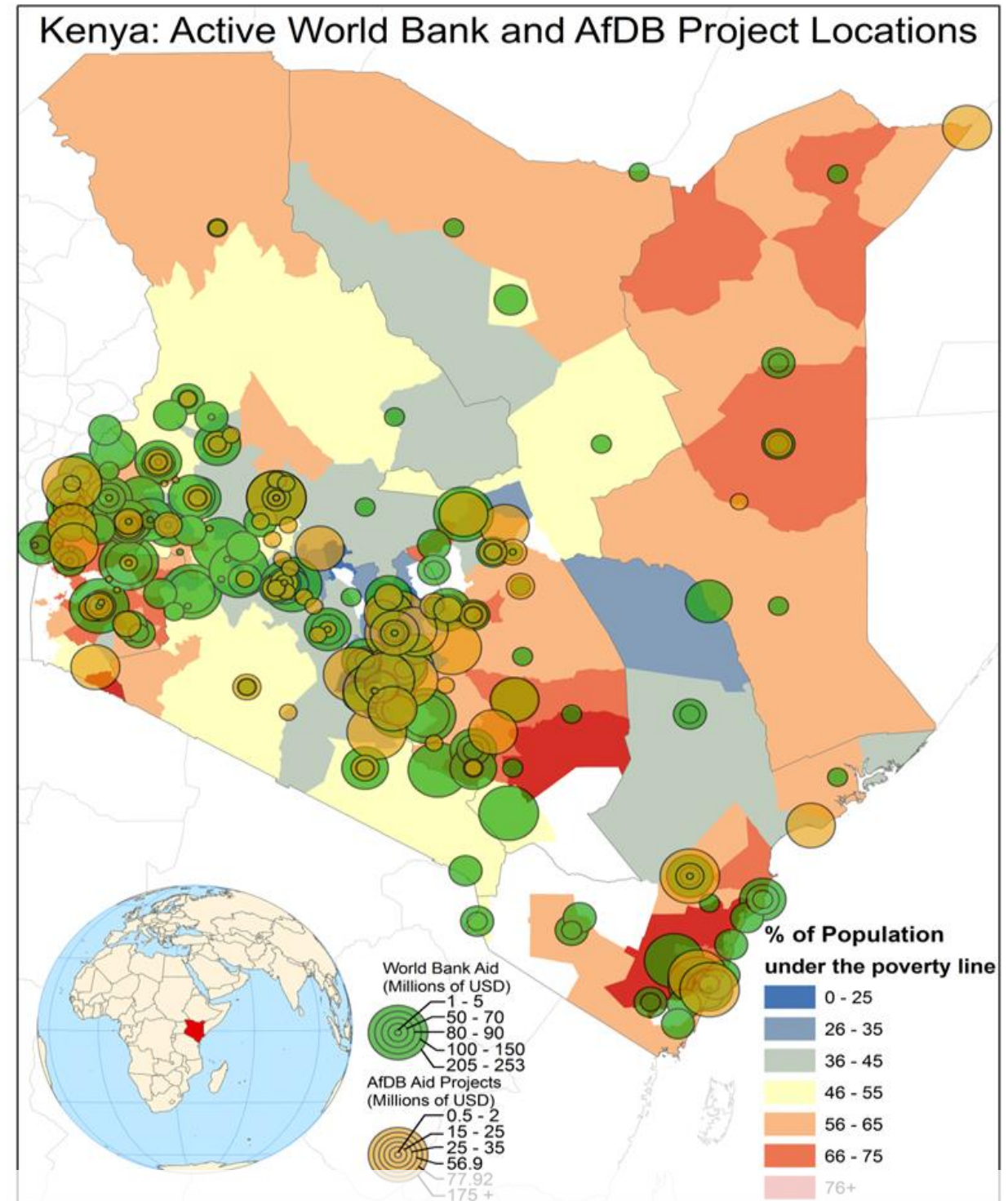


# Proving the concept: Mapping for Results (2010)

“This is a critical step toward being able to ask the right questions about whether aid is going to the right places and what impact it has.”

SIMON MIZRAHI,  
Manager of the African Development  
Bank's Quality Assurance and Results  
Department

**AIDDATA**  
A Research Lab at William & Mary



**WILLIAM & MARY**  
CHARTERED 1693

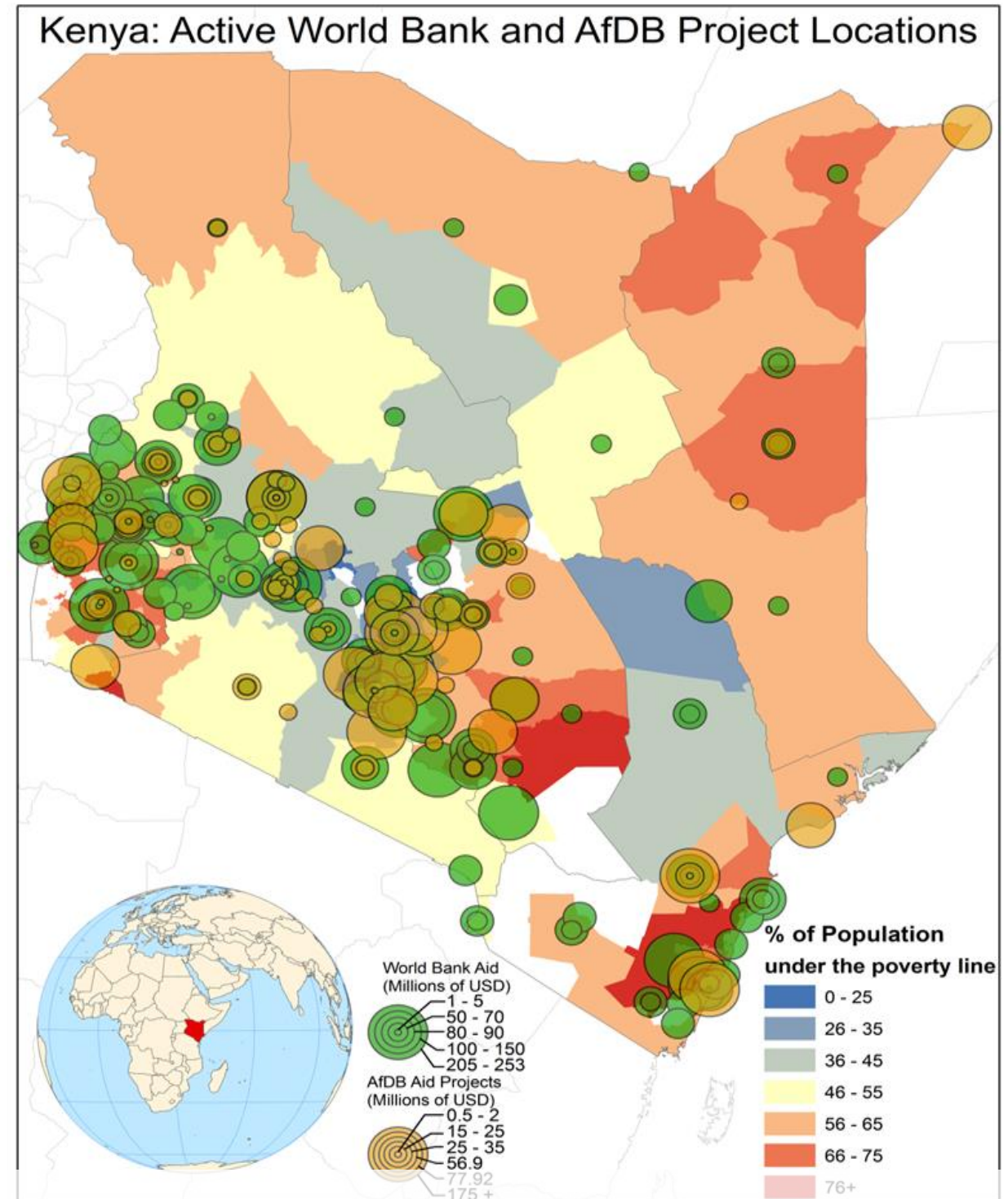


# Proving the concept: Mapping for Results (2010)

“[AidData] took our geo-coded project data and data on project performance... and then mapped it against sub-national violence data .... Their surprising results challenged our conventional wisdom.”

CAROLINE ANSTEY,  
World Bank Managing Director

**AIDDATA**  
A Research Lab at William & Mary



**WILLIAM & MARY**  
CHARTERED 1693

# Ethnic Power Relations and Aid Distribution

Ogaden, traditional home to politically-excluded Somalis, receives few World Bank projects compared to other regions.



## Ethnic Groups

- |                       |                            |
|-----------------------|----------------------------|
| 1 - Afar              | 5 - Oroma                  |
| 2 - Amhara            | 6 - Other Southern Nations |
| 3 - Beni-Shugal-Gumez | 7 - Somali (Ogaden)        |
| 4 - Harari            | 8 - Tigry                  |

## Ethnic Group Status

- |                   |                |
|-------------------|----------------|
| REGIONAL AUTONOMY | JUNIOR PARTNER |
| SENIOR PARTNER    | DISCRIMINATED  |
|                   | No Data        |

○ World Bank Aid Location

Density of Conflict  
Points per SqKm



WILLIAM & MARY

CHARTERED 1693

AIDDATA

A Research Lab at William & Mary

0.0281

0.0225

0.017

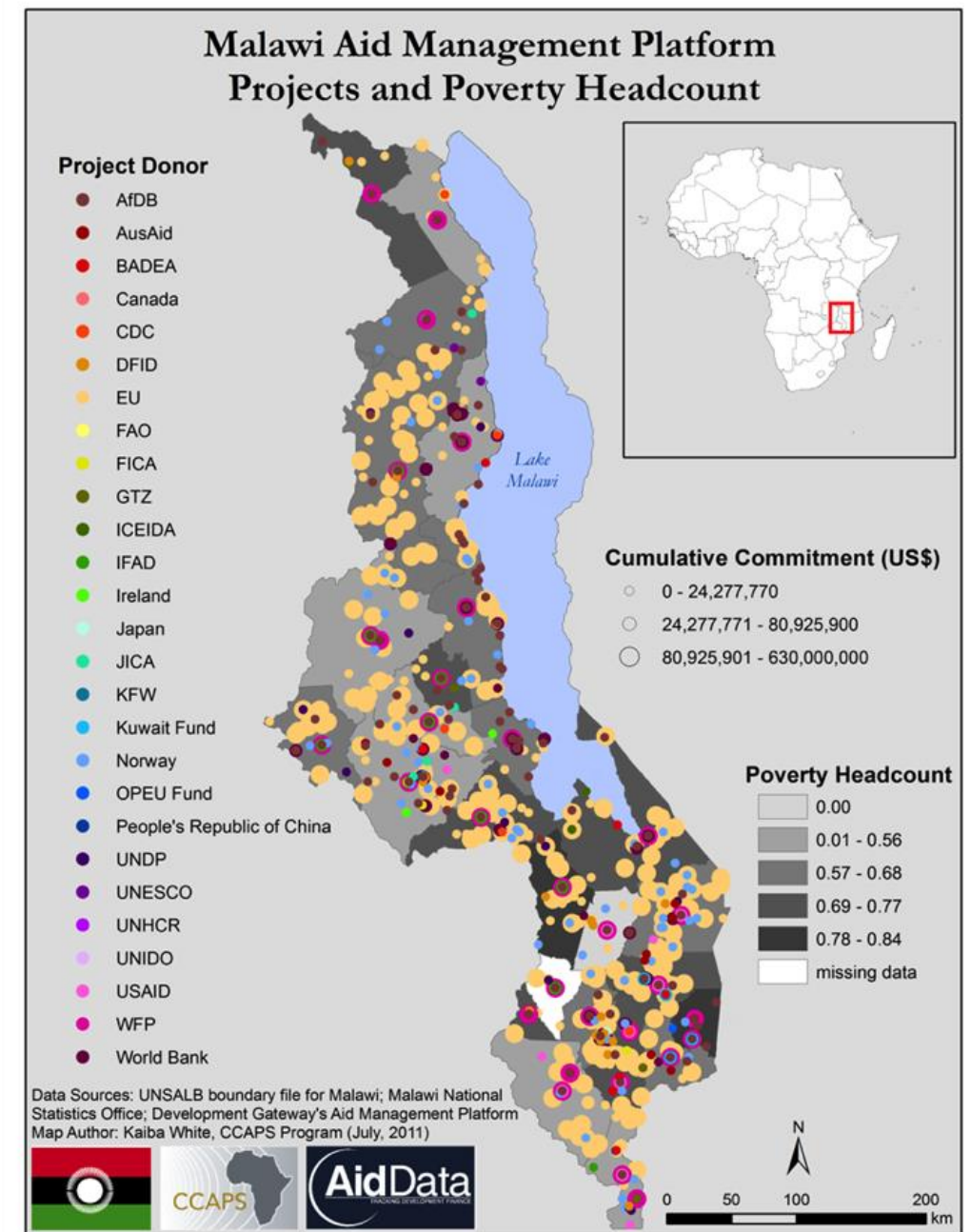
0.011

0.006



# Geocoding all donors in Malawi (Summer 2011)

- Leveraged Development Gateway relationships with 25+ government partners using Aid Management Platform (AMP)
- Partnered with Malawi Ministry of Finance, UT Austin CCAPS
- Geocoded 30+ donors; 700+ projects; \$7.5 billion in commitments
- First “Open Aid Map”
- Showcased at annual AMP workshop; generated further demand





# Taking Geocoding to Scale: USAID HESN



**USAID**  
FROM THE AMERICAN PEOPLE

## AIDDATA CENTER FOR DEVELOPMENT POLICY

1. Geocoding all activities in up to 15 partner countries
2. Creating a research consortium for geospatial analysis of aid
3. Developing cutting-edge tools for data collection, geospatial analysis, data visualization, and knowledge sharing
4. Incentivizing additional research and innovation through challenge grants and seed funding
5. Increasing capacity of local actors to access and use geospatial aid data



MAKERERE UNIVERSITY

**Berkeley**  
UNIVERSITY OF CALIFORNIA

**Duke**  
UNIVERSITY

**MICHIGAN STATE**  
UNIVERSITY

**ATM** | **TEXAS A&M**  
UNIVERSITY



**Massachusetts  
Institute of  
Technology**

**AIDDATA**  
A Research Lab at William & Mary



**WILLIAM & MARY**  
CHARTERED 1693



## AIDDATA AT WILLIAM & MARY

Human Capital: Research and Teaching  
Integration

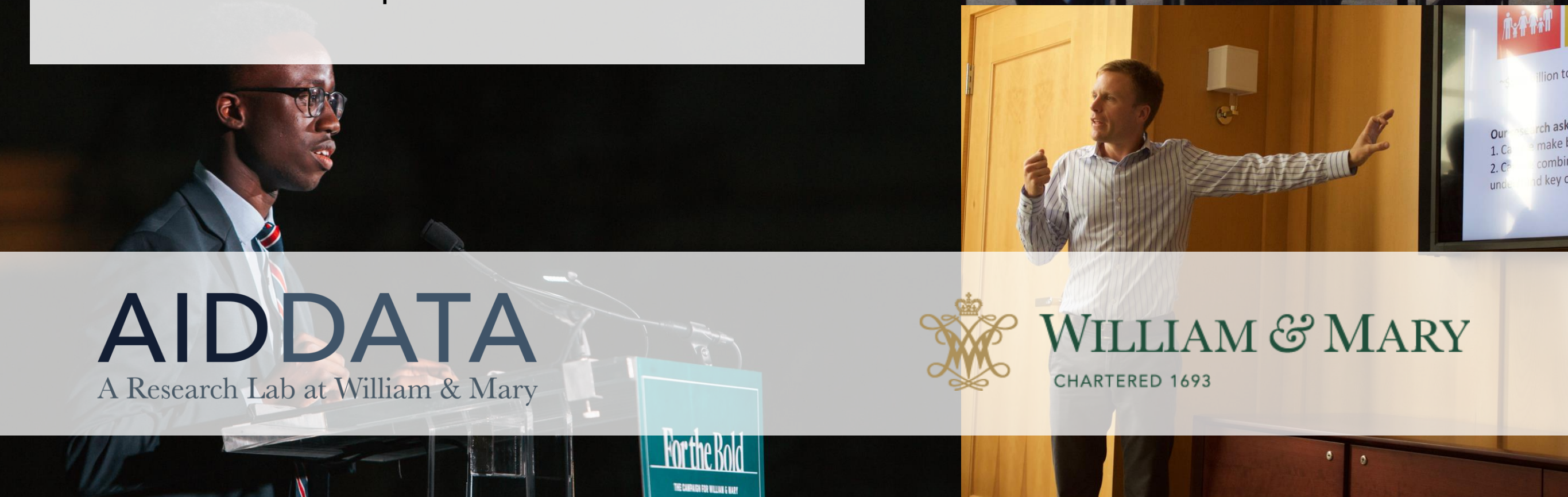
Financial Capital: Overhead Used to Seed New  
Projects

## INCUBATED PROGRAMS

AidData Summer Fellows

ITPIR Shark Tank

International Development Seminar



# AIDDATA

A Research Lab at William & Mary



## WILLIAM & MARY

CHARTERED 1693



# AIDDATA

A Research Lab at William & Mary



WILLIAM & MARY

CHARTERED 1693

## Alena Stern

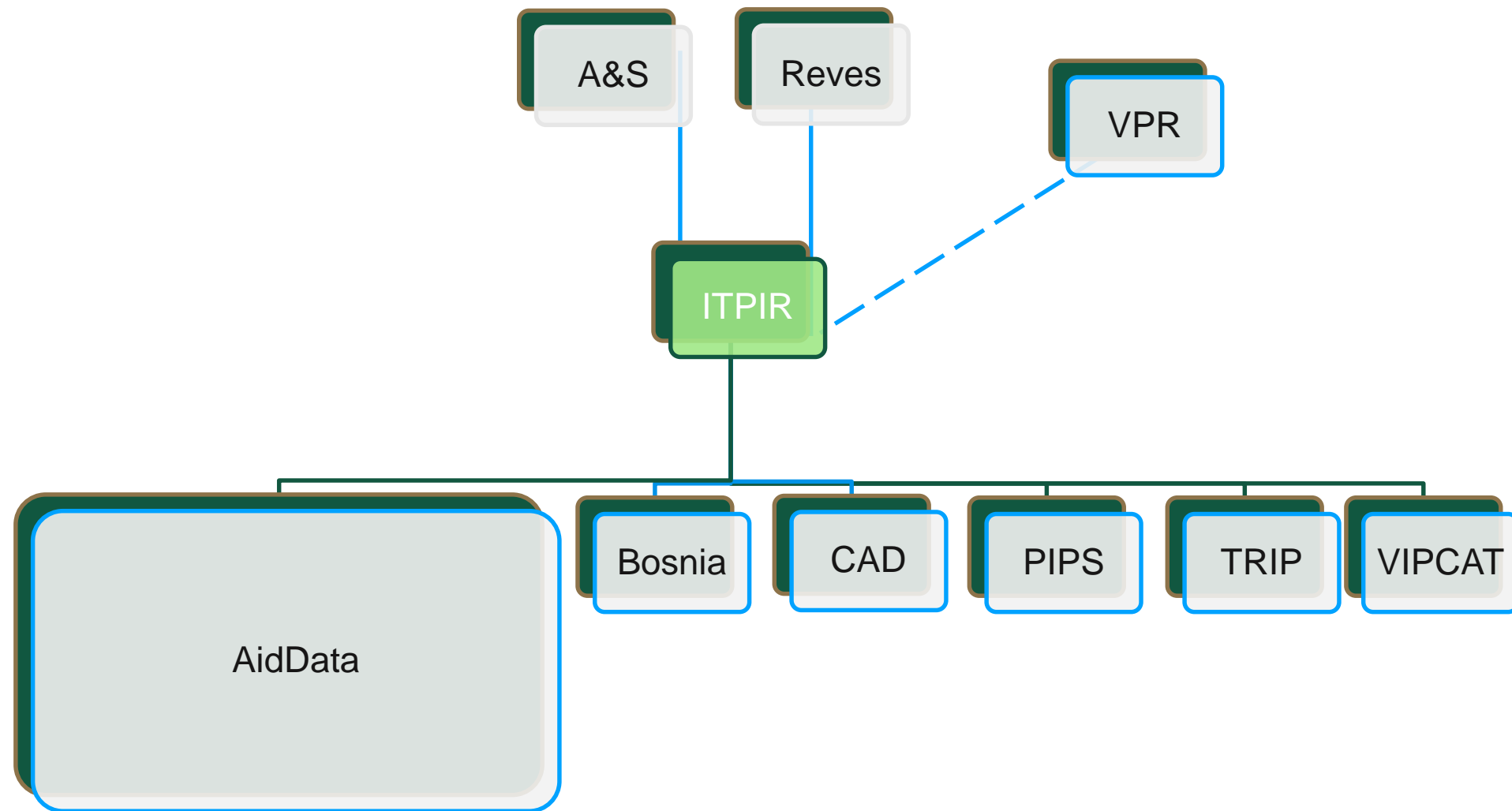
Class of 2012



# USAID

FROM THE AMERICAN PEOPLE

# AidData is housed within ITPIR





## LTL: Listening to Leaders

Understanding the priorities and perspectives of leaders in low- and middle-income countries, and measuring the performance of external development partners with open-ended and close-ended feedback data







## TDF: Transparent Development Footprints

Tracking underreported financial flows from public and private donors, lenders, and investors that publicly disclose little about their overseas activities

# AIDDATA

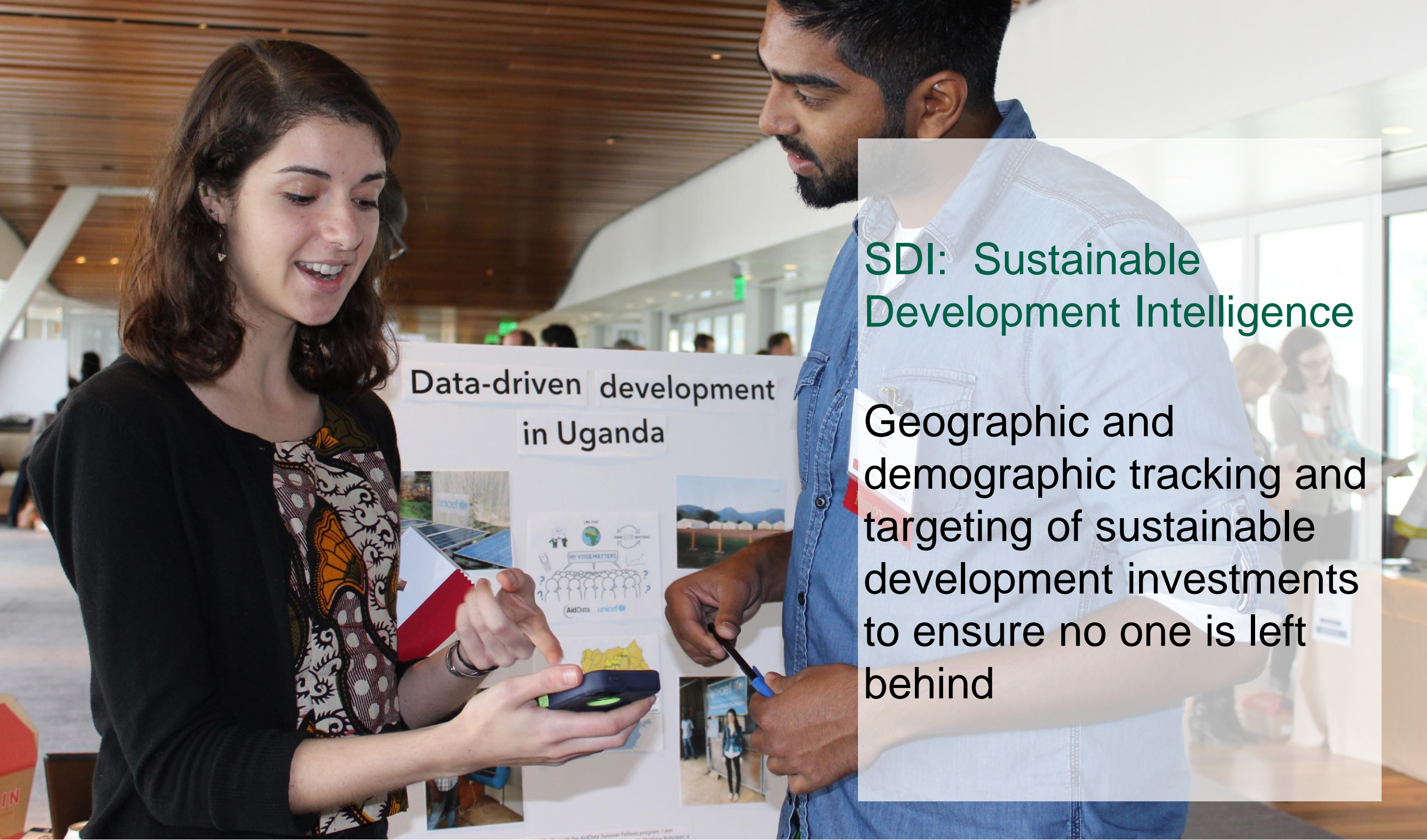
A Research Lab at William & Mary



## WILLIAM & MARY

CHARTERED 1693





SDI: Sustainable Development Intelligence

Geographic and demographic tracking and targeting of sustainable development investments to ensure no one is left behind

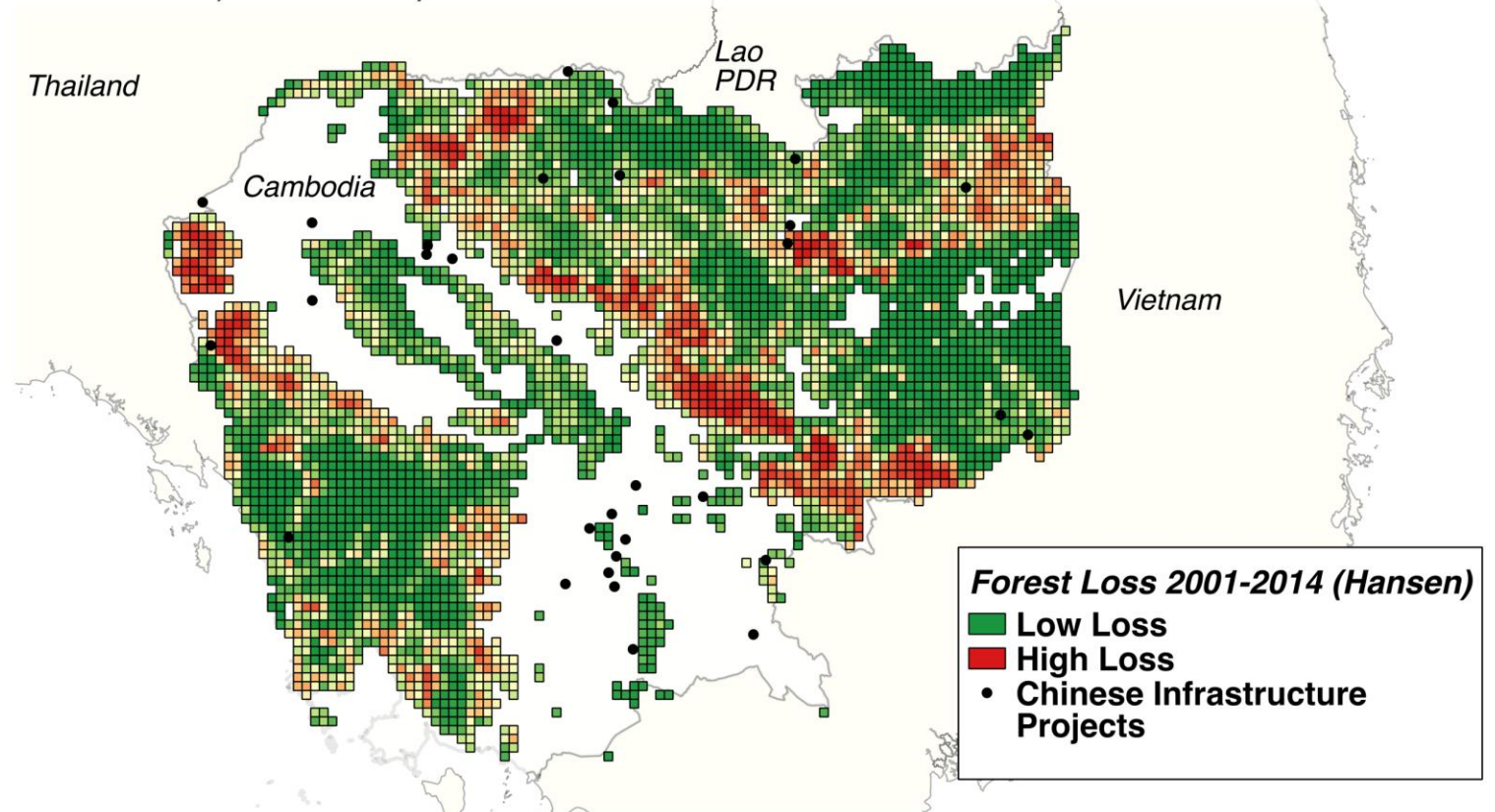


# GIE: Geospatial Impact Evaluations

Rigorously evaluating the impacts and cost effectiveness of specific interventions and large investment portfolios with spatial data

**AIDDATA**  
A Research Lab at William & Mary

**Chinese Development Projects in Ecologically Sensitive Areas:**  
*Identifying, Geo-Referencing, and Evaluating the Impacts of Chinese Development Finance in the Mekong Delta, Great Lakes of Africa, and Tropical Andes*



**WILLIAM & MARY**  
CHARTERED 1693



## GEO: Geospatial Data Framework

Creating high-resolution, high-frequency measures of development outcomes, powerful spatial data integration and extraction infrastructure, and next-generation geospatial analysis tools

**AIDDATA**

A Research Lab at William & Mary



**WILLIAM & MARY**

CHARTERED 1693