



WILLIAM & MARY

CHARTERED 1693

ADMINISTRATION/ BUILDINGS & GROUNDS

September 22, 2016

ADMINISTRATION/BUILDINGS & GROUNDS

Primary Responsibilities:

- Administrative Policy
 - Human Resources
 - IT
 - Procurement
 - Restructuring
- Establishment of architectural standards for building and landscape design
- Oversight of the construction, renovation and maintenance of facilities
- Approval of Master Site Plans
- Approval of Capital Outlay Six-Year Plan
- Oversight of Building Official

JAMES MONROE HIGHLAND 2016 MASTER PLAN





ABOVE: PHOTO BY GENE RUINION



waterstreetstudio
landscape architecture | civil engineering
418 E Main Street 434.295.8177 Charlottesville, VA 22902

JAMES MONROE'S HIGHLAND

SCHEMATIC MASTER PLAN
SEPTEMBER 21-22, 2016





PHOTO BY GENE RUNION



DISTANCES

MONROE'S HIGHLAND to

JEFFERSON VINEYARDS

driving: 1.4 mi
linear distance: 0.8 mi

TUFTON

driving: 2.3 mi
linear distance: 1.7 mi

INTERNATIONAL CENTER FOR JEFFERSON STUDIES

driving: 2.6 mi
linear distance: 1.2 mi

MORVEN

driving: 2.9 mi
linear distance: 1.4 mi

MONTICELLO

driving: 3.0 mi
linear distance: 1.9 mi

MONTALTO

driving: 4.1 mi
linear distance: 1.3 mi

MONTICELLO TRAIL

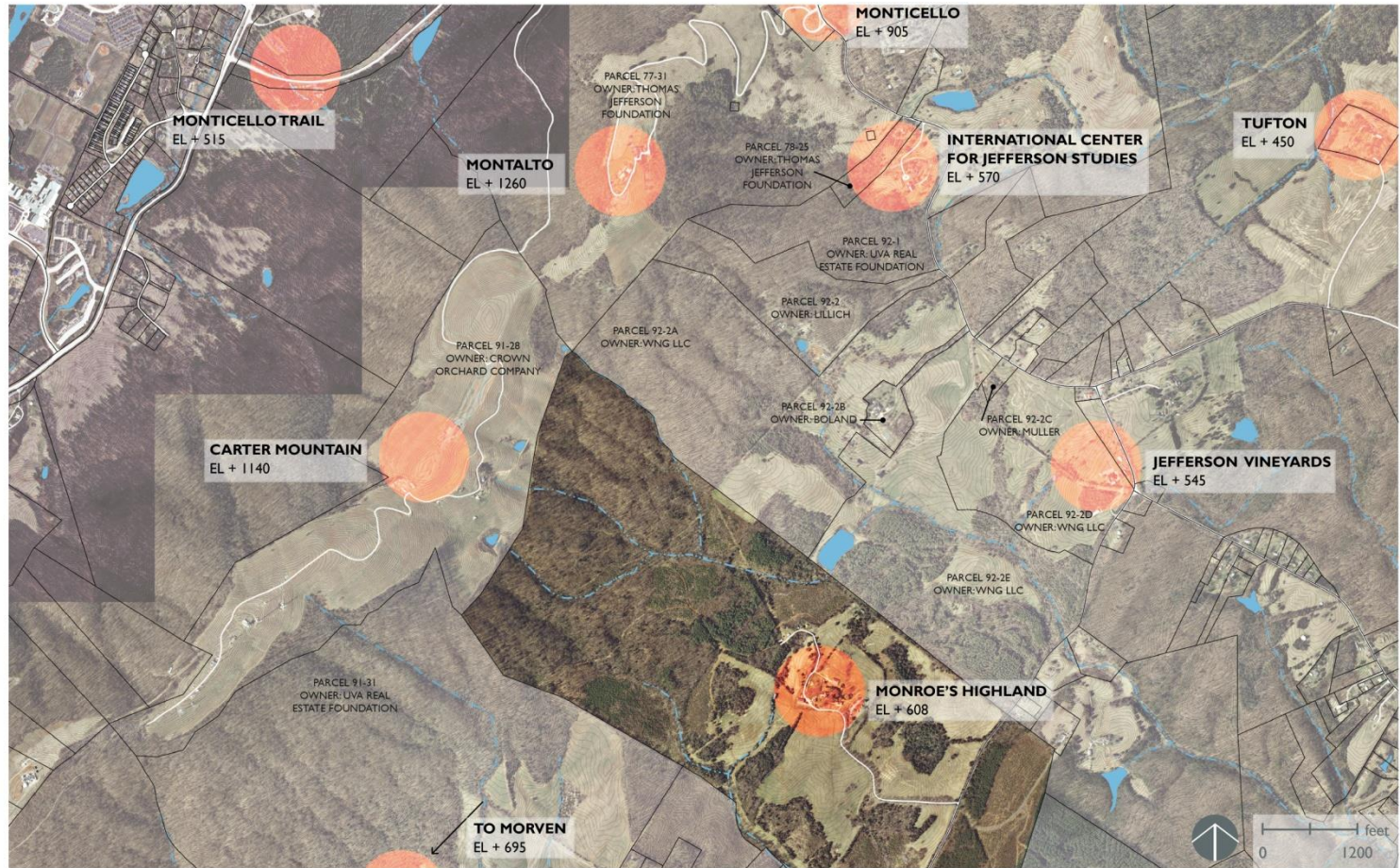
driving: 4.3 mi
linear distance: 1.8 mi

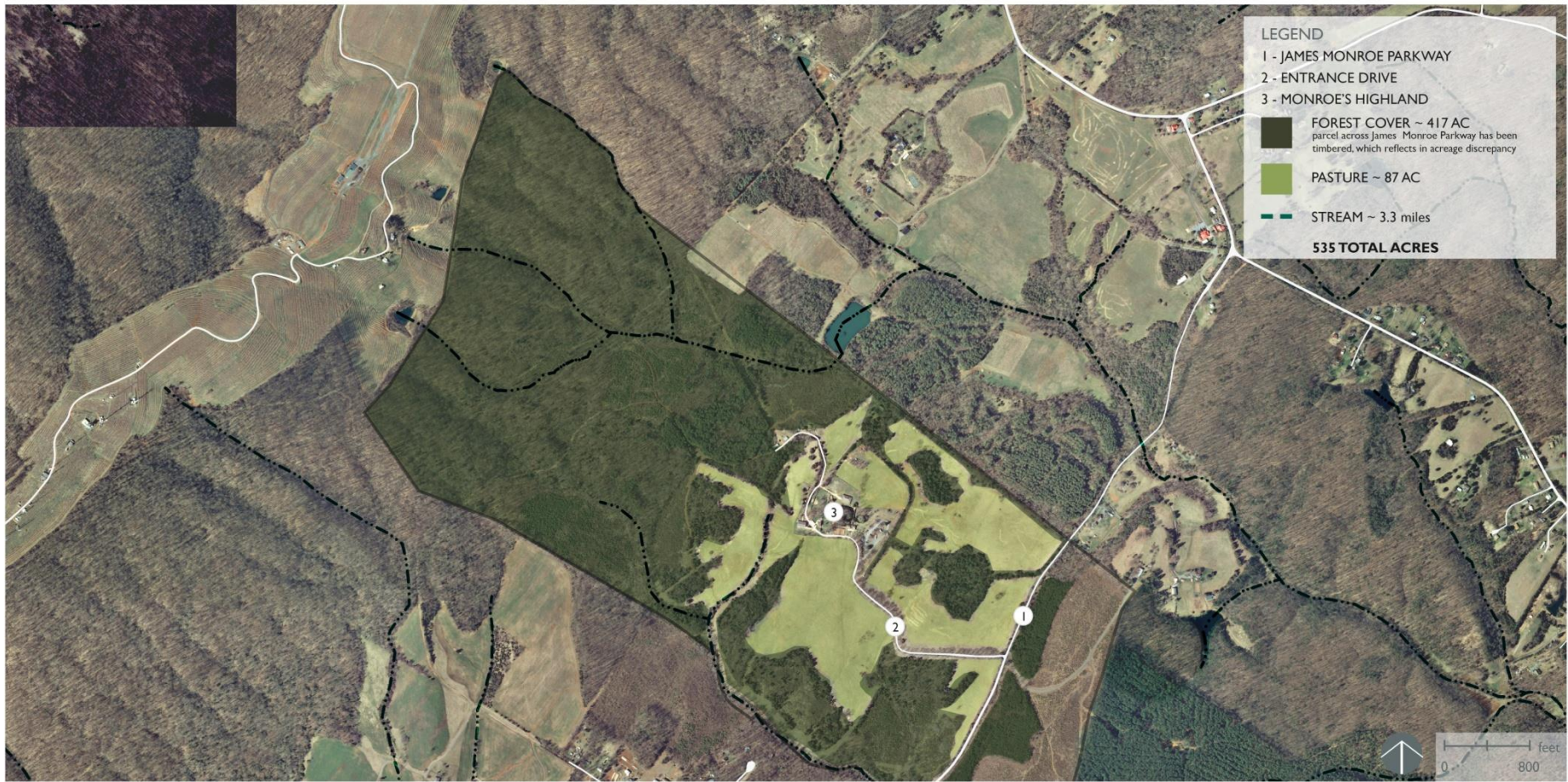
CARTER MOUNTAIN

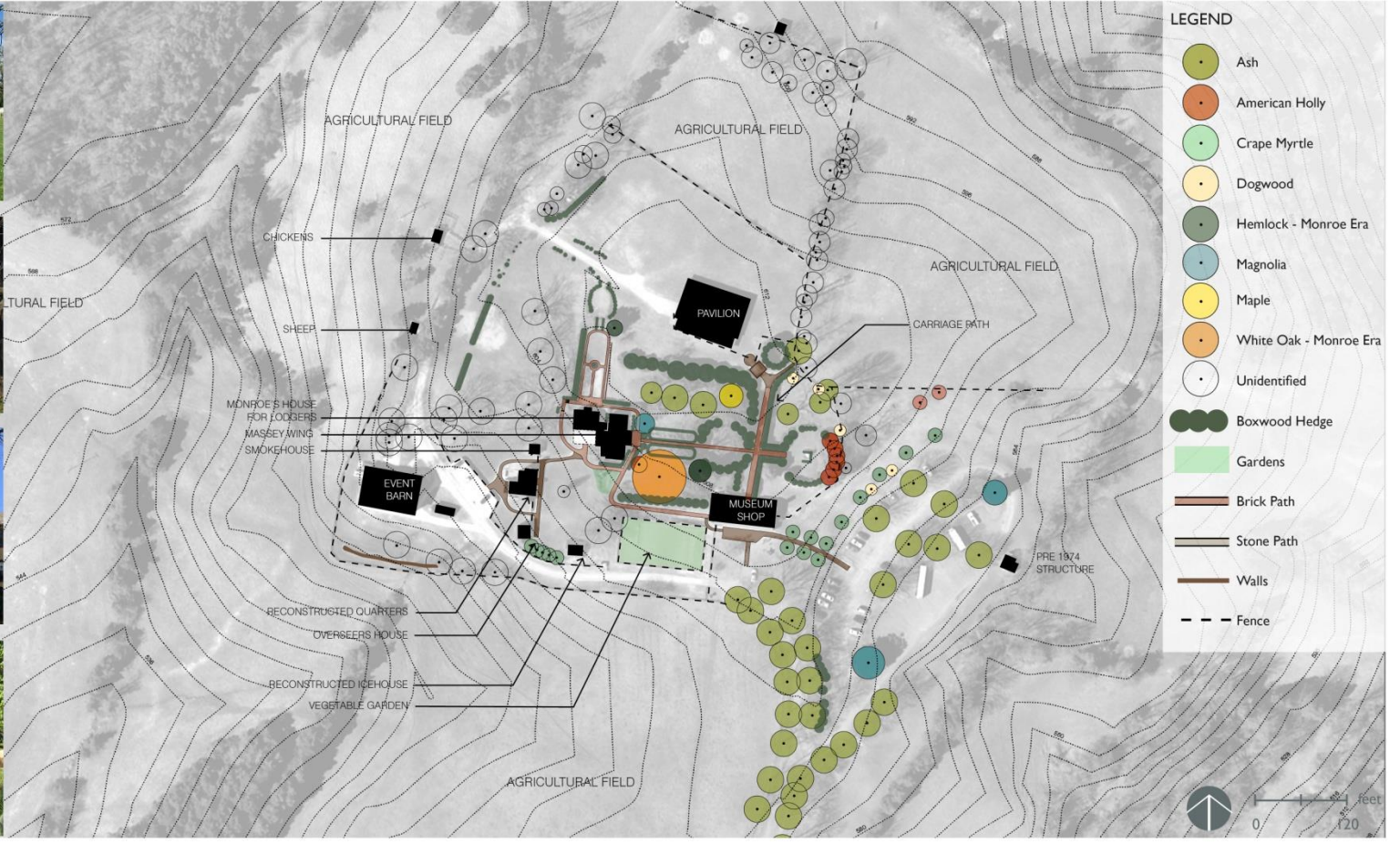
driving: 5.2 mi
linear distance: 1.0 mi

TRUMP WINERY

driving: 4.7 mi
linear distance: 3.27 mi



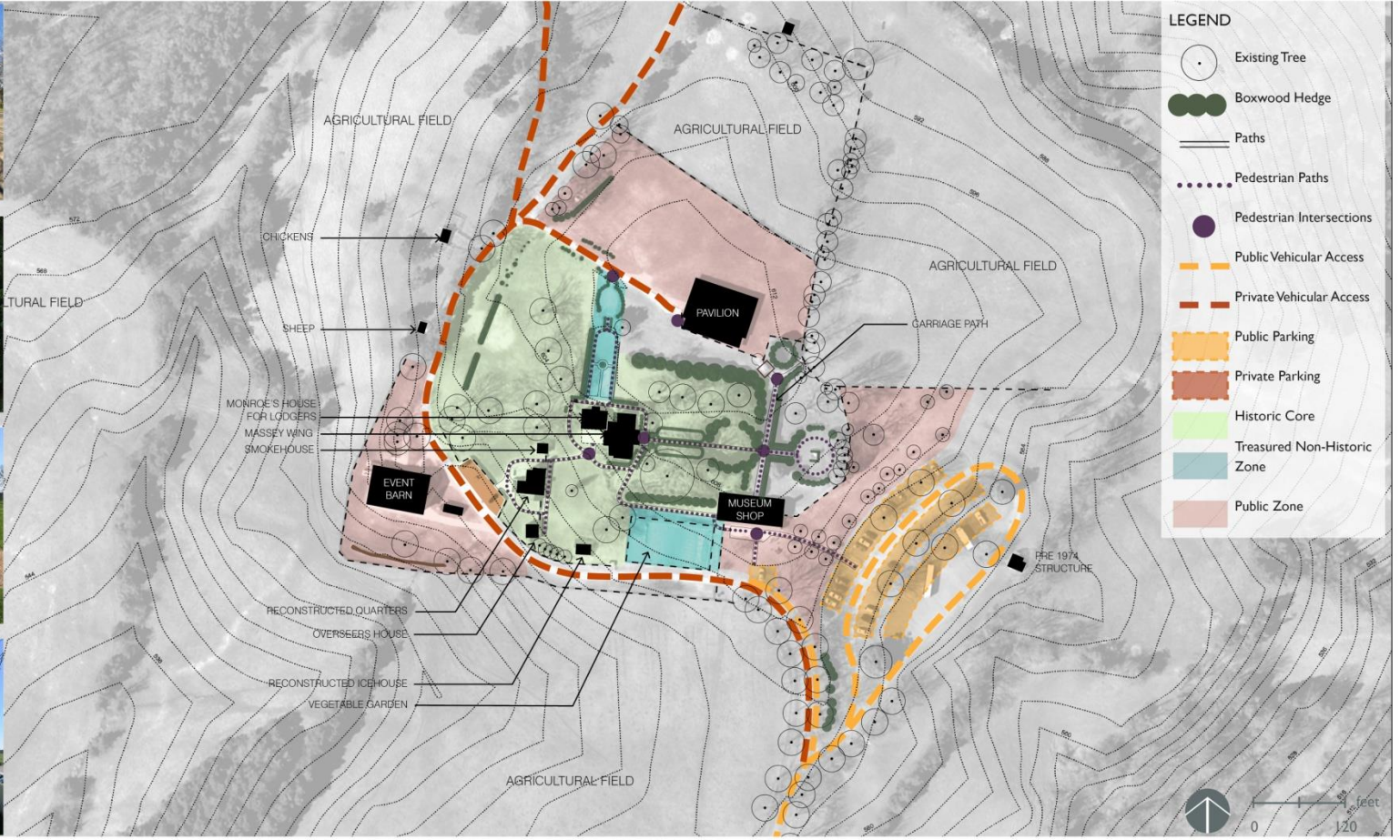




waterstreet studio
LANDSCAPE ARCHITECTS
CIVIL ENGINEERS

PHYSICAL FEATURES INVENTORY
existing conditions

JAMES MONROE'S HIGHLAND
SCHEMATIC MASTER PLAN
SEPTEMBER 21-22, 2016



waterstreet studio
LANDSCAPE ARCHITECTS
CIVIL ENGINEERS

SPATIAL ANALYSIS AND CIRCULATION
existing conditions

JAMES MONROE'S HIGHLAND
SCHEMATIC MASTER PLAN
SEPTEMBER 21-22, 2016

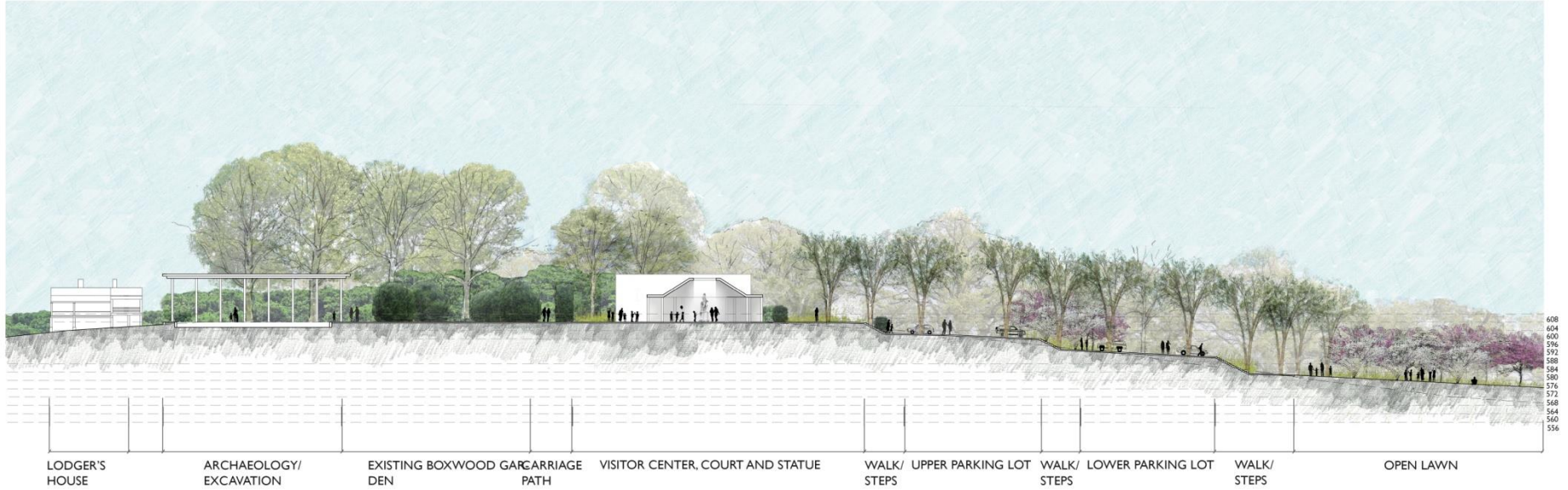
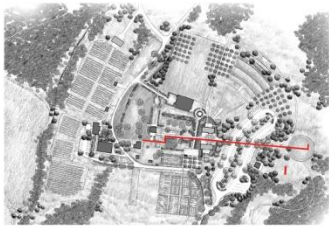




LEGEND

- 1 - UPPER PARKING LOT - 81 SPACES
- 2 - LOWER PARKING LOT - 61 SPACES
- 3 - RESTROOMS (REHABILITATE EXISTING STRUCTURE)
- 4 - EXISTING BOXWOOD GARDEN
- 5 - VISITOR CENTER WITH CENTRAL PAVILION AND OUTDOOR TERRACES
- 6 - ARCHAEOLOGY EXCAVATION/PAVILION
- 7 - PAVED TERRACES/HERB GARDEN
- 8 - TREE ALLEE W/ HEDGES/BENCHES
- 9 - ACCESSIBLE PARKING
- 10- DEMONSTRATION CROPS/GARDEN
- 11- FUTURE QUARTERS ARCHAEOLOGY
- 12- CONSERVATION AGRICULTURE
- 13- SERVICE COURT/EVENT TERRACE W/HEDGES
- 14- ENTRY COURT
- 15- EXPANDED EVENT LAWN - 330' x 250'
- 16- ORCHARD
- 17- SMALL EVENT LAWN
- 18- MOWN PATH
- 19- MEADOW
- 20- LAWN TERRACES - 220' x 120'
- 21- AMPHITHEATER
- 22-SHEEP Paddock W/ PASTURE
- 23-BARN AND SERVICE COURT
- 24-ORCHARD WITH PICNIC AREA AND SEAT WALLS
- 25-RELOCATED MASSEY HOUSE WITH COURTYARD TERRACES
- 26-PEACOCK YARD
- 27-JOHNS GARDEN
- 28-MONROE'S HOUSE FOR LODGERS
- 29-MUSEUM SHOP - TO BE REMOVED







LEGEND

- 1 - UPPER PARKING LOT - 81 SPACES
- 2 - LOWER PARKING LOT - 61 SPACES
- 3 - RESTROOMS (REHABILITATE EXISTING STRUCTURE)
- 4 - EXISTING BOXWOOD GARDEN
- 5 - VISITOR CENTER WITH CENTRAL PAVILION AND OUTDOOR TERRACES
- 6 - ARCHAEOLOGY EXCAVATION/PAVILION
- 7 - PAVED TERRACES/HERB GARDEN
- 8 - TREE ALLEE W/ HEDGES/BENCHES
- 9 - ACCESSIBLE PARKING
- 10- DEMONSTRATION CROPS/GARDEN
- 11- FUTURE QUARTERS ARCHAEOLOGY
- 12- CONSERVATION AGRICULTURE
- 13- SERVICE COURT/EVENT TERRACE W/HEDGES
- 14- ENTRY COURT
- 15- EXPANDED EVENT LAWN - 330' x 250'
- 16- ORCHARD
- 17- SMALL EVENT LAWN
- 18- MOWN PATH
- 19- MEADOW
- 20- LAWN TERRACES - 220' x 120'
- 21- AMPHITHEATER
- 22-SHEEP PADDOCK W/ PASTURE
- 23-BARN AND SERVICE COURT
- 24-ORCHARD WITH PICNIC AREA AND SEAT WALLS
- 25-RELOCATED MASSEY HOUSE WITH COURTYARD TERRACES
- 26-PEACOCK YARD
- 27-JOHNS GARDEN
- 28-MONROE'S HOUSE FOR LODGERS
- 29-MUSEUM SHOP - TO BE REMOVED



COMPLETED PROJECTS

- ISC III
- Tyler Hall
- Zable Stadium

ISC III













TYLER HALL









ZABLE STADIUM





PROJECTS UNDER CONSTRUCTION

- Hixon Center for Experiential Learning and Leadership
- Millington Hall Demolition
- ISC II Brick Facade

PROJECTS IN DESIGN

- McLeod Tyler Wellness Center
- Fine Arts Phase I & II
- West Utilities Plant
- Landrum Hall Renovation

MCLEOD TYLER WELLNESS CENTER



WEST UTILITIES PLANT



PROJECTS IN PREPLANNING

- Muscarelle Museum
Renovation/Expansion

RESOLUTIONS #10-13

- 9(D) Pooled Bond Program Reimbursement: Renovate/Expand Zable Stadium
- 9(D) Pooled Bond Program Reimbursement: Replace Busch Field Turf
- 9(D) Pooled Bond Program Sale: Renovate/Expand Zable Stadium and Replace Busch Field Turf
- Approve 2016 Master Plan of James Monroe's Highland