



WILLIAM & MARY

CHARTERED 1693

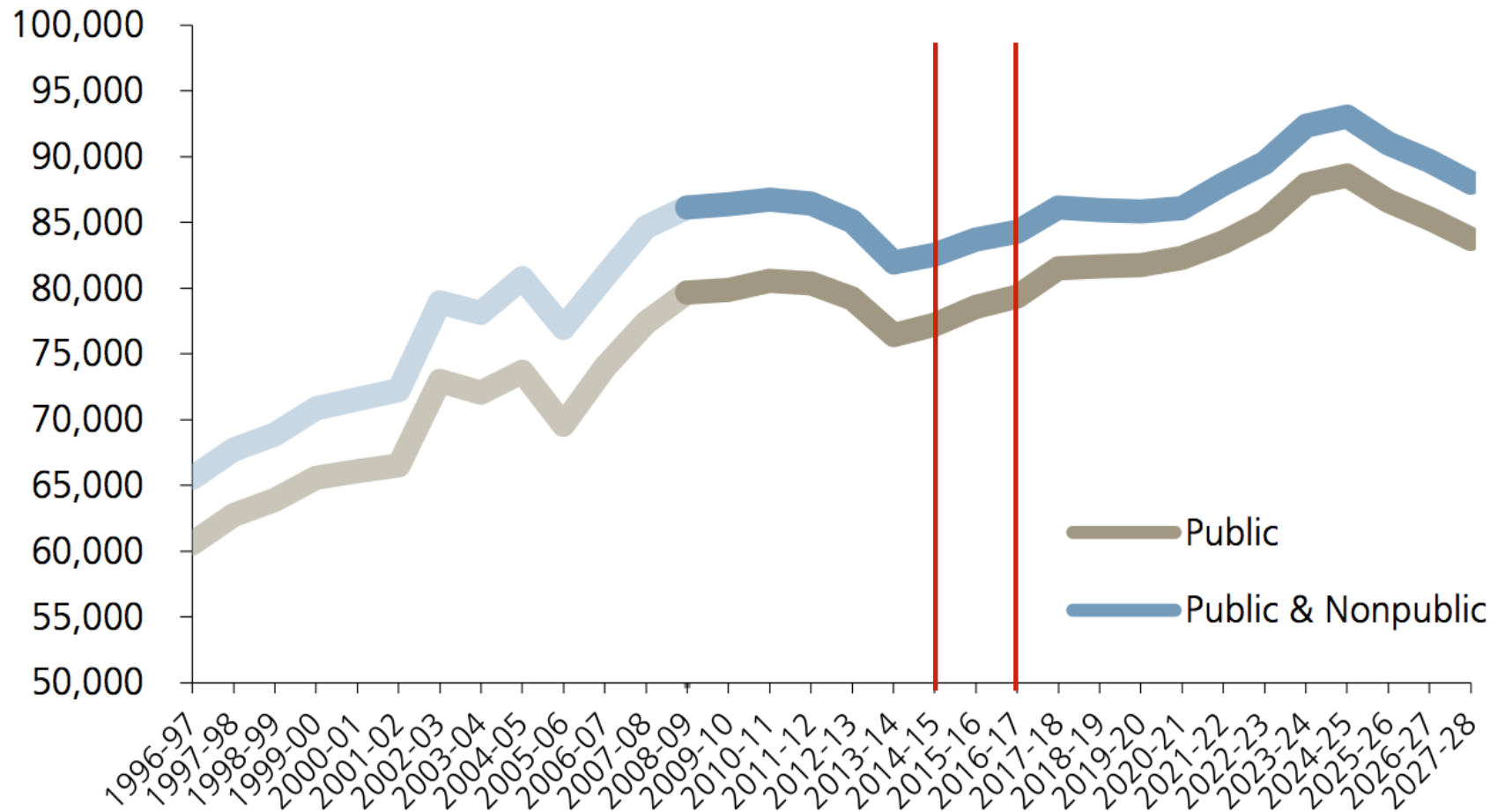
Undergraduate Admission Update

Tim Wolfe

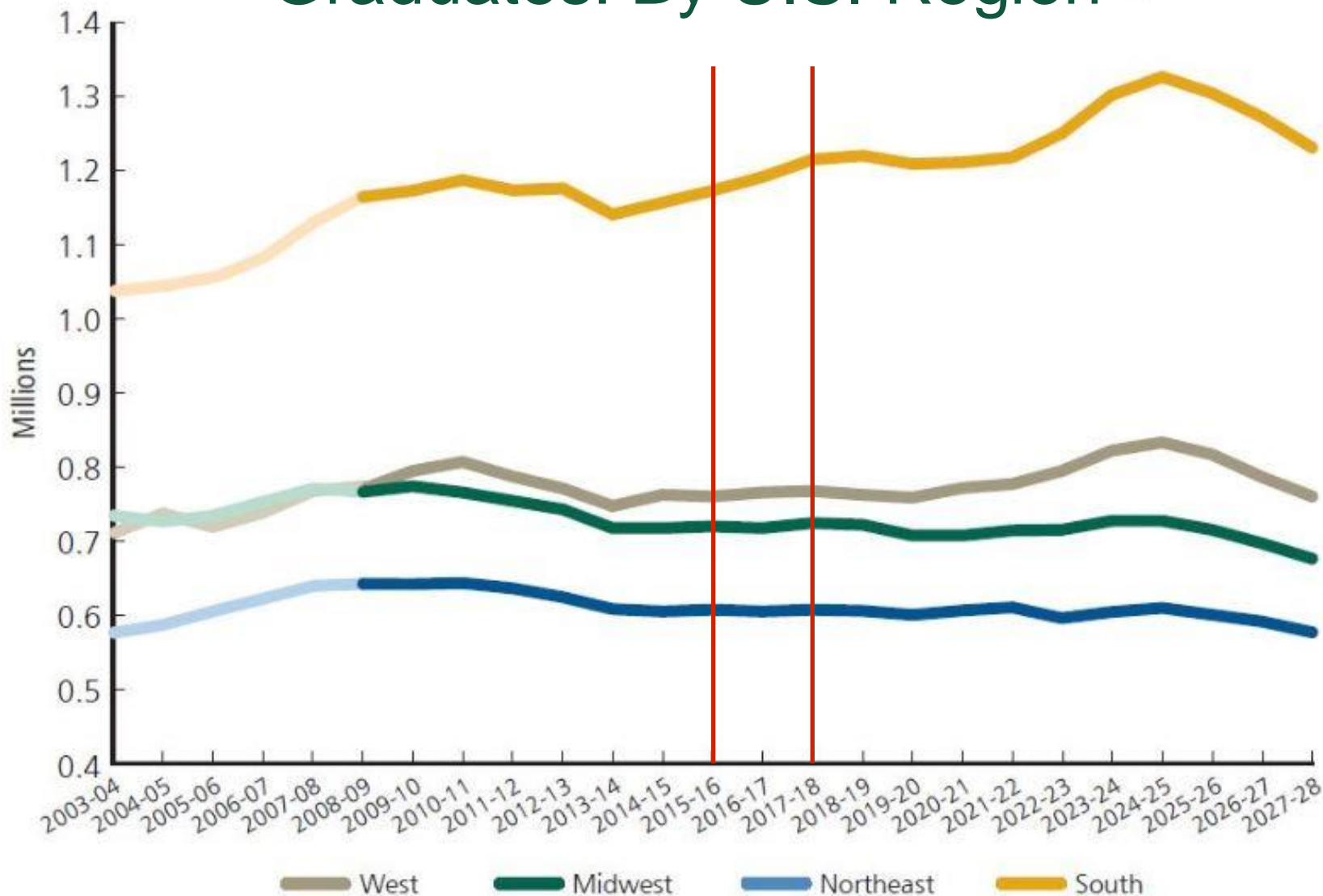
September 22, 2016



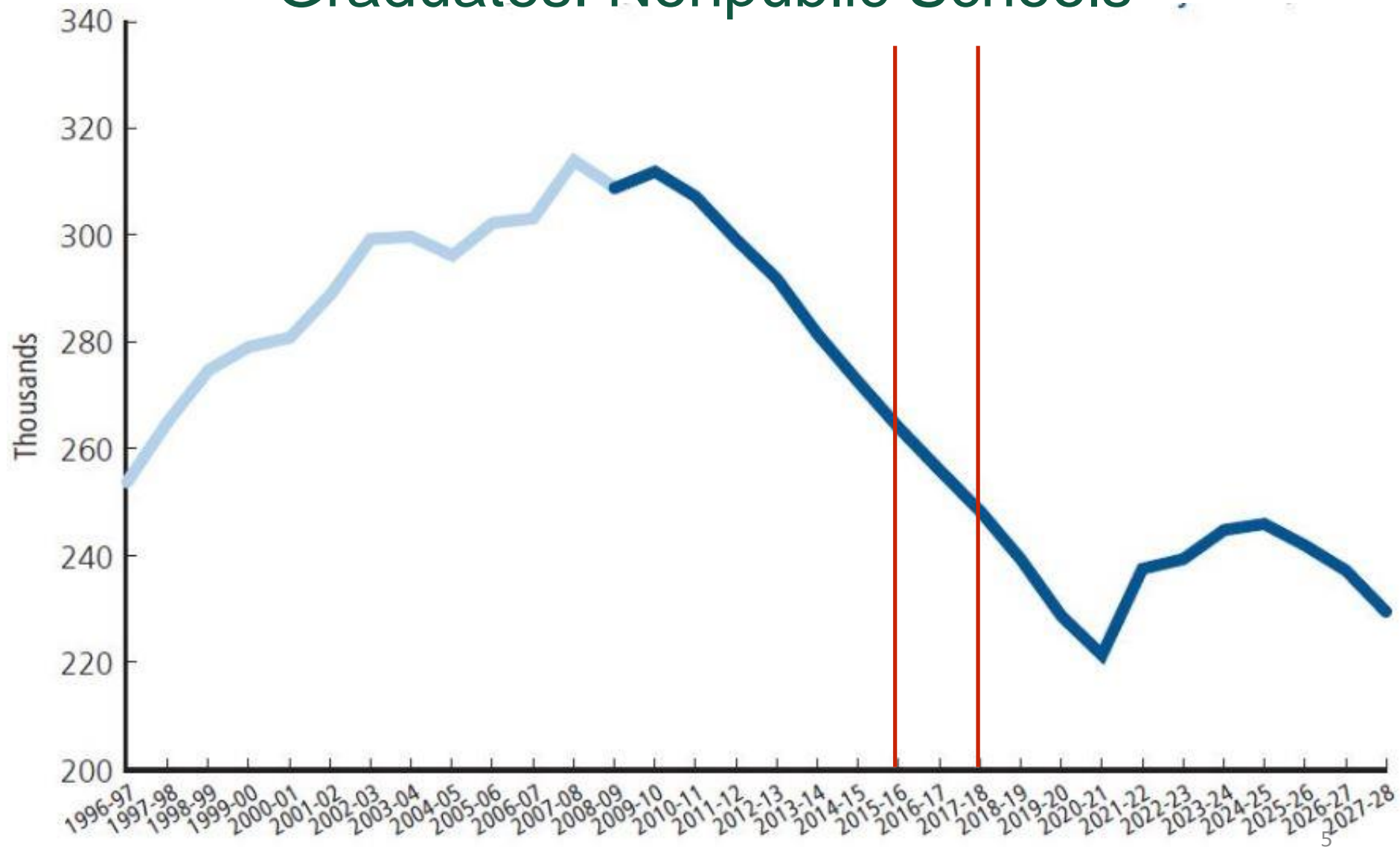
WICHE Projections of High School Graduates: Virginia



WICHE Projections of High School Graduates: By U.S. Region

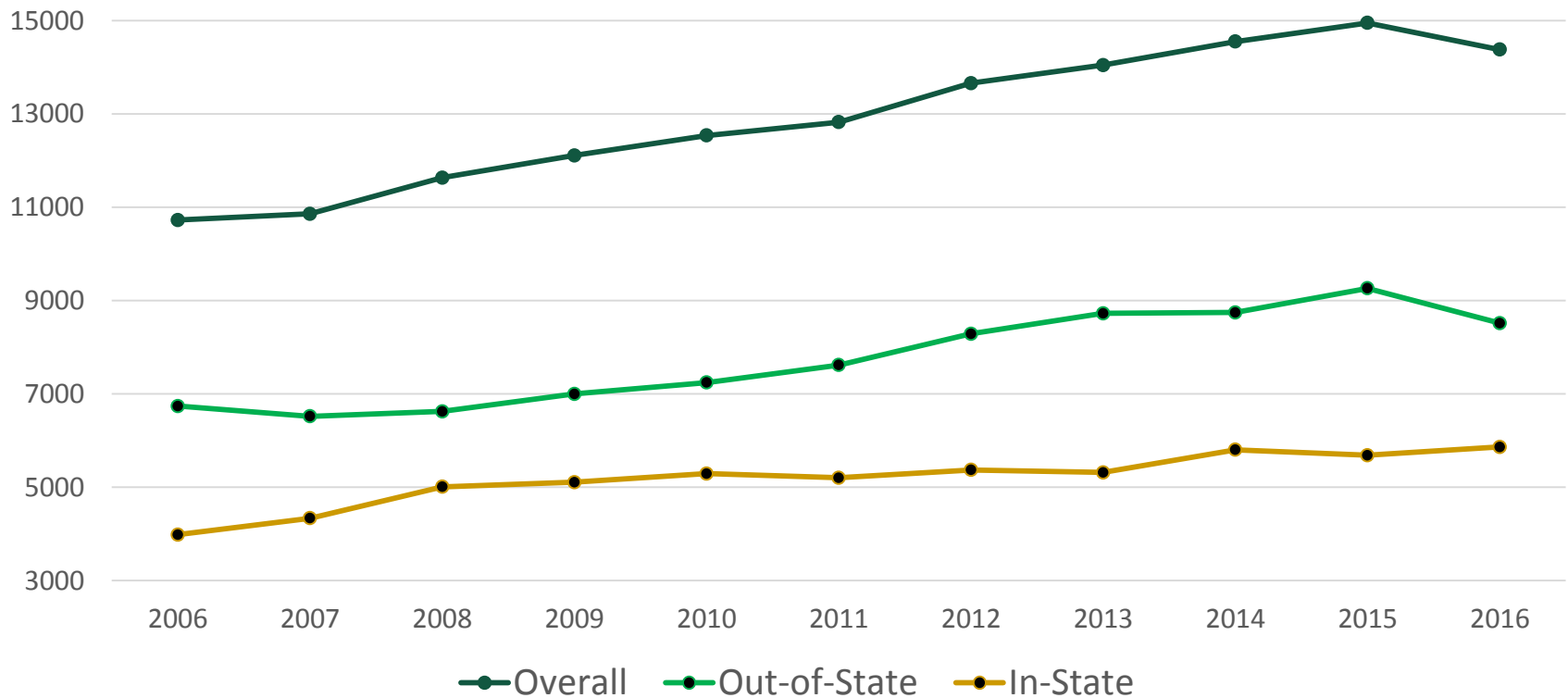


WICHE Projections of High School Graduates: Nonpublic Schools



Freshman Applicant Pool

2006-2016 By Domicile



Admission Snapshot: Past Four Years

Fall 2013	Fall 2014	Fall 2015	Fall 2016
Applications: 14,047	Applications: 14,552	Applications: 14,953	Applications: 14,382
Class Size: 1480	Class Size: 1514	Class Size: 1518	Class Size: 1508
Admit Rate: 33%	Admit Rate: 33%	Admit Rate: 35%	Admit Rate: 37%

Admission Snapshot: Past Four Years

Fall 2013	Fall 2014	Fall 2015	Fall 2016
SAT Q1-Q3: 1270-1460	SAT Q1-Q3: 1270-1470	SAT Q1-Q3: 1260-1460	SAT Q1-Q3: 1250-1470
ACT Q1-Q3: 28-32	ACT Q1-Q3: 29-33	ACT Q1-Q3: 28-32	ACT Q1-Q3: 28-33
Top Decile: 80%	Top Decile: 81%	Top Decile: 81%	Top Decile: 78%
Average GPA: 4.12	Average GPA: 4.16	Average GPA: 4.19	Average GPA: 4.20

Admission Snapshot: Past Four Years

Fall 2013	Fall 2014	Fall 2015	Fall 2016
In-State: 64%	In-State: 63%	In-State: 64%	In-State: 63%
Students of Color: 30%	Students of Color: 30%	Students of Color: 28%	Students of Color: 30%
International: 5%	International: 8%	International: 7%	International: 6%
First Generation: 9%	First Generation: 8%	First Generation: 9%	First Generation: 11%

Ampersandbox



WILLIAM & MARY

CHARTERED 1693

