

*BUILDING  
FOR  
OUR FUTURE*

- Since 2001, the College has constructed some 1million square feet, renovated some 513,000 square feet, and acquired some 335,000 square feet of space.
- At a cost of approximately \$606.8 million
- Supported by State Funds, Student & Employee Fees, Private Donations & Grant Indirect Cost Recovery Funds

# *FUND SOURCES*

■ State Cash	\$ 53.8 mil
■ State Debt	\$154.5 mil
■ College Cash	\$ 8.3 mil
■ College Debt	\$ 321.3 mil
■ Private Giving	\$ 68.9 mil
■ Total	\$606.8 mil

*2001*



# *WREN BUILDING*



*LAW SCHOOL*  
*NORTH WING*





*KECK  
ENVIRONMENTAL  
FIELD LAB*







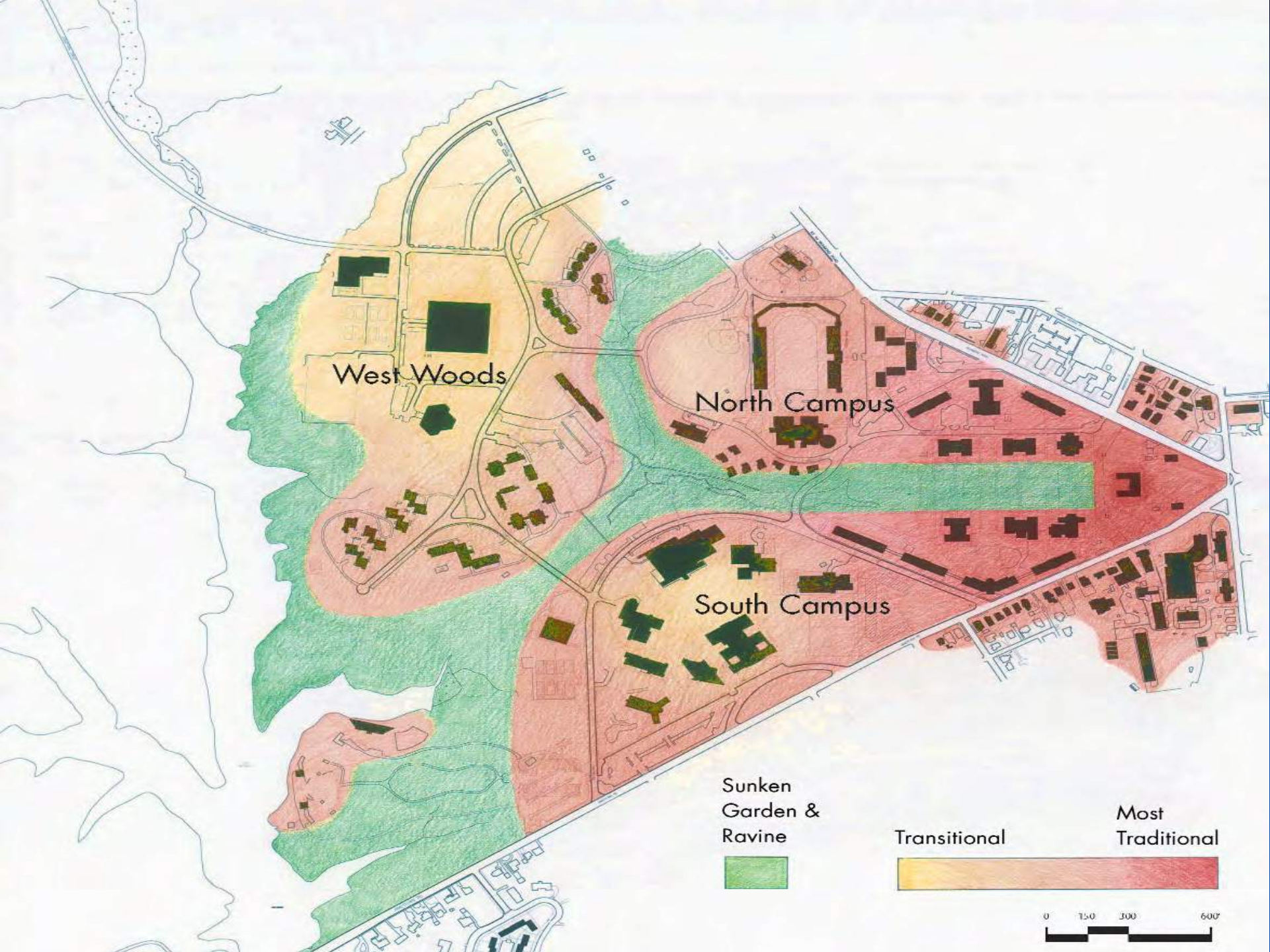
*2003*

*College*

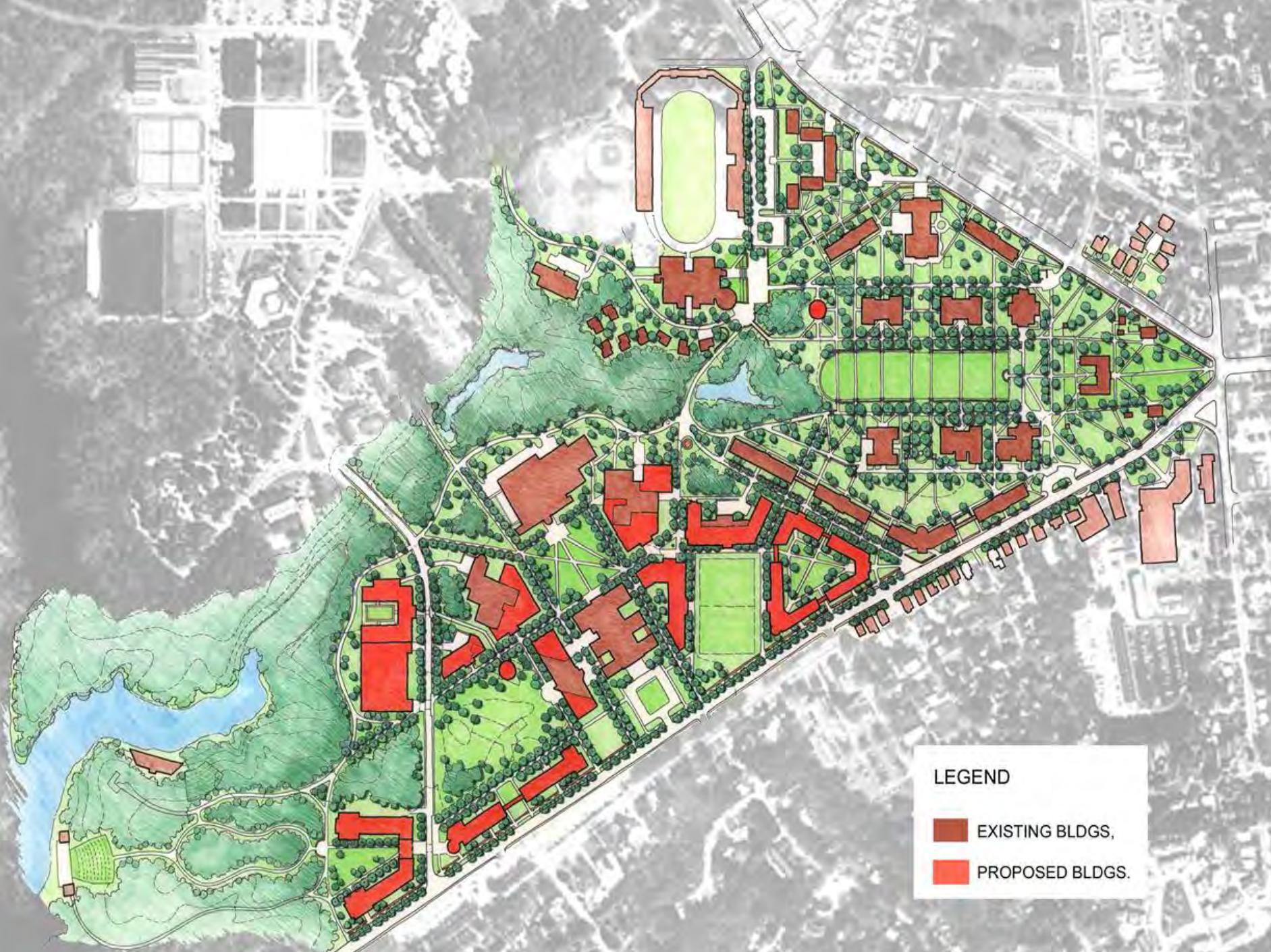
*Architectural &*

*Landscape*

*Design Guidelines*







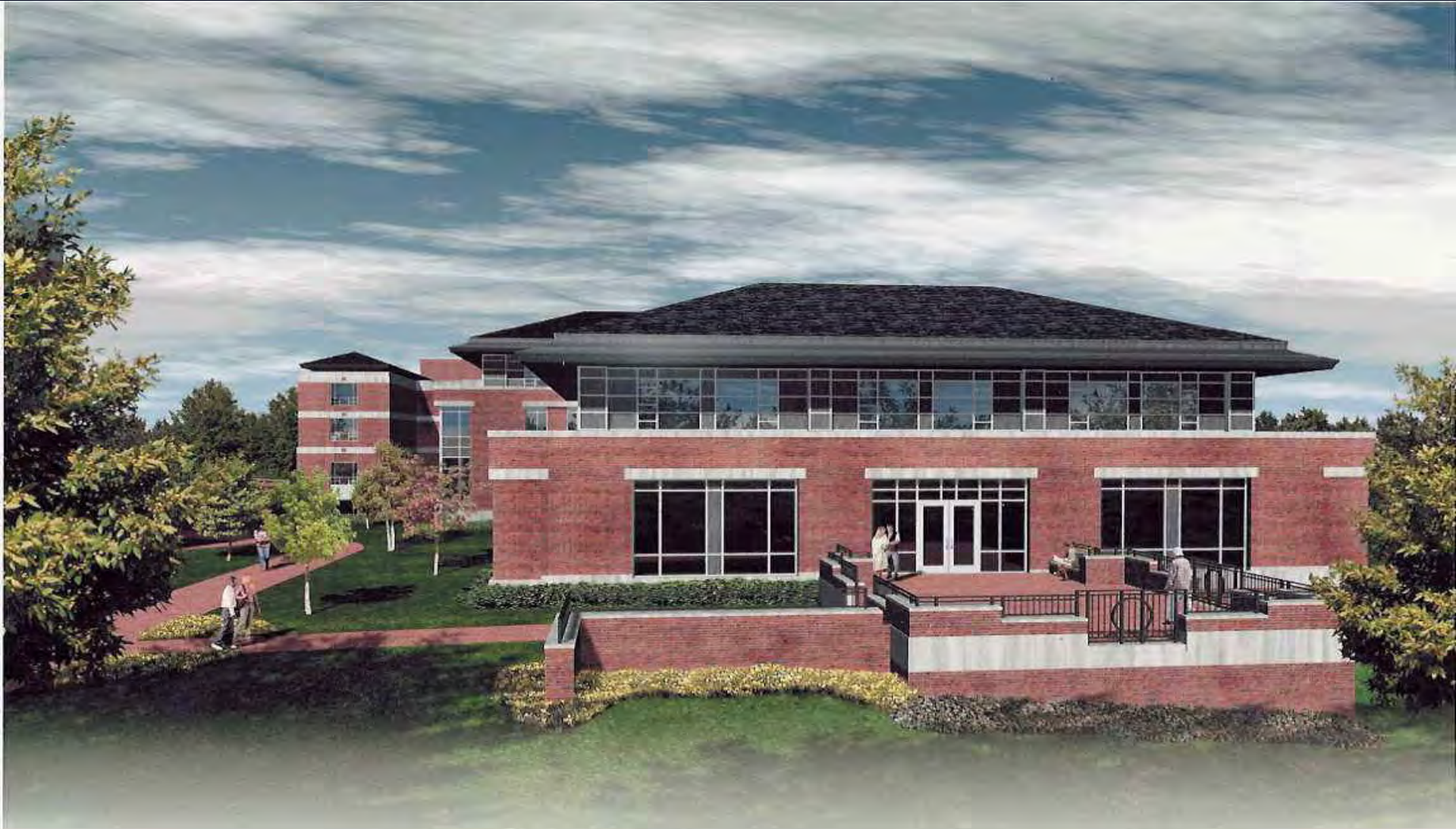
LEGEND

- EXISTING BLDGS.
- PROPOSED BLDGS.

*2004*

# *Swem Library Expansion*





EARL GREGG SWEM LIBRARY  
THE COLLEGE OF WILLIAM & MARY  
RENOVATION AND EXPANSION 2003



2005

*Commons Dining  
Hall  
Renovation  
“The Caf”*





COMMONS  
DINING  
HALL









*Small Hall  
Magnet Facility*





2006

# *Jamestown Dorms*

















# *President's House Renovation*





SEP 22 2006

# *Parking Deck*





*2007*

*Rec Sports*

*Expansion &  
Renovation*

















*Marshall Wythe School  
of Law Library  
Expansion*















# *Admissions Office*



UNDERGRADUATE  
ADMISSION











*Lake Matoaka  
Amphitheatre  
Renovation*













*Jimmye Laycocke  
Football Practice  
Facility*









JIMMYE LAYCOCK  
FOOTBALL CENTER











*2009*

# *Mason School of Business*











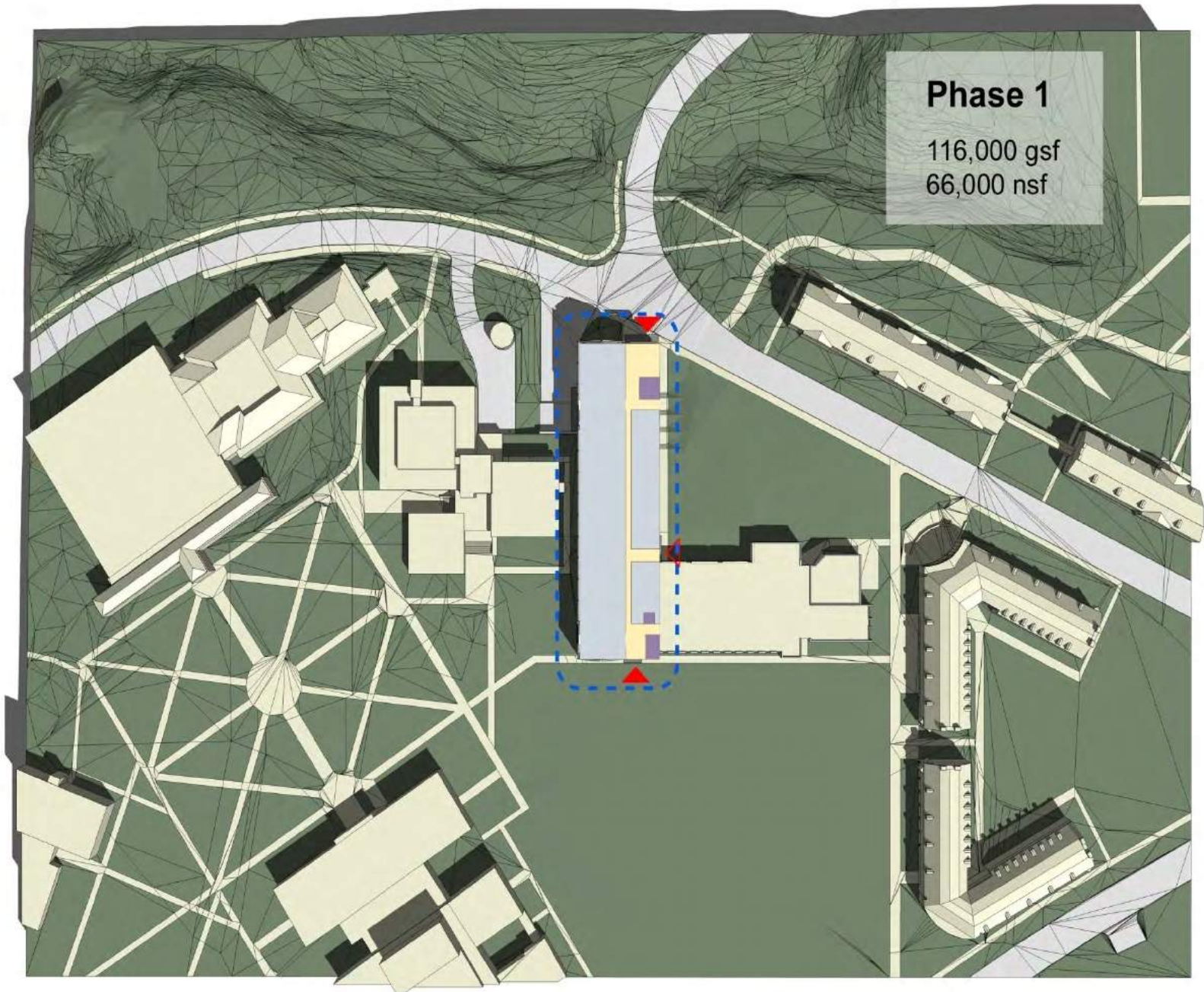


# *Integrated Science Center (1 & 2)*



## Phase 1

116,000 gsf  
66,000 nsf









*2010*



# *School of Education*











Emergency







*The Sherman and  
Gloria H. Cohen Career  
Center*











# *Memorial Garden*











