

Virginia Institute of Marine Science

Committee on Financial Affairs

Board of Visitors

College of William & Mary

April 27, 2012

2012 General Assembly

Operating Actions

<u>Item</u>	<u>FY 2013</u>	<u>FY 2014</u>
New Faculty Positions	\$525,000 GF 4.0 FTE	\$525,000 GF 4.0 FTE
Scoping Study: Sea Level Rise in Tidewater, VA	\$50,000 GF 0.0 FTE	\$0 GF 0.0 FTE
Graduate Financial Aid	\$0 GF	\$3,013 GF
Reallocation	\$0 GF	\$0 GF

New Faculty Positions

(4 FTE from 2011 General Assembly)

Marine Geology (2 positions)

- 54 Applicants
- 6 On-Campus Interviews
- Home Institutions: UVA, Univ. of Pennsylvania, Yale, University of Plymouth (UK), BU
- Example Expertise in Sea Level Rise and Shoreline Processes

Physical Oceanography (1 position)

- 33 Applicants
- 5 On-Campus Interviews
- Home Institutions: Univ. of Washington, Dauphin Island Sea Lab, Woods Hole, Stanford
- Example Expertise in Estuarine to Open Shelf Oceanography

Microbiology/Microbial Ecology (1 position)

- 79 Applicants
- 4 On-Campus Interviews
- Home Institutions: Univ. of Delaware, UNC-Wilmington, Univ. of Washington, Cornell
- Example Expertise in Disease Ecology and Molecular Microbiology

2012 General Assembly

Capital Outlay Actions

Research Vessel
(purchase or build)

\$8,050,000
State Funded

Consolidated Scientific Research
Facility (detailed planning)

\$463,352
50% VIMS Funded with State
Reimbursement

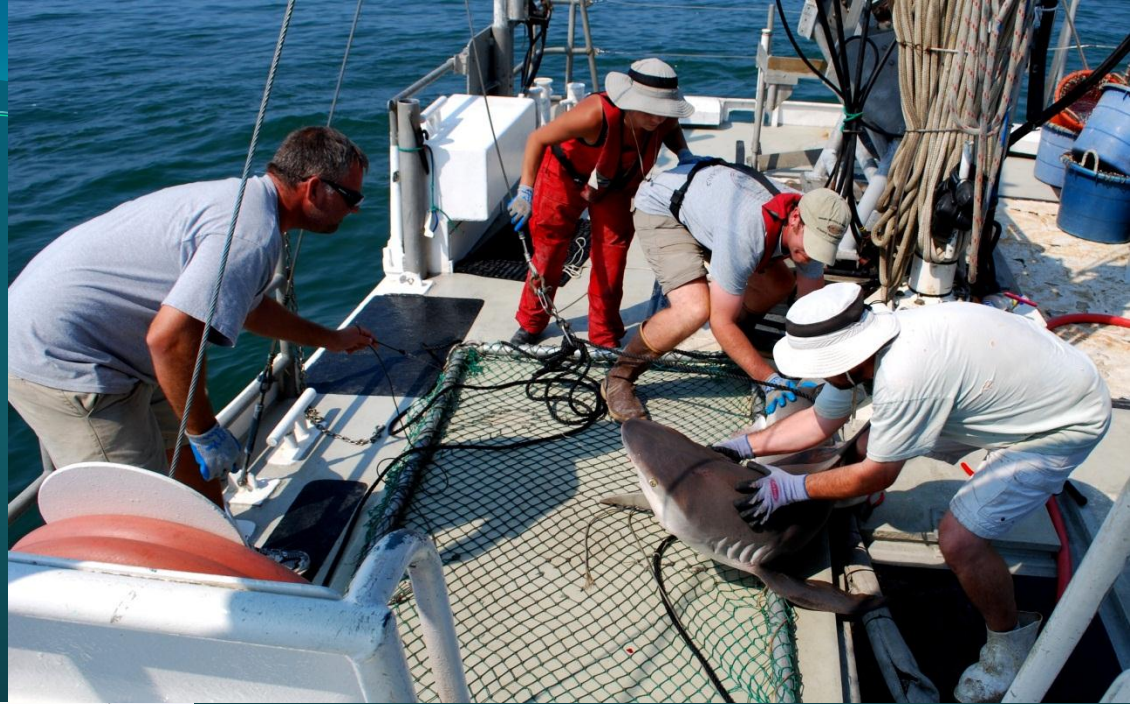
Maintenance Reserve

\$193,060
State Funded

Replacing the R/V *Bay Eagle*



Research on the *R/V Bay Eagle*



**Shark Research
Program
Longline Survey
(est. 1973)**

Research on the *R/V Bay Eagle*



**Winter Crab Dredge
Survey**
(est. 1990)

Research on the *R/V Bay Eagle*



**Chesapeake Bay
Multispecies Monitoring
Trawl Survey
(est. 2002)**

Potential Platform



R/V Rachel Carson – UMCES – 81 Ft.

Fiscal Year 2013 Funding Priorities

- Faculty & Staff Salary Increases
- Startup Packages & Outfitting Laboratories for New Faculty
- Strategic Placement of E&G Funded Research Technical Support
- Fund Raising and Development

FY 2013 Incremental E&G Revenues

Bonus	\$460,000
New Faculty Positions	\$525,000
Graduate Tuition & Fees	\$25,000
VRS/Health Increases	<u>\$480,000</u>
Total E&G Incremental Revenue:	\$1,490,000

FY 2013 Incremental E&G Expenditures & Reallocations

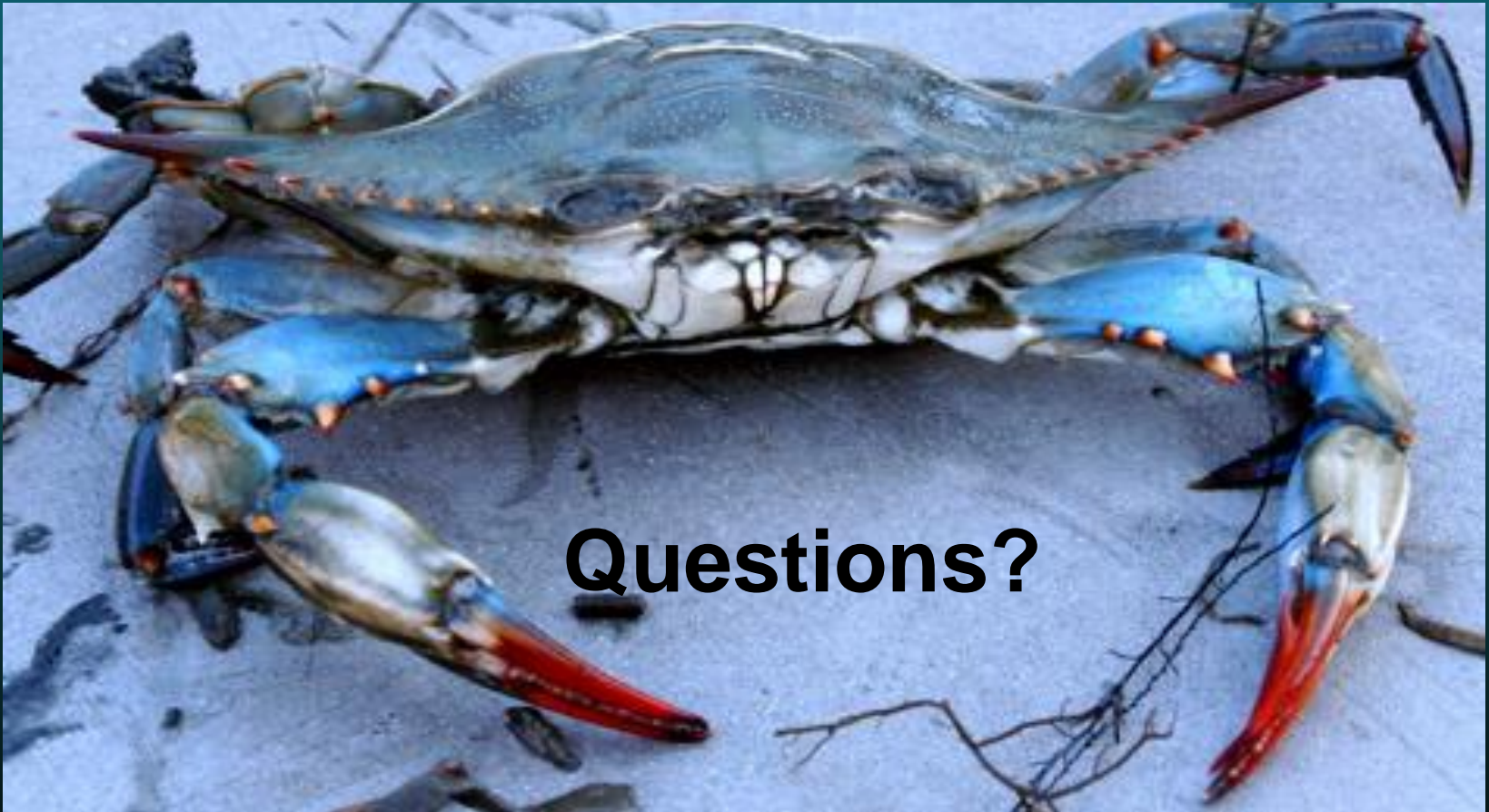
Expenditures:

Faculty & Staff Salary Pool	\$513,000
Startup For New Faculty	\$425,000
VRS/Health Increase	\$480,000
Search Costs for New Faculty (2 nd Round)	\$125,000

Reallocations:

College Reallocation	<u>\$(53,000)</u>
----------------------	-------------------

Total E&G Incremental Expenditures:	\$1,490,000
-------------------------------------	-------------



Questions?