

# **Construction Update**

## **Virginia Institute of Marine Science**

**Committee on Buildings and Grounds**

**Board of Visitors**

**College of William & Mary**

**December 1, 2010**



# The VIMS Campus





# Eastern Shore Campus Update



Fire

New Seawater Laboratory

Image © 2010 Commonwealth of Virginia  
© 2010 Google

©2010 Google

87 m

Imagery Date: Feb 1, 2007

37°36'29.53" N 75°41'12.19" W elev 2 m

Eye alt 304 m



# Eastern Shore Laboratory Fire

## November 18, 2010



Before



After

# Library/Laboratory Building



During



# Library/Laboratory Building



After

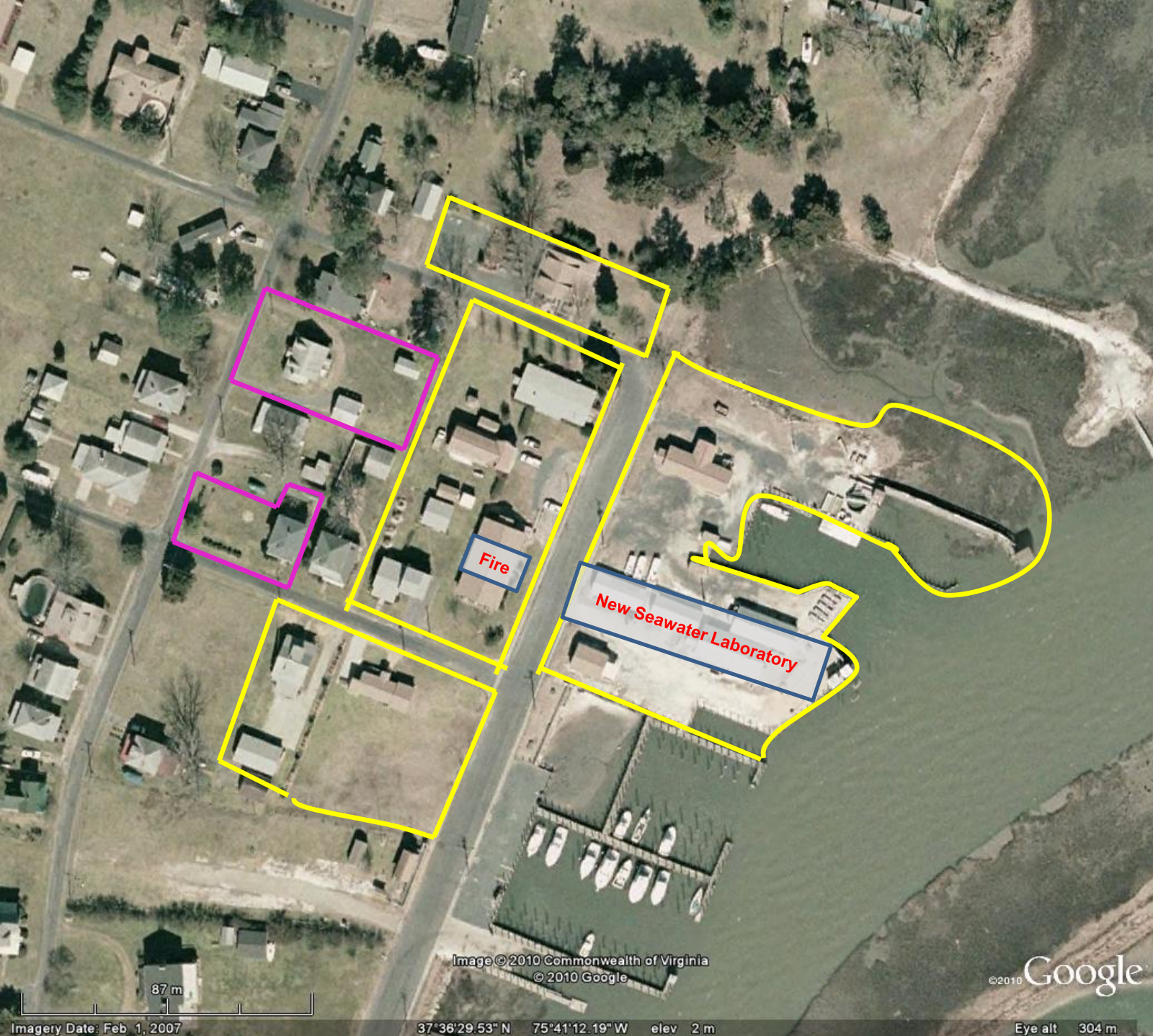


# Library/Laboratory Building



After





Current ESL  
Property Boundary

Boundaries of  
proposed purchases

Image © 2010 Commonwealth of Virginia  
© 2010 Google

©2010 Google

87 m

Imagery Date: Feb 1, 2007

37°36'29.53" N 75°41'12.19" W elev 2 m

Eye alt 304 m



25 Brooklyn Ave. Seen from the back property line where it adjoins  
our property.





5 Riverview including additional corner lot.  
Facing east.





# Active Projects

<b>Project</b>	<b>Type</b>	<b>End Date</b>	<b>Cost (in millions)</b>
Eastern Shore Seawater Laboratory	Replace	Spring 2011	\$3.7
Shoreline Erosion Control	New	Winter 2010	\$1.2
Research Storage Facility	New	Winter 2010	\$0.6
Electrical Upgrades: Chesapeake Bay Hall	Improvement	Winter 2010	\$0.3
Comprehensive Master Plan	Planning	Spring 2011	\$0.075



# Eastern Shore Seawater Laboratory

August 2010



November 2010



# Shoreline Erosion Control



Gloucester Point Campus



# Research Storage Facility

September 2010



November 2010

# Future Projects

<b>Project</b>	<b>Type</b>	<b>Estimated Cost ( in millions)</b>
Facilities Management Maintenance Facility	Replacement	\$4.1
Replacement of Oyster Hatchery	Replacement	\$9.5
Marine Advisory, Research, & Support Facility	New Construction	\$9.9
Research Vessel	Replacement	\$8.0
Addition to Watermen's Hall	Addition	\$5.0



# Questions?

