

Construction Update

Virginia Institute of Marine Science

Committee on Buildings and Grounds
Board of Visitors of the College of William
and Mary in Virginia

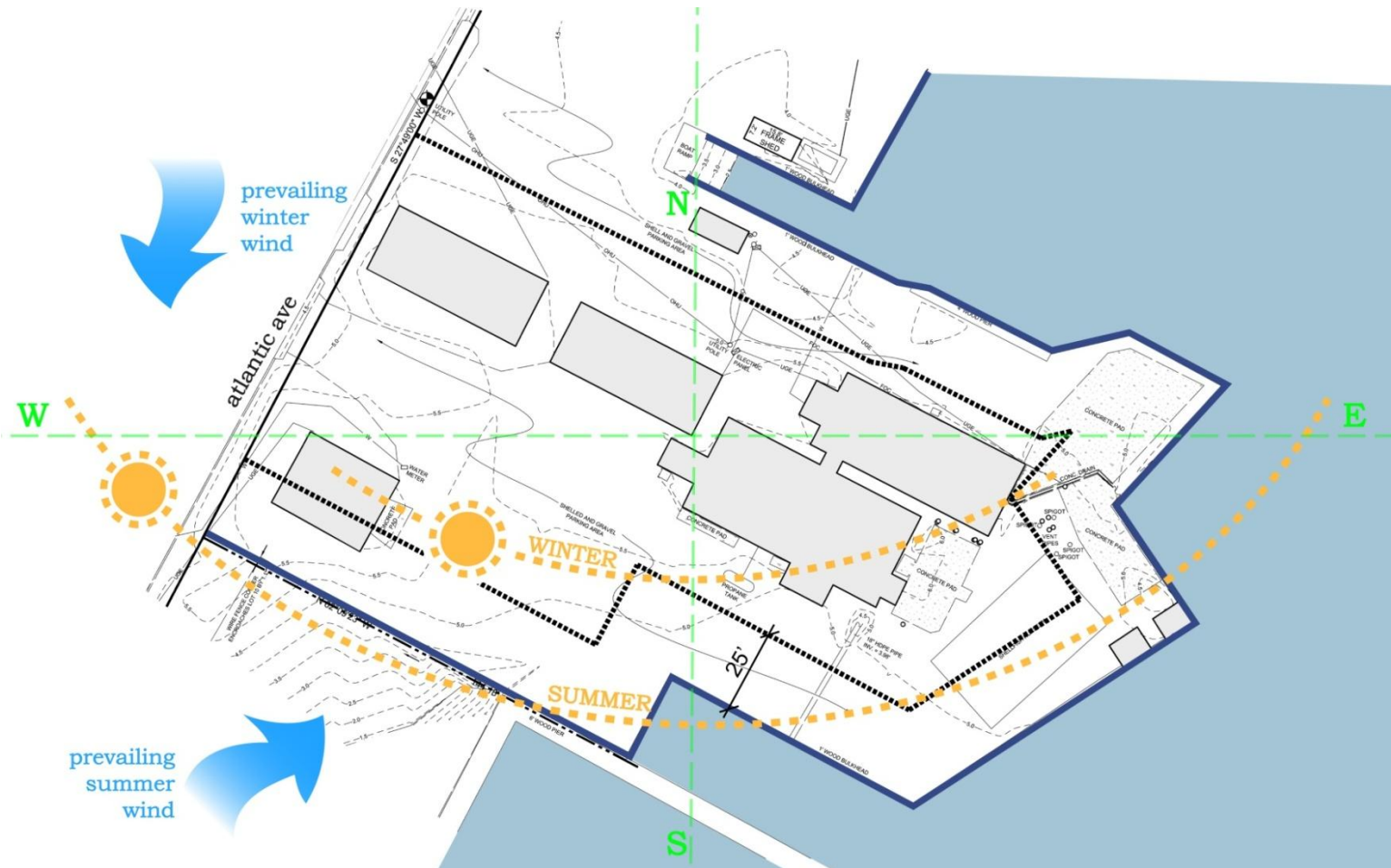
April 17, 2009



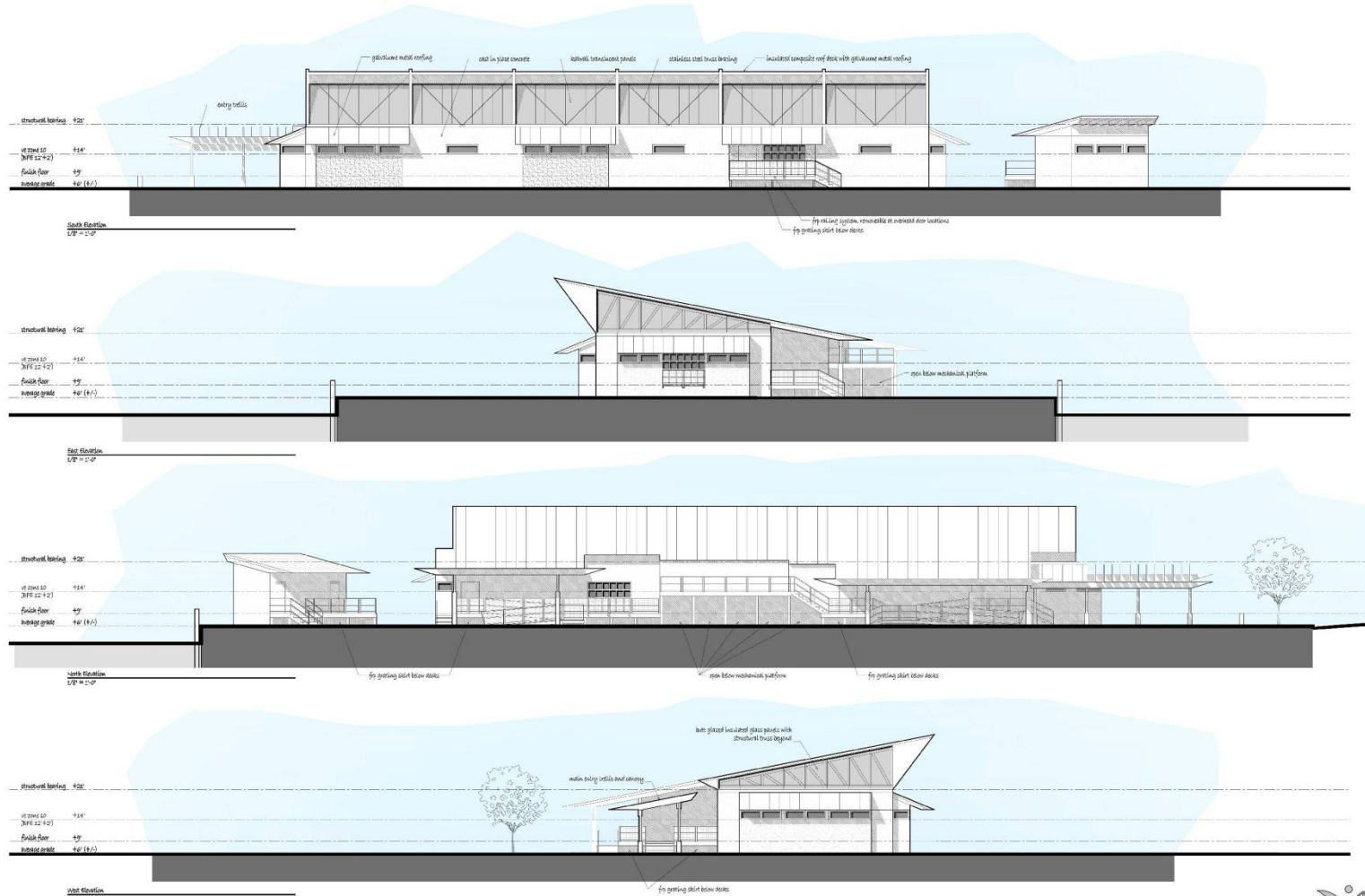
Projects In Design

Project	Type	Start Date	End Date	Cost (in millions)
Eastern Shore Seawater Laboratory	Replacement	July 2008	January 2011	\$4.2
Shoreline Erosion Control	Improvement	July 2008	June 2010	\$1.2
Research Storage Facility	Replacement	August 2002	August 2010	\$0.6
CBNERRVA Property Acquisition: Catlett Islands	Property Acquisition	July 2009	June 2010	\$1.5

Eastern Shore Seawater Lab



Eastern Shore Seawater Laboratory



SCALE: 1/8" = 1'-0"

WACHAPREAGUE, VA
VIMS ESSL

SCHEMATIC ELEVATIONS

4.7.2009



NOTE: THESE DOCUMENTS ARE THE PROPERTY OF THE ARCHITECT. THE ARCHITECT RETAINS CONTROL OF THESE DOCUMENTS. NO CHANGES OR REPRODUCTIONS SHALL BE MADE WITHOUT THE SPECIFIC CONSENT OF THE ARCHITECT. 2009

WACHAPREAGUE, VA - 100 WACHAPREAGUE ST. - 22089 - (757) 421-1400 - WWW.WACHAPREAGUEARCHITECTS.COM

VIA design architects, pc



VDOT TOLL PLAZA BUILDING
(VIEW OF PROJECT SITE)



PROPOSED NEW RESEARCH
STORAGE BUILDING



NUNNALLY HALL



CHEASPEAKE BAY HALL



SEAWATER RESEARCH LAB



ANDREWS HALL



AERIAL VIEW OF VIMS CAMPUS



RALEIGH HOUSE

RESEARCH STORAGE BUILDING

WILLIAM & MARY - VIRGINIA INSTITUTE OF MARINE SCIENCE

APRIL 3, 2009



ENGINEERS - ARCHITECTS - PLANNERS
WILLIAMSBURG, VIRGINIA

Projects Under Construction

Project	Type	Start Date	End Date	Cost (in millions)
Field Support Center	New	February 2005	Dec 2009	\$2.0
Electrical Upgrades: Chesapeake Bay Hall	Improvement	Sept 2007	March 2010	\$0.3
Construct Concrete Pier	Replacement	August 2007	Nov 2009	\$1.45

Field Support Center

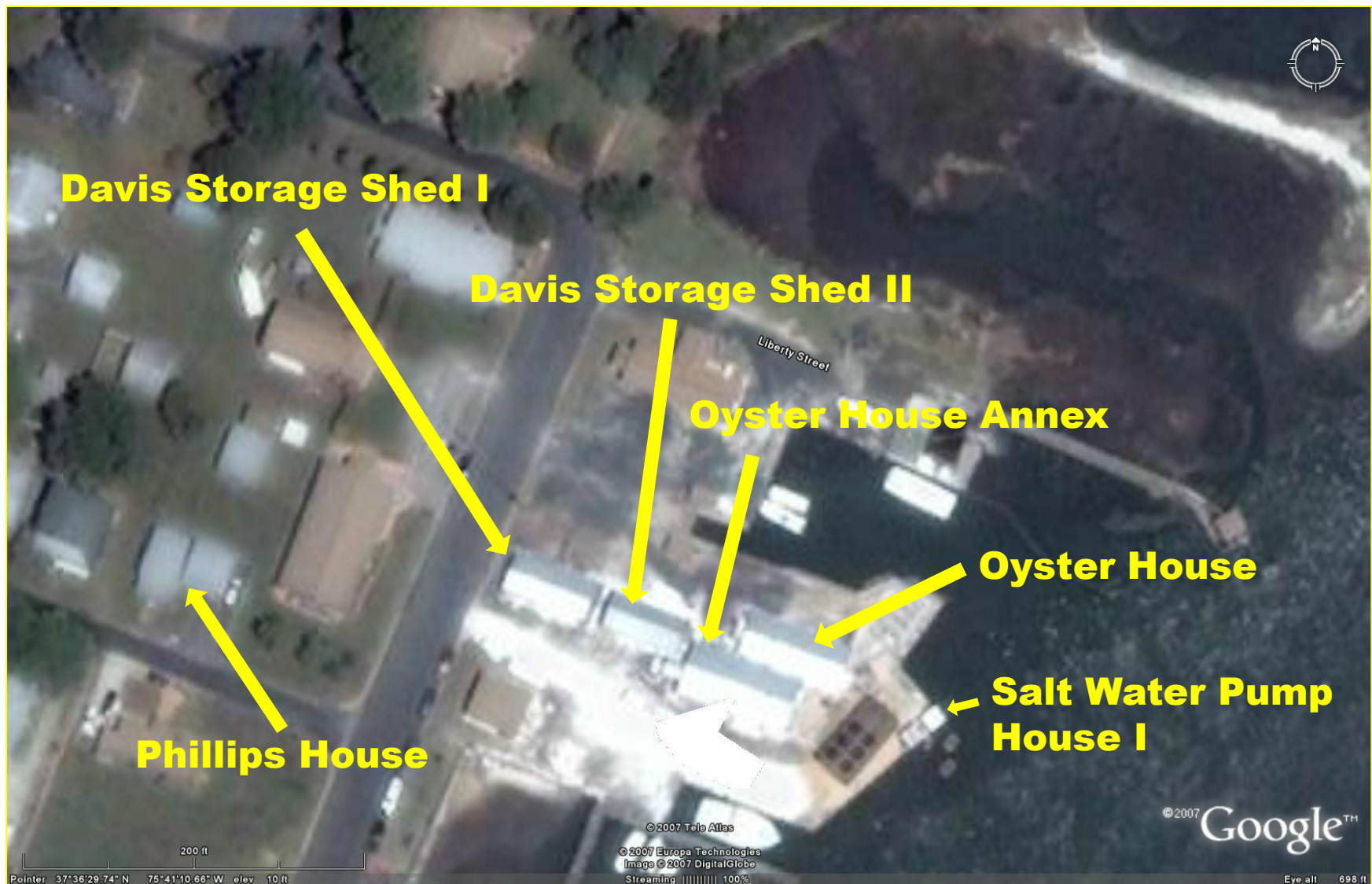




9/14/2009

Maintenance Reserve

- Planning
 - Evacuate Bank behind Collapsed Wood Bulkhead (\$180,000)
 - Replace Air Handlers in Watermen's Hall (\$443,000)
 - Replace Chiller Rack, Electric Boiler and Cooling Tower at Watermen's Hall (\$388,000)
 - Various Roof Replacements (\$78,000)

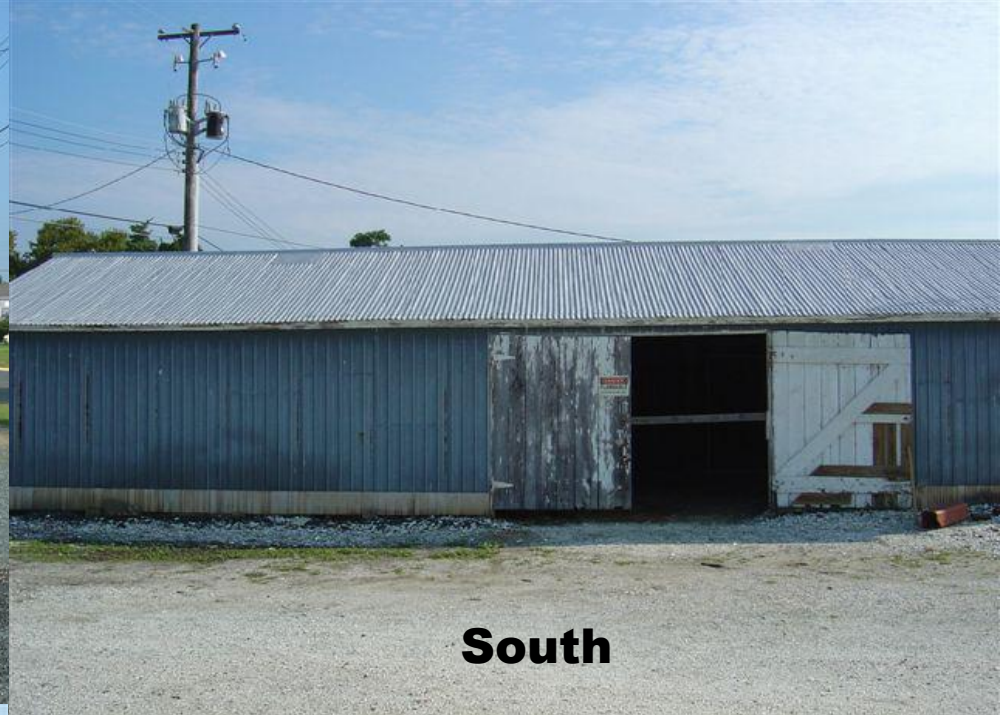


VIMS

Resolution 4: Demolish six buildings for construction of the new Eastern Shore Seawater Laboratory



North



South



West



North



South





South



East







VIMS

Resolution 4: Demolish six buildings to allow for future development on the Gloucester Point campus



North



South



VIMS



West

Franklin Hall

FAACS 00B13



North

8/22/2009



South

8/22/2009



East

8/22/2009



West

8/22/2009



North

8/22/2009



South

8/22/2009



East

8/22/2009



West

8/22/2009



North



South



East

8/22/2009



West

8/22/2009



North



South



East



West



North

8/22/2009



South

8/22/2009



East

8/22/2009



West

8/22/2009

