



Buildings and Grounds Committee

Construction Update



Current Construction Projects

Current Construction Projects

- ❑ ISC Phase II
 - Completion March 2009
- ❑ Mason School of Business
 - Completion June 2009
- ❑ Power Plant
 - First Phase Complete December 2008
 - Second Phase – Chiller Plant Addition
 - Complete March 2010



Integrated Science Center ~ Phase II









Mason School of Business



































Power Plant





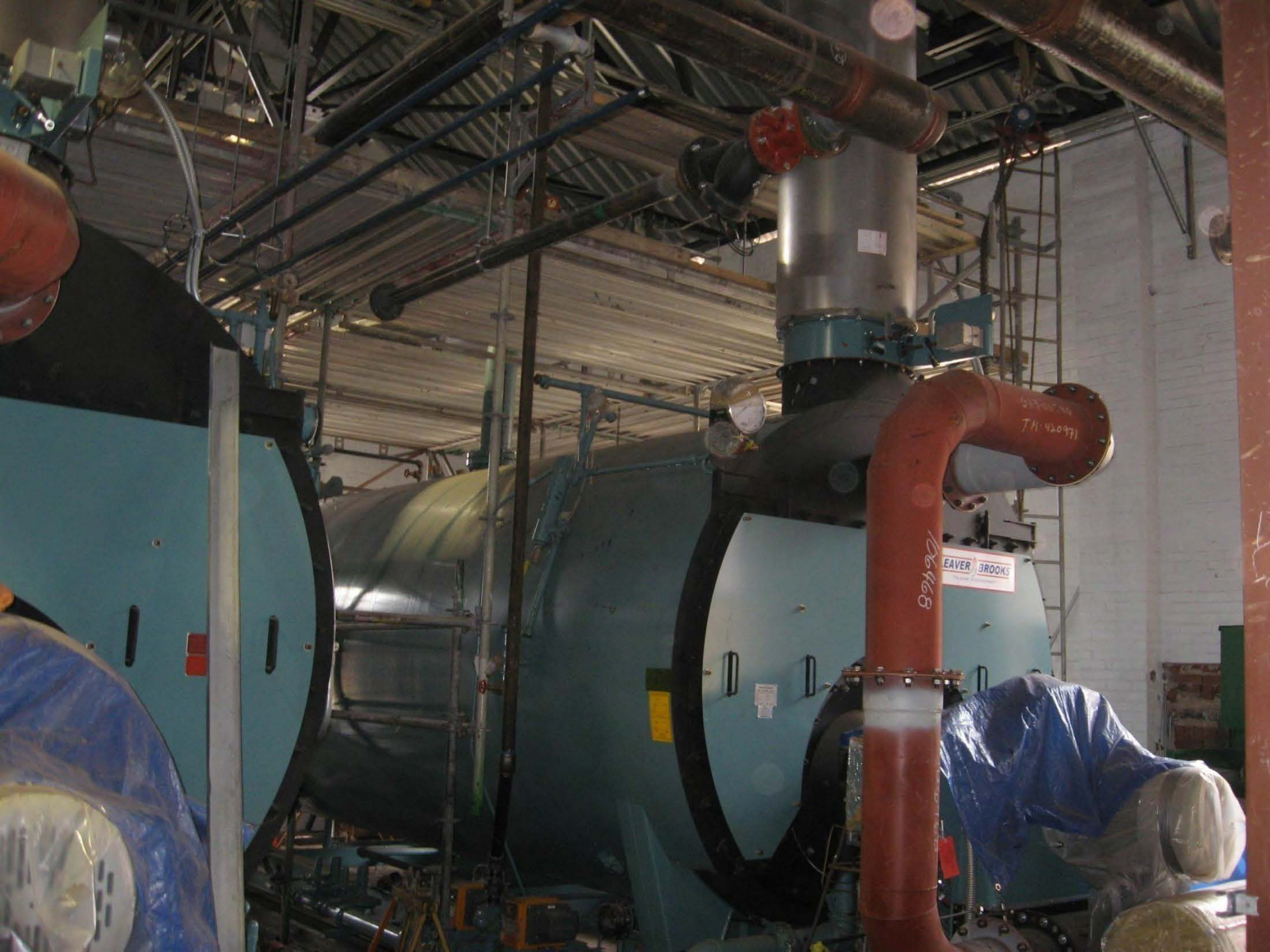


WILLIAMS
PLUMBING
800-782-3500
NSC 04239



NO PARKING

NO PARKING



Projects in Design

- ❑ School of Education
 - Begin Construction October 2008
- ❑ Small Hall
 - Begin Construction in November 2008
 - Phase I (Additions)complete September 2009
 - Phase II (Renovations)December 2010
- ❑ Career Services Center
 - Beginning Design
- ❑ Tucker Hall
 - Design funding received

Projects in Pre-Design

- ▣ ISC III
- ▣ Arts Complex

New Capital Funding Process

- Pre-planning – Basic feasibility
- Design through “Preliminary Drawings”
 - 35%
- Working Drawings and Construction
- Six-Year Capital Plan Impact