

EDS Operation; Hitachi Scanning Electron Microscope

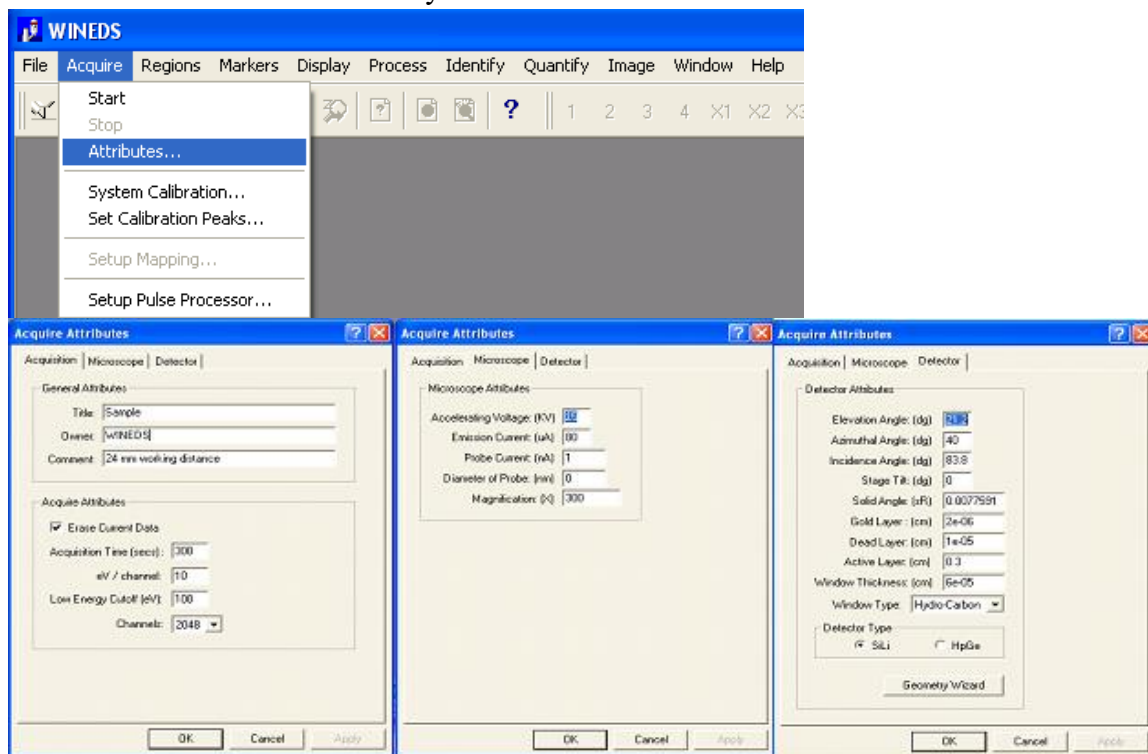
Instructions for Use

These instructions are not to take the place of reading the manual. Always have the manual handy to refer to for more in-depth information.

First Things First! Sign in the log notebook.

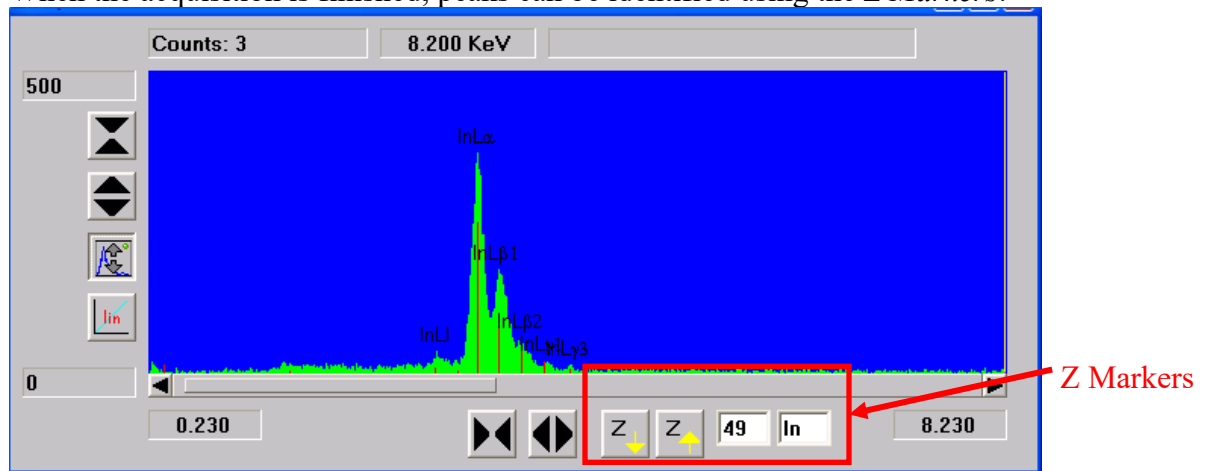
WinEDS Program:

- If you are planning to run EDS on your sample, make sure that the LN2 tank has been filled for at least one hour before turning on the detector, and that the EDS power supply has had at least fifteen minutes to warm up before use. The on/off switch for the power supply is on the back.
- Once the system has warmed up, open the **WinEDS** program.
- In order for the EDS to operate properly, the SEM must be set to a scanning speed of 3.
- When you have a good SEM image of the area on you want EDS on, select *Acquire-> Attributes*. Make sure that the *Accelerating Voltage* and the *Emission Current* are set correctly.

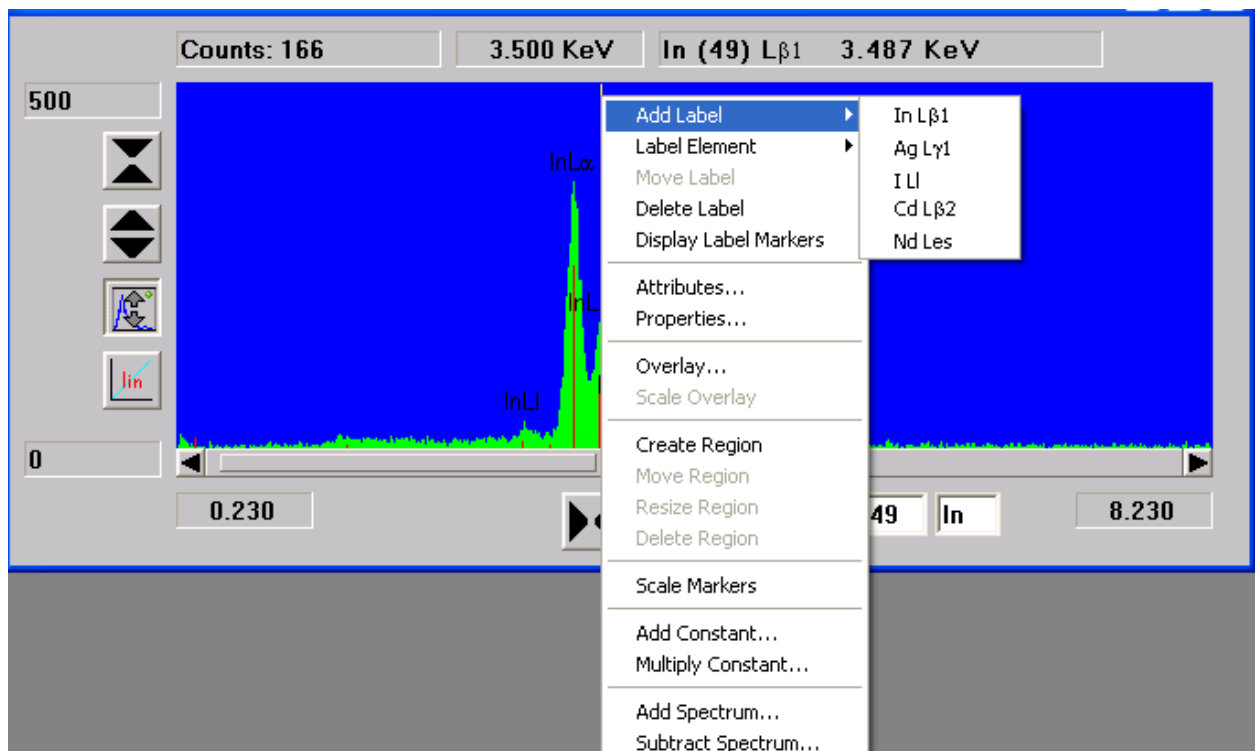


- Once the attributes are set correctly, select *Acquire-> Start*. EDS will run for the set time unless you stop it. If you want to stop acquiring, select *Acquire-> Stop*.

- When the acquisition is finished, peaks can be identified using the *Z Markers*.



- Add labels to peaks by first clicking on the peak you wish to label, then right clicking and selecting *Add Label*.



- To save the acquisition, select *File-> Save*. You can also export the file as a .bmp image using *File-> Export*.