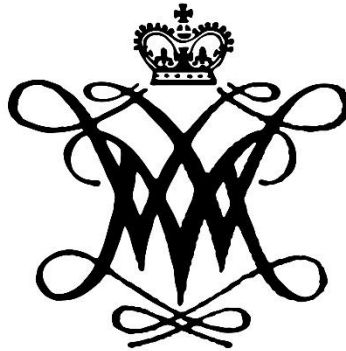


**WILLIAM & MARY
REVES CENTER FOR INTERNATIONAL STUDIES
FAMILY HANDBOOK**



**AN INSIDER'S GUIDE TO WILLIAMSBURG:
WRITTEN BY THE INTERNATIONAL FAMILY NETWORK FOR INTERNATIONAL
FAMILIES**

Table of Contents	Page(s)
Reves Center Services	3
Driver's Licenses and Virginia ID Card	4
Walking & Local Transportation	5
US Healthcare System	6
Health Care Providers	7-8
Schools and Childcare	9-11
Shopping	12-13
Getting a Library Card	13
English Language Resources	13

WELCOME TO WILLIAMSBURG!

This handbook was written for international families by members of the International Family Network (IFN). The handbook has a summary of resources and suggestions to help you transition to life in Virginia.

IFN members recommended all the information in this handbook. Current and past IFN members wanted to share their knowledge and experiences with you as you settle into your new life in Williamsburg. We hope that you will find this handbook helpful and we wish you and your family all the best as you build your new life in Williamsburg.

We look forward to seeing you at upcoming Reves Center and IFN events, as well as other the university related activities!

Warm regards,

IFN members and the staff at Reves Center



WILLIAM & MARY

REVES CENTER FOR INTERNATIONAL STUDIES

200 S. BOUNDARY STREET, WILLIAMSBURG, VA 23185 (physical address)

P.O. Box 8795, Williamsburg, VA 23187-8795 (mailing address)

PRIMARY PHONE: 757.221.3590

www.wm.edu/internationalstudents

WILLIAM & MARY SCHOOL OF MARINE SCIENCE AT VIMS

OFFICE OF INTERNATIONAL SERVICES

SOWERS HOUSE 102, GLOUCESTER POINT, VA 23062

PHONE: 804.684.7101

VIMS OFFICE HOURS: THURSDAYS, 1:00-3:30PM

The Reves Center helps with...

- ✓ Visa and immigration matters
- ✓ Understanding requirements for SSNs, driver's licenses, and Virginia State identification cards
- ✓ Information about campus resources
- ✓ Any problems you might have
- ✓ Making connections with W&M students, faculty, and staff
- ✓ Support for family members
- ✓ Getting involved with the local community

INTERNATIONAL STUDENTS, SCHOLARS & PROGRAMS (ISSP) STAFF MEMBERS

Mona David-Starman, Community Programs Assistant mstarman@wm.edu

Coordinator of the International Family Network/Scholars programs

Eva Wong, Director for International Student, Scholars & Programs ywong@wm.edu 757.221.3166

Emily Bailey, Assistant Director for Immigration Services ehbailey@wm.edu 757.221.3567

Zabrina Williams, Immigration Services Coordinator zkwilliams@wm.edu 757.221.1138

Verdiana Fontana, ISSP Administrative Assistant vfontana@wm.edu 757.221.1279

Chuqiu Wu, Graduate Assistant for International Programs globe@wm.edu

DRIVER'S LICENSES, VIRGINIA ID CARDS, AND DRIVING IN THE US

For more detailed information regarding driver's licenses, Virginia ID cards, and registering a car, visit the Virginia Department of Motor Vehicles (DMV): www.dmv.state.va.us or the Reves Center website (www.wm.edu/offices/revescenter/issp/life)

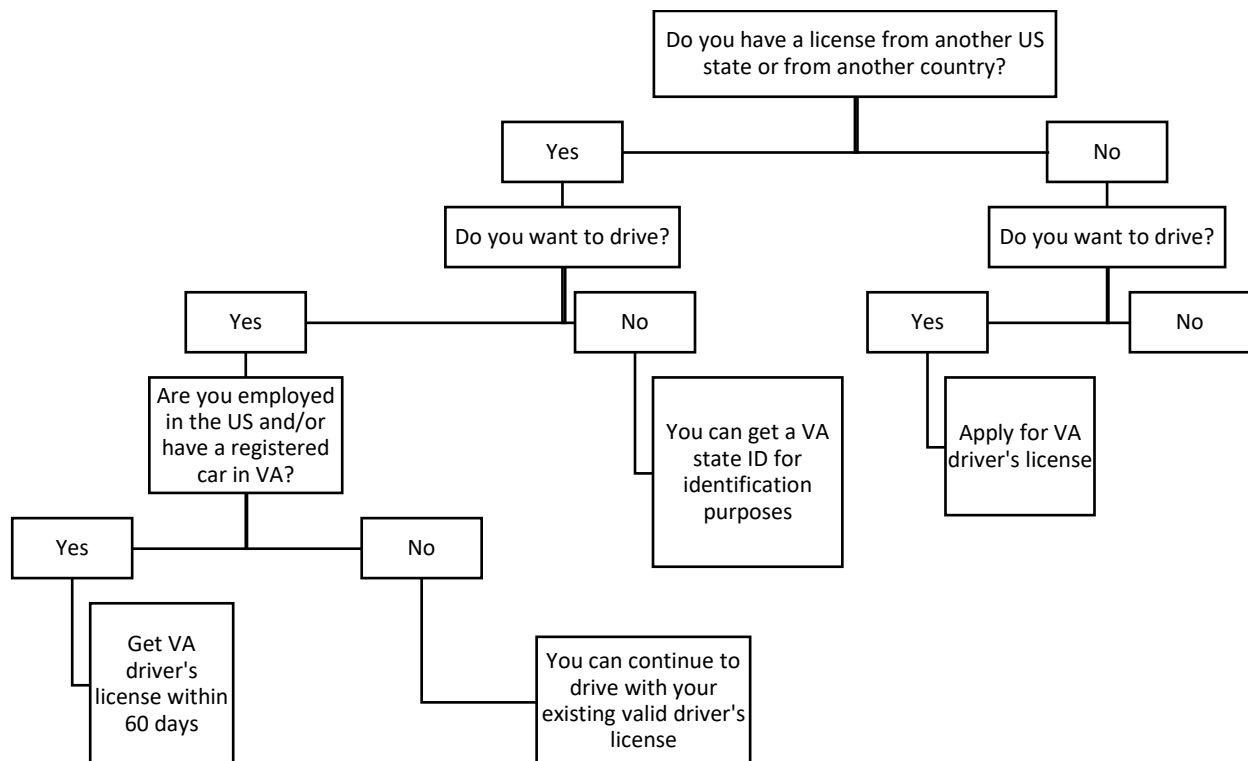
Williamsburg DMV: 5235 John Tyler Highway, Williamsburg, VA 23185. The **Jamestown Line of the Williamsburg Bus System** will take you there.

Gloucester DMV: 6577 George Washington Memorial Highway, Gloucester, VA 23061.

Visit Williamsburg Transportation's website www.williamsburgtransport.com or you can use **Google Transit** (www.google.com/transit) for directions and a route planner.

You can drive with a valid foreign driver's license in Virginia. However, it is advisable to apply for a VA Driver's License if you plan to do a lot of driving in Virginia or to other US states. It is required if you work or register a car in Virginia.

DO I NEED A DRIVER'S LICENSE?



WALKING & LOCAL TRANSPORTATION

Walking

Apps such as [Google Maps](#) provides walking directions and is a great tool to help you find your way around campus and in Williamsburg.

Public Transportation

The Williamsburg Trolley and Bus Lines provide a low-cost or method of local transportation.

For the most up to date information on trolley and bus routes and schedules, visit Williamsburg Transportation's website <http://gowata.org/> or you can use *Google Maps* (<http://maps.google.com>) for directions and a route planner.



Reves Center Pumpkin Carve

UNDERSTANDING THE US HEALTHCARE SYSTEM

1. **Healthcare is expensive in the US.** Due to the very high cost of health care, insurance is **required** for all international students, J-1 scholars, and family members in J-2 status.
 - Insurance is not required for family members in F-2 status; however, we highly recommend that all family members have insurance coverage.
2. **Always carry your insurance card with you.** If you go to a hospital or see a doctor, you will need to show your insurance card when you arrive.
 - Ask if the doctor is covered by your insurance
 - Ask for the cost of the treatment and prescriptions (e.g., medication) and if it is covered by your insurance
3. The words “**Doctor**” and “**Physician**” mean the same thing. “**Primary Care Physician**” is a doctor you would visit if you were feeling ill or needed a routine check-up.
4. **Need to see a specialist?** To see a specialist (e.g., allergist), you usually need a referral from your Primary Care Physician (or the insurance won't cover it).
5. **Need medication?** You can go to a pharmacy or drugstore (e.g., CVS, Walgreens, Rite Aid).
6. **Where to go for medical care:**

Hospitals (Emergencies)

- Only for serious emergencies such as severe bleeding, head injury, loss of consciousness, etc.
- **Call 911** for ambulance transport, if necessary
- **Sentara Williamsburg Regional Medical Center** - 100 Sentara Cir., Williamsburg
757-984-6000
- **Riverside Doctors' Hospital Williamsburg** - 1500 Commonwealth Ave., Williamsburg
757-585-2200
- **Riverside Walter Reed Hospital** - 7519 Hospital Drive, Gloucester, VA, 23061 804-693-8899

Urgent Care Clinics (Non-emergencies)

- If you need medical care, and you cannot or are unwilling to wait for an appointment at your doctor's office, but you are not sick enough to visit the hospital, then you should seek care at an Urgent Care Clinic.
- **M.D. Express Urgent Care** - 120 Monticello Ave., Williamsburg 757-564-3627
- **Velocity Urgent Care** - 4374 Newtown Ave., Williamsburg 757-772-6124
- **Velocity Urgent Care Gloucester** - 5659 Parkway Drive, Gloucester 804-381-4361
- **M.D. Express Urgent Care Gloucester** - 6567 George Washington Memorial Hwy, Gloucester, 804-824-9962

7. Non-Emergency Transportation Options

- **Historic Taxi** - 757-258-7755 **Williamsburg Taxi** - 757-221-0004
- **Williamsburg Area Transit (WAT)** - Visit www.williamsburgtransport.com for more information.
- **Lyft** (rideshare service) - Access through smartphone app at <http://www.lyft.com>
- **Uber** (rideshare service) - Access through smartphone app at <http://www.uber.com>

HEALTH CARE PROVIDERS

Doctors and Physicians

PROVIDERS	ADDRESS	PHONE
Olde Towne Medical & Dental Center (will accept patients without insurance and patients can pay on a sliding scale)	5249 Olde Towne Road, Suite D Williamsburg, VA 23188	(757) 259-3258
Riverside Williamsburg Family Medicine	120 Kings Way, Suite 1400 Williamsburg, VA 23185	(757) 345-2555
Sentara Family Medicine Physicians	4374 New Town Avenue, Suite 200 Williamsburg, VA 23188	(757)-220-2795
Tidewater Physicians Multispecialty Group Williamsburg Family Medicine	132 Professional Circle Williamsburg, VA 23185	(757) 345-6491
Tidewater Physicians Multispecialty Group Colonial Family Medicine	4125 Ironbound Road, Suite 200 Williamsburg, VA 23188	(757) 345-2829

Women's Health Care (OBGYN)

OBGYNs are doctors who provide care during pregnancy, as well as women's health, and yearly wellness exams.

PROVIDERS	ADDRESS	PHONE
Olde Towne Medical & Dental Center (will accept patients without insurance and patients can pay on a sliding scale)	5249 Olde Towne Road, Suite D Williamsburg, VA 23188	(757) 259-3258
Riverside Partners in Women's Health	120 Kings Way, Suite 3400 Williamsburg, VA 23185	(757) 253-5600
Williamsburg Obstetrics & Gynecology	500 Sentara Cir Suite 105, Williamsburg, VA 23188	(757) 253-5653

Pediatrics (Children's Doctor)

PROVIDERS	ADDRESS	PHONE
Olde Towne Medical & Dental Center (will accept patients without insurance and patients can pay on a sliding scale)	5249 Olde Towne Road, Suite D Williamsburg, VA 23188	(757) 259-3258
Sentara Pediatric Physicians - Williamsburg	4374 New Town Ave, Suite 202 Williamsburg, VA 23188	(757) 253-5757
Sentara Pediatric Physicians - Gloucester	5659 Parkway Dr., Suite 230 Gloucester, VA 23061	(804) 210-1055
Pediatrics Associates of Williamsburg (PAW)	119 Bulifants Blvd. Williamsburg, VA 23188	(757) 564-7337

Dentists

Dental care is typically not covered under health insurance policies. It is usually necessary to have a separate insurance policy for dental care. If your insurance policy does not cover dental care, you should call the dentist office directly, and ask how much they charge for non-insured patients, so you have an idea of how much it will cost.

Some international families have used the Olde Towne Medical & Dental Center for their dental needs:

5249 Olde Towne Road, Suite D
Williamsburg, VA 23188
(757) 259-325



Jamestown Settlement

REGISTERING YOUR CHILD FOR SCHOOL

1. Find out which school district your child is zoned for

- Children attending public school are assigned to different school districts depending on where your family lives
- By law, your child is required to go to the school designated in that district
- Find out where to enroll your child by looking up your school zone:
 - Williamsburg and James City County at <https://wjccschools.org/>
 - York County at <https://yorkcountyschools.org/>
 - Gloucester County at <http://gloucester.schooldesk.net/>

2. Register your child for school

- After determining which school your child is zoned for, visit the school's website for information about registration
- Download and complete the registration form
- You will also usually need **to bring the following documents for the registration:**
 - Child's birth certificate
 - Two documents showing proof of residence (e.g., documents showing your address)
 - Medical and immunization record. The child must have the required immunization before beginning school (see <http://www.vdh.virginia.gov/immunization/requirements/>)
 - Photo ID of the parent doing the registration
- Bring the completed registration form and required documents to your child's school. The child does not need to be present at registration

3. Questions to ask

- What time does school begin and end?
- If your child will **ride the school bus**, ask information about the bus route (e.g., pick-up and drop-off times, location of bus stop)
- Ask about special programs such as English as a Second Language classes, tutoring, after school activities, etc.
- Ask for a school calendar – it will show vacation days, exam days, and half-days.

PRE-SCHOOLS & CHILDCARE

PRESCHOOLS & CHILDCARE	ADDRESS	PHONE	TIP
Goddard School	4280 Casey Blvd. Williamsburg, VA 23188	(757) 220-1740	Spots fill up very quickly in most pre-schools. Therefore, we recommend that you contact your desired pre-school/childcare to be placed on the waiting list before coming to the US.
Kensington School	3435 John Tyler HWY, Williamsburg, VA 23188	(757) 645-2047	
La Petite Academy	3190 Lake Powell Road Williamsburg, 23185 5260 Olde Towne Road Williamsburg, 23185	(757) 253-1938 (757) 220-0121	
Walsingham Academy	1100 Jamestown Rd. Williamsburg, VA 23187	(757) 229-2642	
Williamsburg Campus Child Care	114 Grigsby Dr. Williamsburg, VA 23187	(757) 221-2136	
Williamsburg Montessori School	4200 Longhill Rd. Williamsburg, VA 23188	(757) 565-0977	
Williamsburg Parent Cooperative Preschool	1333 Jamestown Rd. Williamsburg, VA 23185	(757) 229-3407	
WISC Kids Club	5700 Warhill Trail Williamsburg, VA 23188	(757) 253-1947	

LANGUAGE SCHOOLS	ADDRESS	CONTACT
Newport News Japanese School	600 Harpersville Rd. Newport News VA 23601	(757)-768-3731
W&M Confucius Institute (Chinese)	Rowe House 314 Jamestown Rd.	(757) 221-1286

HOW TO FIND CHILDCARE

W&M Child Care Listserv

The W&M's Women's Network maintains a listserv of over 200 W&M students who are interested in providing childcare for W&M faculty, staff, students, and scholars.

To advertise a babysitting opportunity, send an email message with a description of your needs and your contact information to childcare@lists.wm.edu

As with any childcare opportunity, we urge you to ask the students for references and background information before you hire them. The university is providing this listserv as a means to connect possible babysitters with families and have not vetted the students on the list.

Payment for Child Care in your home:

- Suggested payment: \$10.00 to \$25.00 an hour.
- Payment will be more for children under one year old.

Questions to ask a potential Babysitter or Nanny

- How many years have you been working with children?
- How many families have you cared for and how old were the children?
- Do you know First Aid and CPR?
- How will you handle an emergency?
- How much will you charge?

For more information please refer to the [babysitters' interview and checklist](https://www.sittercity.com/babysitters/sitter-interview-checklist) at <https://www.sittercity.com/babysitters/sitter-interview-checklist>



W&M Homecoming Game

SHOPPING

GROCERY/FOOD

STORE	ADDRESS	TRANSPORTATION
WILLIAMSBURG		
Food Lion	1234 Richmond Road	Walking Red bus line
	5251 John Tyler Hwy	Jamestown bus line
Trader Joe's	5224 Monticello Ave.	Red bus line
Aldi	1504 Richmond Road	Trolley
Plubix	4660 Monticello Ave.	Red bus line
GLOUCESTER		
Food Lion	2292 York Crossing Drive, Hayes	Driving
Aldi	7176 George Washington Memorial Hwy, Hayes	Driving
Walmart	6819 Walton Ln., Gloucester Courthouse	Driving

INTERNATIONAL GROCERY STORES

STORE	TYPE	ADDRESS	NOTES
Aldi	Varies	1504 Richmond Road	Discounted grocery store (based in Europe)
Cost Plus World Market	Varies	5225 Settlers Market Blvd.	Has a wide variety of international foods
Farm Fresh--Denbigh	International Market	353 Chatham Dr. Newport New	Has a wide variety of international foods.
E-Mart	Asian/Latin/South Asian	13270 Warwick Blvd. Newport News	Has a wide variety of international foods.
Kielbasa Euro Deli	Eastern European	113 Palace Lane, Suite P. Williamsburg	Polish food and more
La Tienda	Spanish	1325 Jamestown Road	La Tienda also has a restaurant.
Trader Joe's	Varies	5000 Settlers Market Blvd.,	Has a wide variety of international foods

SHOPPING FOR NON-GROCERY ITEMS (HOME, CLOTHES & BICYCLES ETC.)

STORE	ADDRESS	WEBSITE	TRANSPORTATION
WILLIAMSBURG			
Premium Outlets	5715-62A Richmond Rd.	www.premiumoutlets.com	Blue bus line
Target	4630 Monticello Ave.	www.target.com	Red bus line
Walmart	4670 Casey Blvd.	www.walmart.com	Red or Trolley

HOW TO GET A LIBRARY CARD

The [Williamsburg Regional Library](#) offers free library cards for Williamsburg, James City County and York County residents. You can apply for a library card for free by showing a picture identification and proof of your current address (utility bill, lease agreement, driver's license, etc.). Children can also apply for library cards.

These public libraries have sections for children books and DVDs. They also hold many activities for children such as story time for toddlers and babies.

<p>The Williamsburg Library 515 Scotland Street Williamsburg, VA 23185 Phone: (757) 259-4040</p>	<p>James City County Library 7770 Croaker Road Williamsburg, VA 23188 Phone: (757) 259-7770</p>
--	---

ENGLISH LANGUAGE RESOURCES

RESOURCE	PROGRAMS	CONTACT INFORMATION
W&M English Conversation Club	Conversation club run by the Reves Center for international families and scholars. The club meets on Mondays and Wednesdays from 9-10:30am.	Mona Starman, mstarman@wm.edu
College Partnership for Adult Learners (CPALs)	CPALs is a William & Mary student-run organization that offers free English language classes for the local community. Classes meet every Tuesday and Thursday evenings.	cpalearners@gmail.com
Literacy For Life	Classes and tutoring for international families: Literacy for Life provides individualized tutoring for adults in reading, writing, and math, and English for speakers of other languages.	William & Mary School of Education 301 Monticello Avenue Williamsburg, VA 23187 (757) 221-3325 https://literacyforlife.org/