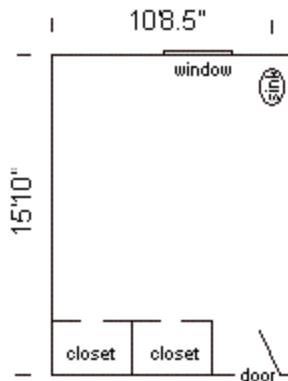


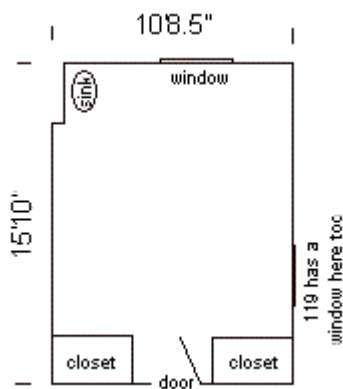
Willis Hall First-Floor Rooms

Willis 107



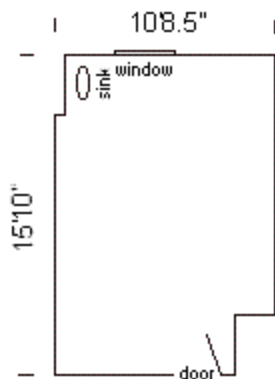
| | |
|---------------------|-----------------|
| Room occupancy | 2 |
| Ceiling height | 8'4" |
| # of outlets | 6 |
| Sink | yes |
| Bathroom Facilities | hall |
| Built-in furniture | no |
| Medicine Cabinet | yes |
| Closet size | 3'5" d x 2'6" w |
| Window size | 5'2" h x 3'2" w |
| Air-conditioned | yes |

Willis 108, 114, 117, 119



| | |
|---------------------|------------------------------|
| Room occupancy | 2 |
| Ceiling height | 8'4" |
| # of outlets | 5 (108, 119) 6 (114, 117) |
| Sink | yes |
| Bathroom Facilities | hall |
| Built-in furniture | no |
| Medicine Cabinet | yes |
| Closet size | 3'5" d x 2'6" w |
| Window size | 5'2" h x 3'2" w |
| Air-conditioned | yes |

Willis 109

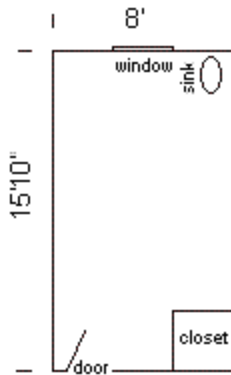


| | |
|---------------------|-----------------|
| Room occupancy | 2 |
| Ceiling height | 8'4" |
| # of outlets | 5 |
| Sink | yes |
| Bathroom Facilities | hall |
| Built-in furniture | none |
| Medicine Cabinet | yes |
| Closet size | wardrobe |
| Window size | 5'2" h x 3'2" w |
| Air-conditioned | yes |

Floor plans are provided to demonstrate differences between room types. Individual rooms vary. All dimensions and square footage are approximate and should not be relied upon as representation, express or implied, of your actual assigned room.

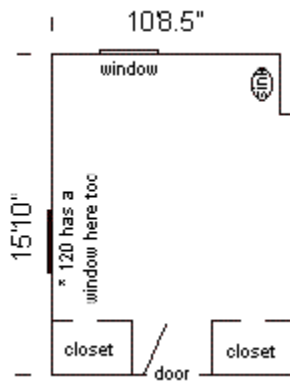
Willis Hall First-Floor Rooms

Willis 110



| | |
|---------------------|-----------------|
| Room occupancy | 1 |
| Ceiling height | 8'4" |
| # of outlets | 6 |
| Sink | yes |
| Bathroom Facilities | hall |
| Built-in furniture | closet |
| Medicine Cabinet | yes |
| Closet size | 3'5" d x 2'6" w |
| Window size | 5'2" h x 3'2" w |
| Air-conditioned | yes |

Willis 112, 115, 116, 120



| | |
|---------------------|------------------------------|
| Room occupancy | 2 |
| Ceiling height | 8'4" |
| # of outlets | 6 (112, 115, 116) 4 (120) |
| Sink | yes |
| Bathroom Facilities | hall |
| Built-in furniture | closets |
| Medicine Cabinet | yes |
| Closet size | 3'5" d x 2'6" w |
| Window size | 5'2" h x 3'2" w |
| Air-conditioned | yes |

Floor plans are provided to demonstrate differences between room types. Individual rooms vary. All dimensions and square footage are approximate and should not be relied upon as representation, express or implied, of your actual assigned room.