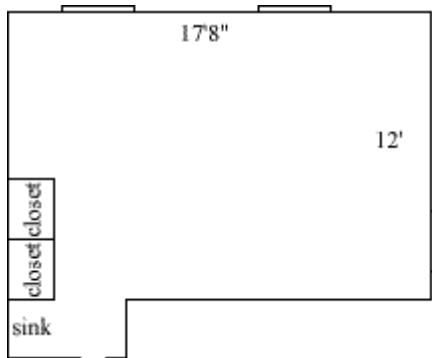


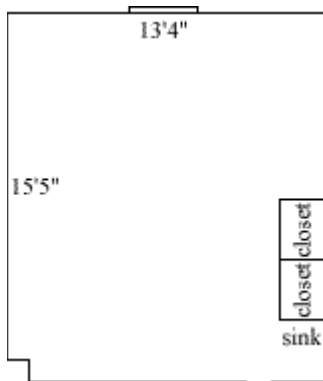
Stith Hall Third-Floor Rooms

Stith 328



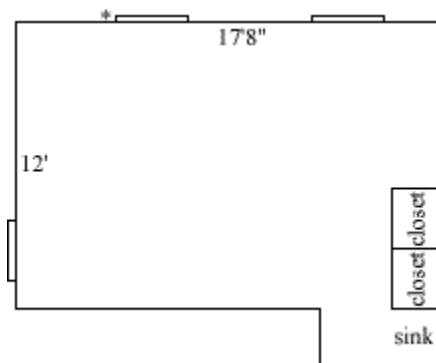
| | |
|---------------------|------------|
| Room occupancy | 2 |
| Ceiling height | 9 |
| # of outlets | 5 |
| Sink | yes |
| Bathroom Facilities | hall |
| Built in furniture | shelves |
| Medicine Cabinet | yes |
| Closet size | 2'7" x 2' |
| Window size | 3 -3' x 5' |
| Air conditioned | yes |

Stith 329, 330, 331, 334, 335



| | |
|---------------------|-----------|
| Room occupancy | 2 |
| Ceiling height | 9 |
| # of outlets | 5 |
| Sink | yes |
| Bathroom Facilities | hall |
| Built in furniture | shelves |
| Medicine Cabinet | yes |
| Closet size | 2'7" x 2' |
| Window size | 3' x 5' |
| Air conditioned | yes |

Stith 332, 333

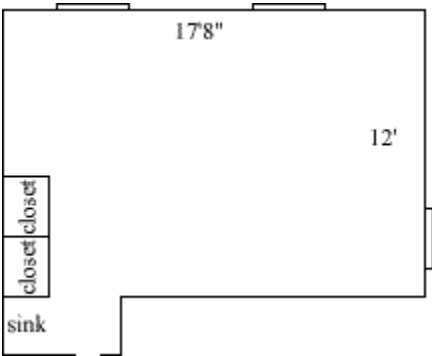


| | |
|--|------------|
| Room occupancy | 2 |
| Ceiling height | 9 |
| # of outlets | 5 |
| Sink | yes |
| Bathroom Facilities | hall |
| Built in furniture | shelves |
| Medicine Cabinet | yes |
| Closet size | 2'7" x 2' |
| Window size | 3 -3' x 5' |
| * in room 151 there are only 2 windows The starred window is not present. | |
| Air conditioned | yes |

Floor plans are provided to demonstrate differences between room types. Individual rooms vary. All dimensions and square footage are approximate and should not be relied upon as representation, express or implied, of your actual assigned room.

Stith Hall Third-Floor Rooms

Stith 336



| | |
|---------------------|------------|
| Room occupancy | 2 |
| Ceiling height | 9 |
| # of outlets | 5 |
| Sink | yes |
| Bathroom Facilities | hall |
| Built in furniture | shelves |
| Medicine Cabinet | yes |
| Closet size | 2'7" x 2' |
| Window size | 3 -3' x 5' |
| Air conditioned | yes |

Floor plans are provided to demonstrate differences between room types. Individual rooms vary. All dimensions and square footage are approximate and should not be relied upon as representation, express or implied, of your actual assigned room.