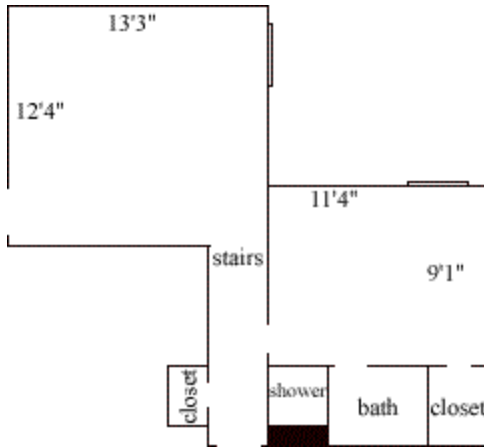


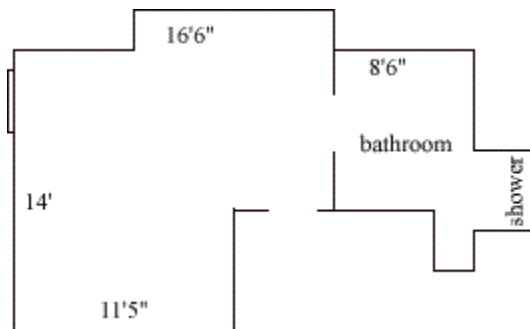
# Spotswood Hall First-Floor Rooms

## Spotswood 100



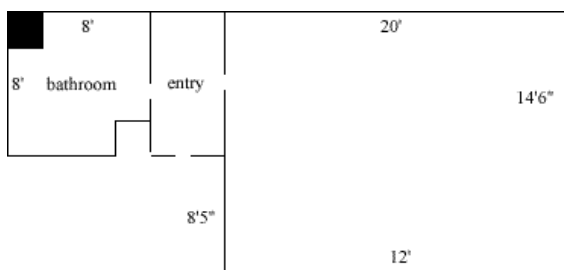
|                     |                   |
|---------------------|-------------------|
| Room occupancy      | 2                 |
| Ceiling height      | 7'10"             |
| # of outlets        | 6                 |
| Bathroom facilities | private           |
| Built in furniture  | none              |
| Medicine cabinet    | no                |
| Closet size         | 2'(d) x 2'10"(w)  |
| Window size         | 5'3"(h) x 3'3"(w) |
| Air-conditioning    | No                |

## Spotswood 101



|                     |                   |
|---------------------|-------------------|
| Room occupancy      | 2                 |
| Ceiling height      | 7'10"             |
| # of outlets        | 4                 |
| Sink                | no                |
| Bathroom facilities | private           |
| Built in furniture  | none              |
| Medicine cabinet    | no                |
| Wardrobe size       | 2'(d) x 2'4"(w)   |
| Window size         | 5'3"(h) x 3'3"(w) |
| Air-conditioning    | No                |

## Spotswood 102

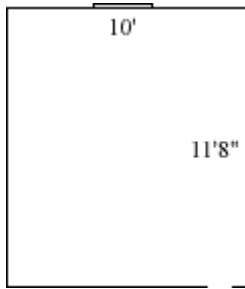


|                     |                   |
|---------------------|-------------------|
| Room occupancy      | 2                 |
| Ceiling height      | 7'10"             |
| # of outlets        | 5                 |
| Sink                | no                |
| Bathroom facilities | private           |
| Built in furniture  | none              |
| Medicine cabinet    | no                |
| Wardrobe size       | 2'(d) x 2'10"(w)  |
| Window size         | 5'3"(h) x 3'3"(w) |
| Air-conditioning    | No                |

Floor plans are provided to demonstrate differences between room types. Individual rooms vary. All dimensions and square footage are approximate and should not be relied upon as representation, express or implied, of your actual assigned room.

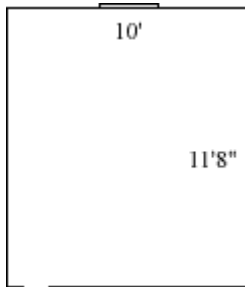
# Spotswood Hall First-Floor Rooms

## Spotswood 109



|                     |                   |
|---------------------|-------------------|
| Room occupancy      | 1                 |
| Ceiling height      | 7'10"             |
| # of outlets        | 3                 |
| Sink                | no                |
| Bathroom facilities | hall              |
| Built in furniture  | none              |
| Medicine cabinet    | no                |
| Closet size         | 2'(d) x 3'6"(w)   |
| Window size         | 5'3"(h) x 3'3"(w) |
| Air-conditioning    | No                |

## Spotswood 110



|                     |                   |
|---------------------|-------------------|
| Room occupancy      | 1                 |
| Ceiling height      | 7'10"             |
| # of outlets        | 3                 |
| Sink                | no                |
| Bathroom facilities | hall              |
| Built in furniture  | none              |
| Medicine cabinet    | no                |
| Closet size         | 2'(d) x 3'6"(w)   |
| Window size         | 5'3"(h) x 3'3"(w) |
| Air-conditioning    | No                |

Floor plans are provided to demonstrate differences between room types. Individual rooms vary. All dimensions and square footage are approximate and should not be relied upon as representation, express or implied, of your actual assigned room.