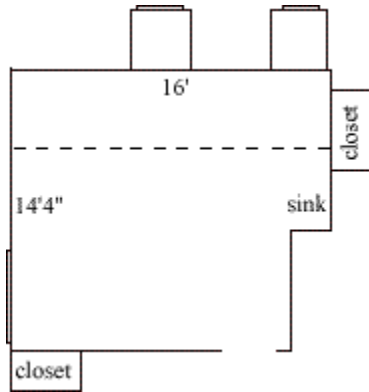


Hunt Hall Third-Floor Rooms

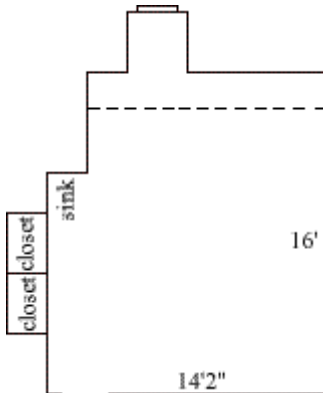
Hunt 300



Dotted line indicates sloped ceiling.

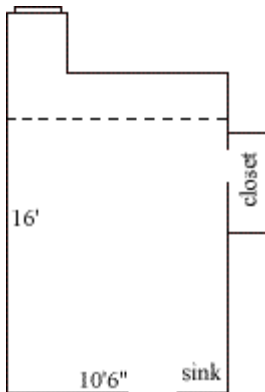
Room occupancy	2
Ceiling height	9'5"
# of outlets	5
Sink	yes
Bathroom Facilities	hall
Built-in furniture	no
Medicine Cabinet	yes
Closet size	4'4"(d) x 2'3"(w) 3'9" (d) x 2'9" (w)
Window size	4' 3" (h) x 2'6"(w) 4'6" (h) x 2'4"(w)
Air-conditioned	yes

Hunt 302



Room occupancy	2
Ceiling height	9'5"
# of outlets	5
Sink	yes
Bathroom Facilities	hall
Built-in furniture	no
Medicine Cabinet	yes
Closet size	2'11"(d) x 2'5"(w)
Window size	4'6" (h) x 2'3"(w)
Air-conditioned	yes

Hunt 304



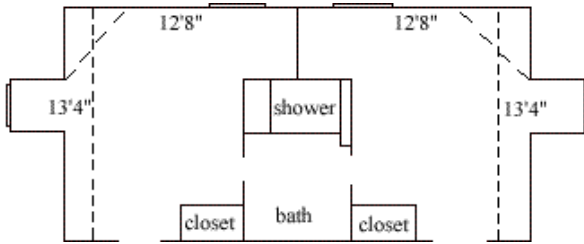
Dotted line indicates sloped ceiling.

Room occupancy	1
Ceiling height	9'5"
# of outlets	10
Sink	yes
Bathroom Facilities	hall
Built-in furniture	no
Medicine Cabinet	yes
Closet size	1'6"(d) x 5'(w) 1 wardrobe
Window size	4'7" (h) x 2'3"(w)
Air-conditioned	yes

Floor plans are provided to demonstrate differences between room types. Individual rooms vary. All dimensions and square footage are approximate and should not be relied upon as representation, express or implied, of your actual assigned room.

Hunt Hall Third-Floor Rooms

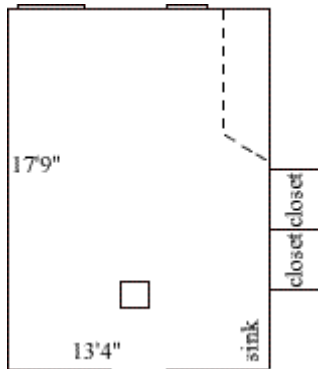
Hunt Suite 305/307



Dotted line indicates sloped ceiling.

Room occupancy	1
Ceiling height	9'5"
# of outlets	5 (305) 4 (307)
Sink	no
Bathroom Facilities	suite
Built-in furniture	no
Medicine Cabinet	no
Closet size	2'1"(d) x 3'1"(w) 3'9" (d) x 2'9" (w)
Window size	4'7"(h) x 2'3"(w)
Air-conditioned	yes

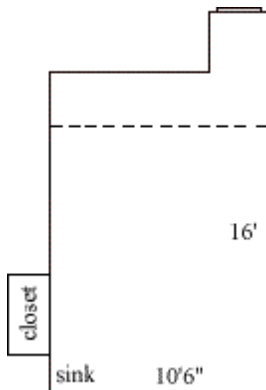
Hunt 306



Dotted line indicates sloped ceiling.

Room occupancy	1
Ceiling height	9'5"
# of outlets	6
Sink	yes
Bathroom Facilities	hall
Built-in furniture	no
Medicine Cabinet	no
Closet size	2'10"(d) x 2'2"(w) 1 wardrobe
Window size	4' 9" (h) x 3'5"(w) 4' 9" (h) x 2'4"(w)
Air-conditioned	yes

Hunt 308



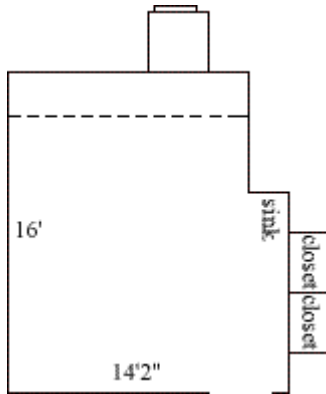
Dotted line indicates sloped ceiling.

Room occupancy	2
Ceiling height	9'5"
# of outlets	4
Sink	yes
Bathroom Facilities	hall
Built-in furniture	no
Medicine Cabinet	yes
Closet size	1'6"(d) x 5'(w) 1 wardrobe
Window size	4'7" (h) x 2'3"(w)
Air-conditioned	yes

Floor plans are provided to demonstrate differences between room types. Individual rooms vary. All dimensions and square footage are approximate and should not be relied upon as representation, express or implied, of your actual assigned room.

Hunt Hall Third-Floor Rooms

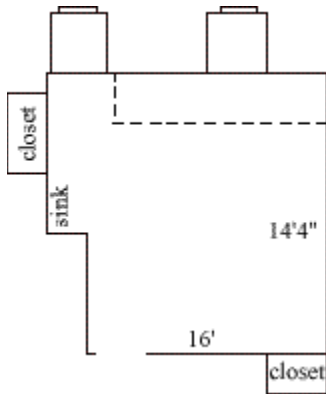
Hunt 310



Dotted line indicates sloped ceiling.

Room occupancy	2
Ceiling height	9'5"
# of outlets	6
Sink	yes
Bathroom Facilities	hall
Built-in furniture	no
Medicine Cabinet	yes
Closet size	2'11"(d) x 2'5"(w)
Window size	4'6" (h) x 2'3"(w)
Air-conditioned	yes

Hunt 312



Dotted line indicates sloped ceiling.

Room occupancy	2
Ceiling height	9'5"
# of outlets	6
Sink	yes
Bathroom Facilities	hall
Built-in furniture	no
Medicine Cabinet	yes
Closet size	4'4"(d) x 2'3"(w)
	3'9"(d) x 2'9"(w)
Window size	4'3"(h) x 2'6"(w)
	4'6"(h) x 2'4"(w)
Air-conditioned	yes

Floor plans are provided to demonstrate differences between room types. Individual rooms vary. All dimensions and square footage are approximate and should not be relied upon as representation, express or implied, of your actual assigned room.