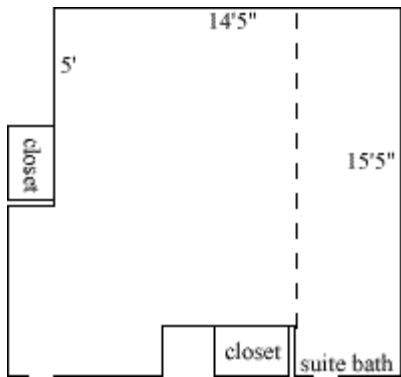


## Hardy Hall Fourth-Floor Rooms

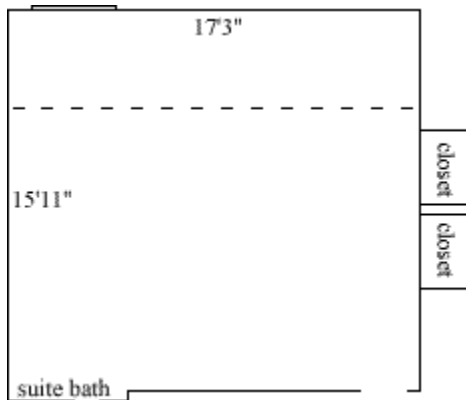
### Hardy 425



dashed line indicates sloped ceiling

Room occupancy	2
Ceiling height	9'
# of outlets	8
Sink	no
Bathroom Facilities	suite
Built-in furniture	no
Medicine Cabinet	no
Closet size	3'3" x 2'
Window size	3'7" x 4'3"
Air-conditioned	yes

### Hardy 426



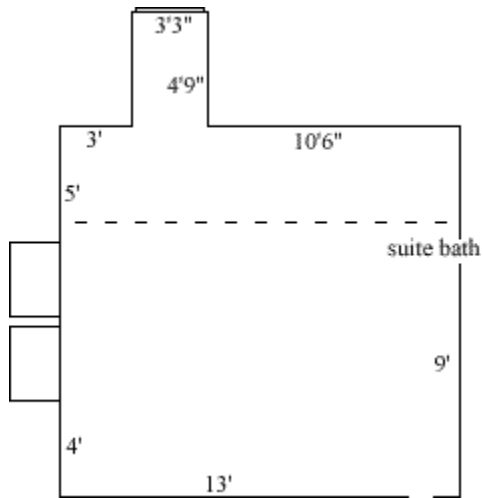
dashed line indicates sloped ceiling

Room occupancy	2
Ceiling height	9'
# of outlets	6
Sink	no
Bathroom Facilities	suite
Built-in furniture	no
Medicine Cabinet	no
Closet size	3'3" x 2'
Window size	3'7" x 4'2"
Air-conditioned	yes

Floor plans are provided to demonstrate differences between room types. Individual rooms vary. All dimensions and square footage are approximate and should not be relied upon as representation, express or implied, of your actual assigned room.

# Hardy Hall Fourth-Floor Rooms

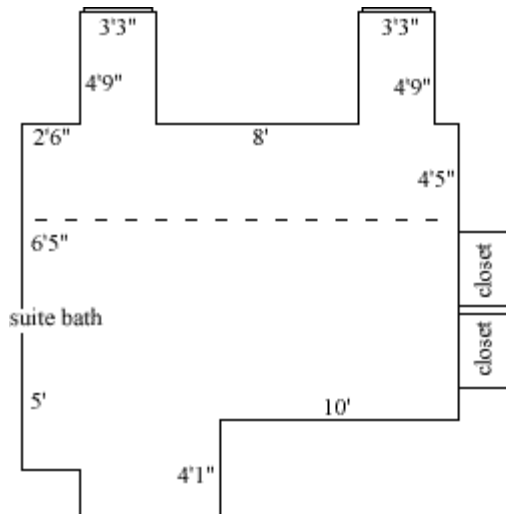
## Hardy 428



dashed line indicates sloped ceiling

Room occupancy	2
Ceiling height	9'
# of outlets	6
Sink	no
Bathroom Facilities	suite
Built-in furniture	no
Medicine Cabinet	no
Closet size	3'3" x 2'
Window size	3'7" x 5'2"
Air-conditioned	yes

## Hardy 429



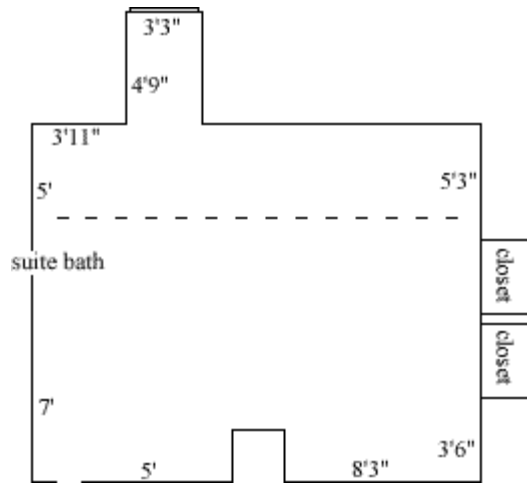
dashed line indicates sloped ceiling

Room occupancy	2
Ceiling height	9'
# of outlets	8
Sink	no
Bathroom Facilities	suite
Built-in furniture	no
Medicine Cabinet	no
Closet size	3'3" x 2'
Window size	3'3" x 5'2"
Air-conditioned	yes

Floor plans are provided to demonstrate differences between room types. Individual rooms vary. All dimensions and square footage are approximate and should not be relied upon as representation, express or implied, of your actual assigned room.

# Hardy Hall Fourth-Floor Rooms

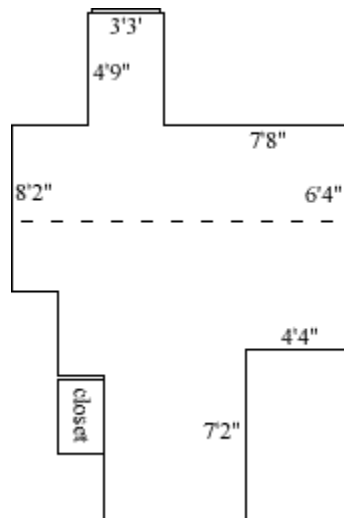
## Hardy 430



dashed line indicates sloped ceiling

Room occupancy	2
Ceiling height	9'
# of outlets	7
Sink	no
Bathroom Facilities	suite
Built-in furniture	no
Medicine Cabinet	no
Closet size	3'3" x 2'
Window size	3'7" x 5'2"
Air-conditioned	yes

## Hardy 431



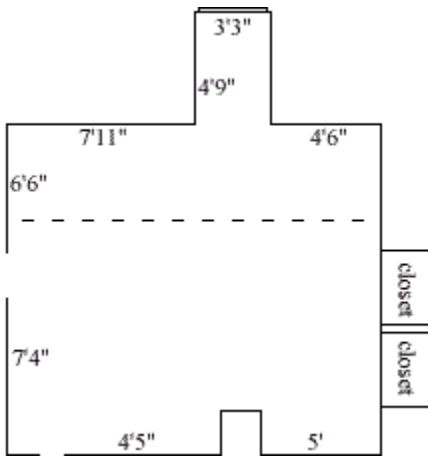
dashed line indicates sloped ceiling

Room occupancy	1
Ceiling height	9'
# of outlets	4
Sink	no
Bathroom Facilities	suite
Built-in furniture	no
Medicine Cabinet	no
Closet size	3'3" x 2'
Window size	3'3" x 5'2"
Air-conditioned	yes

Floor plans are provided to demonstrate differences between room types. Individual rooms vary. All dimensions and square footage are approximate and should not be relied upon as representation, express or implied, of your actual assigned room.

## Hardy Hall Fourth-Floor Rooms

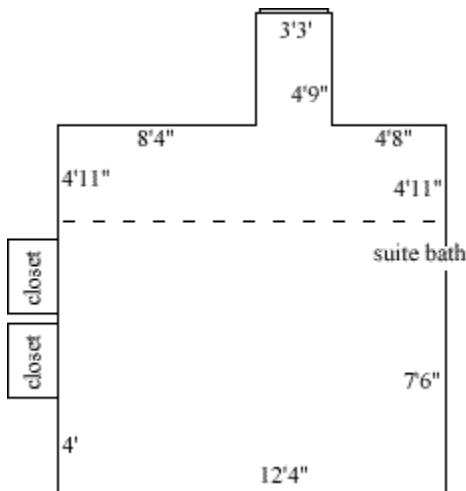
### Hardy 433



dashed line indicates sloped ceiling

Room occupancy	2
Ceiling height	9'
# of outlets	9
Sink	no
Bathroom Facilities	private
Built-in furniture	no
Medicine Cabinet	no
Closet size	3'3" x 2'
Window size	3'3" x 5'2"
Air-conditioned	yes

### Hardy 434



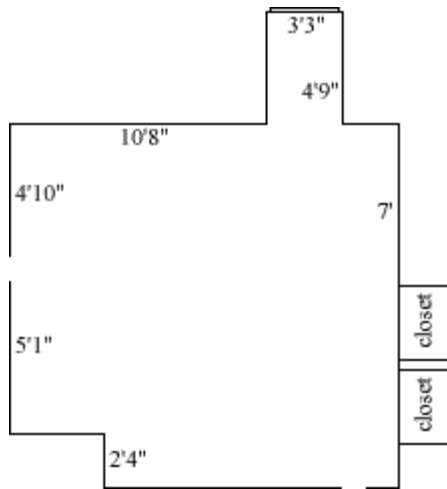
dashed line indicates sloped ceiling

Room occupancy	2
Ceiling height	9'
# of outlets	7
Sink	no
Bathroom Facilities	suite
Built-in furniture	no
Medicine Cabinet	no
Closet size	3'3" x 2'
Window size	3'3" x 5'2"
Air-conditioned	yes

Floor plans are provided to demonstrate differences between room types. Individual rooms vary. All dimensions and square footage are approximate and should not be relied upon as representation, express or implied, of your actual assigned room.

# Hardy Hall Fourth-Floor Rooms

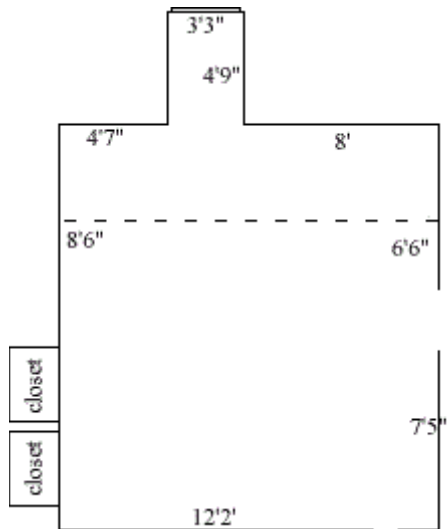
## Hardy 436



dashed line indicates sloped ceiling

Room occupancy	2
Ceiling height	9'
# of outlets	6
Sink	no
Bathroom Facilities	suite
Built-in furniture	no
Medicine Cabinet	no
Closet size	3'3" x 2'
Window size	3'3" x 5'2"
Air-conditioned	yes

## Hardy 439



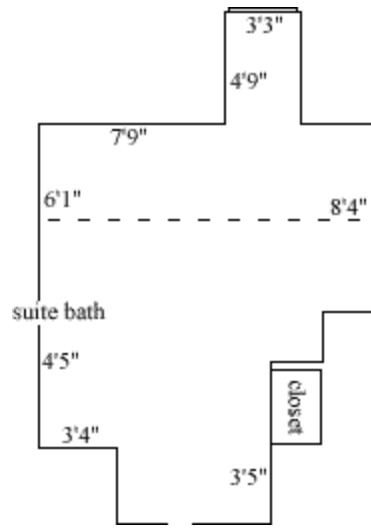
dashed line indicates sloped ceiling

Room occupancy	2
Ceiling height	9'
# of outlets	8
Sink	no
Bathroom Facilities	private
Built-in furniture	no
Medicine Cabinet	no
Closet size	3'3" x 2'
Window size	3'3" x 5'2"
Air-conditioned	yes

Floor plans are provided to demonstrate differences between room types. Individual rooms vary. All dimensions and square footage are approximate and should not be relied upon as representation, express or implied, of your actual assigned room.

# Hardy Hall Fourth-Floor Rooms

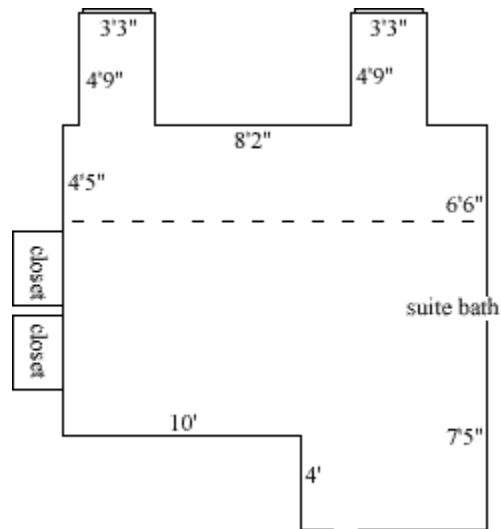
## Hardy 441



dashed line indicates sloped ceiling

Room occupancy	1
Ceiling height	9'
# of outlets	6
Sink	no
Bathroom Facilities	suite
Built-in furniture	no
Medicine Cabinet	no
Closet size	3'3" x 2'
Window size	3'3" x 5'2"
Air-conditioned	yes

## Hardy 443



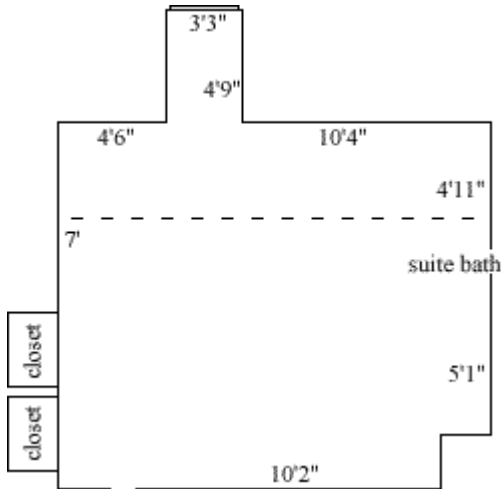
dashed line indicates sloped ceiling

Room occupancy	2
Ceiling height	9'
# of outlets	8
Sink	no
Bathroom Facilities	suite
Built-in furniture	no
Medicine Cabinet	no
Closet size	3'3" x 2'
Window size	3'3" x 5'2"
Air-conditioned	yes

Floor plans are provided to demonstrate differences between room types. Individual rooms vary. All dimensions and square footage are approximate and should not be relied upon as representation, express or implied, of your actual assigned room.

# Hardy Hall Fourth-Floor Rooms

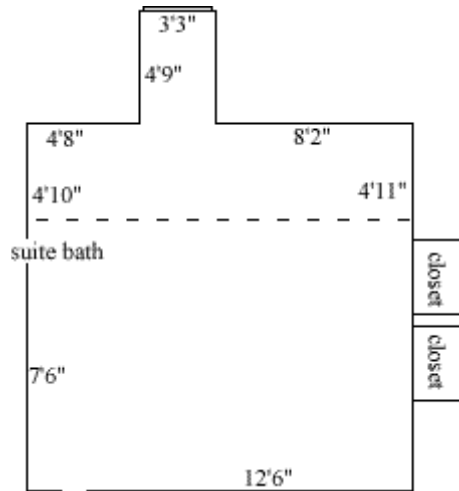
## Hardy 444



dashed line indicates sloped ceiling

Room occupancy	2
Ceiling height	9'
# of outlets	7
Sink	no
Bathroom Facilities	suite
Built-in furniture	no
Medicine Cabinet	no
Closet size	3'3" x 2'
Window size	3'3" x 5'2"
Air-conditioned	yes

## Hardy 446



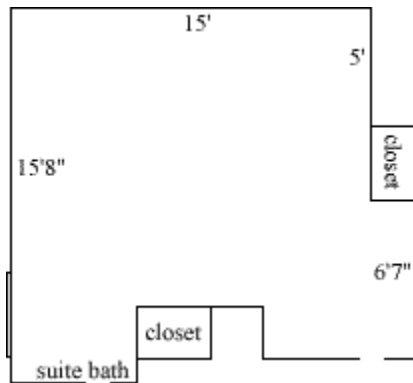
dashed line indicates sloped ceiling

Room occupancy	2
Ceiling height	9'
# of outlets	6
Sink	no
Bathroom Facilities	suite
Built-in furniture	no
Medicine Cabinet	no
Closet size	3'3" x 2'
Window size	3'3" x 5'2"
Air-conditioned	yes

Floor plans are provided to demonstrate differences between room types. Individual rooms vary. All dimensions and square footage are approximate and should not be relied upon as representation, express or implied, of your actual assigned room.

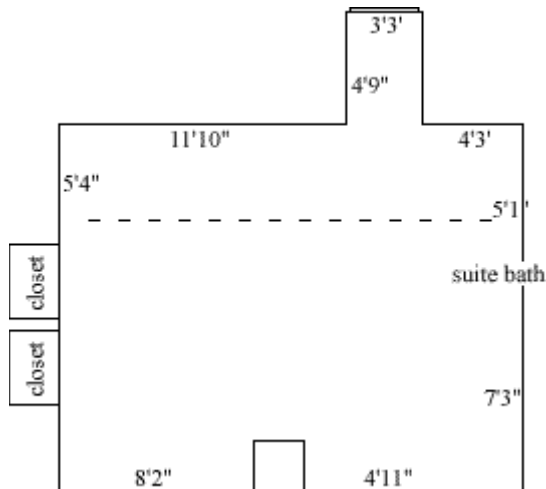
## Hardy Hall Fourth-Floor Rooms

### Hardy 447



Room occupancy	2
Ceiling height	9'
# of outlets	6
Sink	no
Bathroom Facilities	suite
Built-in furniture	no
Medicine Cabinet	no
Closet size	3'3" x 2'
Window size	3'3" x 5'2"
Air-conditioned	yes

### Hardy 450



dashed line indicates sloped ceiling

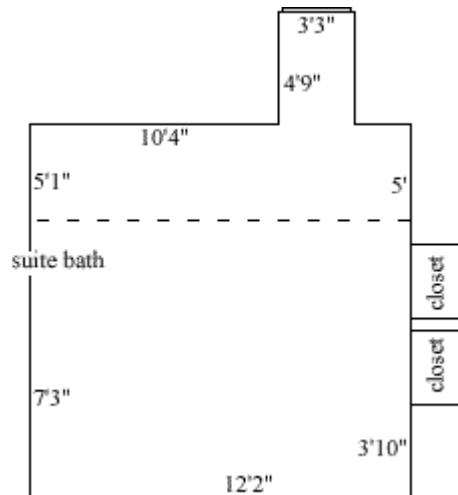
Room occupancy	2
Ceiling height	9'
# of outlets	7
Sink	no
Bathroom Facilities	suite
Built-in furniture	no
Medicine Cabinet	no
Closet size	3'3" x 2'
Window size	3'3" x 5'2"
Air-conditioned	yes

Floor plans are provided to demonstrate differences between room types. Individual rooms vary. All dimensions and square footage are approximate and should not be relied upon as representation, express or implied, of your actual assigned room.



# Hardy Hall Fourth-Floor Rooms

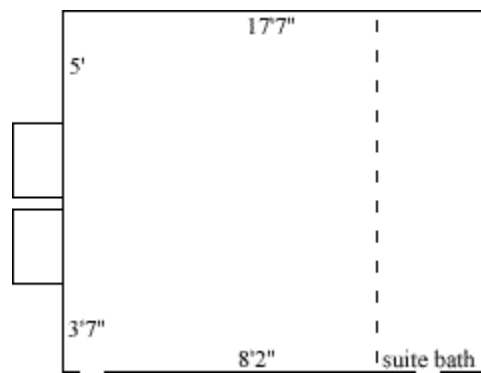
## Hardy 452



dashed line indicates sloped ceiling

Room occupancy	2
Ceiling height	9'
# of outlets	6
Sink	no
Bathroom Facilities	suite
Built-in furniture	no
Medicine Cabinet	no
Closet size	3'3" x 2'
Window size	3'3" x 5'2"
Air-conditioned	yes

## Hardy 454



dashed line indicates sloped ceiling

Room occupancy	2
Ceiling height	9'
# of outlets	6
Sink	no
Bathroom Facilities	suite
Built-in furniture	no
Medicine Cabinet	no
Closet size	3'3" x 2'
Window size	3'3" x 5'2"
Air-conditioned	yes

Floor plans are provided to demonstrate differences between room types. Individual rooms vary. All dimensions and square footage are approximate and should not be relied upon as representation, express or implied, of your actual assigned room.