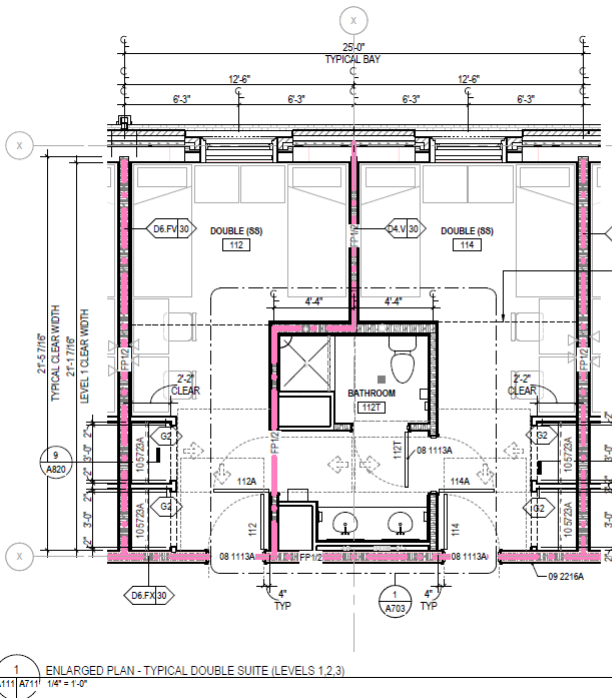


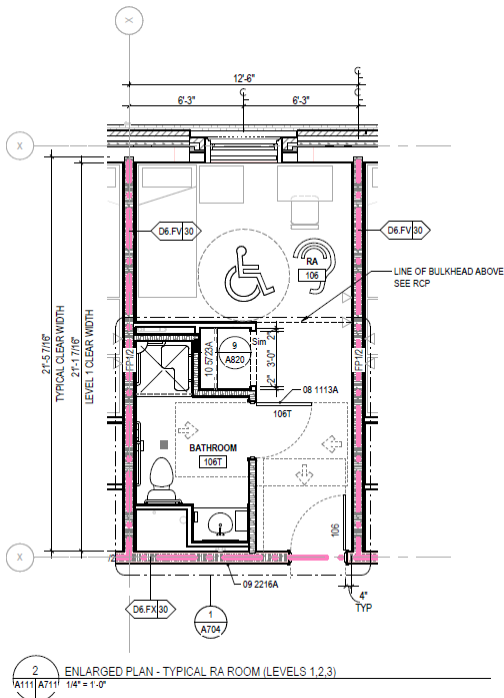
# Cedar Hall Third Floor Rooms

**Cedar 301/303, 302/304, 307/309, 308/310, 311/313, 312/314, 315/317, 316/318, 320/322, 324/326, 334/336, 338/340, 341/343, 342/344, 345/347, 346/348, 349/351, 350/352, 355/357, 356/358 - Typical Double Suite**



Room occupancy	2 occupants per Bedroom/ 4 occupants per suite
Bathroom Facilities	Suite
Built in furniture	none
Air conditioned	yes

## Cedar 306 & 354 - Typical RA Room

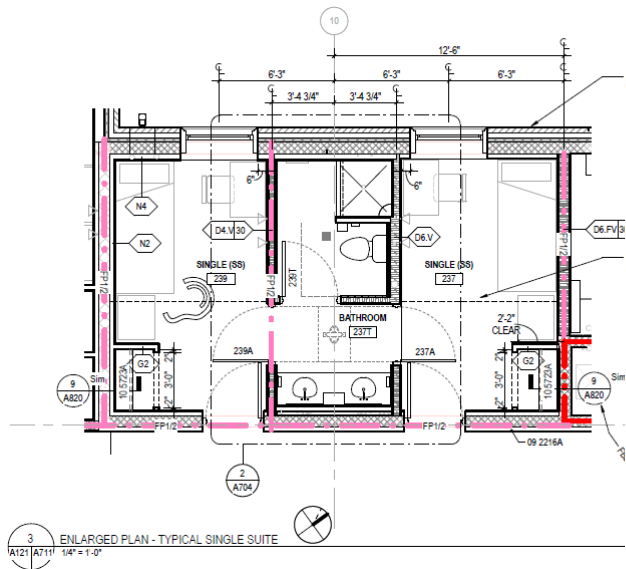


Room occupancy	1 occupant
Bathroom Facilities	Private
Built in furniture	none
Air conditioned	yes

Floor plans are provided to demonstrate differences between room types. Individual rooms vary. All dimensions and square footage are approximate and should not be relied upon as representation, express or implied, of your actual assigned room.

# Cedar Hall Third Floor Rooms

## Cedar 337/339 - Typical Single Suite



Room occupancy	1 occupant per bedroom/ 2 occupants per suite
Bathroom Facilities	Suite
Built in furniture	none
Air conditioned	yes

Floor plans are provided to demonstrate differences between room types. Individual rooms vary. All dimensions and square footage are approximate and should not be relied upon as representation, express or implied, of your actual assigned room.