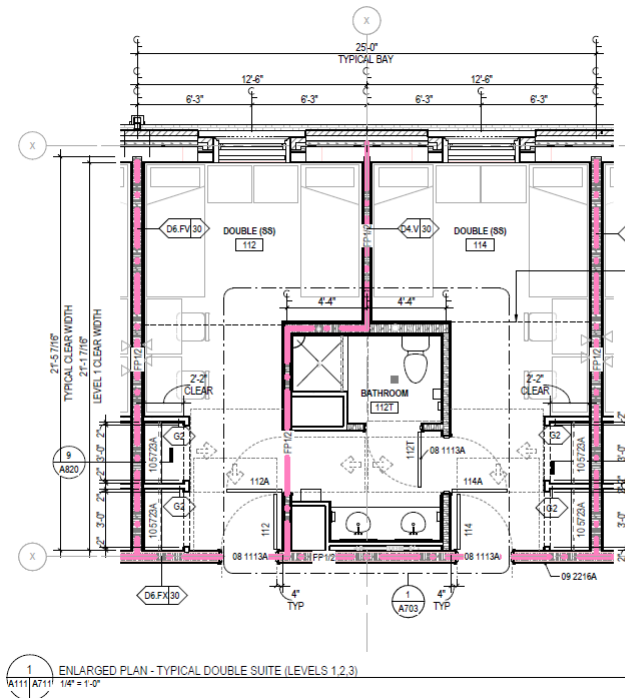


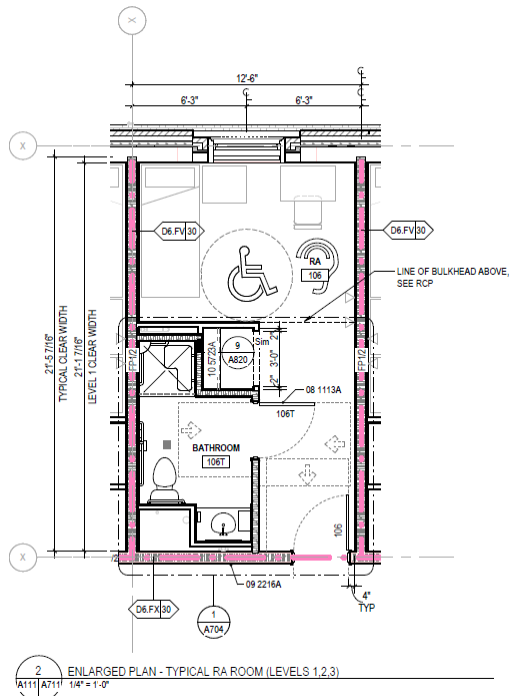
Cedar Hall Second Floor Rooms

Cedar 201/203, 202/204, 207/209, 208/210, 211/213, 212/214, 215/217, 216/218, 220/222, 224/226, 234/236, 238/240, 241/243, 242/244, 245/247, 246/248, 249/251, 250/252, 255/257, 256/258 - Typical Double Suite



Room occupancy	2 occupants per Bedroom/ 4 occupants per suite
Bathroom Facilities	Suite
Built in furniture	none
Air conditioned	yes

Cedar 206 & 254 - Typical RA Room



Room occupancy	1 occupant
Bathroom Facilities	Private
Built in furniture	none
Air conditioned	yes

Floor plans are provided to demonstrate differences between room types. Individual rooms vary. All dimensions and square footage are approximate and should not be relied upon as representation, express or implied, of your actual assigned room.

