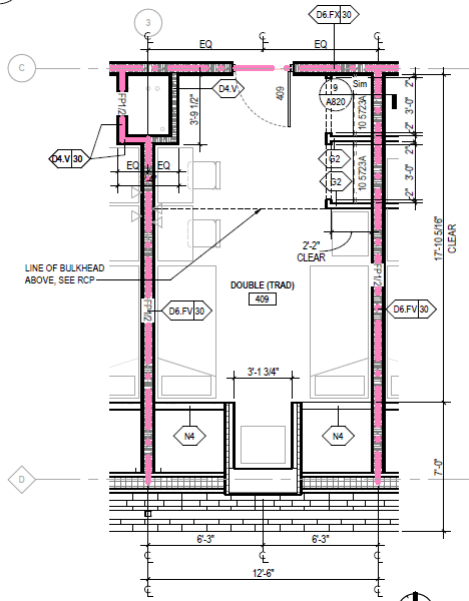


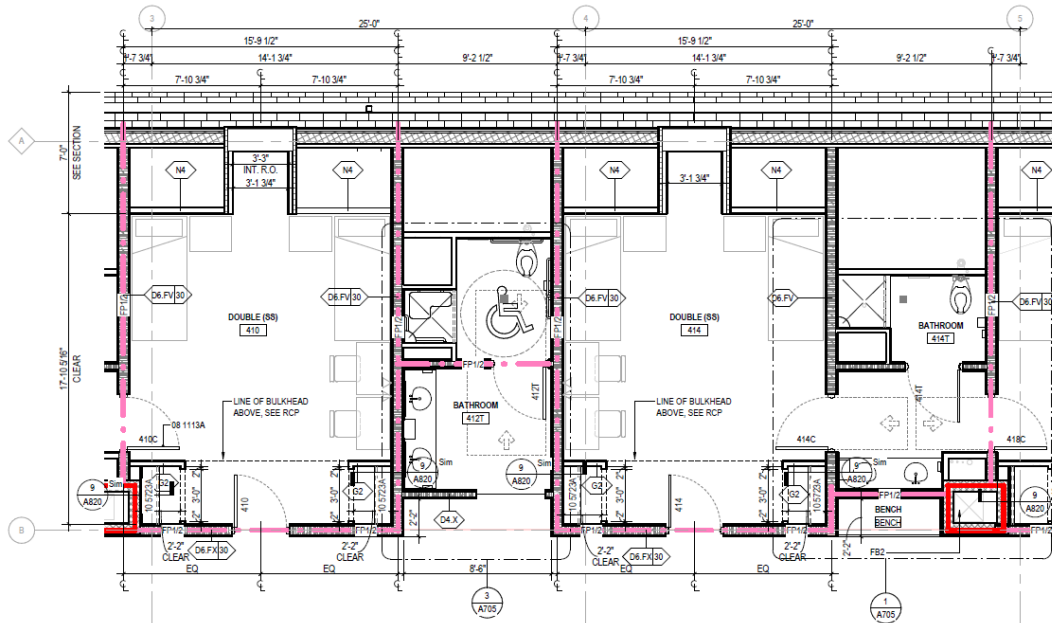
Cedar Hall Fourth Floor Rooms

Cedar 401, 402, 403, 407, 409, 411, 413, 415, 417, 441, 443, 445, 447, 449, 451, 455, 457, 458 – Typical Traditional Double



Room occupancy	2 occupants
Bathroom Facilities	Hall Single User Bathrooms
Built in furniture	none
Air conditioned	yes

Cedar 406/410, 414/418, 422/426, 434/436, 422/446, 450/454 - Typical Double Suite



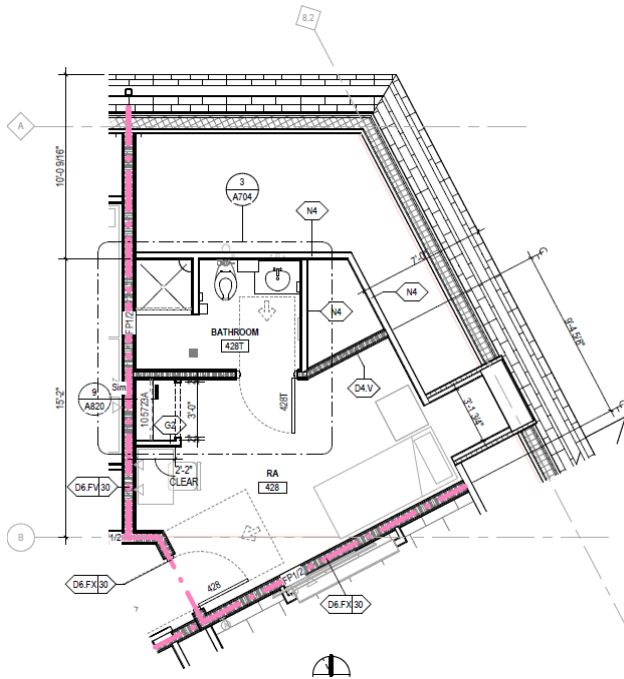
Room occupancy	2 occupants per bedroom/4 occupants per suite
Bathroom Facilities	Suite
Built in furniture	none
Air conditioned	yes

Note: The image above provided by the architects shows dimensions for a bedroom of the suite on the left section of the image, the hall entry single user bathroom on the middle-left, a bedroom of the suite on the middle-right, and the adjoining suite bathroom for both bedrooms on the right of the image.

Floor plans are provided to demonstrate differences between room types. Individual rooms vary. All dimensions and square footage are approximate and should not be relied upon as representation, express or implied, of your actual assigned room.

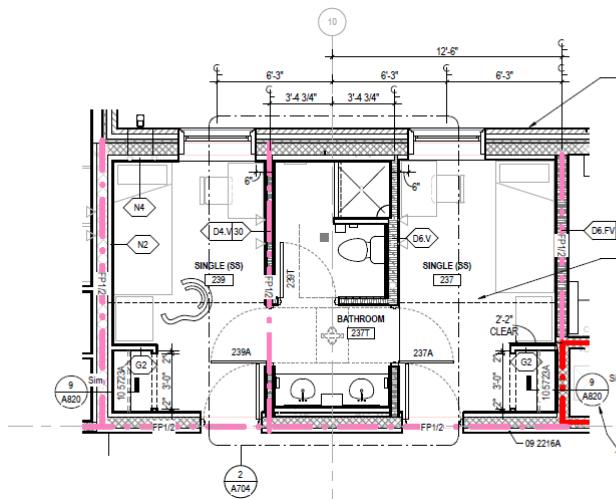
Cedar Hall Fourth Floor Rooms

Cedar 428 & 432 – Typical RA Room



Room occupancy	1 occupant
Bathroom Facilities	Private
Built in furniture	none
Air conditioned	yes

Cedar 437/439 - Typical Single Suite



Room occupancy	1 occupant per bedroom/ 2 occupants per suite
Bathroom Facilities	Suite
Built in furniture	none
Air conditioned	yes

Floor plans are provided to demonstrate differences between room types. Individual rooms vary. All dimensions and square footage are approximate and should not be relied upon as representation, express or implied, of your actual assigned room.