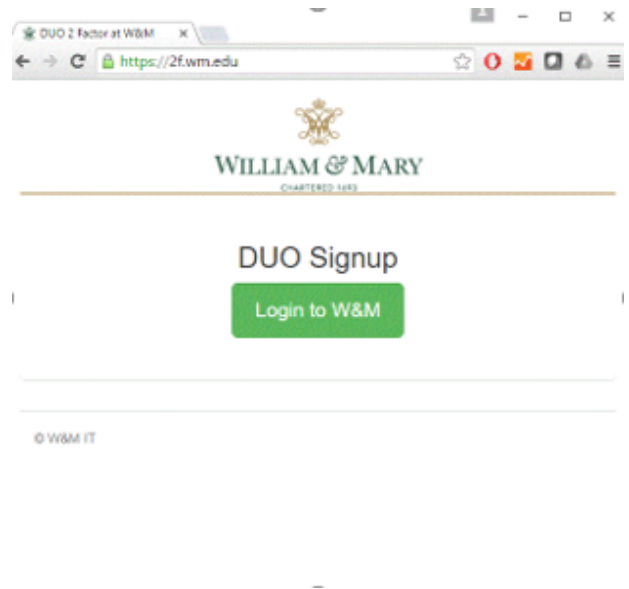


## VPN Connection for PC

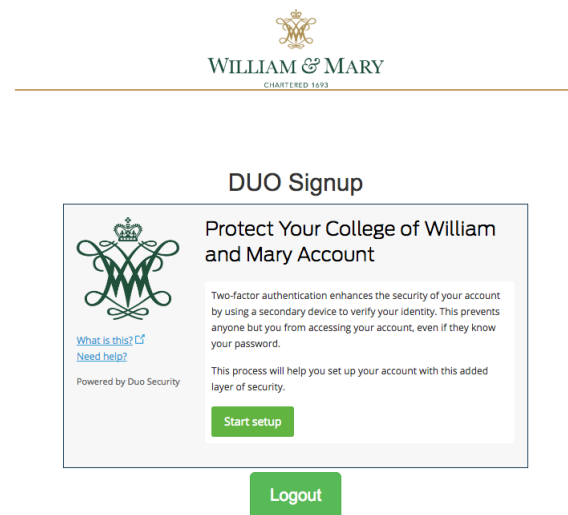
### Sign up for a two factor DUO account on William & Mary's website

If you are currently located in China, the following process will allow you to access the W&M VPN using two factor authentication.

- Connect to the website <https://2f.wm.edu/> and click *Login to W&M*. Login with your campus account.



- Click *Start setup*.



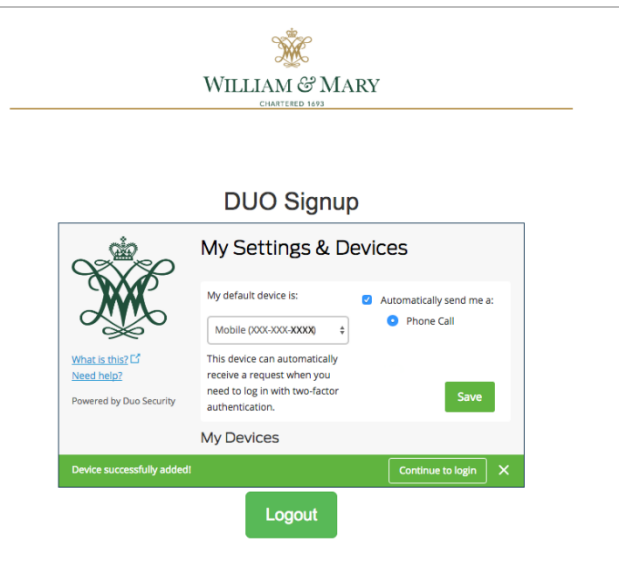
- Select the *Mobile phone* option and then click *continue*.

- Select Country
- Enter your *telephone number* and click *Continue*.

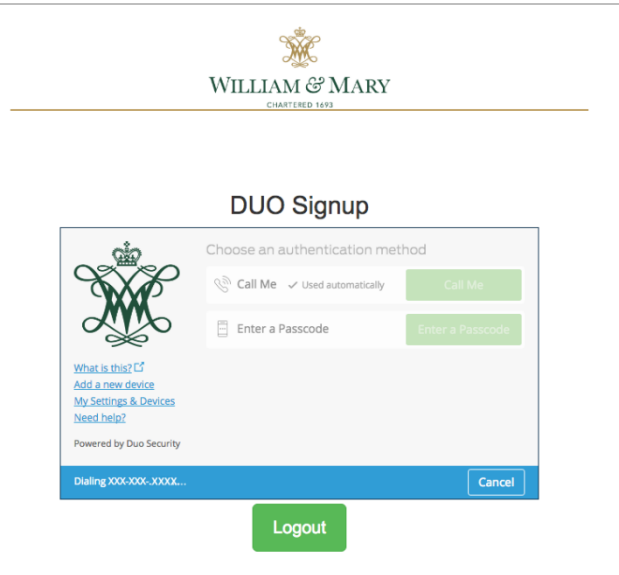
### Two-factor authentication via a telephone call

- The following screen will allow you to select the type of telephone that is being used. Please keep in mind that if you are outside the US, it is best to select the ***Other*** option. This will allow you to authenticate without installing the app on your mobile device.

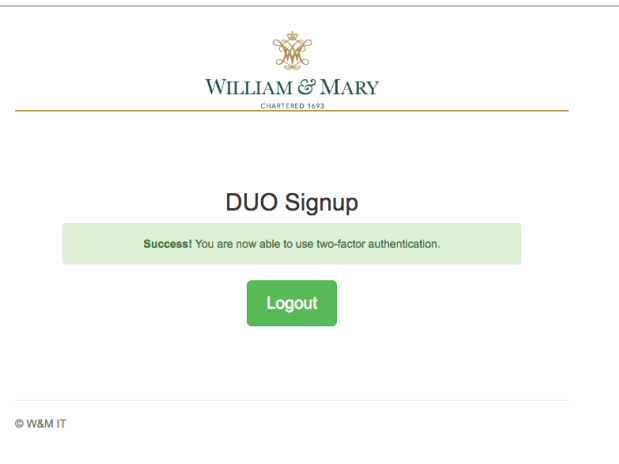
- Check the option “Automatically send me a: Phone Call”.
- Click *Save*.
- Click *Continue to login*.



- Your telephone will ring within a couple of seconds.
- Answer the telephone call and follow the instructions (press any key to verify that you initiated the call).

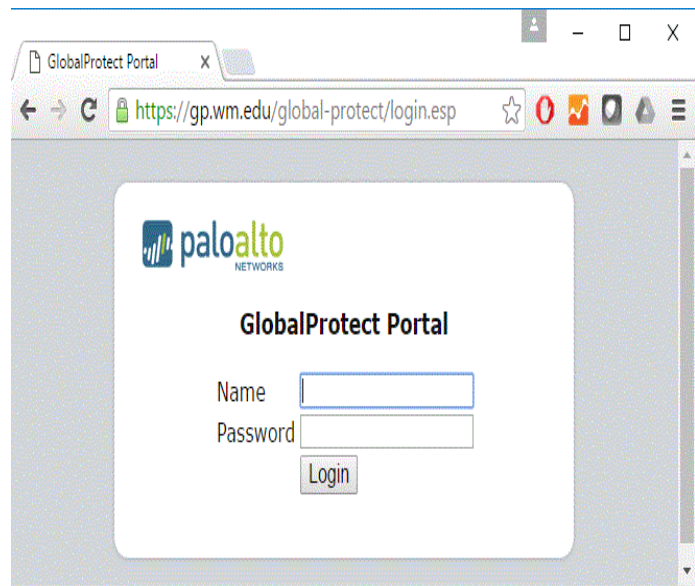


- Your DUO account is now signed up to use two-factor authentication by receiving a telephone call.
- *Logout*.

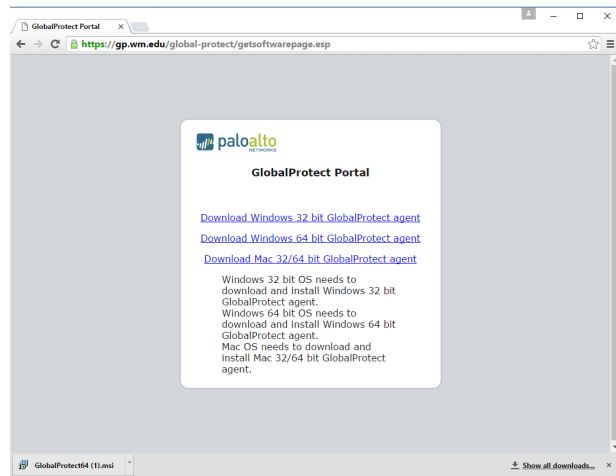


## Download and install the GlobalProtect VPN software from the website

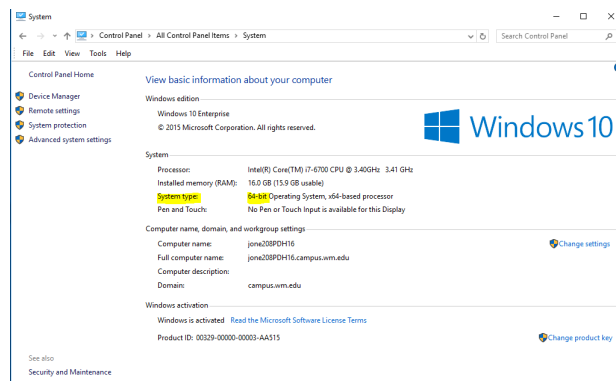
- In the web browser go to <https://gp.wm.edu>
- Login with your *W&M campus username and password*.



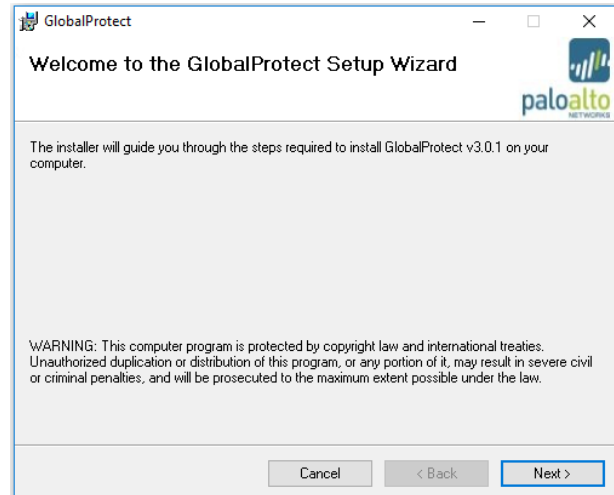
- Based on your operating system (Windows or Mac), download the correct software and run the installer.



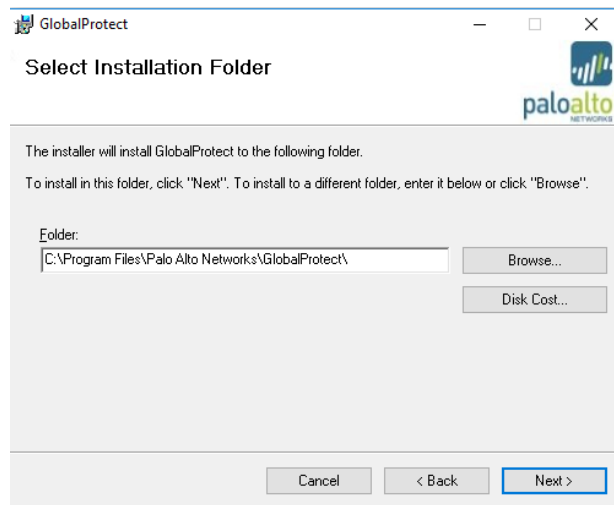
- To determine if your operating system is a *32 bit*, or *64 bit* operating system, click on the *Windows Start* button located in the bottom left corner of the desktop.
- Select *Control Panel*.
- Select *System*.
- You may also choose to use the *Search* option located in the *Start Menu*. In the *Search* field enter *System* and it will open the *System Information* window.



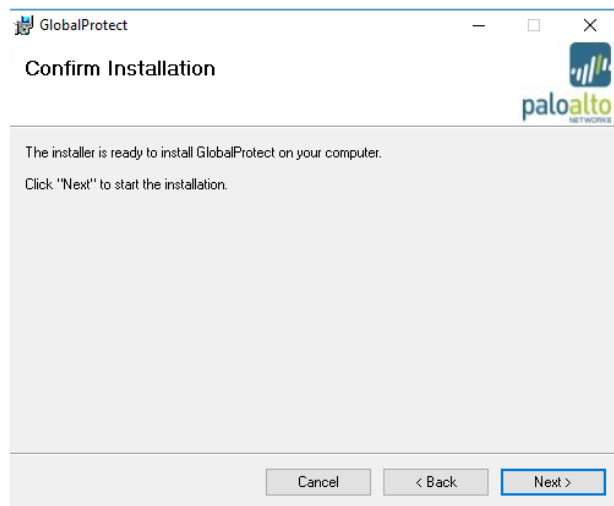
- Follow through the installation selecting the default options.
- Click *Next*.



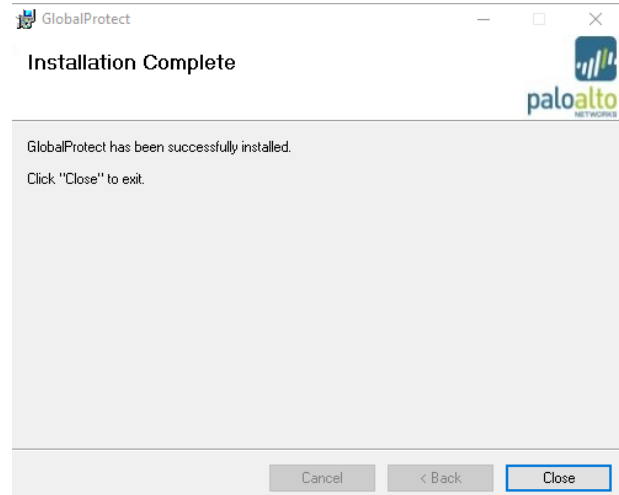
- Click *Next*.



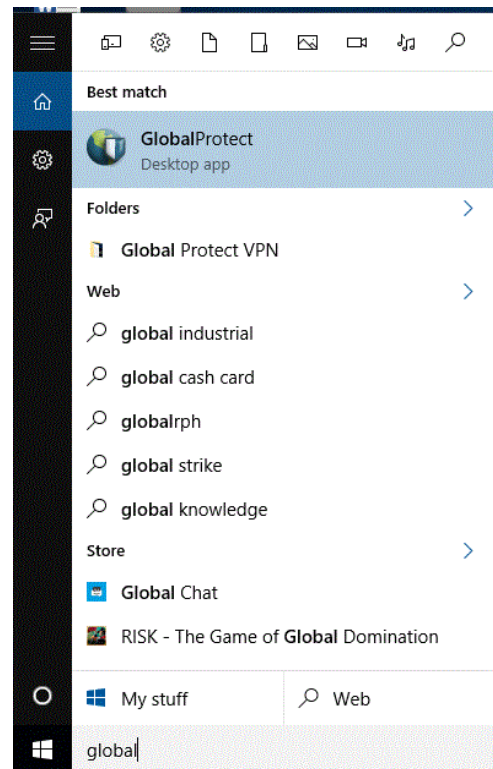
- Click *Next*.
- A screen will flash while the program is installing.



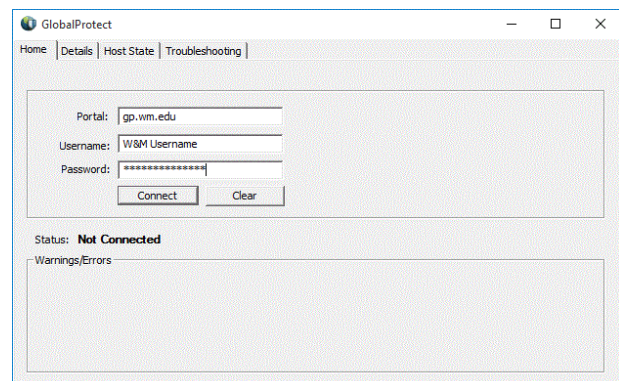
- The software has been installed. *Close* the window.



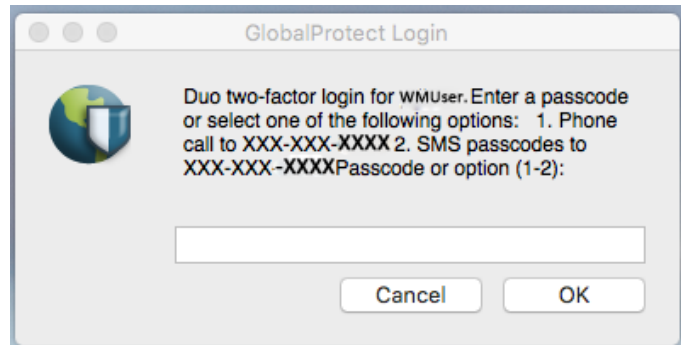
- Start the software by opening the *Windows button* and then selecting *All apps*.
- Double click on *GlobalProtect*.



- Enter the following information as shown on the right and then click connect.
- Portal: *gp.wm.edu*  
Username: *W&M username*  
Password: *W&M campus password*



- The *GlobalProtect Login* will appear on your screen.
- Select *Option 1 Phone call to xxx-xxx-xxxx*.
- You will receive a telephone call within a few seconds.
- Press any key to verify that you initiated the call.



- Once you hang up the telephone call, the globe that is located on the bottom right of the screen will spin and a blue shield will appear.
- You should now be able to access W&M resources, Youtube and Gmail.

