

How to access VDI via Duo Two-Factor via the VMware Horizon Client

Note: If you are on campus you will not need to use Duo to connect to VDI.

Navigate to Vdesktop.wm.edu

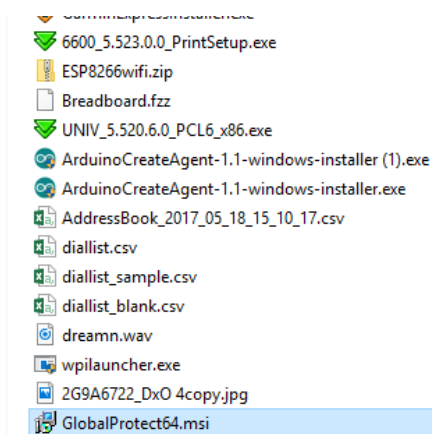
Open a web browser and navigate to vdesktop.wm.edu

Click **"Install VMware Horizon Client"**

The client will download



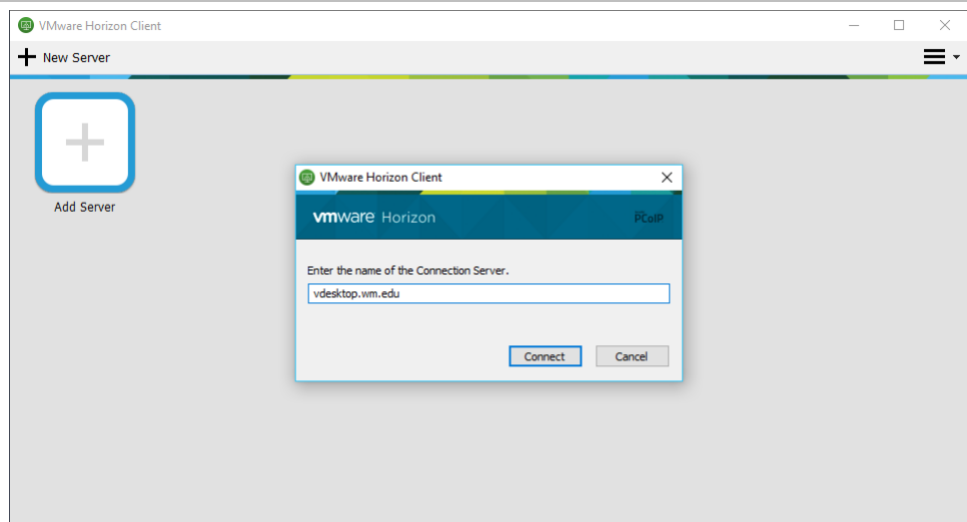
Open the downloaded VMware Horizon Client



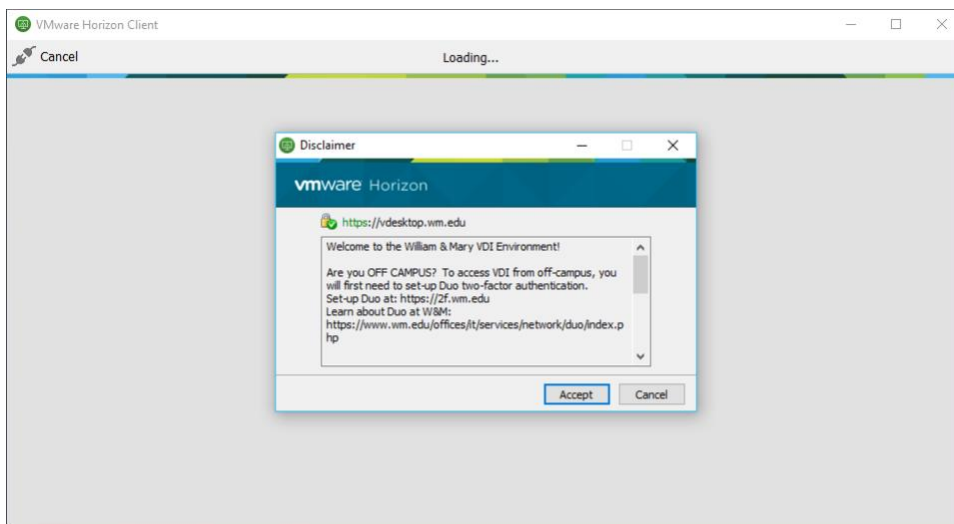
Click **"New Server"** located in the upper left corner

Enter **"vdesktop.wm.edu"**

Click Connect



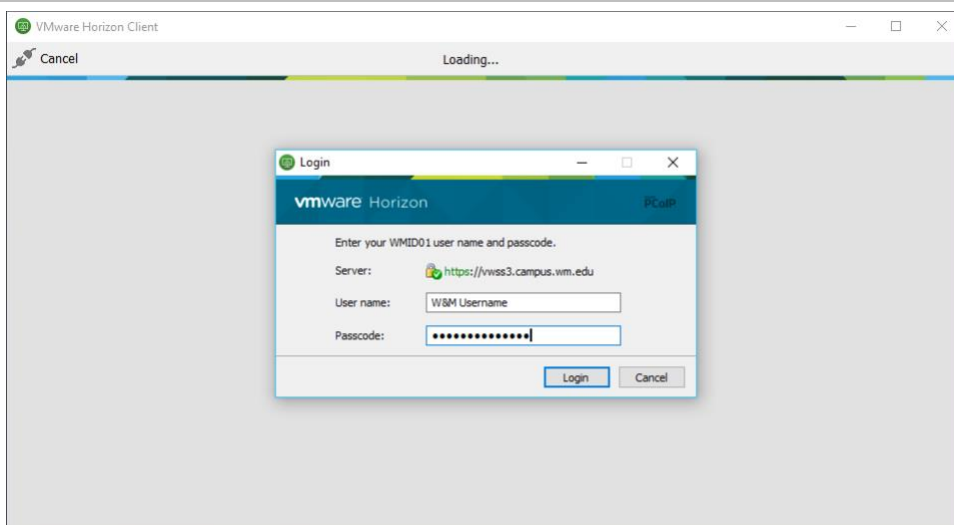
Click **Accept**



Enter WMusername and Password

Enter your W&M Username where it says **"Username"**

Enter your Campus Password where it says **"Passcode"**

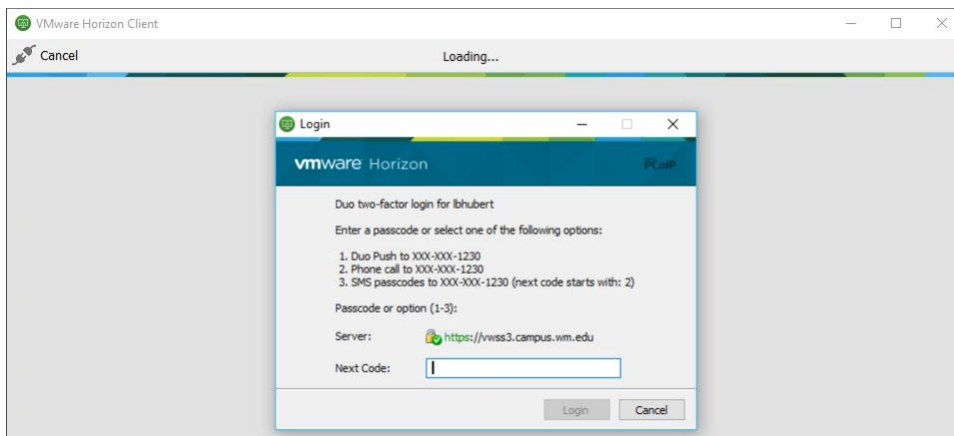


Enter the number for your next Duo Passcode or enter an authentication option (1-3)

Option 1, will send a Duo Push to a smartphone.

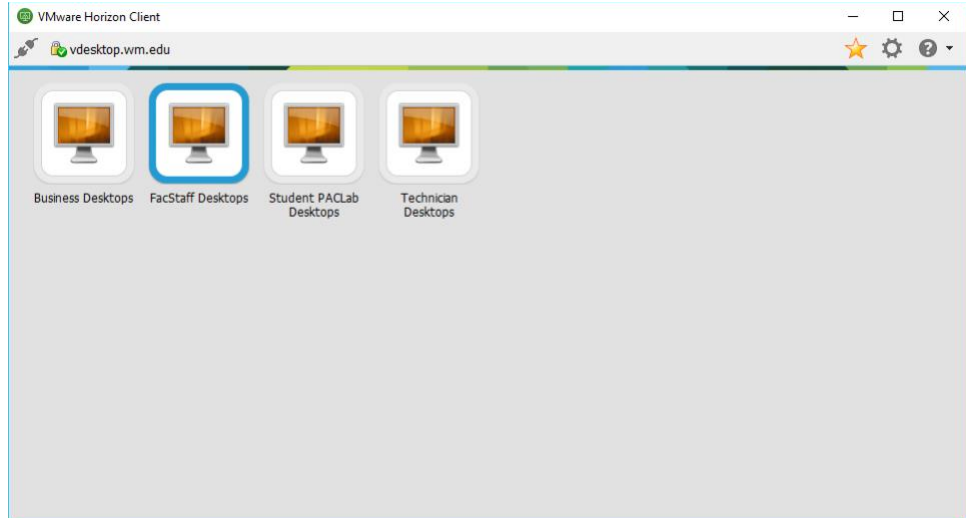
Option 2, will call an enrolled phone.

Option 3, will send a text message with to your smartphone

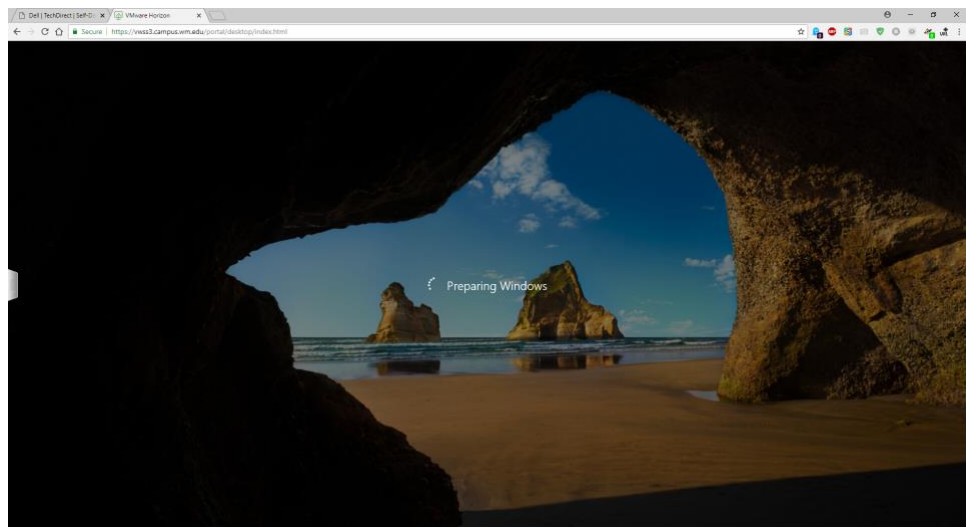


Select Desktop

Click on the Desktop (i.e. FacStaff Desktops) that you'd like to connect to.



You should now see the Desktop loading screen



* These instructions are for the initial setup. Begin subsequent logins by clicking on the "**vdesktop.wm.edu**" icon at step two.