

Applied Learning for All

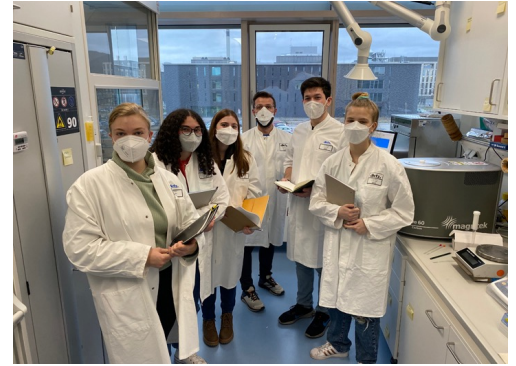


WILLIAM & MARY

CHARTERED 1693

Applied Learning for All

- Vision 2026 Career Cornerstone
- Access to impactful experiences



Institutional Impact

- Target population: all undergraduates
- Special focus: groups underrepresented in applied learning



Pilot Demonstrated Feasibility



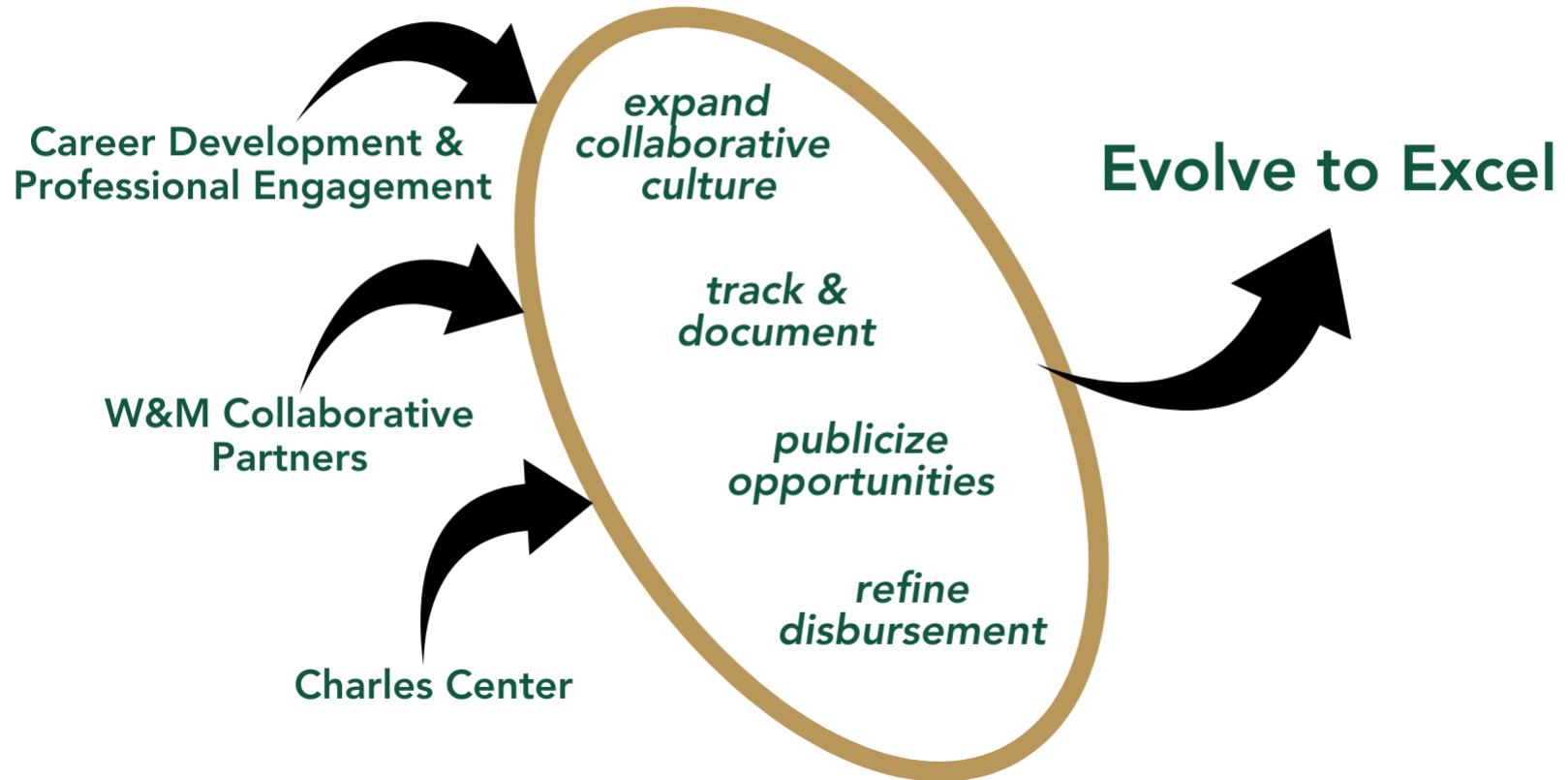
**Campus
Partners**

**Disbursement
Procedure**

**Innovative
Syllabi**

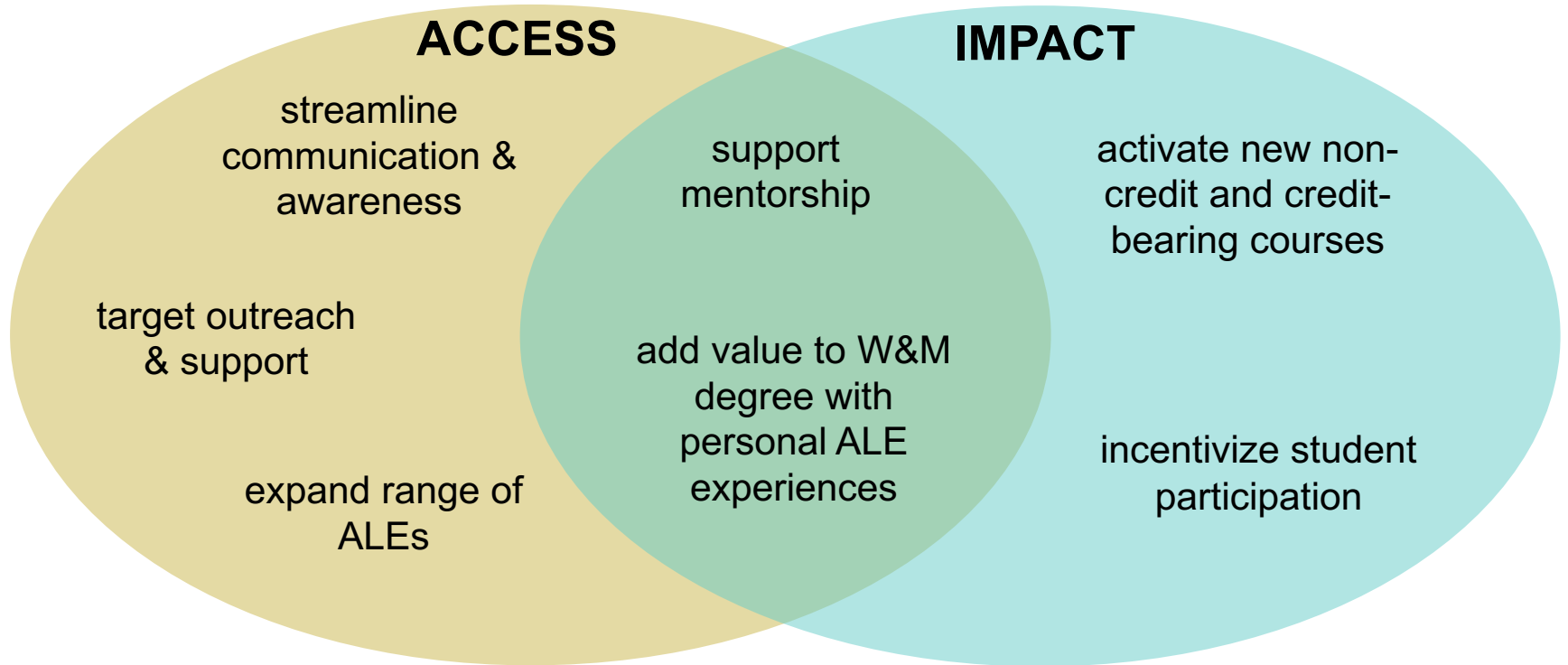
**0 & 3 Credit
Courses**

Goal 1: Create inclusive infrastructure

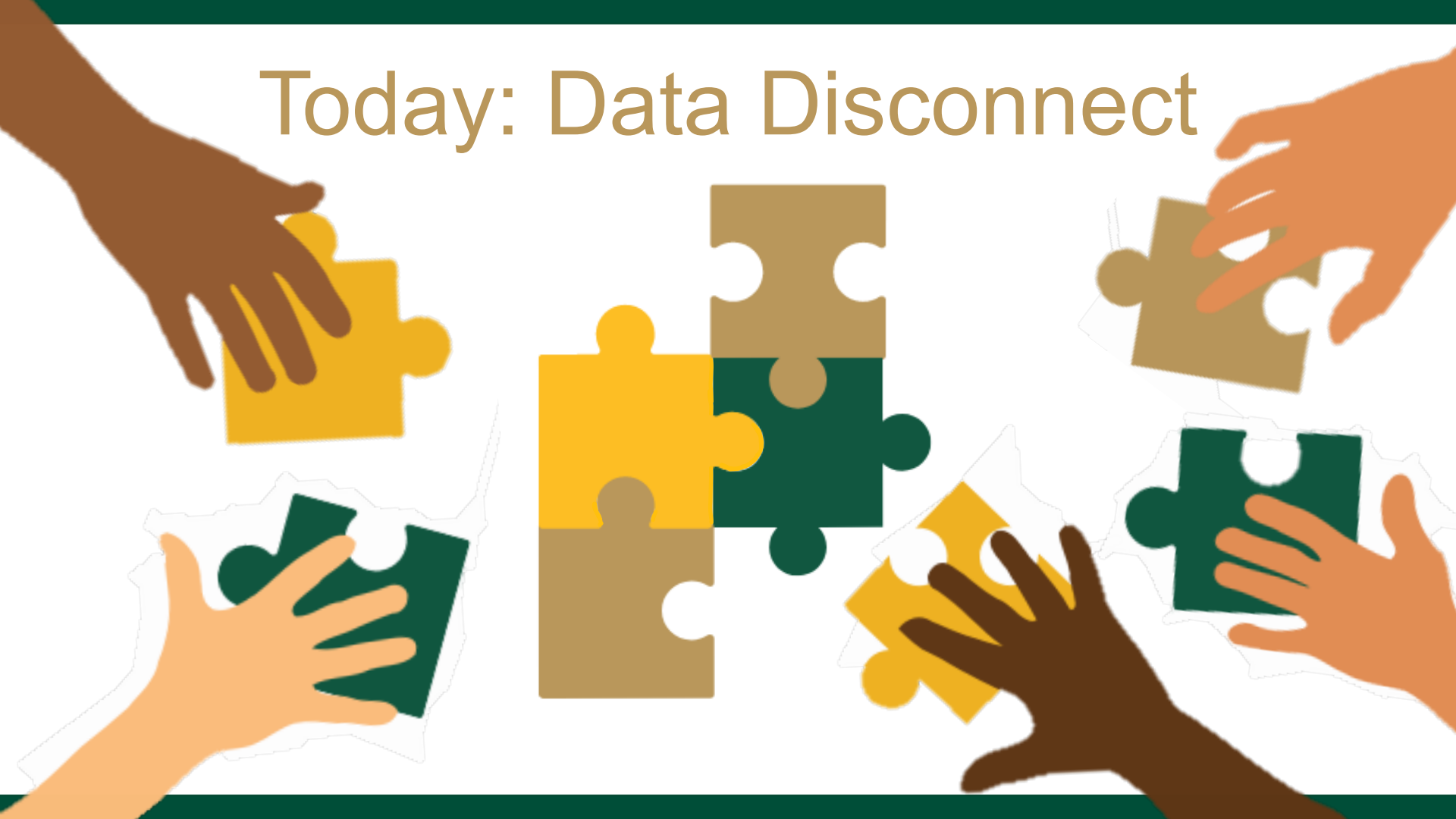


Goal 2: Eliminate access barriers

Goal 3: Strengthen impact



Today: Data Disconnect



Future State: Unified Data



Assessment: Infrastructure & Access



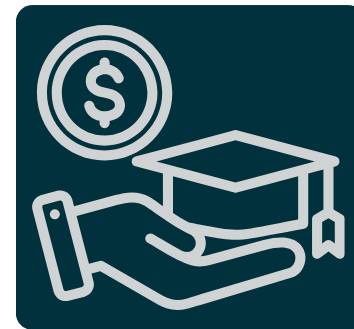
Assessment: Impact



Resource Needs



**Dissemination &
Tracking**



**Student Support
Grants**



**Sandbox/Innovation
Funding**



Mentor Support



**Curricular Innovation
& ALE Faculty Fellows**

Applied Learning for All

Appendix



WILLIAM & MARY

CHARTERED 1693

Additional Resources

- [W&M definition of applied learning](#)
- [Charles Center-Career Development & Professional Engagement credit-bearing summer internship course pilot report](#)
- [Arts & Sciences faculty workloads in internship courses survey presentation](#)