

To view this email as a web page, click [here](#).



# GLOBAL RESEARCH INSTITUTE

NEWSLETTER

WILLIAM & MARY

We've collected ten of the most impressive GRI research endeavors in 2019. Selecting only ten was tough, given the exciting work being done by faculty, staff, and students in all GRI's research projects. We hope you will share our pride in this inspiring work. Click any of the stories below to learn more about the featured research.

High caliber research like the work highlighted here is only possible with the generous support of our donors. Private support also helps us innovate and incubate new ideas. If you're as impressed as we are by these 2019 research highlights, we hope you'll consider [supporting](#) the Global Research Institute.

Cheers,  
Sue & Mike



1

## CENTER FOR AFRICAN DEVELOPMENT

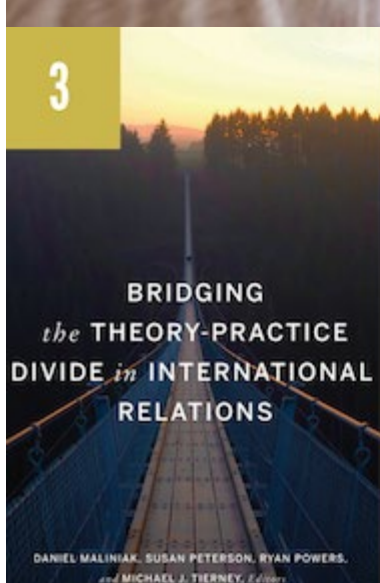
In *Nature*, Phil Roessler and a team of researchers offered the first expert assessment of the relative impact of climate on civil war. While they estimate to date climate variability has had only a marginal effect on armed conflict, it is expected to increase substantially if global warming continues.



2

## AMERICAN BOSNIAN COLLABORATION

In a working paper titled, "Impact of Film Education on Intercultural Communication Skills throughout the American Bosnian Collaboration Project," ABC researchers and their Bosnian counterparts systematically investigated the effectiveness of their use of creative filmmaking in promoting intercultural communication among Bosnian children.



3

## TEACHING, RESEARCH, & INTERNATIONAL POLICY

A new book edited by TRIP researchers - including W&M faculty and former students - presents a first-of-its-kind across the academic-policy divide. Leading IR scholars and veteran policy practitioners use 15 years' worth of TRIP data to reflect on the nature and size of the gap within eight different issue areas of international relations.



4

## AIDDATA

China is spending money to secure national interests and win friends. But is it working? The answer, according to three data-driven studies by AidData, in collaboration with the Asia Society Policy Institute and the Center for Strategic and International Studies, is "yes, but it's complicated."



5

## INTERNATIONAL JUSTICE LAB

In "Human Rights versus National Interests: Shifting US Public Attitudes on the International Criminal Court," published in the *International Studies Quarterly*, IJL Director Kelebogile Zvobgo investigates how Americans respond to competing arguments about US membership in the International Criminal Court.



6

## PROJECT ON INTERNATIONAL PEACE AND SECURITY

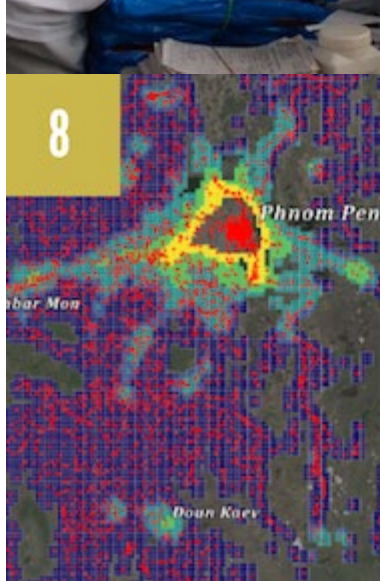
PIPS Fellows wrote their white papers on emerging issues in national security including: using distance education to protect Nigerian girls from Boko Haram, growing ethno-religious divisions in the Russian military, global recycling flows, and Russia's manipulation of historical narratives to sow political divisions in the West.



7

## IGNITE

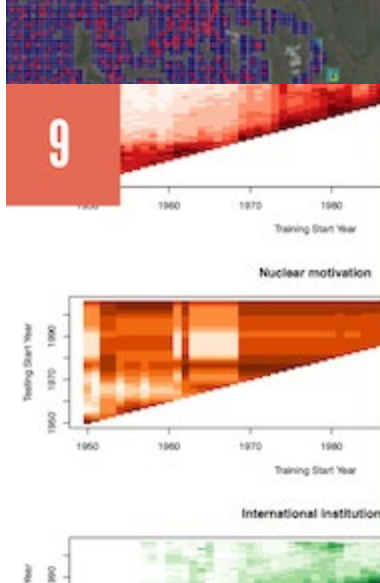
A study published in *PLOS ONE* finds that a national bednet campaign in the DRC led to a 41% drop in child mortality rates. Ignite Director and lead author Carrie Dolan said, "This study measures a lever that governments and donors can directly affect - access to a bednet program - rather than one that they can only indirectly influence, like ensuring household and individual use of bednets."



8

## AIDDATA

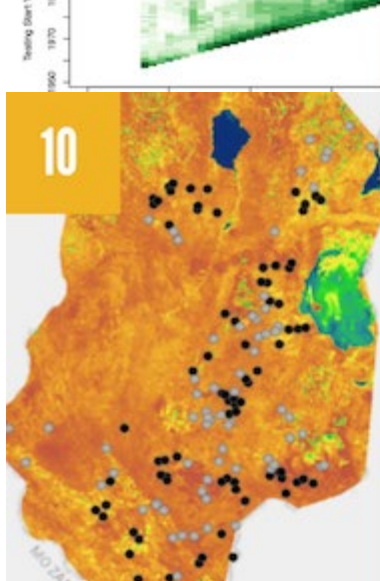
AidData used satellite imagery to evaluate the impacts of a locally led governance program in Cambodia nearly a decade after donors made their last financial contributions, finding that the program not only provided immediate benefits, but also altered the trajectory of economic development in Cambodia. This impact evaluation provides insights for those who work in post-conflict settings.



9

## NUKELAB

How has the nuclear proliferation landscape shifted over time? Which policy tools are likely to prove most effective in addressing tomorrow's proliferation challenges? Find out in a recent working paper, written by NukeLab Director Jeff Kaplow, which launched the first phase of a new NukeLab project.

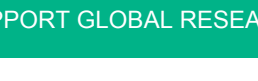


10

## AIDDATA

AidData worked with a consortium to evaluate the long term impacts of a USAID Food for Peace program in Malawi on households' resilience and food security and determine whether people's lives had changed as a result of the program.

SUPPORT GLOBAL RESEARCH



This email was sent by: **William & Mary**  
PO Box 8795 Williamsburg, VA, 23185, United States