



October 2021

# Student Voting Rates for College of William and Mary

2020 NSLVE Campus Report

**October 2021**

**Dear Colleagues:**

We are pleased to send this tailored report containing your students' voting rates for 2020. This report contains three years of relevant topline data: 2016, 2018, and 2020. As always, we disaggregate the data so you can better identify and address gaps in participation.

College and university students participated in record-breaking numbers in the 2020 election. In 2016, the Average Institutional Voting Rate was 53%. This year, it jumped to 66%. We encourage you to review Democracy Counts 2020, our most recent national report.

As in past years, we urge you to share this report widely and strategically, particularly with faculty who, in 2020, were often the most consistent communicators with students about ever-changing voting conditions and deadlines. We also urge you to review our recommendations for engaging elections to cultivate a robust and healthy campus climate for political engagement, discourse, equity, and participation: Election Imperatives (2019) and the more recent Election Imperatives: A Time of Physical Distancing and Social Action. Since "pervasive political discussions" and attentiveness to the campus culture around speech and academic freedom are among our top recommendations, we direct you to our discussion guides on talking about your NSLVE report, on free speech and inclusion, and on hot topics, our Making Sense of ... guides.

Finally, we always encourage you to work with us. Help us help you get better data by reaching out. Email [IDHE@Tufts.edu](mailto:IDHE@Tufts.edu) for more information. And as always, watch your inbox for our periodic newsletter, IDHE Update, for announcements about upcoming releases and new resources.

Congratulations on engaging your students in the 2020 election. Remember, student political learning is a year-round objective. Elections may be episodic, but student political engagement should not be.

All the Best,  
IDHE Team



**(Top Row from left) Duy Trinh, Program Administrator; Adam Gismondi, Director of Impact; Dave Brinker, Senior Researcher; (Bottom Row from left) Nancy Thomas, Director; Norma López, Postdoctoral Scholar; Prabhat Gautam, Data Manager.**

We also want to acknowledge and thank **Syed Golam Mohaimen, M.S. student in Data Science at Tufts University** for his contributions toward the creation of these reports.

# In This Report

This report presents data on student voter participation rates for your campus. The topline counts on page 5 tells you how many students voted, but we encourage you to look carefully at the data on subsequent pages to learn who voted. Data are presented in the form of vessel charts, overlapping donut charts, and tables.

	2014			2018			2014-2018 Change (p.p.)
	Enrolled	Voted	Rate (%)	Enrolled	Voted	Rate (%)	
Asian	-	-	-	-	-	-	-
American Indian/ Alaska Native	-	-	-	-	-	-	-
Black	-	-	-	-	-	-	-
Hispanic	-	-	-	-	-	-	-

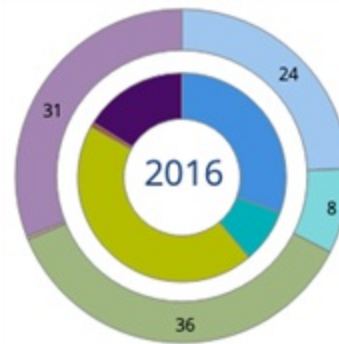
## Tables

The tables show, on the left-side columns, the numbers of students and the rates from 2016, 2018, and 2020. On the left-side, percentage point (p.p.) changes between 2016 and 2020. A red down arrow indicates a decrease, a green up arrow indicates an increase, and a yellow arrow pointing to the right indicates no change. "-" in these tables indicates that the data is unavailable/missing, or is available for 10 or less students.



## Vessel Chart

This chart shows rates out of 100%, with arrows to the right of each bar representing relevant national averages (medians), which you can find in IDHE's national report Democracy Counts 2020.



## Overlapping Donut Chart

This chart is used to show the breakdown of vote method utilization (page 10), with the outer ring showing your campus method utilization and the inner ring showing the national breakdown. These are described in percentages.

# Voting, Registration and Yield Rates

**YOUR INSTITUTION**

**82.4%**  
2020 Voting Rate

**+9.6**  
Change From 2016

**ALL INSTITUTIONS**

**66%**  
2020 Voting Rate

**REGISTRATION RATE**

Year	Registration Rate
2016	90.1%
2018	88.8%
2020	92.0%

The **Registration Rate** is the percent of your voting-eligible students who registered to vote.

**VOTING RATE OF REGISTERED STUDENTS**

Year	Voting Rate of Registered Students
2016	80.8%
2018	66.3%
2020	89.6%

The **Voting Rate of Registered Students** is the percent of registered students who voted on Election Day. We often refer to this as the “yield” rate.

**VOTING RATE**

Year	Voting Rate
2016	72.8%
2018	58.9%
2020	82.4%

The **Voting Rate** is the percentage of eligible students who voted on Election Day. The voting rate is also the product of the registration and yield rates.

# Looking Closer

## Voting and Registration Rates

	2016	2018	2020	2016-2020 Change (p.p.)
<b>Total Student Enrollment</b>	8,865	8,888	9,009	↑ 144
(Age under 18/Unknown)	-	-	-	-
(IPEDS estimated non-resident aliens)	714	722	551	↓ -163
(FERPA records blocked)	28	20	15	↓ -13
(Non-Degree Seeking Students)	-	-	25	-
<b>Total eligible voters</b>	8,118	8,146	8,418	↑ 300
<b>Number of students who registered</b>	7,315	7,233	7,742	↑ 427
<b>Number of students who voted</b>	5,913	4,795	6,933	↑ 1,020
<b>Registration Rate %</b>	90	89	92	↑ 2
<b>Voting Rate of Registered Students %</b>	81	66	90	↑ 9
<b>Voting Rate %</b>	73	59	82	↑ 10

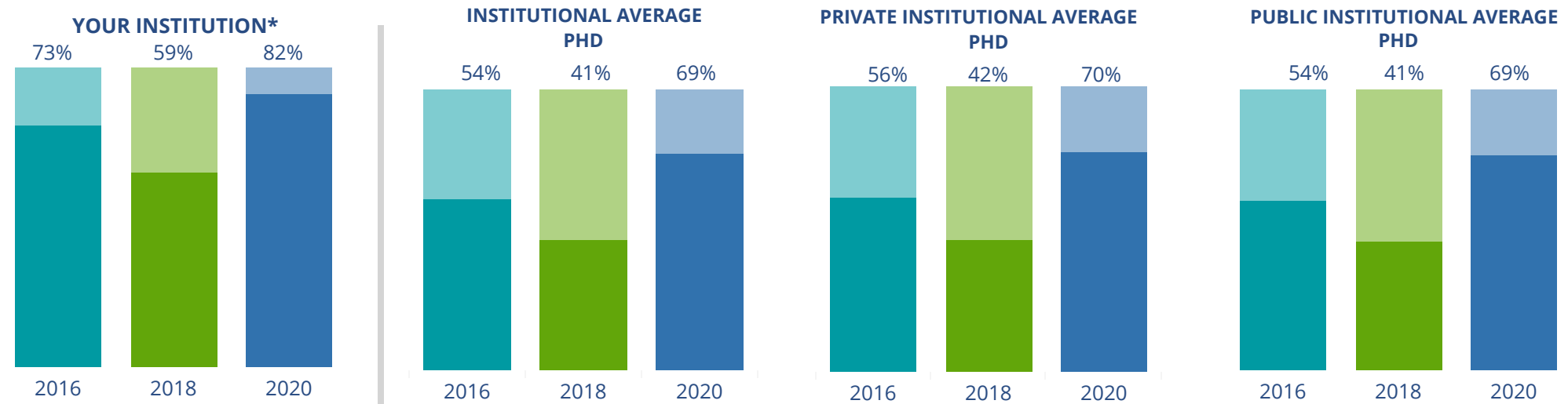
**This page provides the numbers we used to calculate your voting, registration, and yield rates.** The sub-categories under total student enrollment are the adjustments that we make to account for students who are ineligible to vote due to age or citizenship status. We also exclude, when correctly flagged, students who are not pursuing degrees.

We use IPEDS-derived estimates of NRAs when institutions do not submit non-resident alien status data to NSC, or we cannot verify the accuracy of the reported counts. This estimate is given by "IPEDS estimated non-resident aliens" on this page. If you believe the number of international students reported on this report is incorrect, you can manually adjust your institution's voting rates by using our recalculation tool. <https://id-he.tufts.edu/nslve/nslve-recalculation-tool>.

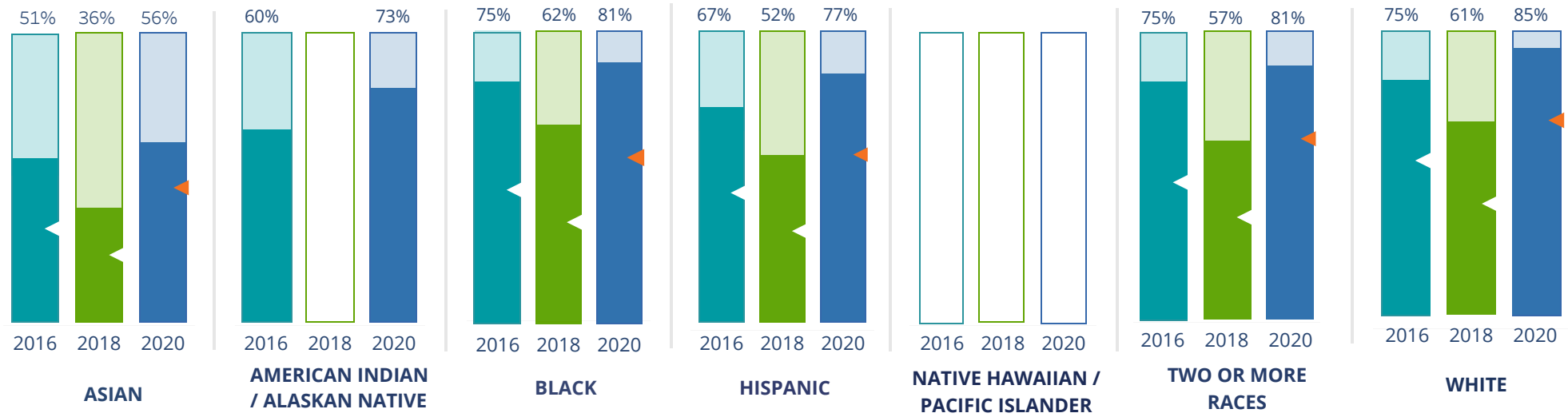
## By Institution Types



These are estimated voting rates of your institution compared to the average voting rates of similar institutions in NSLVE. \*"Your Institution" chart is presented at a different scale.



# By Race / Ethnicity



**These are estimated voting rates for race / ethnicity groups.** These classifications are provided by campuses and are obtained following race reporting procedures\* defined by the National Center for Education Statistics of the Institute of Education Sciences (IES). Please see our FAQ for more detail on why we cannot report national benchmark for some of the demographic groups:

<https://tufts.app.box.com/v/idhe-nslve-report-faq>

If you notice unavailable/missing data in this page, it could mean any of the following for your institution: (i) does not report this data; (ii) did not provide this data in past years; (iii) does not separately submit data for one or more of the demographic groups, or (iv) the data is reported for 10 or fewer students.

\* <https://nces.ed.gov/ipeds/report-your-data/race-ethnicity-collecting-data-for-reporting-purposes>

# Looking Closer

## By Race/Ethnicity

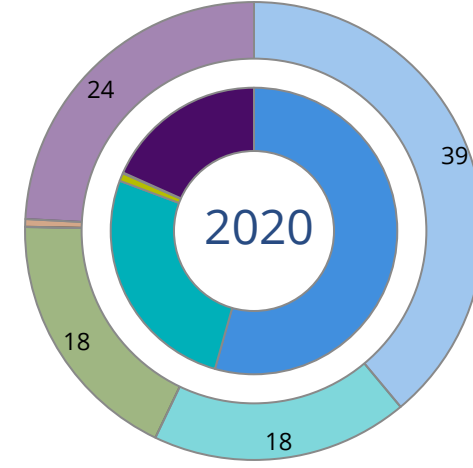
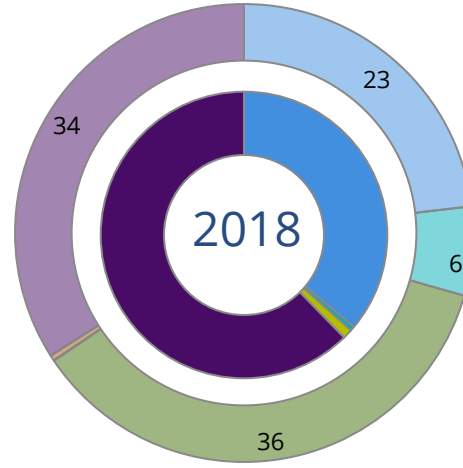
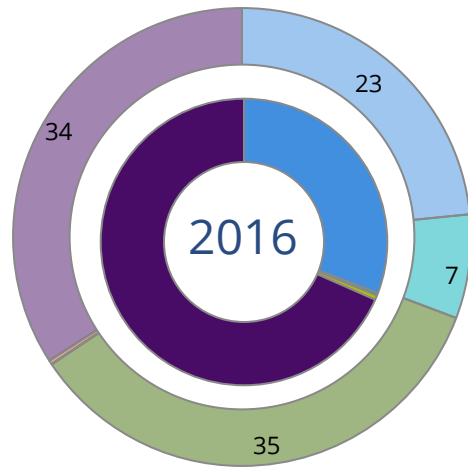
**This page provides the numbers we used to calculate race / ethnicity group voting rates.** We include the counts of students and the change in rates between the two most recent comparable election years. If you notice unavailable/missing data in this page, it could mean any of the following for your institution: (i) does not report this data; (ii) did not provide this data in past years; (iii) does not separately submit data for one or more of the demographic groups, or (iv) the data is reported for 10 or fewer students.

	2016			2018			2020			2016-2020 Change (p.p)
	Enrolled	Voted	Rate	Enrolled	Voted	Rate	Enrolled	Voted	Rate	
<b>Asian</b>	625	320	51	673	241	36	861	485	56	↑ 5
<b>American Indian/ Alaska Native</b>	20	12	60	15	-	-	15	11	73	↑ 13
<b>Black</b>	638	479	75	663	409	62	643	519	81	↑ 6
<b>Hispanic</b>	706	470	67	739	386	52	703	542	77	↑ 11
<b>Native Hawaiian/ Pacific Islander</b>	-	-	-	-	-	-	-	-	-	-
<b>2 or More Races</b>	358	269	75	384	217	57	481	387	80	↑ 5
<b>White</b>	5,422	4,050	75	5,407	3,311	61	5,533	4,680	85	↑ 10
<b>Race Unknown</b>	1,058	313	30	977	221	23	721	305	42	↑ 13



# By Voting Method

■ Not-In-Person 
 ■ Early Vote 
 ■ In-Person 
 ■ Other 
 ■ Provisional 
 ■ Unknown



	2016		2018		2020		2016-2020	
	Voted	Rate	Voted	Rate	Voted	Rate	Change (p.p.)	
<b>Early Vote</b>	16	0	23	1	1,820	26	26	↑
<b>In-Person on Election Day</b>	31	1	54	1	64	1	0	↑
<b>Not-In-Person</b>	1,824	31	1,730	36	3,775	54	24	↑
<b>Other</b>	-	-	-	-	-	-	-	-
<b>Provisional</b>	-	-	-	-	-	-	-	-
<b>Voting Method Unknown</b>	4,042	68	2,986	62	1,264	18	-50	↓

**These are estimated rates for vote method utilization, the number of students utilizing each method, and the percent of students utilizing each method.** Not all U.S. states provide information on vote method; voting method for voter files from these states are classified "Voting Method Unknown." For a list of these states, see our FAQ. <https://idhe.tufts.edu/nslve/nslve-faq#CampusReports>

## By Age Group

	2016	2018	2020
18-21	69%	54%	80%
22-24	63%	50%	75%
25-29	60%	51%	67%
30-39	61%	53%	69%
40-49	74%	67%	79%
50+	89%	83%	86%

**Voting is habit-forming and young voters will usually continue as voters in subsequent elections.**

Also, young voters are more likely to be contacted by campaigns and are visible, and therefore significant, to elected officials. While in the past, we have seen voting rates increase across age groups, in recent cycles, the most significant increases have been among first-time and the youngest voters. Some colleges serve primarily young students, traditionally viewed as students in the 18-21 or 22-24 categories here. Others have much higher numbers of enrolled older undergraduate or graduate students.

# Looking Closer

## By Age Group

**Here, we provide the numbers of students in each age category and the voting rates for each group.** These are based on the student's age on the day of the election, as calculated by the National Student Clearinghouse using data from student enrollment records.

	2016			2018			2020			2016-2020	
	Enrolled	Voted	Rate	Enrolled	Voted	Rate	Enrolled	Voted	Rate	Change (p.p)	
<b>18-21</b>	5,755	3,951	69	5,762	3,126	54	5,699	4,572	80	↑ 12	
<b>22-24</b>	1,239	782	63	1,231	618	50	1,232	926	75	↑ 12	
<b>25-29</b>	817	491	60	823	417	51	894	599	67	↑ 7	
<b>30-39</b>	641	391	61	651	343	53	737	507	69	↑ 8	
<b>40-49</b>	242	180	74	243	163	67	263	209	79	↑ 5	
<b>50+</b>	133	118	89	154	128	83	140	120	86	↓ -3	

# Looking Closer

## By Sex

	2016			2018			2020			2016-2020	
	Enrolled	Voted	Rate	Enrolled	Voted	Rate	Enrolled	Voted	Rate	Change (p.p)	
Female	4,938	3,545	72	4,997	2,921	58	5,132	4,179	81	↑ 10	
Male	3,888	2,368	61	3,865	1,873	48	3,831	2,753	72	↑ 11	

**These are estimated voting rates for sex groups and the numbers we used to calculate their voting rates.** These classifications are provided by campuses and are obtained following the reporting procedures defined by the National Center for Education Statistics (NCES) of the Institute of Education Sciences (IES). Presently, NCES requires institutions to report students as “Male” or “Female” only.\*

If you notice missing data in this page, it could mean any of the following for your institution: (i) does not report this data; (ii) did not provide this data in past years; (iii) does not separately submit data for one or more of the demographic groups, or (iv) the data is reported for 10 or fewer students.

\*<https://surveys.nces.ed.gov/ipeds/public/survey-materials/faq?faqid=11>

# Looking Closer

## By Education Level / Undergraduate Class Year

	2016			2018			2020			2016-2020	
	Enrolled	Voted	Rate (%)	Enrolled	Voted	Rate (%)	Enrolled	Voted	Rate (%)	Change (p.p)	
<b>EDUCATION LEVEL</b>											
<b>Undergraduate</b>	6,233	4,262	68	6,302	3,400	54	6,188	4,932	80	↑	11
<b>Graduate</b>	2,311	1,432	62	2,374	1,259	53	2,649	1,890	71	↑	9
<b>Class Unknown</b>	283	219	77	188	136	72	128	111	87	↑	9
<b>CLASS YEAR</b>											
<b>First Year</b>	1,181	66	776	1,205	49	593	1,181	78	918	↑	12
<b>Second Year</b>	1,561	69	1,083	1,540	54	825	1,460	79	1,155	↑	10
<b>Upper Level</b>	3,564	69	2,459	3,617	56	2,027	3,560	81	2,873	↑	12
<b>ENROLLMENT STATUS</b>											
<b>Full-time</b>	7,974	5,277	66	7,926	4,186	53	7,826	6,031	77	↑	11
<b>Part-time</b>	853	636	75	938	609	65	1,139	902	79	↑	5

**These are estimated voting rates by Education Level (undergraduate/graduate), Class Year, and Enrollment Status (full-time/part-time), and the numbers we used to calculate these rates.**

If you notice missing data in this page, it could mean any of the following for your institution: (i) does not report this data; (ii) did not provide this data in past years; (iii) does not separately submit data for one or more of the demographic groups, or (iv) the data is reported for 10 or fewer students.

## By Field of Study

FIELDS	2016			2018			2020			2016-2020	
	Enrolled	Voted	Rate	Enrolled	Voted	Rate	Enrolled	Voted	Rate	Change (p.p)	
Area, Ethnic, Cultural, and Gender Studies	100	67	67	101	65	64	90	70	78	↑	11
Biological and Biomedical Sciences	567	406	72	562	307	55	585	477	82	↑	10
Business, Management, and Marketing	1,134	639	56	1,221	577	47	1,340	949	71	↑	14
Computer and Information Sciences	279	135	48	261	99	38	247	150	61	↑	12
Education	351	270	77	418	286	68	598	495	83	↑	6
English Language and Literature	182	146	80	170	115	68	120	106	88	↑	8
Foreign Languages, Literatures, and Linguistics	62	44	71	88	49	56	89	76	85	↑	14

**These are estimated voting rates by field of study, and the numbers we used to calculate the field of study rates.** For an explanation of CIP codes, please see our FAQ.\* There are roughly 8,000 fields of study among U.S. colleges and universities, so we provide rates for condensed categories.

\*<https://tufts.app.box.com/v/idhe-nslve-report-faq>

# By Field of Study

FIELDS	2016			2018			2020			2016-2020	
	Enrolled	Voted	Rate	Enrolled	Voted	Rate	Enrolled	Voted	Rate	Change (p.p)	
History	219	159	73	206	131	64	203	160	79	↑	6
Legal Professions and Studies	685	457	67	640	368	58	680	480	71	↑	4
Liberal Arts and Sciences, and Humanities	2,619	1,761	67	2,519	1,284	51	2,768	2,158	78	↑	11
Mathematics and Statistics	117	61	52	127	45	35	131	80	61	↑	9
Multi/Interdisciplinary Studies	209	148	71	230	128	56	166	131	79	↑	8
Parks, Recreation, Leisure, and Fitness Stu..	241	166	69	258	116	45	210	176	84	↑	15
Philosophy and Religious Studies	44	28	64	59	28	47	46	37	80	↑	17
Physical Sciences	344	222	65	328	188	57	316	252	80	↑	15
Psychology	282	202	72	332	188	57	344	270	78	↑	7
Public Administration and Social Service P..	133	105	79	111	78	70	83	80	96	↑	17
Social Sciences	857	606	71	961	558	58	768	629	82	↑	11
Visual and Performing Arts	79	59	75	86	50	58	49	42	86	↑	11
Unknown	323	232	72	186	135	73	132	115	87	↑	15

# About This Report

## Thank you for participating in the National Study of Learning, Voting, and Engagement.

Since NSLVE's launch in 2013, nearly 1,200 colleges and universities have signed up to receive their voting rates for the 2012, 2014, 2016, 2018, and 2020 federal elections.

Along with others, your institution's participation in this study has allowed us to build a robust database of over 50 million college student records, about 10 million for each election year, that serve as a foundation for innovative research on college student political learning and engagement in democracy.

NSLVE is a signature initiative of the Institute for Democracy and Higher Education (IDHE) at Tufts University's Jonathan M. Tisch College of Civic Life. The mission of IDHE is to shift college and university priorities and culture to advance political learning, agency, and equity. We achieve our mission through research, resource development, technical assistance, and advocacy.

### About the Data

The voter registration and voting rates in this report reflect the percentage of your institution's students who were eligible to vote and who actually voted in the 2016, 2018, and 2020 elections.

These results are based on enrollment records your institution submitted to the National Student Clearinghouse (NSC) and publicly available voting files collected by L2 Political.

Enrollment lists are adjusted by deducting students under age 18 (at the time of the election), people identified as non-degree seeking and those identified by campuses as "nonresident aliens" (NRAs) (the federal government's category for mostly international students). Unfortunately, not all campuses report NRAs to NSC. For those campuses, we use IPEDS to calculate the number of NRA students on each campus and adjust NSC enrollment numbers to estimate the number of students to remove. We also quality check NRA removals by verifying that there is little to no discrepancy between the number of international students reported by the campus to IPEDS and to NSC. We cannot adjust subgroup analyses absent identification of NRAs verified by the process above. We welcome closer partnerships with individual colleges and universities to provide more accurate rates. For more on the data and the matching process, see our FAQ on Campus Reports.



College of William and Mary

Thank you for the work you do to improve your students' political learning and engagement. We hope that you find your NSLVE report useful. For up-to-date news on NSLVE data, resources, and to sign up for our newsletter visit: <https://idhe.tufts.edu>.

References: IDHE encourages report recipients to share this report as broadly as possible, including posting it on the college or university's website. When doing so, please use the following citation: Institute for Democracy & Higher Education: National Study of Learning, Voting and Engagement. (2021). 2016, 2018, and 2020 report for \_\_\_\_\_ [name of institution]. Medford, MA.



Barnum Hall  
163 Packard Ave.  
Medford, MA 02155

tischcollege@tufts.edu  
617.627.3453



Institute for Democracy & Higher Education:  
National Study of Learning, Voting, and Engagement  
Barnum Hall, Medford, MA 02155

Follow Us on Twitter: @TuftsIDHE  
NSLVE@tufts.edu  
617.627.0620