

Schroeder Center for Health Policy at William & Mary

May 2021

Looking Back at 2020-2021



WILLIAM & MARY
**SCHROEDER CENTER
FOR HEALTH POLICY**

In mid-May, the Schroeder Center for Health Policy and William & Mary will conclude our most unique academic year in memory. For many W&M students, the COVID pandemic brought new attention to the role of health policy during a public health and economic crisis. At the Schroeder Center, we sought to show students how they could deepen their understanding of health policy topics by connecting them to distinguished speakers and helping them conduct their own research. And our internship program helped students navigate the unprecedented disruption to the job market. We are excited to share with you the many opportunities that took place at the Schroeder Center this past academic year.

- Jen Mellor

Director of the Schroeder Center and Professor of Economics

Learning about Health Policy and COVID

Because of William & Mary's prohibitions on outside visitors, all Schroeder Center activities took place remotely this academic year. With the collaboration of W&M's faculty across disciplines, however, we continued to provide students with a number of exciting educational opportunities including hosting a series of virtual multidisciplinary talks on the COVID-19 pandemic. The talks offered insights on the pandemic from economics, history, psychology, epidemiology, and public policy. Faculty integrated the talks into their courses, thus allowing hundreds of W&M students to participate. Our speakers included:



- [Rashida Dorsey](#), PhD, MPH (Founder and Principal of WisdomBuilds, LLC) spoke about health disparities among racial and ethnic minorities in the U.S. and social determinants of health to help explain these disparities, as well as the use of data in the era of COVID-19. (W&M faculty host: [Iyabo Obasanjo](#), Kinesiology and Health Sciences)
- [Marvin Figueroa](#) (Deputy Secretary of Health and Human Resources in the Commonwealth of Virginia) discussed some of the challenges facing policymakers in Virginia related to COVID-19 and explained how the pandemic can be directly connected to other structural policy problems. (W&M faculty host: [Jennifer Mellor](#), Schroeder Center and Economics)
- [Nicholas Papageorge](#), PhD (Broadus Mitchell Associate Professor of Economics at Johns Hopkins University) talked about behavior and policy during a pandemic using HIV/AIDS as an analogy. (W&M faculty hosts: [Jennifer Mellor](#), Schroeder Center and Economics, and [Peter Savelyev](#), Economics)
- [Eric Pedersen](#), PhD (Associate Professor of Psychiatry and the Behavioral Sciences from the Keck School of Medicine at the University of Southern California) examined the impact of COVID-19 on college students studying abroad. (W&M faculty host: [Adrian Bravo](#), Psychological Sciences)

Showcasing the COVID-Related Work of W&M Faculty

As part of our ongoing efforts for students to learn about COVID, the Schroeder Center highlighted the work of W&M's talented faculty as it relates to the pandemic:

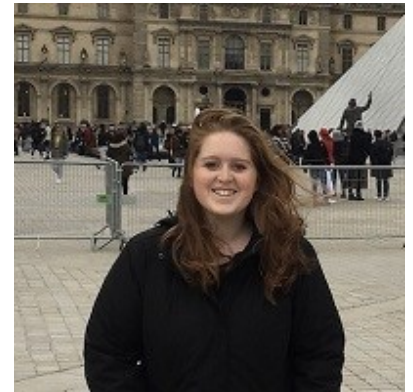
- [Racial and ethnic disparities during the pandemic](#): Elyas Bakhtiari (Sociology)
- [Stress of homeschooling in a pandemic](#): Danielle Dallaire (Psychological Sciences)
- [Older adults and telemedicine](#): Christy Jensen (Riverside Center for Excellence in Aging & Lifelong Health) and Christy Helsel (TeleHealth Program, Riverside Health System)
- [Healthcare workforce and COVID-19](#): Peter McHenry (Economics and Public Policy)
- [Medicare and COVID-19](#): Jennifer Mellor (Schroeder Center and Economics)
- [Gender dynamics of COVID-19](#): Iyabo Obasanjo (Kinesiology and Health Sciences)

Helping Students Move into Health Policy Careers

For students entering the job market for the first time, the pandemic brought extraordinary challenges. The Schroeder Center responded by launching multiple efforts to help W&M's students identify and successfully enter rewarding health policy-related summer internships and permanent positions. We did this in four ways:

- **Provided Financial Support for Low-Paid and Unpaid Health Policy Internships**

The Schroeder Center and the Public Policy Program began a new initiative to support students, with up to \$3,000, who were offered low-paid or unpaid summer internships in the public and private sectors. The Schroeder Center awarded its first two health policy fellowship recipients in summer 2020 (see below), and we look forward to assisting additional students this summer:



[Center for Medical Economics and Innovation, Pacific Research Institute](#) – Garrison Chura ('22, BBA in Finance and BA in Public Policy) conducted policy analysis on California AB 72, which is a rate-setting law in response to the problem of surprise medical billing

[CoronaNet Research Project](#) – Maggie Delaney ('21, BA in Public Policy with a minor in Data Science) tracked and analyzed Nigeria's policy responses (quarantines, border closures, business restrictions, and mask mandates) to the COVID-19 pandemic in an effort to create a database of policy responses to be used in determining the effectiveness of governmental responses in combatting the spread of the virus

- **Created a Searchable Internship Database**

To help students identify summer internships, the Schroeder Center and the Public Policy Program identified about 260 policy relevant internships and created, with the help of W&M's Cohen Career Center, a new searchable database for Public Policy majors. The database includes internships that address health policy specifically and social determinants of health, such as socioeconomic and environmental factors, more generally. The database also includes opportunities that are paid and unpaid, U.S. and internationally-based, and in the public and private sector. Schroeder Center and Public Policy staff reviewed all state Governors programs around the country, included Congressional internships from Committees and from the most relevant House and Senate offices for W&M students, and examined substantive health policy internships available at nonprofits. Students are able to view health policy positions by geographic area.

Helping Students Move into Health Policy Careers (continued)

- **Matched Students with Health Policy Alums**

In our new Health Policy Careers Chat program, the Schroeder Center matched undergraduates with W&M alums working in the health policy field. Students discussed with their individual alums their career paths, current job responsibilities, and their experiences at W&M that helped prepare them for their health policy-related work. Please read about our alums' important health policy work below:

[Lawren Bercaw](#) (MPP, '05; PhD); Research Public Health Analyst, RTI International -- *interviewed by Sarah Goswick (BA, Public Policy/Kinesiology, '21)*

[William Bleser](#) (BS, Neuroscience, '09; MSPH; PhD); Managing Associate, Payment Reform and Population Health, Margolis Center for Health Policy, Duke University -- *interviewed by Nicole Larsen (BA, Public Policy/Kinesiology, '23)*

[Kate Taft](#) (BA, Psychology, '03; MPH); Associate Director of Child and Adolescent Health, Association of Maternal & Child Health Programs (AMCHP) -- *interviewed by Lucy Greenman (BA, Interdisciplinary Studies, '22)*

- **Organized a Health Policy Careers Panel**

The Schroeder Center hosted its second Health Policy Careers panel. The panel featured four W&M alums working in health policy: **Rachel Becker**, '19, Policy and Communications Advisor to the Secretary of Health & Human Resources in the Virginia Governor's Office; **Will Bleser**, '09, Managing Associate of Payment Reform and Population Health at the Margolis Center for Health Policy at Duke University; **Ashley Gray**, '14, Lead Health Domain Specialist at MITRE Corporation; and **McKinley Saunders**, '19, Economist at Research Triangle Institute (RTI) International. These outstanding alums offered tips to W&M students on searching for jobs, planning for graduate school, and staying current in a rapidly changing health policy field. To read more, please visit the [Schroeder Center website](#).

Focusing on Social Determinants of Health With a New Health Policy Journal Club



In early 2021, the Schroeder Center sponsored a new undergraduate Health Policy Journal Club, which focused its semester-long activities on understanding the social determinants of health and policies to address them. In addition to reading and discussing published health policy research articles each week in the tradition of medical school journal clubs, the club and the Schroeder Center hosted four virtual guest speakers:

- [Policies to Address Social Determinants of Health and Telehealth](#) -- Krista Drobac, MPP (Partner, [Sirona Strategies](#))

- [Social Determinants of Health in the Williamsburg Area](#) -- Carol Sale, RN, MSN (President and CEO) and Paulette Parker (Senior Program Officer) of the [Williamsburg Health Foundation](#)

- [Social Determinants of Health: Clinical Perspective](#) -- David Limbrick, MD, PhD (Executive Vice-Chair, Department of Neurosurgery; Chief, Division of Pediatric Neurosurgery; T.S. Park, MD Chair of Pediatric Neurosurgery; Professor of Neurological Surgery and Pediatrics; Neurosurgeon-in-Chief, St. Louis Children's Hospital)

Sending Students to National Conferences

Five William & Mary undergraduates recently presented their health policy research at the annual [National Conferences on Undergraduate Research](#) (NCUR), which is “the largest symposium of its kind in the world, bringing together nearly 4,000 undergraduate students each year from all fields and disciplines.” The Schroeder Center regularly supports undergraduate students who want to enrich their academic experience at William & Mary by showcasing their health policy work to policymakers and other students and faculty from around the country.



William & Mary’s **Sarah Farney** ('21, Economics/Government), **Emily Finto** ('21, Economics/Government), **Emma Purdue** ('22, Business/Economics), **Cody Taylor** ('22, Economics/Public Policy), and **Chloe Walker** ('21, Public Policy/Sociology) prepared a poster presentation on “The Association Between Nursing Facility Quality and County Racial and Ethnic Composition: A Study of Virginia Facilities.” They found disparities in nursing facility quality between neighborhoods that have higher Black and Hispanic populations and those with non-minority populations, with lower quality nursing facilities more likely to be found in counties with higher percentages of Black and Hispanic individuals.

Sarah Farney noted that preparing for NCUR “was a great experience” and that participating in the conference encouraged her to think about how to connect the group’s study “results to actual policy” so that they “were suggesting solutions instead of just presenting a problem.” To learn more about the students' study, please visit the [Schroeder Center website](#).

Highlighting Recent Faculty Research

During the 2020-2021 school year, W&M faculty published their health policy research in academic journals and presented at conferences.

Vellore Arthi and **John Parman**. (2021). "[Disease, Downturns, and Wellbeing: Economic History and the Long-Run Impacts of COVID-19.](#)" *Explorations in Economic History*. 79:101381.

Elyas Bakhtiari. (2021). "[Migration and Health.](#)" *The Wiley Blackwell Companion to Medical Sociology*. Edited by William C. Cockerham. John Wiley & Sons.

Elyas Bakhtiari. (2020). "[Health Effects of Muslim Racialization: Evidence from Birth Outcomes in California Before and After September 11, 2001.](#)" *SSM-Population Health*. 12:100703.

Danielle Dallaire, Rebecca Schlafer, Lorie Goshin, Allison Hollihan, Julie Poehlmann-Tynan, J Mark Eddy, and Ann Adalist-Estrin. (2021). "[COVID-19 and Prison Policies Related to Communication with Family Members.](#)" *Psychology, Public Policy, and Law*. Advance Online Publication.

Carrie Dolan, McKinley Saunders, and Ariel BenYishay. (2020). "[Childhood Health and the Changing Distribution of Foreign Aid: Evidence from Nigeria's Transition to Lower-Middle-Income Status.](#)" *PLOS ONE* 15(11):e0241866.

Rebecca Farber. (2020). "[LGBTIQ Rights and Intersectional Justice During COVID-19.](#)" *Diplomatic Courier*.

Daifeng He, **Peter McHenry**, and **Jennifer Mellor**. (2020). "[The Effects of Medicare Payment Changes on Nursing Home Staffing](#)." *American Journal of Health Economics*. 6(4):411-443.

Daifeng He, **Peter McHenry**, and **Jennifer Mellor**. (2020). "[Do Financial Incentives Matter? Effects of Medicare Price Shocks on Skilled Nursing Facility Care](#)." *Health Economics*. 29(6):655-670.

Kai Hong, **Peter Savelyev**, and Kegan T.K. Tan. (2020). "[Understanding the Mechanisms Linking College Education with Longevity](#)." *Journal of Human Capital*. 14(3):371-400.

Caroline Kelsey, Morgan Thompson, and **Danielle Dallaire**. (2020). "[Community-Based Service Requests and Utilization Among Pregnant Women Incarcerated in Jail](#)." *Psychological Services*. 17(4):393-404.

Tess Kilwein, Emma Wedell, Luke Herchenroeder, **Adrian Bravo**, and Alison Looby. (2020). "[A Qualitative Examination of College Students' Perceptions of Cannabis: Insights into the Normalization of Cannabis Use on a College Campus](#)." *Journal of American College Health*. Advanced online publication.

Peter McHenry. (2020). "[The Impact of Recent State and Municipal Minimum Wage Increases on Nursing Facility Employment](#)." (co-authored with Jennifer Mellor). EALE SOLE AASLE World Conference.

Melissa McInerney, **Jennifer Mellor**, and Lindsay Sabik. (2021). "[Welcome Mats and On-Ramps for Older Adults: The Impact of the Affordable Care Act's Medicaid Expansions on Dual Enrollment in Medicare and Medicaid](#)." *Journal of Policy Analysis and Management*. 40(1):12-41.

Melissa McInerney, **Jennifer Mellor**, Lindsay Sabik, and Grace McCormack. (2020). "[ACA Medicaid Expansions Increase Medicaid Enrollment and Healthcare Utilization Among Older Adults with Chronic Conditions](#)." 9th Annual Conference of the American Society of Health Economists.

Claire McKinney. (2021). "[Biopluralism, Disability, and Democratic Politics](#)." *Politics, Groups, and Identities*. 9(2):423-437.

Jennifer Mellor, Melissa McInerney, and Lindsay Sabik. (2021). "[Misclassification of Medicaid Participation by Dual Eligibles: Evidence from the Medicare Current Beneficiary Survey](#)." *Medical Care Research and Review*. 78(2):113-124.

Ricardo Marcos Pautassi, **Adrian Bravo**, Elio Acquas, and Angelina Pilatti. (2020). "[Is Early Onset of Alcohol Use Associated with Later Alcohol Use?](#)" *Frontiers in Behavioral Neuroscience*. 14:133.

Louis Rossiter, Wingham Jacqueline Kwong, and Elizabeth Marrett. (2020). "[Healthcare Resource Use and Cost: The Impact of Adopting an Abuse-Deterrent Formulation of Extended Release Morphine](#)." *ClinicoEconomics and Outcomes Research*. 12:35-44.

Ranjan Shrestha. (2021). "[Health Insurance for the Poor, Healthcare Use and Health Outcomes in Indonesia](#)." *Bulletin of Indonesian Economic Studies*. 57(1):85-110.

Benchmarking Medicaid Managed Care Performance

The Schroeder Center was pleased to support four W&M undergraduates as they completed a report on "Benchmarks for Medicaid Managed Care Performance: A Search for State Data." **Emma Ford** ('22, Public Policy/Economics), **Lucy Greenman** ('22, Interdisciplinary Studies), **John Lesko** ('21, Public Policy/Interdisciplinary Studies), and **Jack Wood** ('22, English/Government) presented their research to staff of the Virginia Department of Medical Assistance Services. The team identified performance measures that 10 other states use in their Medicaid managed care settings which enroll seniors and persons with disabilities. The goal of the team's review was to describe benchmarks that could be helpful in evaluating the quality and adequacy of care that members receive in Virginia's Medicaid managed care program for seniors and persons with disabilities -- Commonwealth Coordinated Care Plus (CCC Plus).

Participating in One Tribe One Day



The Schroeder Center was proud to participate in W&M's [One Tribe One Day](#) events on April 13, 2021. We welcomed support to provide undergraduate and graduate students with hands-on research experiences involving timely health policy issues ([click here](#) for some examples of our ongoing student work). We also encouraged support for students working in unpaid or low-paid health policy summer internships ([click here](#) to read about one of our undergraduates who benefited from this program).