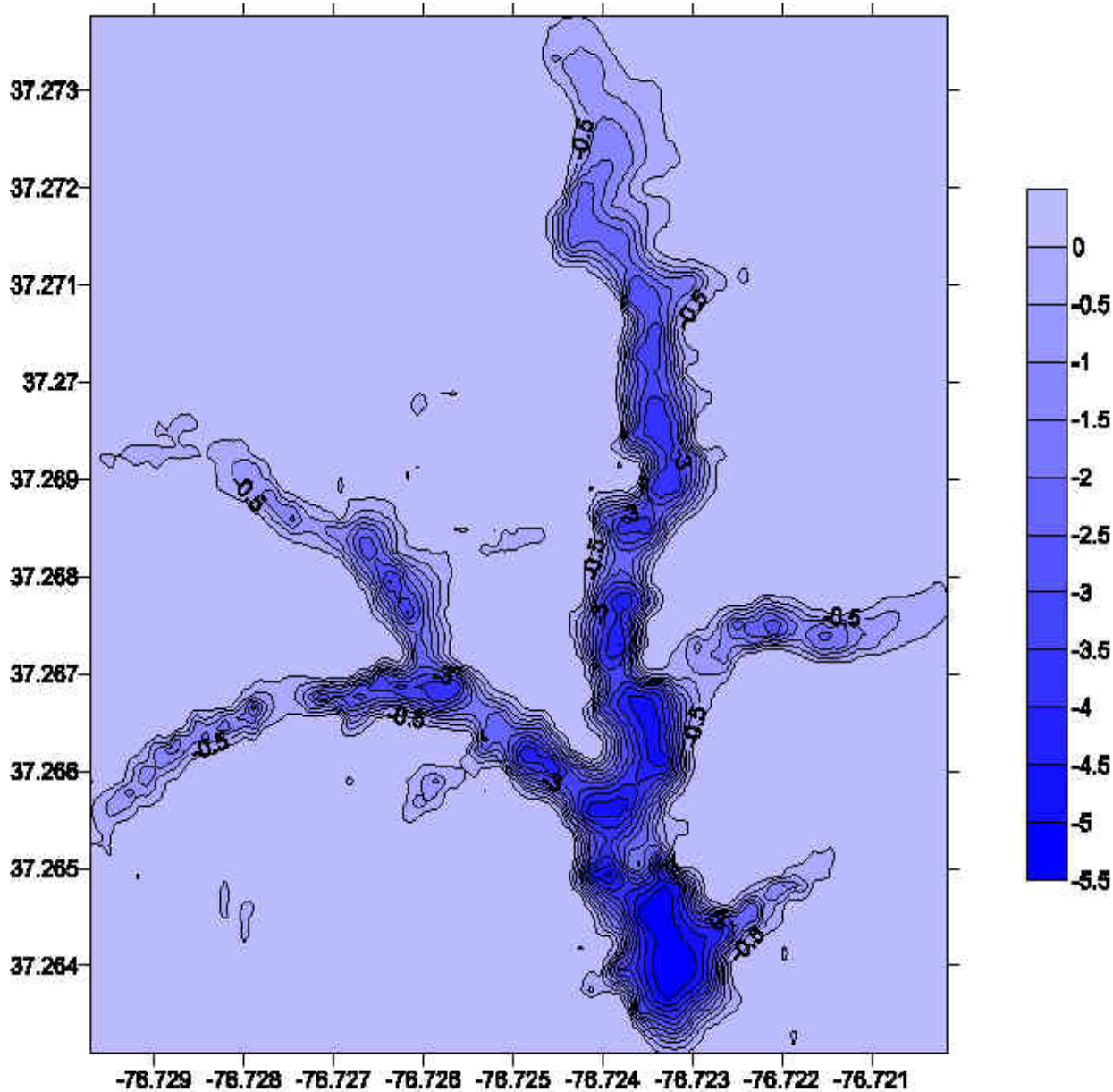




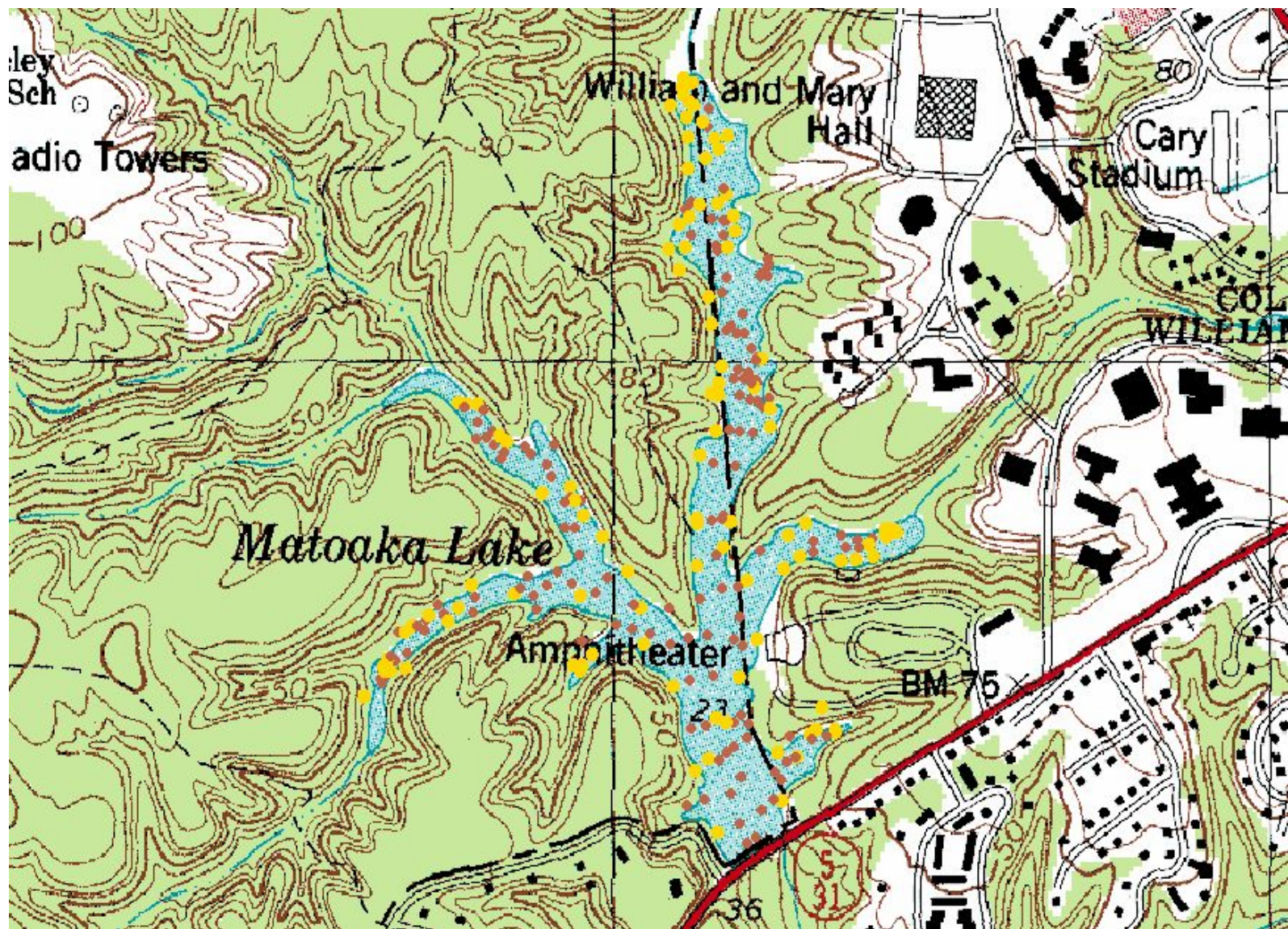
# **Bathymetry and plant/aglal distribution in Lake Matoaka**

**Kate Wilkin '04  
Mellisa Pensa '04**

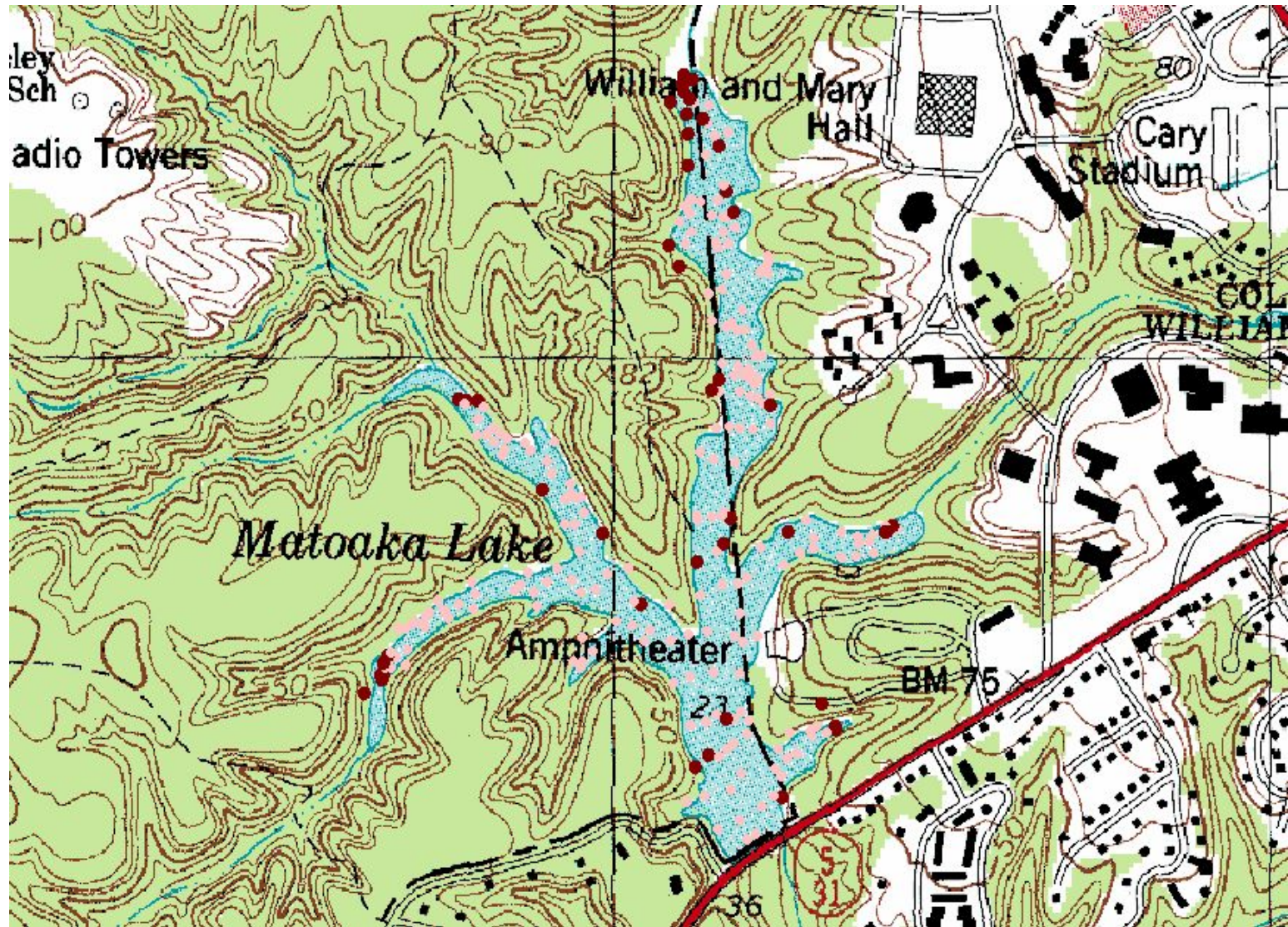
**College of William and Mary**



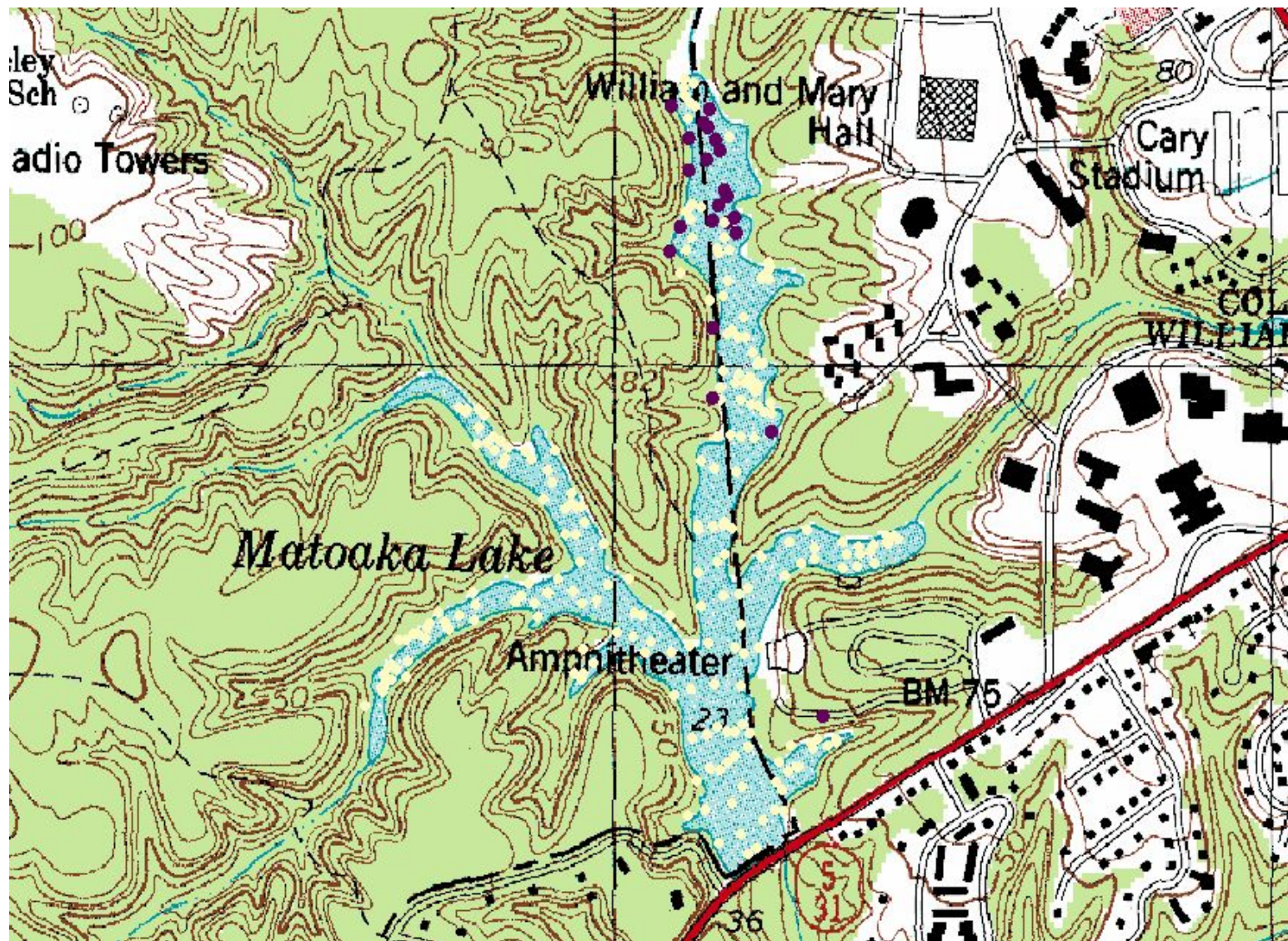
**Bathymetry  
of Lake  
Matoaka,  
spring 2002.  
Depth in  
meters.**



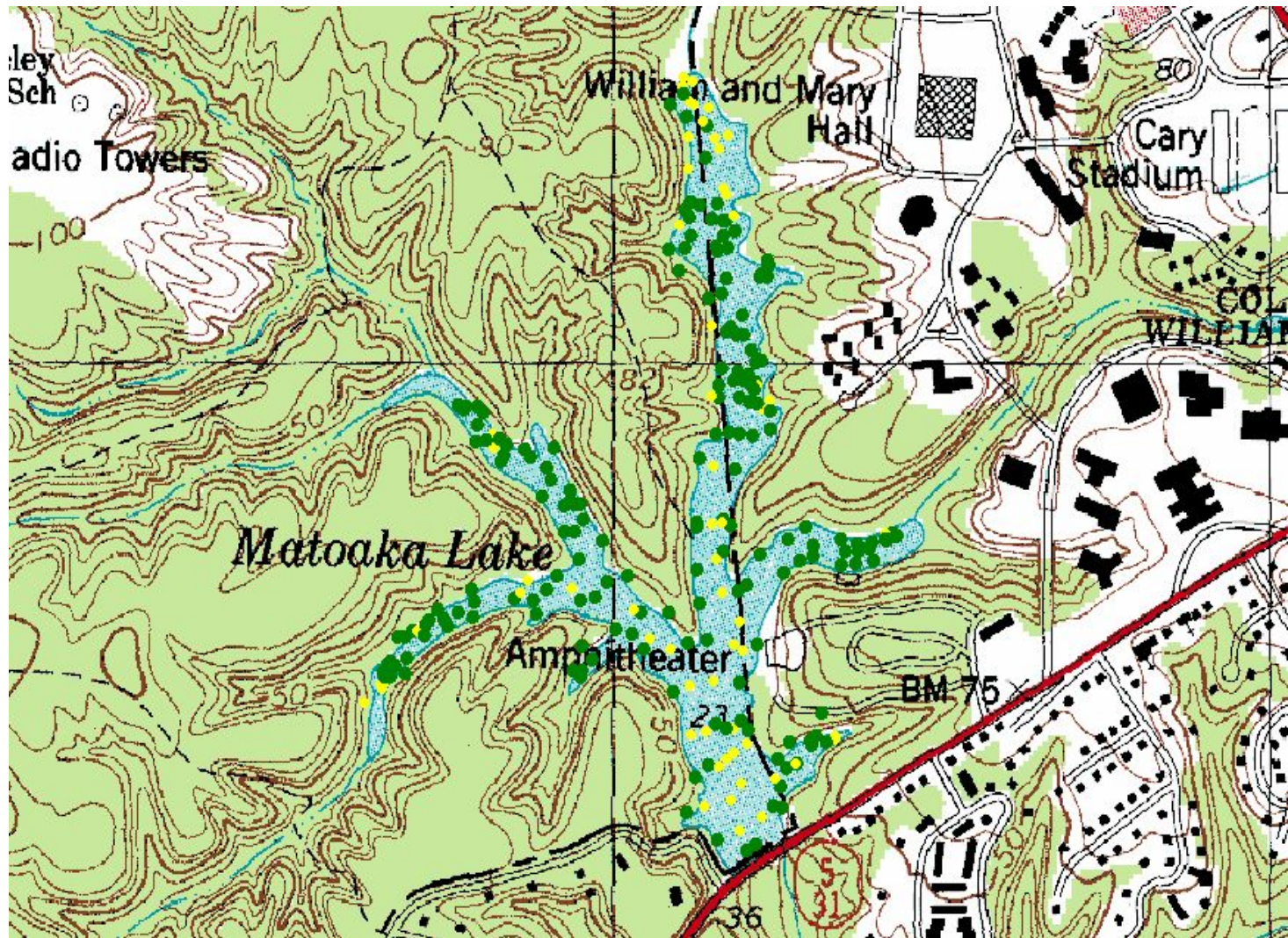
Algae: Yellow points mark locations **without algae** and red points mark those with **algae present**.



***Azolla*, water fern: Pink points mark locations without water fern and red points mark those with water fern present.**



*Ceratophyllum*, Coontail: Light points mark locations without coontail and purple points mark those with coontail present.



*Potamogeton crispus*: Yellow points mark locations **without** *Potamogeton* and green points mark those with *Potamogeton* present.

**This study is the first collection of plant and bathymetry data compiled in a decade. Currently, *Potamogeton crispus*, an invasive species, is the dominant aquatic plant in the lake, having spread dramatically in the last 10 years.**

**Our bathymetry chart documents recent infilling of selected portions of the lake from upland erosion.**

**These data on water depth and plant distributions will be extremely useful to the Keck Laboratory for studies including fish monitoring, turtle behavior, and correlational studies among physical and biological variables within the lake watershed system.**

**Thank you to Dr. Randy Chambers and  
Timothy Russell for research advice and  
technical help.**

**Funding for the research provided by  
the Keck Lab.**