

# Committee on Buildings & Grounds

## Virginia Institute of Marine Science

April 26, 2012





# Virginia Institute of Marine Science

## General Assembly Actions

### 2012-14 Capital Outlay

#### Projects

Maintenance Reserve (Bonds)	\$193,060
-----------------------------	-----------

Consolidated Scientific Research Facility (50% Capital Outlay Planning Fund / 50% VIMS)	\$463,352
--	-----------

#### **Detailed Planning Funds**

New Research Vessel (Bonds)	\$8,050,000
-----------------------------	-------------

**Replace the R/V Bay Eagle**

# Eastern Shore Laboratory Wachapreague, Virginia

Current ESL  
Property Boundary



Image © 2010 Commonwealth of Virginia  
© 2010 Google

©2010 Google

87 m

Imagery Date: Feb 1, 2007

37°36'29.53" N 75°41'12.19" W elev 2 m

Eye alt 304 m



# **Eastern Shore Laboratory Fire Seaside Hall November 18, 2010**



# Seaside Hall Renderings

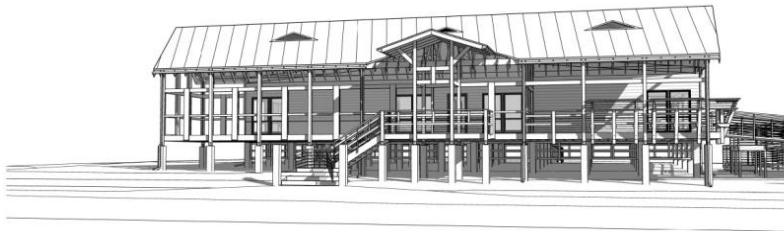
VIA Design Architects  
E.T. Gresham Company, Contractor



view approaching on atlantic street



view from administration building



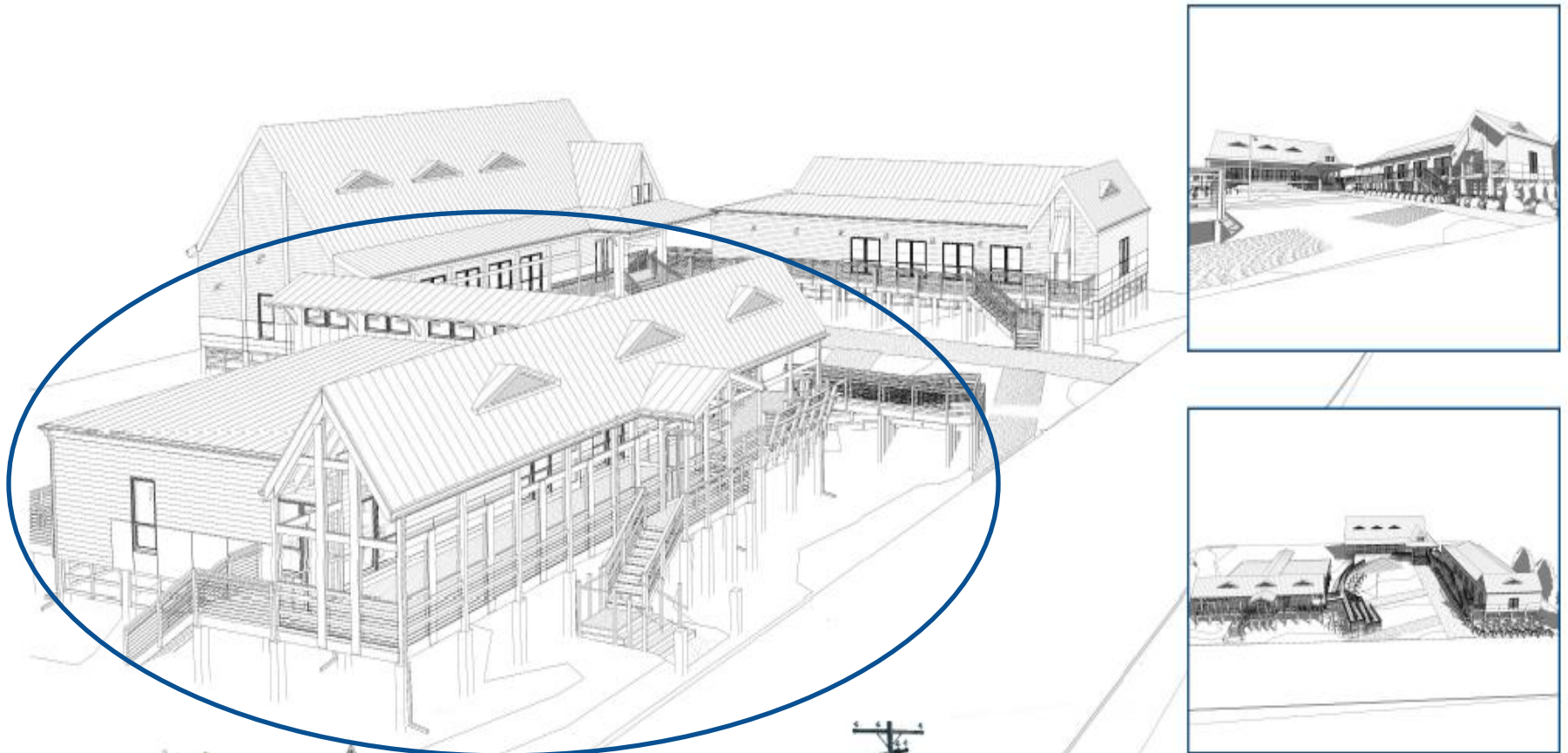
view from seawater lab



view from hatchery

# Seaside Hall Renderings

## Master Plan View





# Seaside Hall Renderings

## Master Plan Additional View





# Seaside Hall Renderings

## Master Plan Additional View





# Seaside Hall Under Construction





A modern, two-story building with a prominent, angular, light-colored concrete or metal facade. The upper level features large, dark-framed windows. The lower level has a series of smaller, rectangular windows. The building is set against a clear blue sky with some light clouds. The foreground is a gravel-covered area.

**Save-the-Date**

# **Eastern Shore Seawater Lab Dedication**

**June 23, 2012 11:00 a.m.**



# Questions?

