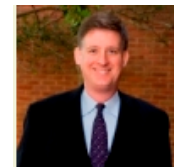
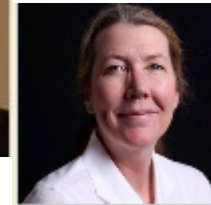
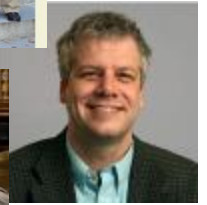




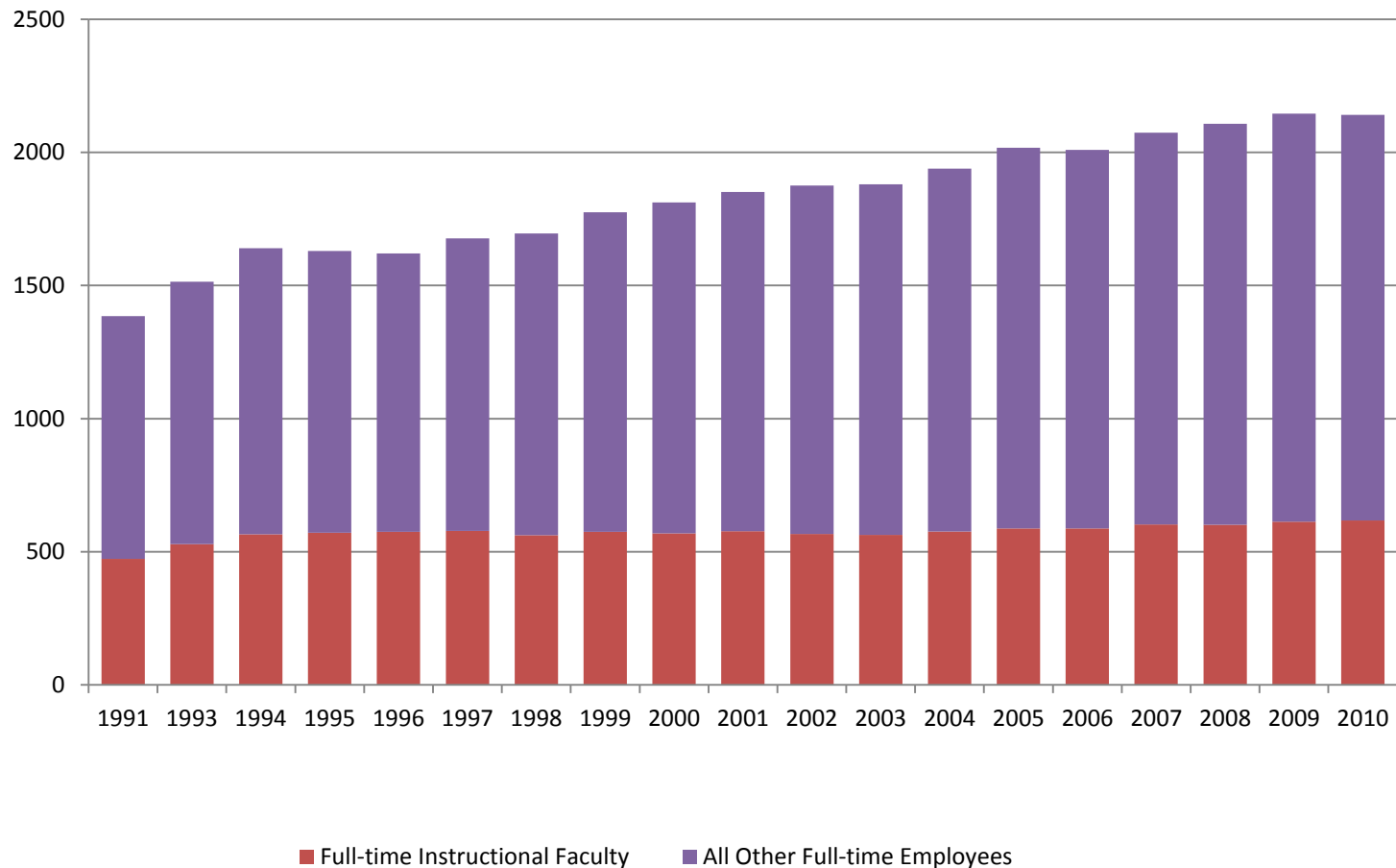
Who Are We? Some Facts About the Faculty



Number and Percent of Faculty and Other Employees, 2010-11

	Number	%
Full-time Tenured and Tenure Eligible	512	19.8%
Full-time Non-Tenure Eligible	106	4.1%
Research and Public Service Faculty	40	1.5%
Part-time (adjunct) Instructional and Research Faculty	173	6.7%
All other employees	1,753	67.8%
Total Full-time and Part-time Employees (excluding Instructional and Research Assistants)	2,584	

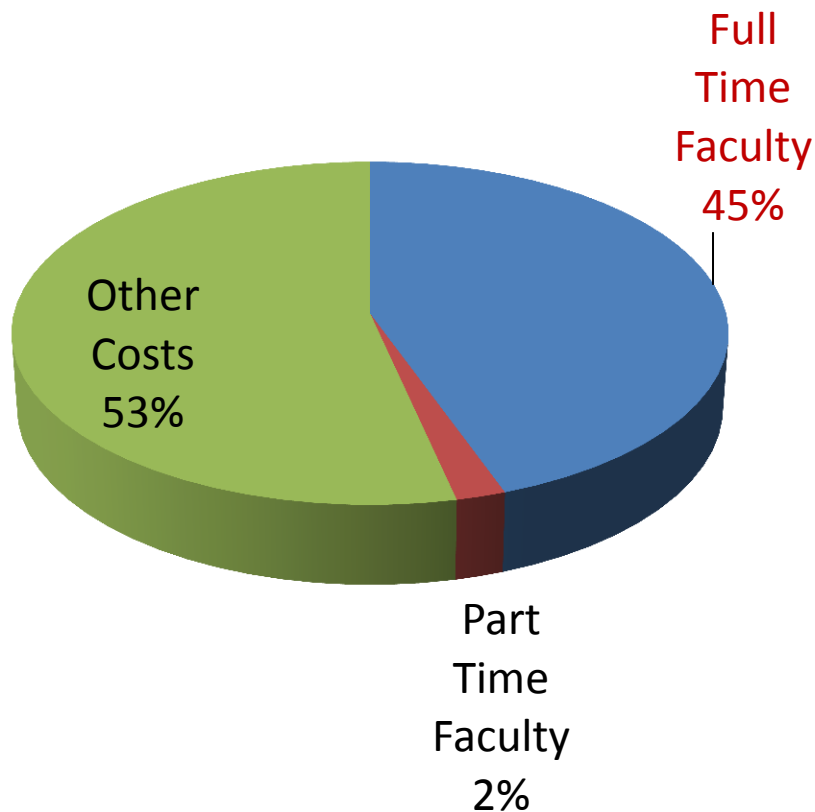
Number of Full-time Faculty (T/TE and NTE) and All Other Employees, 1991-2010



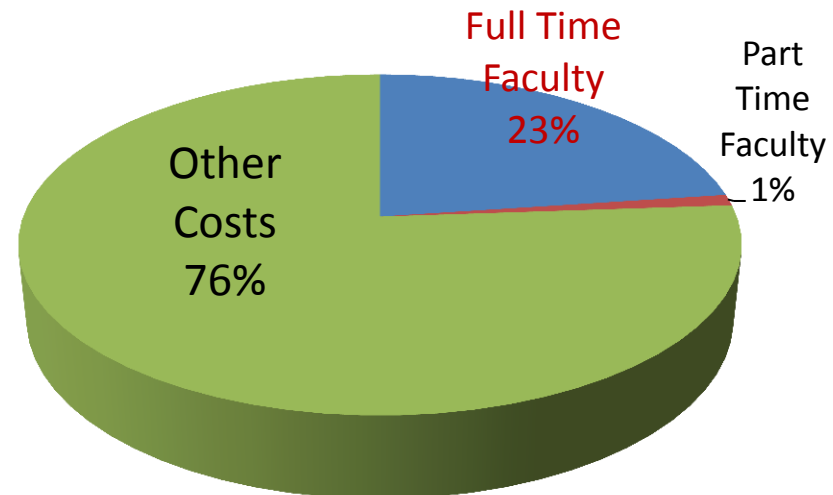
Over the period, Full-time faculty increased by 31% while all other Full-time employees increased by 67%.

Salaries and Benefits of Full-time and Part-time Faculty, FY '12

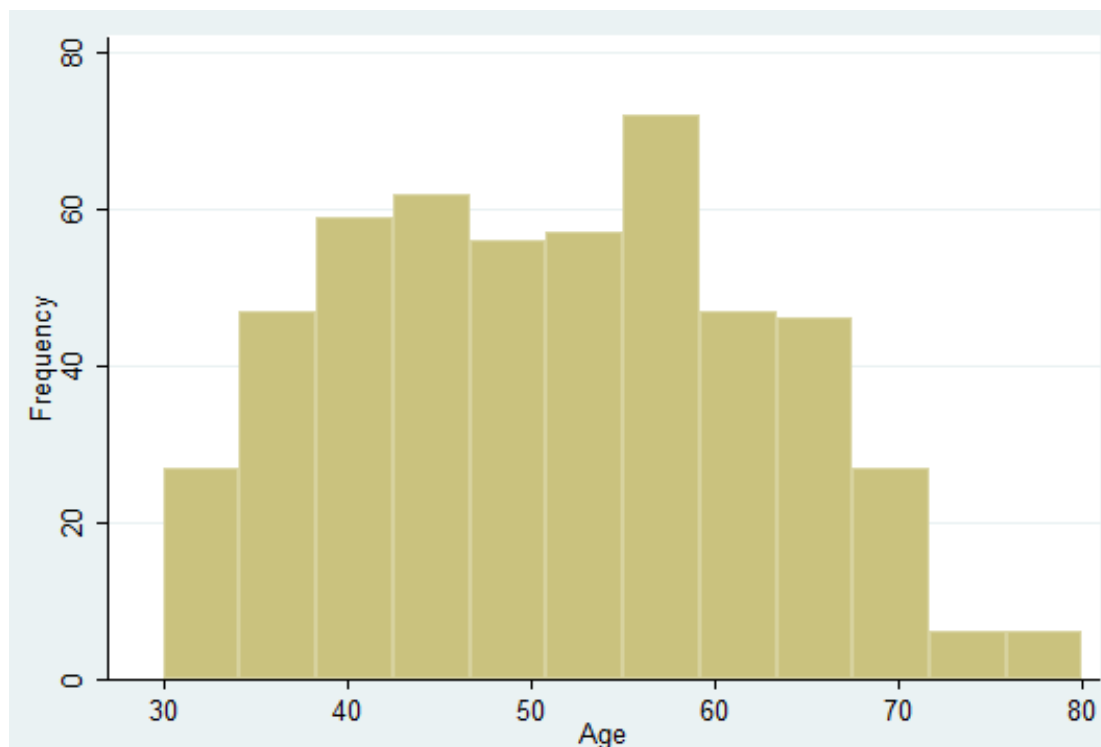
As percent of E&G



As percent of Total Operating Costs



Age Distribution of Tenured and Tenure-Eligible (T/TE) Faculty



mean age = 51

132 faculty members (26%) of T/TE faculty are 60 or older.

73 faculty members (14%) of T/TE faculty are 65 or older.

Potential Problem or Opportunity?

More than a quarter of the faculty have been hired in the past 5 years.

Gender and Ethnic Breakdown of all
512 T/TE Faculty

	Number	Percent
Female	181	35%
Male	331	65%
White Non-Hispanic	436	85%
Asian/Pacific Islander	34	7%
Black Non-Hispanic	19	4%
Hispanic	8	1.5%
Native American	1	.2%
Multi-ethnic	1	.2%
Unknown	13	2.5%

Gender and Ethnic Breakdown of 131
T/TE Faculty Hired in Last Five Years
(26% of the Faculty)

	Number	Percent
Female	50	38%
Male	81	62%
White Non-Hispanic	98	81%
Asian/Pacific Islander	12	10%
Black Non-Hispanic	7	6%
Hispanic	3	2%
Multi-ethnic	1	1%
		100%
Unknown	10	

With normal retirements and faculty leaving for other reasons, we can anticipate hiring another quarter of the faculty in the next five years. (51% of the faculty have been hired within the past twelve years.)