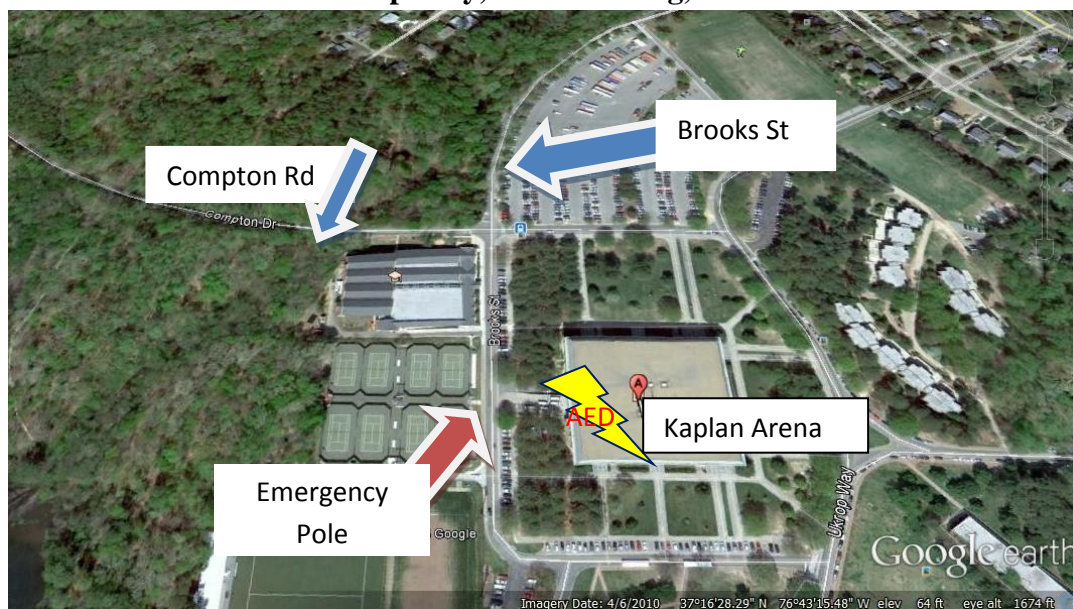


**Emergency Action Plan
Kaplan Arena
751 Ukrop Way, Williamsburg, VA 23185**



Call EMS in any life-threatening situation:

- Unconsciousness
- Uncontrolled bleeding
- Difficulty breathing
- Any situation beyond your scope

Role of the First Responder:

- Immediate care of injured/ill student-athlete
- Activation of emergency medical system (EMS)
- Retrieval of medical equipment
- Direct EMS to the scene

Emergency Personnel

During intercollegiate competition, Kaplan Arena is covered by a staff athletic trainer. In addition, at least one coach on each W&M team is first aid, CPR, and AED certified.

Important Phone Numbers:

- Kaplan Arena Athletic Training Facility: 757-221-3407
- Campus Police
 - From a campus phone: 911
 - From cell phone: 757-221-4596
- Sentara Williamsburg Regional Medical Center Emergency Room: 757-984-7111
- When making a call using a campus phone, dial “9-1-(area code)” before dialing the other phone numbers

Nearest Hospital:

- Sentara Williamsburg Regional Medical Center Emergency Room
- 100 Sentara Circle, Williamsburg, VA 23188

Directions to Hospital:

1. Right onto Brooks and proceed to Compton
2. Left onto Compton; proceed to stop sign
3. Left onto Monticello; proceed through 3 stop lights
4. Merge right on Rt 199 West; proceed to right exit at Rochambeau/Mooretown Rd
5. Follow Mooretown Rd to 2nd stop light
6. Right onto Sentara Circle; follow circle and signs to ER.

Medical Equipment Available:

- The following emergency equipment is located in the athletic training facility at Kaplan Arena: Athletic training kit, splinting kit, spine board, and additional emergency equipment
- AED is located in the athletic training facility located on the 1st floor of Kaplan Arena at the West face.

Kaplan Arena Emergency Procedures:

- Second floor: In the event of an emergency whereby the 2nd floor of the facility is the best method of evacuation, spectators should proceed to the stairs in each corner of the arena, or down the ramp at the rear of the building (West-facing).
 - AED is located at the western stairwell.
- Third floor: In the event of an emergency whereby the 3rd floor of the facility is the best method of evacuation, spectators should proceed out the nearest door toward the parking lots.
 - AEDs are located at the North and South faces of the building, on the concourse by the concession stands.