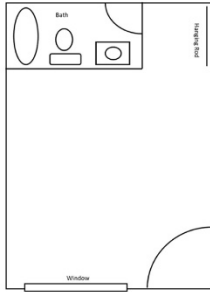


# Richmond Hall Second-Floor Rooms

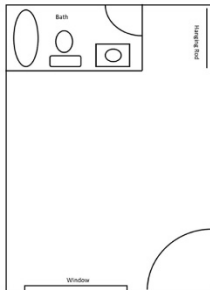
## Richmond 200



To the left is an example of a typical room, but all rooms vary slightly

Occupancy: 3  
Bed Size: Twin XL  
Room Size: Approximately 14' x 30'

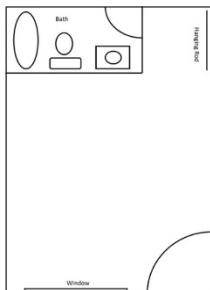
## Richmond 201, 202, 203, 204, 205, 206, 207, 208, 209, 210, 211, 212, 213, 214, 215, 216, 217, 218, 219, 221, 222, 225, 226, 227, 228, 229, 230, 231, 232, 233, 234, 235, 236, 237, 238, 239, 240, 241, 243, 244, 245, 246



To the left is an example of a typical room, but all rooms vary slightly

Occupancy: 2  
Bed Size: Full  
Room Size: Approximately 13'6 "x16'

## Richmond 220, 223, 242



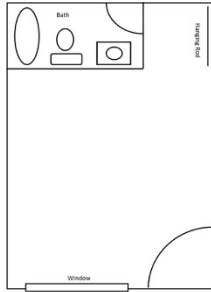
To the left is an example of a typical room, but all rooms vary slightly

Occupancy: 2  
Bed Size: Twin XL  
Room Size: Approximately 13'6 "x16,'

Floor plans are provided to demonstrate differences between room types. Individual rooms vary. All dimensions and square footage are approximate and should not be relied upon as representation, express or implied, of your actual assigned room.

# Richmond Hall Second-Floor Rooms

Richmond 224, 247, 248, 249, 250, 251, 254, 255, 256, 257, 258



To the left is an example of a typical room, but all rooms vary slightly

Occupancy: 1

Bed Size: Full

Room Size: Approximately 11'6 "x16'

Floor plans are provided to demonstrate differences between room types. Individual rooms vary. All dimensions and square footage are approximate and should not be relied upon as representation, express or implied, of your actual assigned room.