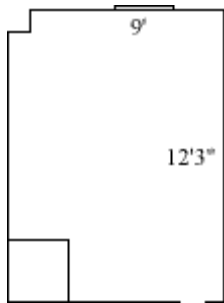


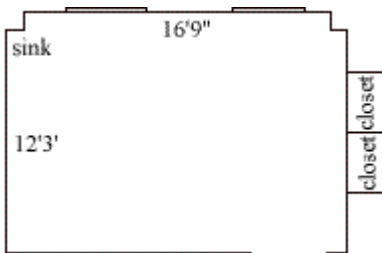
Hunt Hall Second-Floor Rooms

Hunt 200



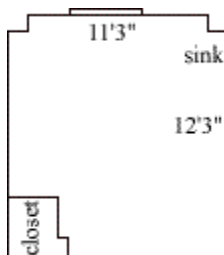
Room occupancy	1
Ceiling height	9'11"
# of outlets	3 (100) 5 (200)
Sink	yes
Bathroom Facilities	hall
Built-in furniture	no
Medicine Cabinet	yes
Closet size	2'8"(d) x 2'7"(w)
Window size	6'1" (h) x 3'6"(w)
Air-conditioned	yes

Hunt 201



Room occupancy	2
Ceiling height	9'7"
# of outlets	5
Sink	yes
Bathroom Facilities	hall
Built-in furniture	no
Medicine Cabinet	yes
Closet size	2'6"(d) x 2'9"(w)
Window size	6'0" (h) x 3'6"(w) 4'4" (h) x 3'6" (w)
Air-conditioned	yes

Hunt 202, 211

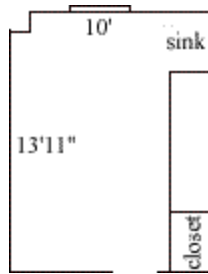


Room occupancy	1
Ceiling height	9'7"
# of outlets	5 (202) 7 (211)
Sink	yes
Bathroom Facilities	hall
Built-in furniture	no
Medicine Cabinet	yes
Closet size	2'6"(d) x 3'5"(w)
Window size	6' (h) x 3'6"(w)
Air-conditioned	yes

Floor plans are provided to demonstrate differences between room types. Individual rooms vary. All dimensions and square footage are approximate and should not be relied upon as representation, express or implied, of your actual assigned room.

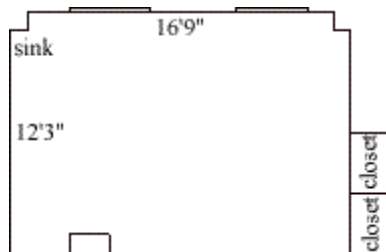
Hunt Hall Second-Floor Rooms

Hunt 203



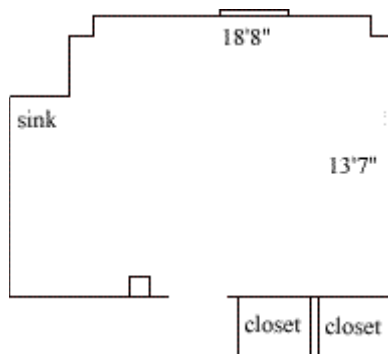
Room occupancy	1
Ceiling height	9'7"
# of outlets	5
Sink	yes
Bathroom Facilities	hall
Built-in furniture	no
Medicine Cabinet	yes
Closet size	2'3"(d) x 2'9"(w)
Window size	6'0" (h) x 3'6"(w)
Air-conditioned	yes

Hunt 204



Room occupancy	2
Ceiling height	9'7"
# of outlets	4
Sink	yes
Bathroom Facilities	hall
Built-in furniture	no
Medicine Cabinet	yes
Closet size	2'6"(d) x 2'9"(w)
Window size	6' (h) x 3'6"(w) 4'4" (h) x 3'6" (w)
Air-conditioned	yes

Hunt 205

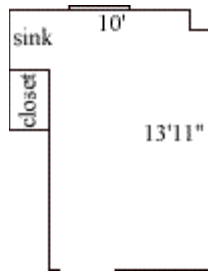


Room occupancy	2
Ceiling height	9'7"
# of outlets	7
Sink	yes
Bathroom Facilities	hall
Built-in furniture	no
Medicine Cabinet	yes
Closet size	2'6"(d) x 3'5"(w) 1 wardrobe
Window size	6' (h) x 3'6"(w)
Air-conditioned	yes

Floor plans are provided to demonstrate differences between room types. Individual rooms vary. All dimensions and square footage are approximate and should not be relied upon as representation, express or implied, of your actual assigned room.

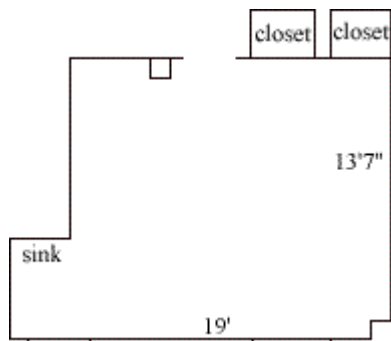
Hunt Hall Second-Floor Rooms

Hunt 206



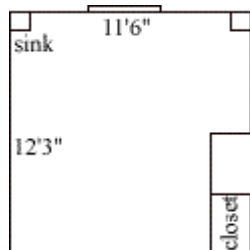
Room occupancy	1
Ceiling height	9'7"
# of outlets	5
Sink	yes
Bathroom Facilities	hall
Built-in furniture	no
Medicine Cabinet	yes
Closet size	2'3"(d) x 2'9"(w)
Window size	6' (h) x 3'6"(w)
Air-conditioned	yes

Hunt 207



Room occupancy	2
Ceiling height	9'7"
# of outlets	5
Sink	yes
Bathroom Facilities	hall
Built-in furniture	no
Medicine Cabinet	yes
Closet size	2'9"(d) x 3'1"(w) 1 wardrobe
Window size	6' (h) x 3'6"(w)
Air-conditioned	yes

Hunt 208

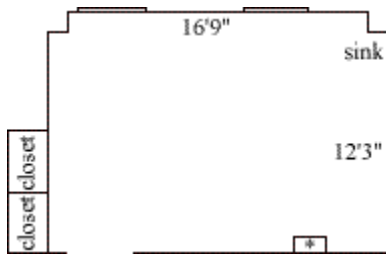


Room occupancy	1
Ceiling height	9'7"
# of outlets	5
Sink	yes
Bathroom Facilities	hall
Built-in furniture	no
Medicine Cabinet	yes
Closet size	2'6"(d) x 3'6"(w)
Window size	6' (h) x 3'6"(w)
Air-conditioned	yes

Floor plans are provided to demonstrate differences between room types. Individual rooms vary. All dimensions and square footage are approximate and should not be relied upon as representation, express or implied, of your actual assigned room.

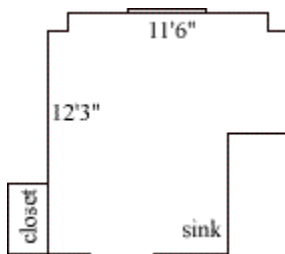
Hunt Hall Second-Floor Rooms

Hunt 209, 212



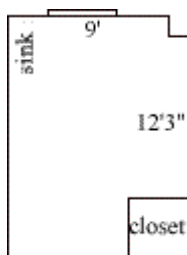
* only in 209	
Room occupancy	2
Ceiling height	9'7"
# of outlets	5 (209) 7 (212)
Sink	yes
Bathroom Facilities	hall
Built-in furniture	no
Medicine Cabinet	yes
Closet size	2'6"(d) x 2'9"(w)
Window size	6' (h) x 3'6"(w) 4'4" (h) x 3'6" (w)
Air-conditioned	yes

Hunt 210



Room occupancy	1
Ceiling height	9'7"
# of outlets	3
Sink	yes
Bathroom Facilities	hall
Built-in furniture	no
Medicine Cabinet	yes
Closet size	2'6"(d) x 3"6"(w)
Window size	6' (h) x 3'6"(w)
Air-conditioned	yes

Hunt 214



Room occupancy	1
Ceiling height	9'11"
# of outlets	3 (114) 6 (214)
Sink	yes
Bathroom Facilities	hall
Built-in furniture	no
Medicine Cabinet	yes
Closet size	3'(d) x 2'7"(w)
Window size	6'1" (h) x 3'6"(w)
Air-conditioned	yes

Floor plans are provided to demonstrate differences between room types. Individual rooms vary. All dimensions and square footage are approximate and should not be relied upon as representation, express or implied, of your actual assigned room.