

William & Mary Fact Book

Admission

Updated Nov., 2023

- I. First-time Freshmen Applied, Admitted, and Enrolled
- II. First-time Freshmen Admission, Yield Rate
- III. First-time Freshmen SAT Profile
- IV. Transfer Student Applied, Admitted, and Enrolled
- V. Transfer Student Admission Rate & Yield Rate
- VI. Graduate Student Admission

I. First-Time Freshmen Applied, Admitted, and Enrolled

Residency Gender

Chart ADM 1.1 First-Time Freshmen Applied, Admitted, Enrolled, 2010-2023

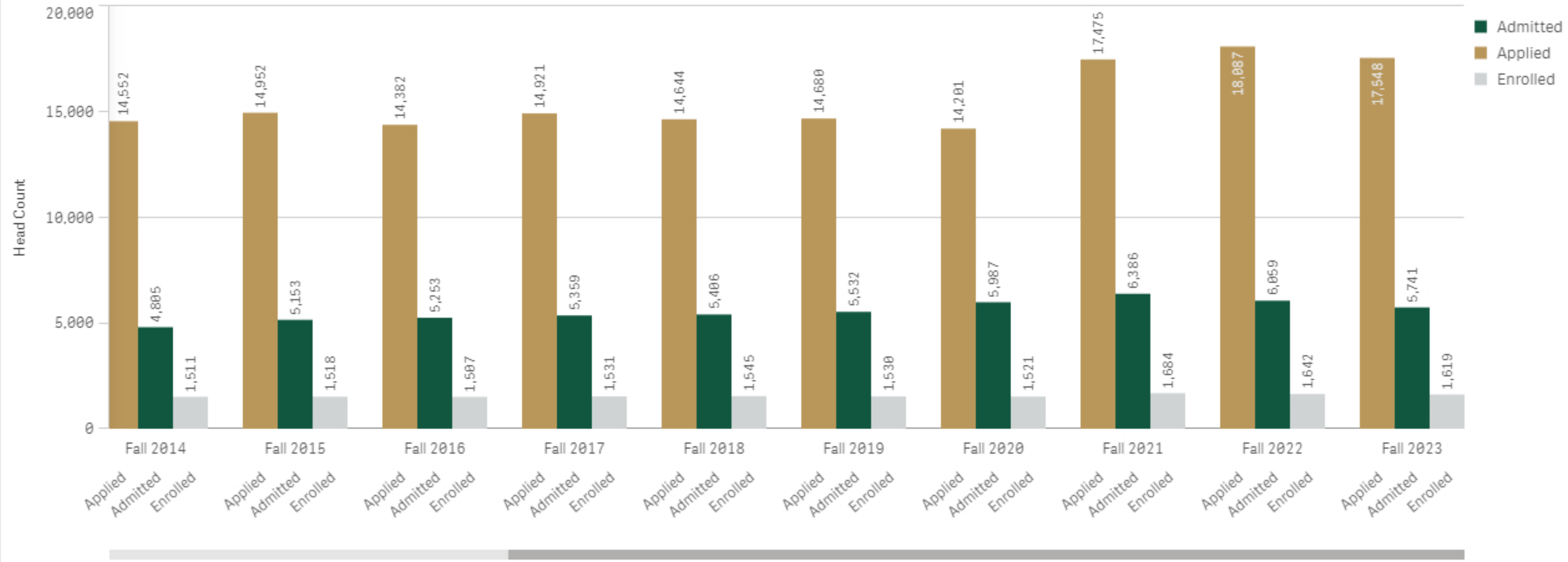


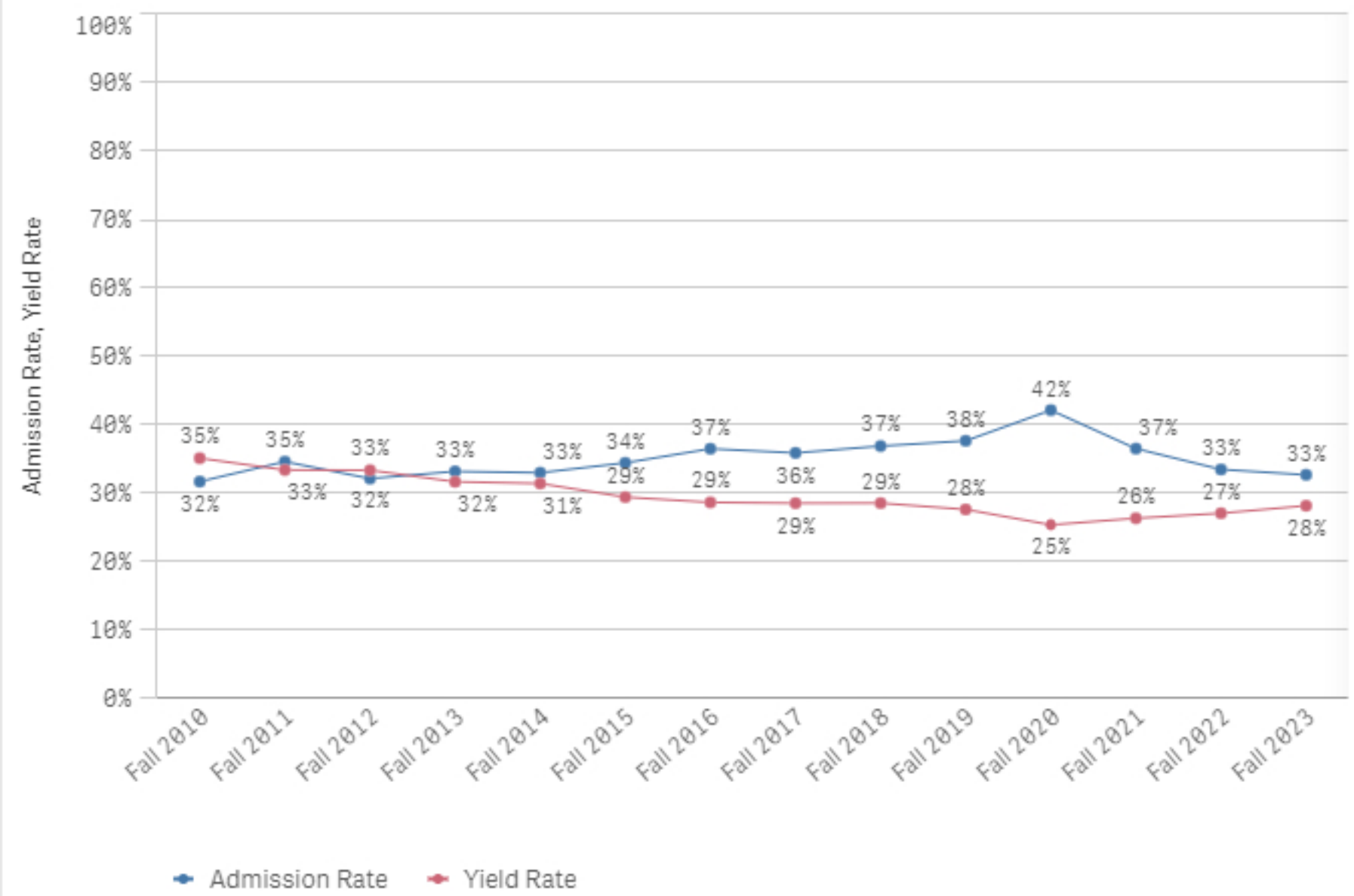
Table ADM 1.1 First-Time Freshmen Applied, Admitted, Enrolled, 2010-2023

	Fall 2023			Fall 2022			Fall 2021			Fall 2020			Fall 2019	
	Totals	In-state	Out-of-state	Totals	In-state	Out-of-state	Totals	In-state	Out-of-state	Totals	In-state	Out-of-state	Totals	In-state
	Applied	17,548	7,157	10,391	18,087	7,093	10,994	17,475	7,094	10,381	14,201	6,031	8,170	14,680
Female	10,873	4,420	6,453	11,246	4,451	6,795	10,845	4,440	6,405	8,674	3,644	5,030	9,013	3,785
Male	6,675	2,737	3,938	6,841	2,642	4,199	6,630	2,654	3,976	5,527	2,387	3,140	5,667	2,369
Admitted	5,741	2,811	2,930	6,059	2,963	3,096	6,386	3,115	3,271	5,987	3,052	2,935	5,532	2,885
Female	3,269	1,652	1,617	3,398	1,762	1,636	3,620	1,849	1,771	3,441	1,791	1,650	3,105	1,675
Male	2,472	1,159	1,313	2,661	1,201	1,460	2,766	1,266	1,500	2,546	1,261	1,285	2,427	1,210
Enrolled	1,619	1,005	614	1,642	982	660	1,684	1,073	611	1,521	1,020	501	1,530	947
Female	957	600	357	917	587	330	968	617	351	926	624	302	902	563
Male	662	405	257	725	395	330	716	456	260	595	396	199	628	384

II. First-time Freshmen Admission, Yield Rate

Residency Gender

Chart ADM 2.1 First-Time Freshmen Admission & Yield Rate, 2010-2023



Notes: Admission Rate = Admitted / Applied. Yield Rate = Enrolled / Admitted.

Table ADM 2.1 First-Time Freshmen Admission & Yield Rate, 2010-2023

Academic Period	Values	
	Admission Rate	Yield Rate
Fall 2023	33%	28%
Fall 2022	33%	27%
Fall 2021	37%	26%
Fall 2020	42%	25%
Fall 2019	38%	28%
Fall 2018	37%	29%
Fall 2017	36%	29%
Fall 2016	37%	29%
Fall 2015	34%	29%
Fall 2014	33%	31%
Fall 2013	33%	32%
Fall 2012	32%	33%
Fall 2011	35%	33%
Fall 2010	32%	35%

Notes: Admission Rate = Admitted / Applied. Yield Rate = Enrolled / Admitted.

III. First-time Freshmen SAT Profile

Residency Gender

***Since 2017, William & Mary reports New or converted New SAT Score**

Chart ADM 3.2 First-Time Freshmen SAT Reading

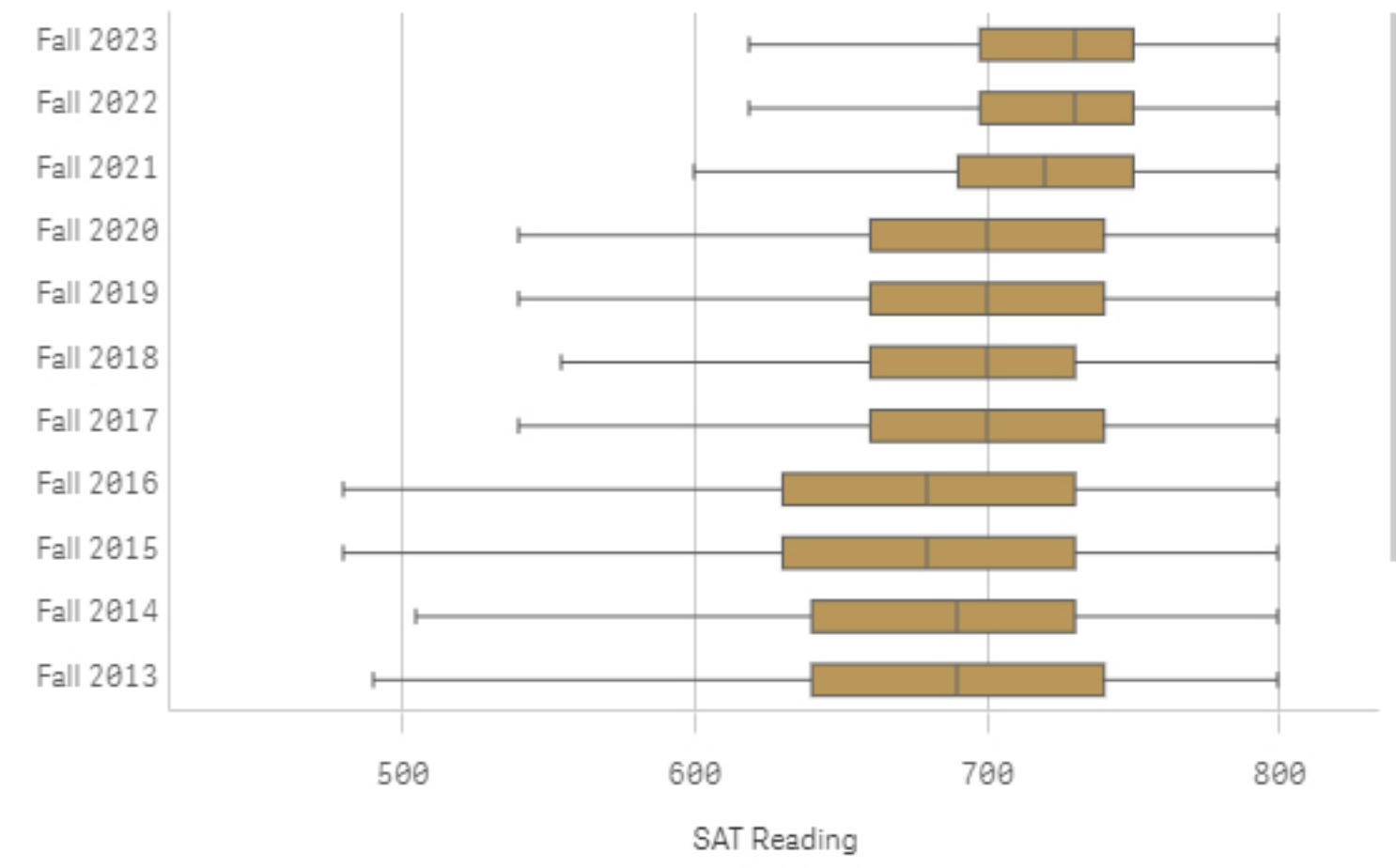


Chart ADM 3.3 First-Time Freshmen SAT Math

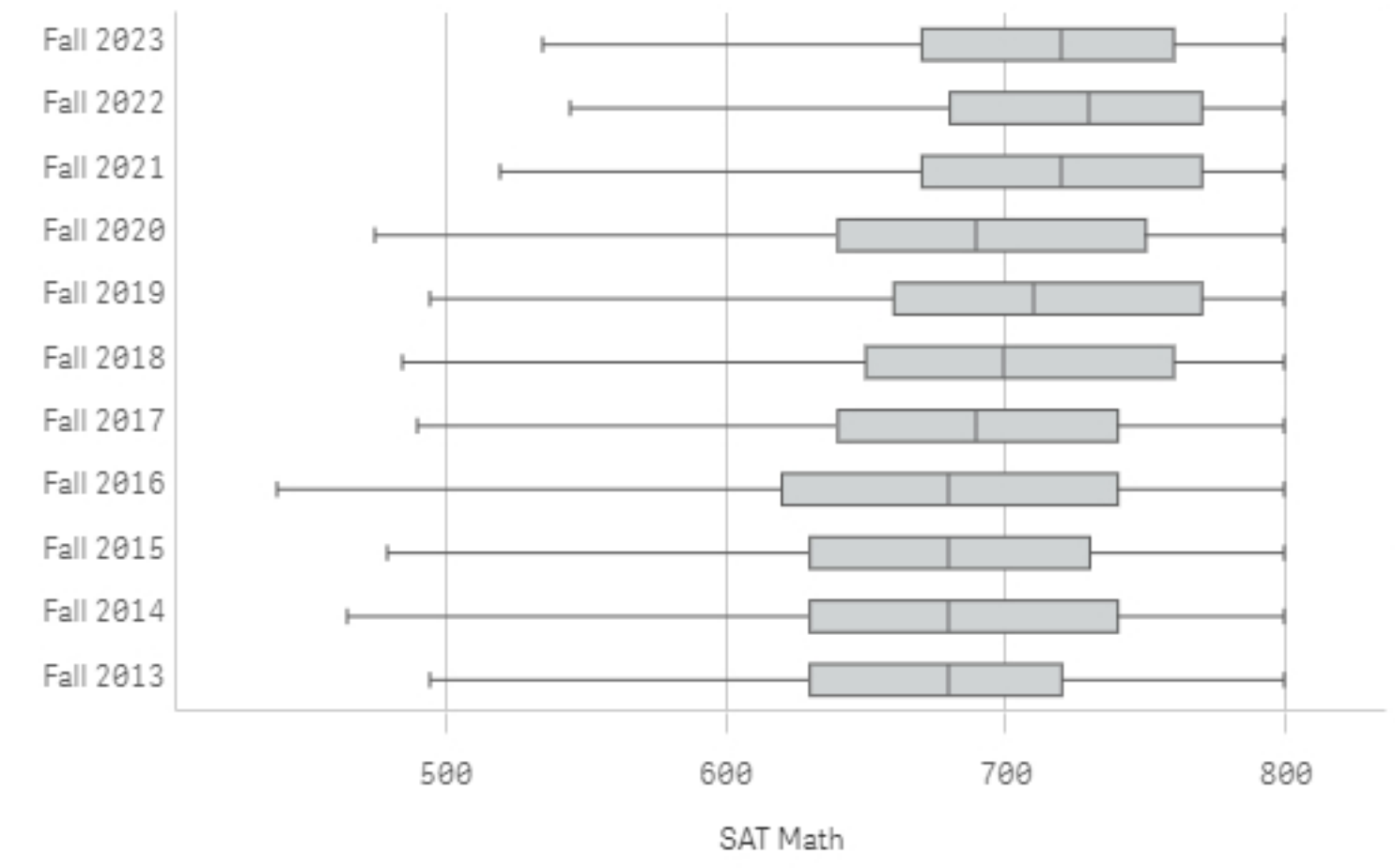


Table ADM 3.1 First-Time Freshmen SAT T...

Academic Period	Q	SAT Total Bottom Quartile	SAT Total Median	SAT Total Top Quartile
Fall 2023		1,368	1,450	1,510
Fall 2022		1,378	1,460	1,520
Fall 2021		1,360	1,440	1,520
Fall 2020		1,300	1,390	1,490
Fall 2019		1,320	1,410	1,510
Fall 2018		1,310	1,400	1,490
Fall 2017		1,300	1,390	1,480
Fall 2016		1,250	1,360	1,470
Fall 2015		1,260	1,360	1,460
Fall 2014		1,270	1,370	1,470
Fall 2013		1,270	1,370	1,460
Fall 2012		1,250	1,360	1,460
Fall 2011		1,240	1,350	1,450
Fall 2010		1,255	1,350	1,440

Table ADM 3. 2 First-Time Freshmen SAT ...

Academic Period	Q	Reading Bottom Quartile	Reading Median	Reading Top Quartile
Fall 2023		698	730	750
Fall 2022		698	730	750
Fall 2021		690	720	750
Fall 2020		660	700	740
Fall 2019		660	700	740
Fall 2018		660	700	730
Fall 2017		660	700	740
Fall 2016		630	680	730
Fall 2015		630	680	730
Fall 2014		640	690	730
Fall 2013		640	690	740
Fall 2012		630	690	740
Fall 2011		620	680	730
Fall 2010		635	680	730

Table ADM 3. 3 First-Time Freshmen SAT Math Profile

Academic Period	Q	Math Bottom Quartile	Math Median	Math Top Quartile
Fall 2023		670	720	760
Fall 2022		680	730	770
Fall 2021		670	720	770
Fall 2020		640	690	750
Fall 2019		660	710	770
Fall 2018		650	700	760
Fall 2017		640	690	740
Fall 2016		620	680	740
Fall 2015		630	680	730
Fall 2014		630	680	740
Fall 2013		630	680	720
Fall 2012		620	670	720
Fall 2011		620	670	720
Fall 2010		620	670	710

*The calculation is consistent with CDS method

IV. Transfer Students Applied, Admitted, and Enrolled

Residency Gender For more information about transfer students, please see Transfer Student Fact Book.

Chart ADM 4.1 Transfer Students Applied, Admitted, and Enrolled, 2010-2023

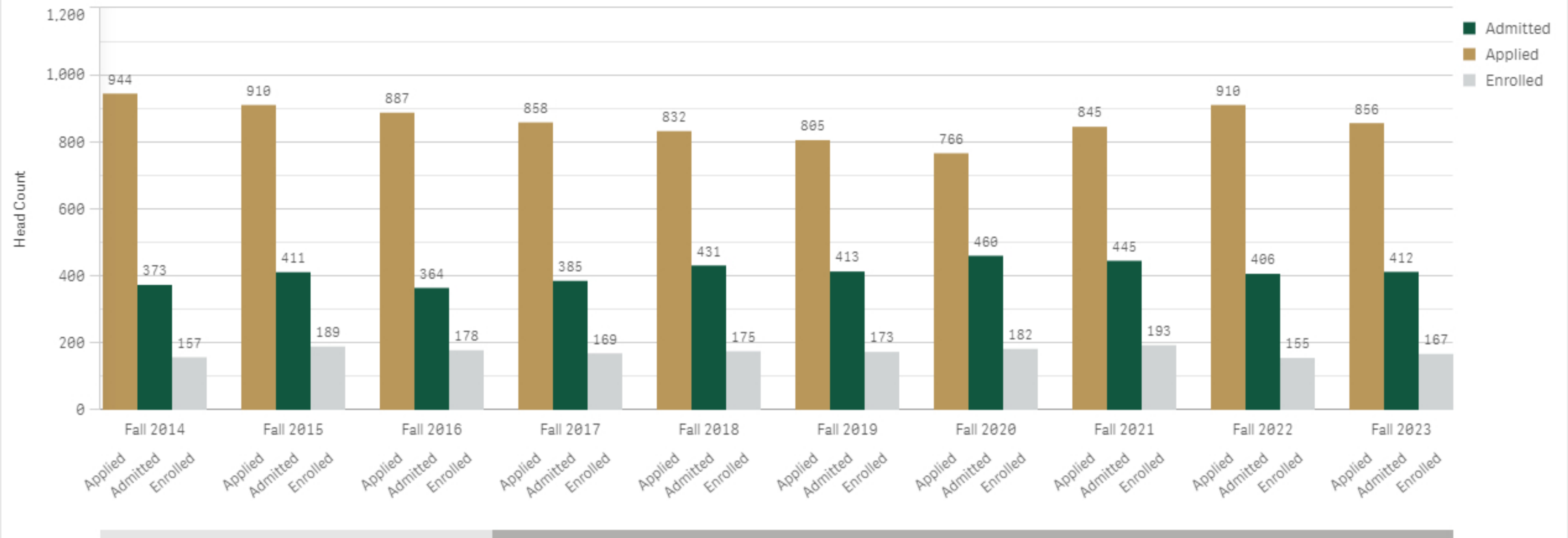


Table ADM 4.1 Transfer Students Applied, Admitted, and Enrolled, 2010-2023

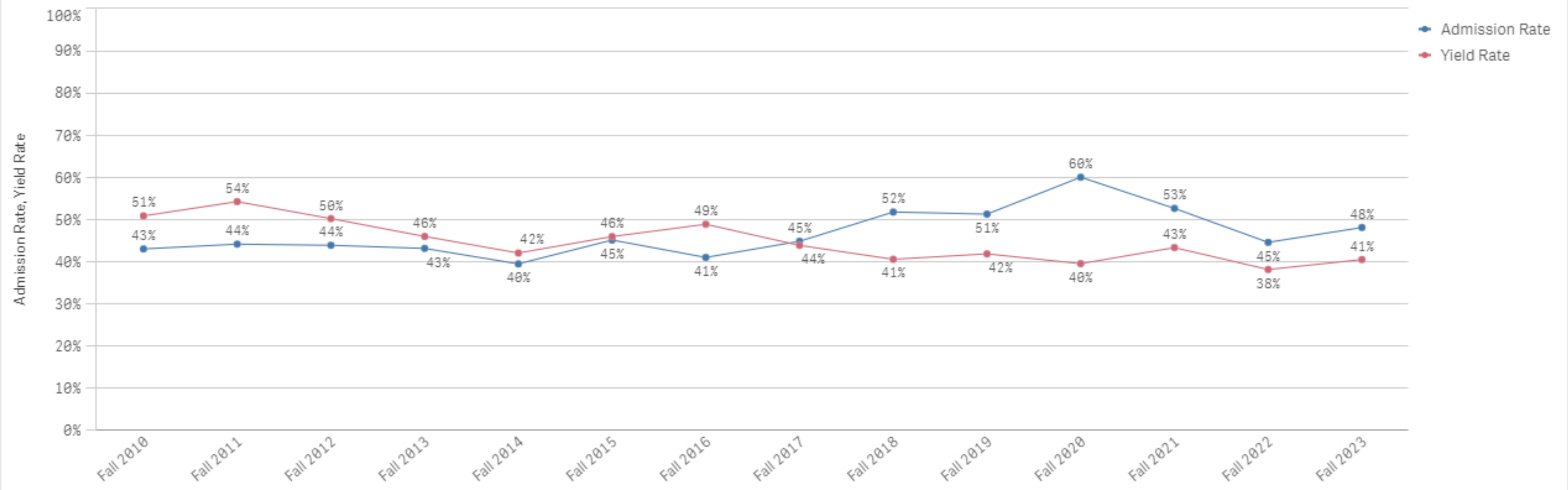
	Application Status																					Academic Period			Residency			Gender		
	Fall 2023			Fall 2022			Fall 2021			Fall 2020			Fall 2019			Fall 2018			Fall 2017			Fall 2016								
	Totals	In-state	Out-of-state	Totals	In-state	Out-of-state	Totals	In-state	Out-of-state	Totals	In-state	Out-of-state	Totals	In-state	Out-of-state	Totals	In-state	Out-of-state	Totals	In-state	Out-of-state	Totals								
Applied	856	468	388	918	487	423	845	489	356	766	401	365	805	425	380	832	424	408	858	434	424	887								
Female	476	263	213	508	280	228	465	267	198	428	224	204	407	212	195	447	222	225	452	225	227	491								
Male	380	205	175	401	206	195	380	222	158	338	177	161	398	213	185	385	202	183	406	209	197	396								
Unreported/Unknown	-	-	-	*	*	-	-	-	-	-	-	-	-	-	-	-	-	-	-	-	-	-								
Admitted	412	250	162	406	253	153	445	287	158	460	270	190	413	256	157	431	250	181	385	236	149	364								
Female	245	152	93	218	146	72	261	160	101	263	151	112	218	136	82	248	137	111	210	132	78	221								
Male	167	98	69	187	106	81	184	127	57	197	119	78	195	120	75	183	113	70	175	104	71	143								
Unreported/Unknown	-	-	-	*	*	-	-	-	-	-	-	-	-	-	-	-	-	-	-	-	-	-								
Enrolled	167	125	42	155	113	42	193	156	37	182	151	31	173	133	40	175	125	50	169	129	40	178								
Female	105	79	26	85	67	18	112	92	20	105	82	23	97	76	21	98	70	28	99	77	22	104								
Male	62	46	16	69	45	24	81	64	17	77	69	8	76	57	19	77	55	22	70	52	18	74								
Unreported/Unknown	-	-	-	*	*	-	-	-	-	-	-	-	-	-	-	-	-	-	-	-	-	-								

Cell values less than 5 will be displayed as an asterisk "**"

V. Transfer Student Admission & Yield Rate

Residency Gender For more information about transfer students, please see Transfer Student Fact Book.

Chart ADM 5.1 Transfer Student Admission & Yield Rate , 2010-2023



Notes: Admission Rate = Admitted / Applied. Yield Rate = Enrolled / Admitted.

Table AMD 5.2 Transfer Student Admission & Yield Rate 2010-2023

Values	Academic Period													
	Fall 2023	Fall 2022	Fall 2021	Fall 2020	Fall 2019	Fall 2018	Fall 2017	Fall 2016	Fall 2015	Fall 2014	Fall 2013	Fall 2012	Fall 2011	Fall 2010
Admission Rate	48%	45%	53%	60%	51%	52%	45%	41%	45%	40%	43%	44%	44%	43%
Yield Rate	41%	38%	43%	40%	42%	41%	44%	49%	46%	42%	46%	50%	54%	51%

Notes: Admission Rate = Admitted / Applied. Yield Rate = Enrolled / Admitted.

Chart ADM 6.1 Graduate Students Applied

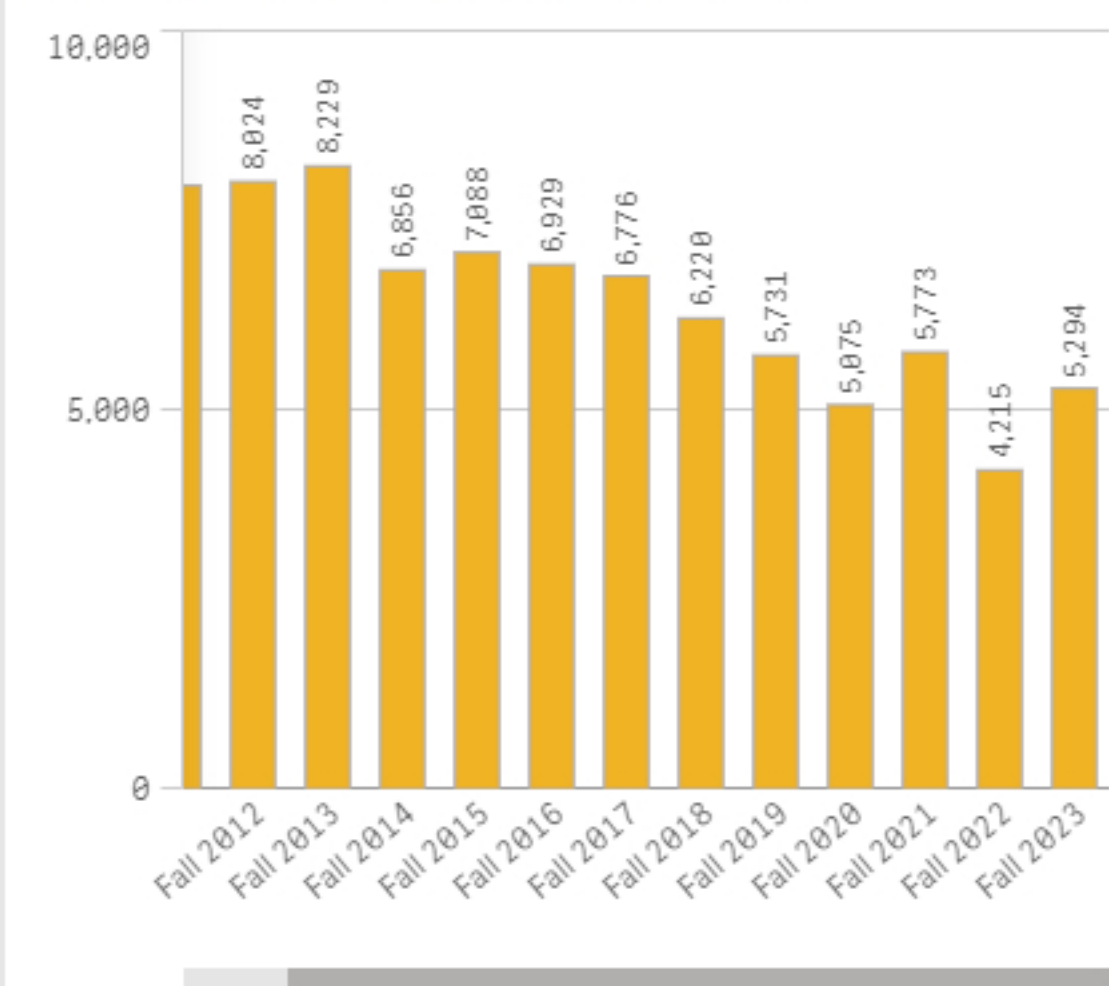


Chart ADM 6.2 Graduate Students Admitted

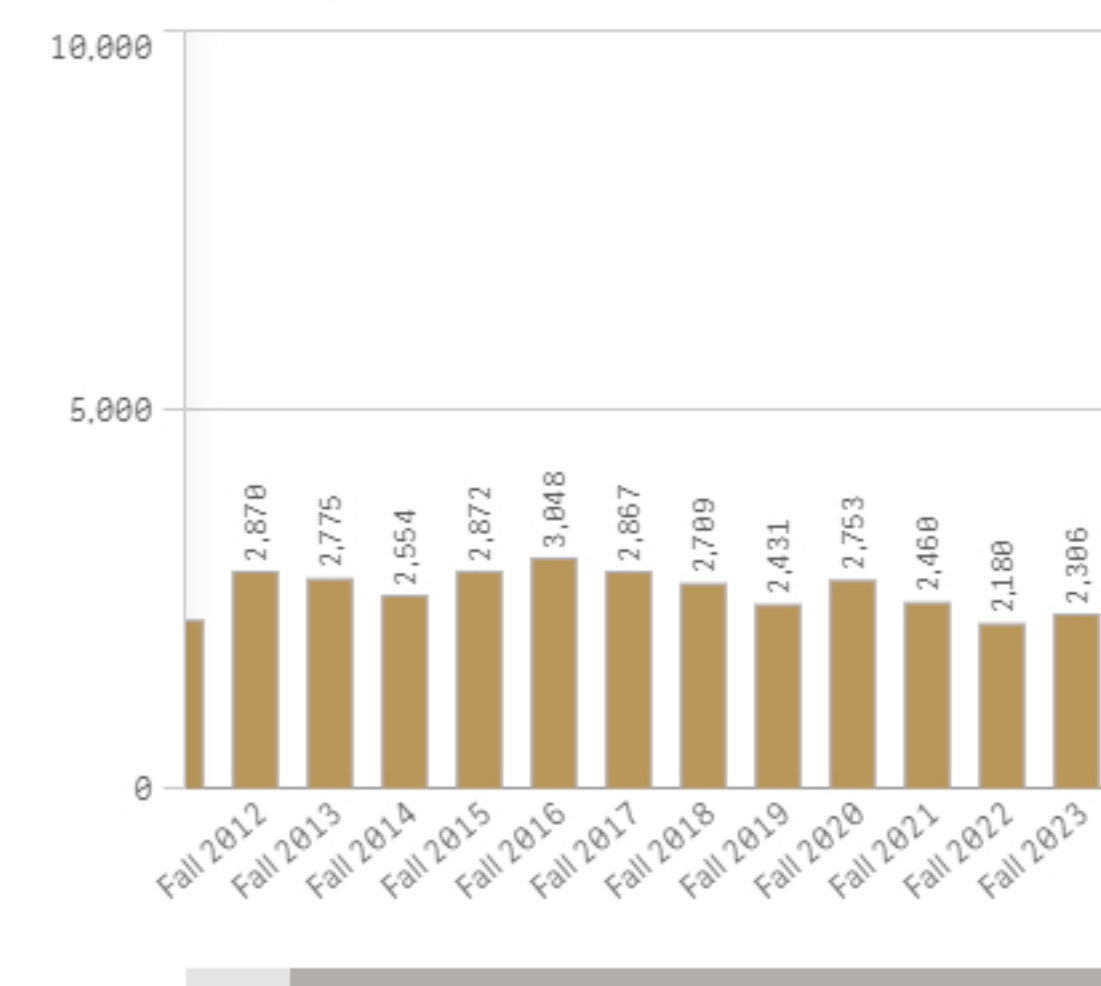


Chart ADM 6.3 Graduate Students Enrolled

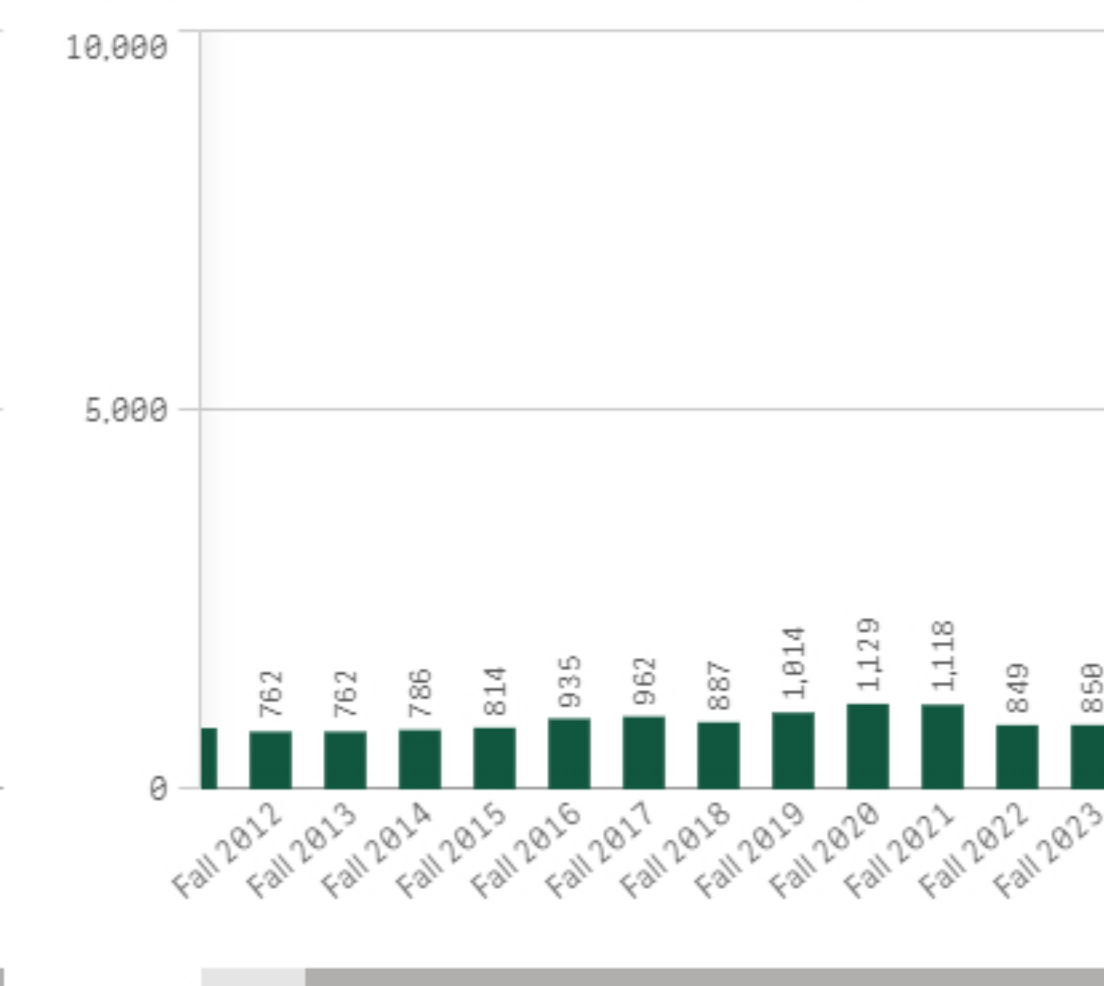


Table AMD 6.1 Graduate Students Applied by School/College and Degree Level

School/College	Degree Level	Academic Period													
		Fall 2023	Fall 2022	Fall 2021	Fall 2020	Fall 2019	Fall 2018	Fall 2017	Fall 2016	Fall 2015	Fall 2014	Fall 2013	Fall 2012	Fall 2011	Fall 2010
Totals		5,294	4,215	5,773	5,075	5,731	6,220	6,775	6,929	7,088	6,856	8,229	8,024	7,970	8,648
Faculty of Arts and Sciences		748	601	764	473	537	602	657	703	693	747	708	823	815	839
Masters Degree		567	449	607	353	426	457	452	462	480	499	464	540	519	520
Doctoral Degree		181	152	157	120	111	145	205	241	213	248	244	283	296	319
School of Business		1,189	966	1,108	1,385	1,109	1,328	1,323	1,245	1,023	836	777	739	400	761
Postbaccalaureate Certificate		29	26	21	23	-	-	-	-	-	-	-	-	-	-
Masters Degree		1,160	940	1,087	1,362	1,109	1,328	1,323	1,245	1,023	836	777	739	400	761
School of Education		928	835	1,027	631	544	474	499	423	433	517	503	617	613	524
Postbaccalaureate Certificate		118	48	-	-	-	*	*	*	*	-	-	-	-	-
Masters Degree		730	665	892	535	440	369	370	330	344	403	408	494	491	436
Post Masters Certificate		11	20	22	13	12	9	11	*	8	10	13	12	10	12
Doctoral Degree		69	102	113	83	92	94	114	90	80	104	82	111	112	76
School of Law		2,327	1,701	2,751	2,499	3,461	3,732	4,196	4,453	4,823	4,649	6,105	5,725	6,046	6,406
Masters Degree		85	157	108	164	148	140	162	185	216	199	176	148	104	113
First-Professional Degree		2,242	1,544	2,643	2,335	3,313	3,592	4,034	4,268	4,607	4,450	5,929	5,577	5,942	6,293
School of Marine Science		102	112	123	87	80	84	100	105	116	107	136	120	96	118
Masters Degree		83	90	107	74	64	69	74	85	89	75	110	103	79	99
Doctoral Degree		19	22	16	13	16	15	26	20	27	32	26	17	17	19

Cell values less than 5 will be displayed as an asterisk **

Table AMD 6.2 Graduate Students Admitted by School/College and Degree Level

School/College	Degree Level	Academic Period													
		Fall 2023	Fall 2022	Fall 2021	Fall 2020	Fall 2019	Fall 2018	Fall 2017	Fall 2016	Fall 2015	Fall 2014	Fall 2013	Fall 2012	Fall 2011	Fall 2010
Totals		2,306	2,180	2,460	2,753	2,431	2,709	2,867	3,048	2,872	2,554	2,775	2,870	2,224	2,217
Faculty of Arts and Sciences		195	144	166	144	151	174	214	220	235	240	229	266	247	247
Masters Degree		136	104	115	94	102	123	150	154	145	143	138	160	167	167
Doctoral Degree		59	40	51	50	49	51	64	66	90	97	91	106	80	80
School of Business		914	763	840	1,020	761	797	740	625	513	406	321	374	243	385
Postbaccalaureate Certificate		27	25	21	22	-	-	-	-	-	-	-	-	-	-
Masters Degree		887	738	819	998	761	797	740	625	513	406	321	374	243	385
School of Education		481	483	509	443	352	290	303	276	267	300	298	329	318	269
Postbaccalaureate Certificate		108	41	-	-	-	*	-	*	*	-	-	-	-	-
Masters Degree		323	357	412	376	294	243	242	225	214	234	248	264	253	225
Post Masters Certificate		11	18	21	13	12	8	9	-	7	9	12	12	10	9
Doctoral Degree		39	67	76	54	46	37	52	50	45	57	38	53	55	35
School of Law		682	763	905	1,123	1,145	1,422	1,586	1,898	1,824	1,579	1,892	1,876	1,398	1,282
Masters Degree		64	52	94	142	142	133	143	172	170	145	145	110	89	87
First-Professional Degree		618	711	811	981	1,003	1,289	1,443	1,726	1,654	1,434	1,747	1,766	1,309	1,195
School of Marine Science		34	27	40	23	22	26	24	29	33	29	35	25	18	34
Masters Degree		27	19	33	20	17	18	18	21	22	18	29	19	13	26
Doctoral Degree		7	8	7	*	5	8	6	8	11	11	6	6	5	8

Cell values less than 5 will be displayed as an asterisk **

Table AMD 6.3 Graduate Students Enrolled by School/College and Degree Level

School/College	Degree Level	Academic Period													
		Fall 2023	Fall 2022	Fall 2021	Fall 2020	Fall 2019	Fall 2018	Fall 2017	Fall 2016	Fall 2015	Fall 2014	Fall 2013	Fall 2012	Fall 2011	Fall 2010
Totals		850	849	1,118	1,129	1,014	887	962	935	814	786	762	762	809	762
Faculty of Arts and Sciences		118	96	109	86	96	84	113	106	108	112	104	121	125	119
Postbaccalaureate Certificate		*	*	8	8	10	*	*	*	-	-	-	-	-	-
Masters Degree		75	66	73	53	60	57	82	78	74	75	79	80	88	88
Post Masters Certificate		-	-	-	-	-	-	-	-	6	-	-	-	-	-
Doctoral Degree		41	26	28	25	26	23	30	26	28	37	25	41	37	31
School of Business		334	334	450	494	397	387	431	370	300	240	189	214	234	224
Postbaccalaureate Certificate		10	10	7	14	-	-	-	-	-	-	-	-	-	-
Masters Degree		324	324	443	480	397	387	431	370	300	240	189	214	234	224
School of Education		210	177	330	280	231	180	199	153	158	167	169	185	190	159
Postbaccalaureate Certificate		64	35	-	-	-	-	-	-	-	-	-	-	-	-
Masters Degree		125	112	254	235	188	145	147	115	124	120	129	136	141	130
Post Masters Certificate		11	14	21	13	12	7	9	-	6	9	10	12	10	9
Doctoral Degree		10	16	55	32	31	28	43	38	28	38	30	37	39	20
School of Law		164	224	199	254	270	221	201	287	229	250	281	224	245	233
Masters Degree		13	12	23	25	30	28	16	51	28	36	55	27	28	19
First-Professional Degree		151	212	176	229	240	193	185	236	201	214	226	197	217	214
School of Marine Science		24	18	30	15	20	15	18	19	19	17	19	18	15	27
Masters Degree		21	11	25	11	15	9	14	13	14	10	13	15	9	21
Doctoral Degree		*	7	5	*	5	6	*	6	5	7	6	*	6	6

Cell values less than 5 will be displayed as an asterisk **