

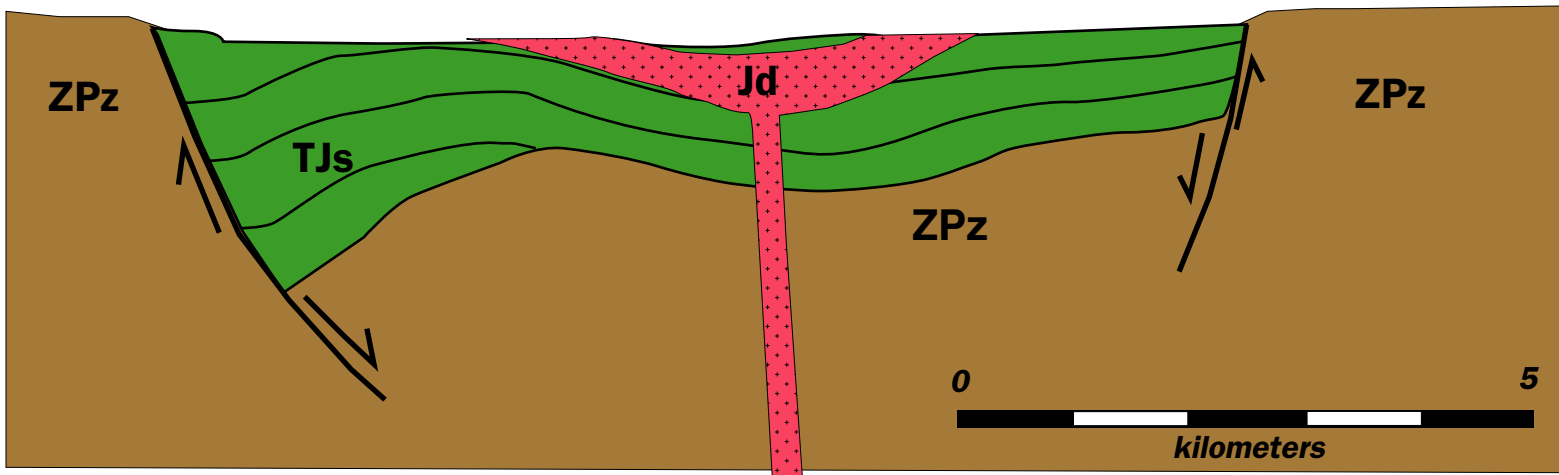
# Simplified Geologic Cross Section of the southern part of the Culpeper Mesozoic Basin

1998

C.M. Bailey, College of William & Mary

**Blue  
Ridge**

**Piedmont**



**Jd- Jurassic diabase**



**TJs- Triassic-Jurassic sedimentary rocks**



**ZPz- Neoproterozoic to Paleozoic  
igneous & metamorphic rocks**