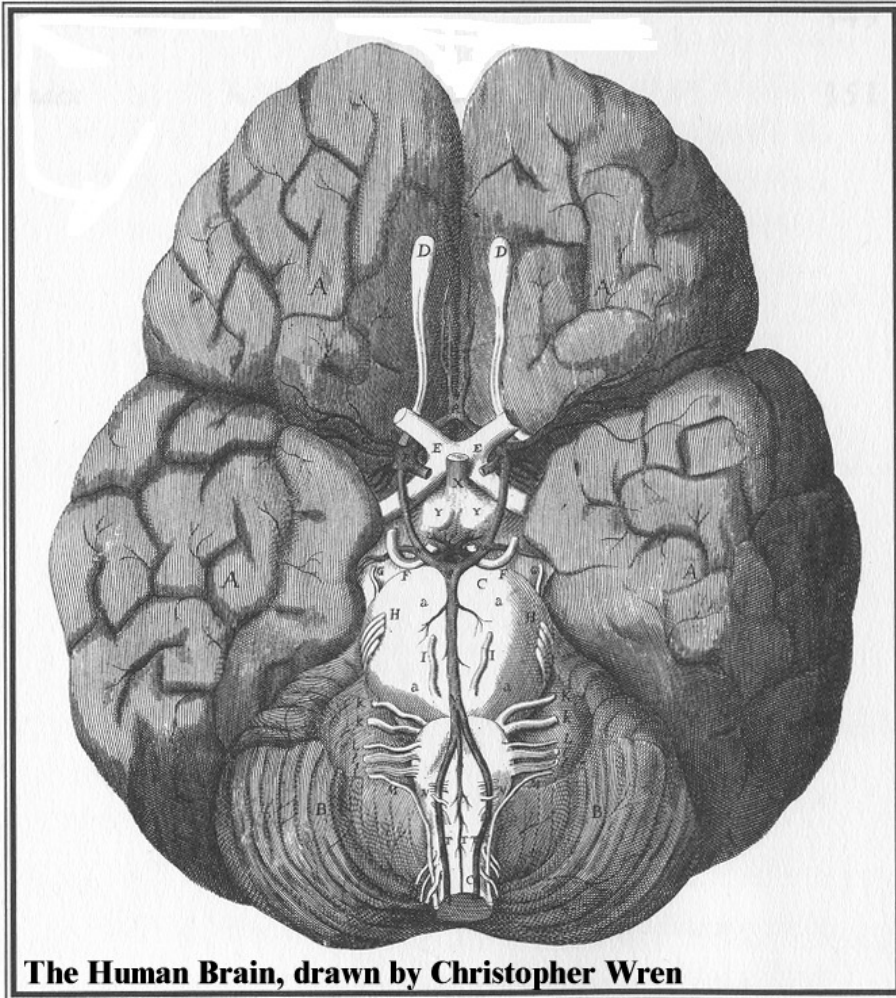


**The Interdisciplinary Studies Program in Neuroscience Presents:  
The 2007 Neuroscience Spring Symposium...  
Crossing Traditional Borders**



**The Human Brain, drawn by Christopher Wren**

\* from the Soul Made Flesh by Carl Zimmer

The boundaries of traditional science that were established in the time of Sir Thomas Willis and Christopher Wren have blurred. Today, many pathways can lead to the answers we seek. Join us as we highlight some of these innovative researchers.

**Keynote Address:**

**"Eve's Legacy:  
Snakes, Vision, and  
the Origin of  
Primates"**

**Lynne Isbell, Ph.D.  
Professor of Anthropology  
University of California, Davis**

**Thursday, March 29th, 2007**

**3:00pm - 5:30pm**

**University Student Center, Tidewater A**

**William and Mary Neuroscience Faculty Presentations:**

- 3:00pm Randy Coleman** "Computational Studies of Neurodegenerative Diseases"  
Dept. of Chemistry
- 3:15pm Pam Hunt** "Modeling the behavioral phenotype of fetal alcohol spectrum disorders in the rat: Highlights from my students' research"  
Dept. of Psychology
- 3:30pm John Griffin** "Hyperthermia Happens"  
Dept. of Biology
- 3:45pm Coffee Break**
- 4:00pm Keynote Address by Lynne Isbell**

For more information, contact: John Griffin (221-2257)