



ABOVE: PHOTO BY GENE RUNION



waterstreetstudio  
landscape architecture | civil engineering  
418 E Main Street 434.295.8177 Charlottesville, VA 22902

## JAMES MONROE'S HIGHLAND

SCHEMATIC MASTER PLAN  
SEPTEMBER 21-22, 2016







PHOTO BY GENE RUNION





DISTANCES

**MONROE'S HIGHLAND to**

**JEFFERSON VINEYARDS**

driving: 1.4 mi  
linear distance: 0.8 mi

**TUFTON**

driving: 2.3 mi  
linear distance: 1.7 mi

**INTERNATIONAL CENTER FOR**

**JEFFERSON STUDIES**

driving: 2.6 mi  
linear distance: 1.2 mi

**MORVEN**

driving: 2.9 mi  
linear distance: 1.4 mi

**MONTICELLO**

driving: 3.0 mi  
linear distance: 1.9 mi

**MONTALTO**

driving: 4.1 mi  
linear distance: 1.3 mi

**MONTICELLO TRAIL**

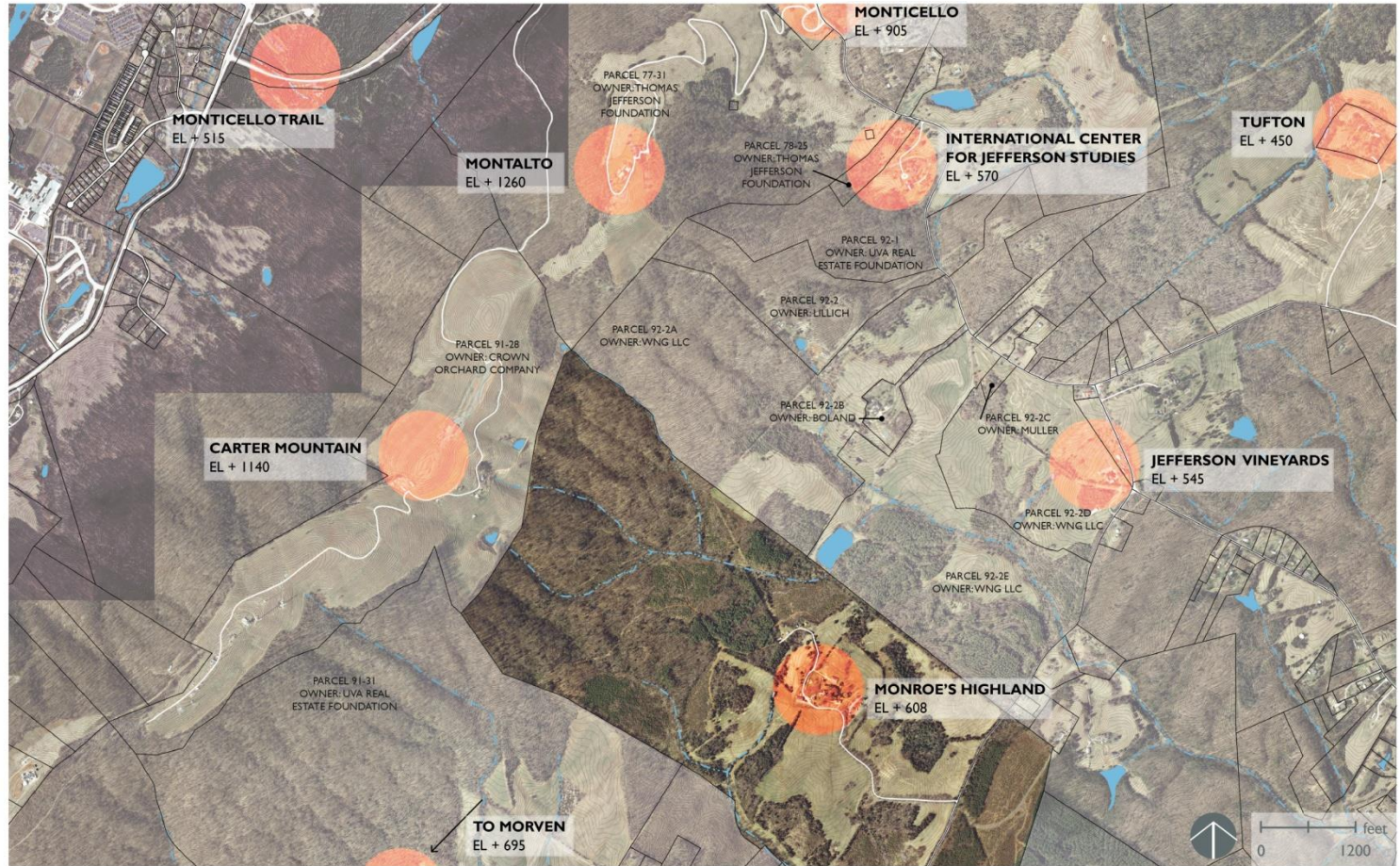
driving: 4.3 mi  
linear distance: 1.8 mi

**CARTER MOUNTAIN**

driving: 5.2 mi  
linear distance: 1.0 mi

**TRUMP WINERY**

driving: 4.7 mi  
linear distance: 3.27 mi



waterstreet studio  
LANDSCAPE ARCHITECTS  
CIVIL ENGINEERS

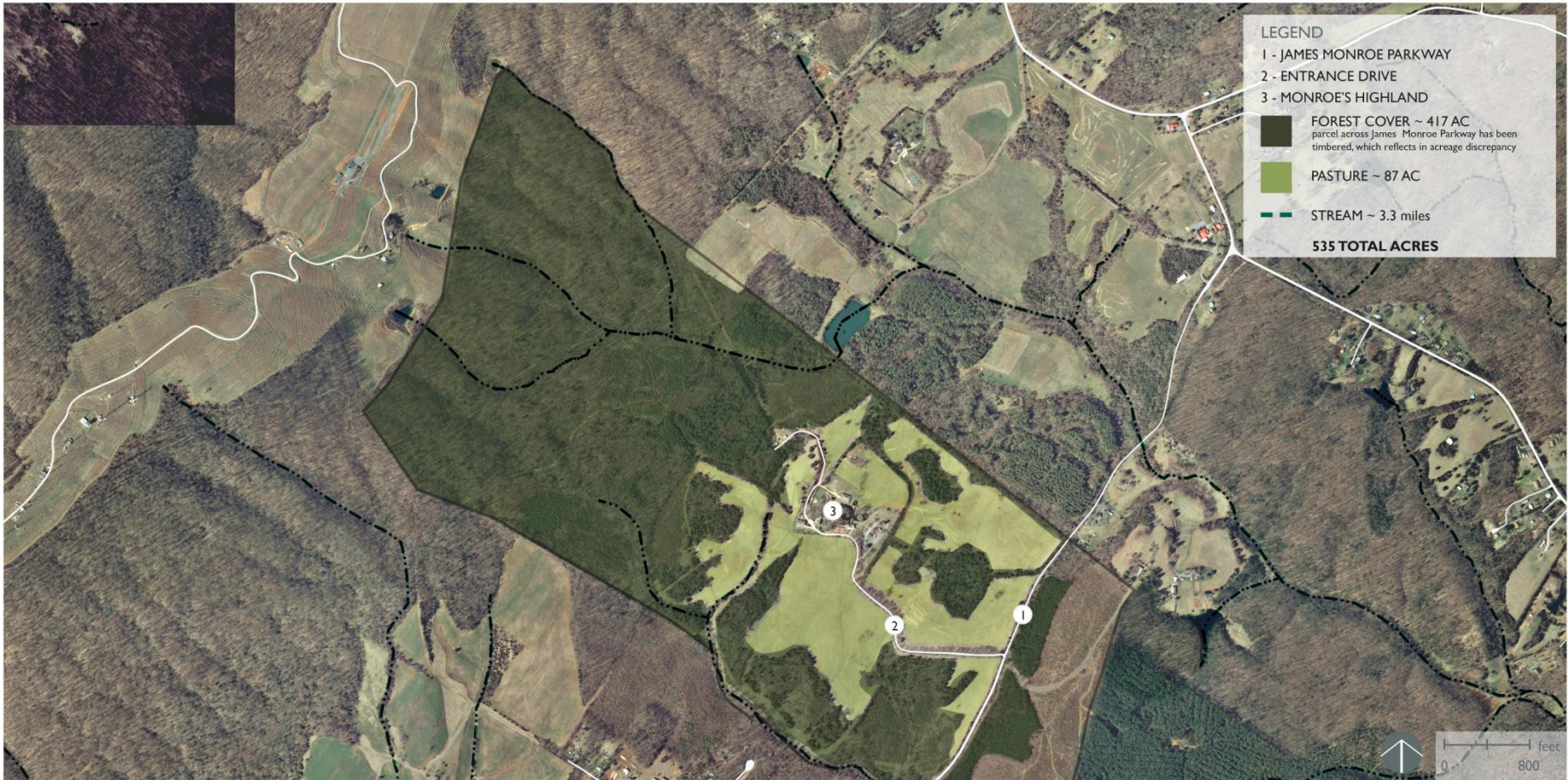
OVERALL CONTEXT

JAMES MONROE'S HIGHLAND

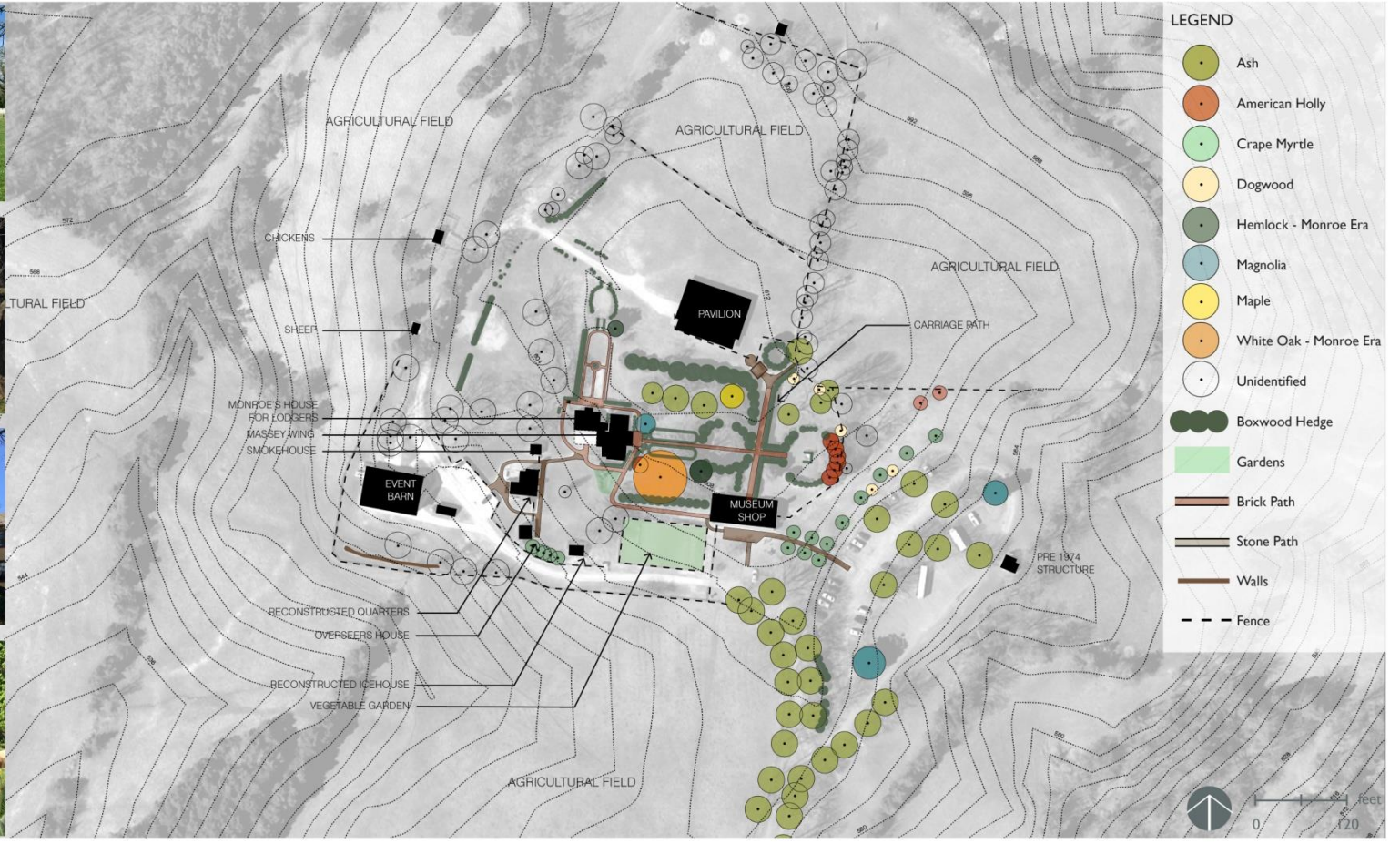
SCHEMATIC MASTER PLAN

SEPTEMBER 21-22, 2016





















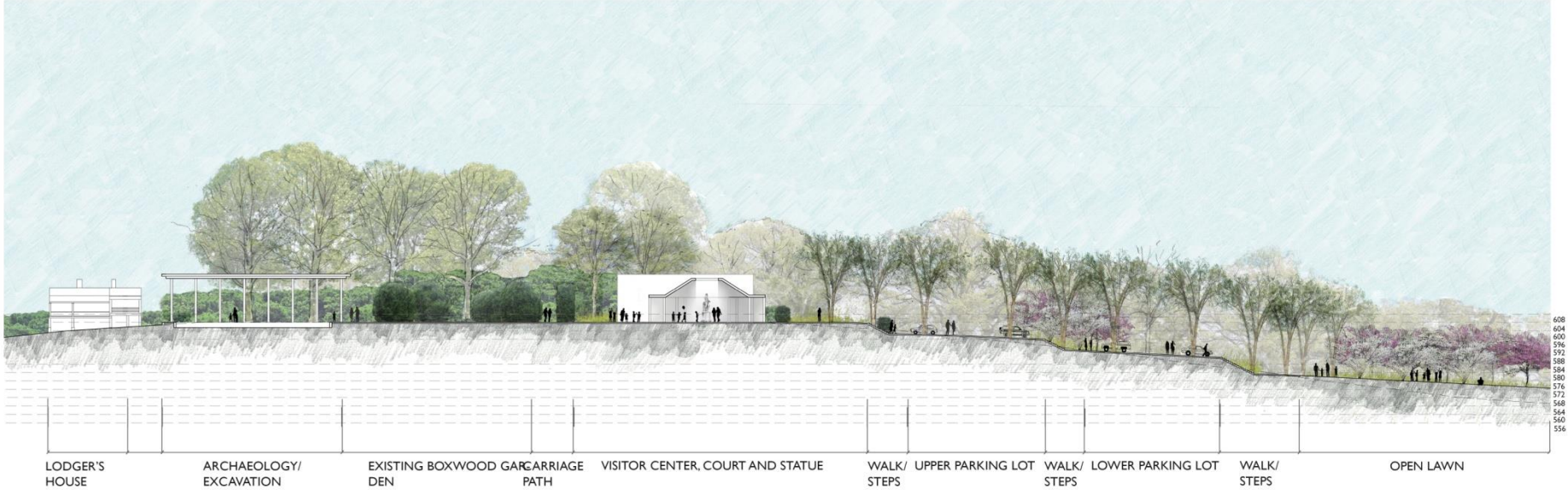
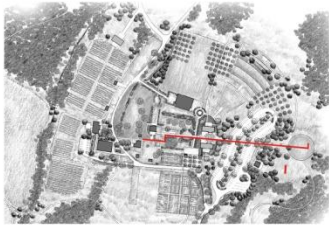


LEGEND

- 1 - UPPER PARKING LOT - 81 SPACES
- 2 - LOWER PARKING LOT - 61 SPACES
- 3 - RESTROOMS (REHABILITATE EXISTING STRUCTURE)
- 4 - EXISTING BOXWOOD GARDEN
- 5 - VISITOR CENTER WITH CENTRAL PAVILION AND OUTDOOR TERRACES
- 6 - ARCHAEOLOGY EXCAVATION/PAVILION
- 7 - PAVED TERRACES/HERB GARDEN
- 8 - TREE ALLEE WALK W/ HEDGES/BENCHES
- 9 - ACCESSIBLE PARKING
- 10- DEMONSTRATION CROPS/GARDEN
- 11- FUTURE QUARTERS ARCHAEOLOGY
- 12- CONSERVATION AGRICULTURE
- 13- SERVICE COURT/EVENT TERRACE W/HEDGES
- 14- ENTRY COURT
- 15- EXPANDED EVENT LAWN - 330' x 250'
- 16- ORCHARD
- 17- SMALL EVENT LAWN
- 18- MOWN PATH
- 19- MEADOW
- 20- LAWN TERRACES - 220' x 120'
- 21- AMPHITHEATER
- 22-SHEEP PADDOCK W/ PASTURE
- 23-BARN AND SERVICE COURT
- 24-ORCHARD WITH PICNIC AREA AND SEAT WALLS
- 25-RELOCATED MASSEY HOUSE WITH COURTYARD TERRACES
- 26-PEACOCK YARD
- 27-JOHNS GARDEN
- 28-MONROE'S HOUSE FOR LODGERS
- 29-MUSEUM SHOP - TO BE REMOVED







—|— feet  
0    32







LEGEND

- 1 - UPPER PARKING LOT - 81 SPACES
- 2 - LOWER PARKING LOT - 61 SPACES
- 3 - RESTROOMS (REHABILITATE EXISTING STRUCTURE)
- 4 - EXISTING BOXWOOD GARDEN
- 5 - VISITOR CENTER WITH CENTRAL PAVILION AND OUTDOOR TERRACES
- 6 - ARCHAEOLOGY EXCAVATION/PAVILION
- 7 - PAVED TERRACES/HERB GARDEN
- 8 - TREE ALLEE W/ HEDGES/BENCHES
- 9 - ACCESSIBLE PARKING
- 10- DEMONSTRATION CROPS/GARDEN
- 11- FUTURE QUARTERS ARCHAEOLOGY
- 12- CONSERVATION AGRICULTURE
- 13- SERVICE COURT/EVENT TERRACE W/HEDGES
- 14- ENTRY COURT
- 15- EXPANDED EVENT LAWN - 330' x 250'
- 16- ORCHARD
- 17- SMALL EVENT LAWN
- 18- MOWN PATH
- 19- MEADOW
- 20- LAWN TERRACES - 220' x 120'
- 21- AMPHITHEATER
- 22-SHEEP Paddock W/ PASTURE
- 23-BARN AND SERVICE COURT
- 24-ORCHARD WITH PICNIC AREA AND SEAT WALLS
- 25-RELOCATED MASSEY HOUSE WITH COURTYARD TERRACES
- 26-PEACOCK YARD
- 27-JOHNS GARDEN
- 28-MONROE'S HOUSE FOR LODGERS
- 29-MUSEUM SHOP - TO BE REMOVED

