

Board of Visitors ♦ September 14, 2017

# STUDENT AFFAIRS



# Updates from the Vice President



Maggie Evans  
AVP for Campus Living



And a  
Surprise





“ . . . you are here to be about the business of the skills of freedom so that you can go out and move mountains, so you can change the world, so you can make things better.”

Judge John Charles Thomas



W&M  
FAMILY  
WEEKEND  
2017



# Our World, Our Conversations



**DACA** 

**Deferred Action for Childhood Arrivals**



# Fraternity & Sorority Life at W&M

*Student Leadership Development in Action*



WILLIAM & MARY

CHARTERED 1693

# A W&M Tradition Since 1776

*The Birthplace of the American College Fraternity*



# Student Leadership Development

At William & Mary, we believe that student leadership development is a cornerstone in supporting our students to become engaged citizens.

Student leadership ***involves cultivating a frame of mind for exploring self, others and community.***

Leaders develop a skill set to adapt to change, craft creative solutions, and seize opportunities.  
***Leaders are moved by what they care about to make the world a better place.***



# What That Means



SELF



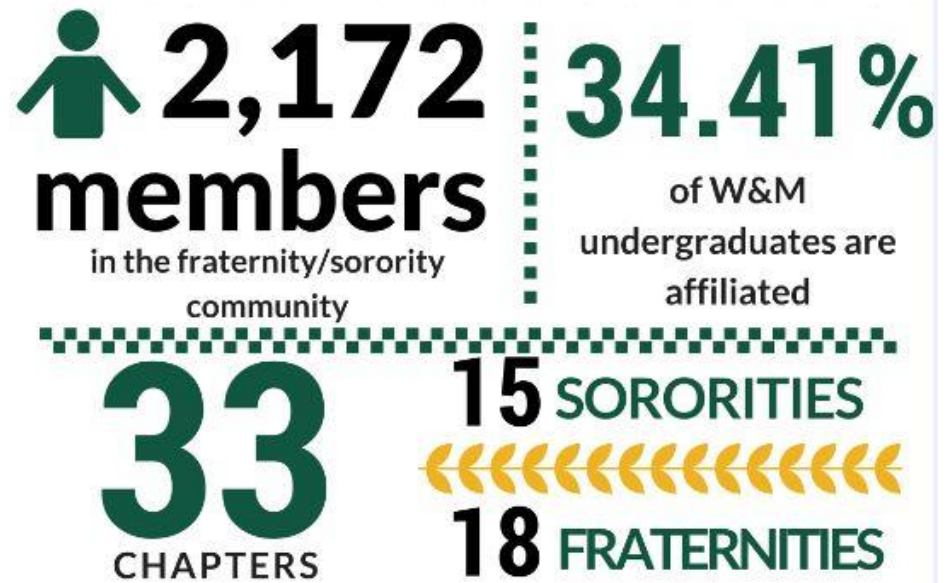
OTHERS



COMMUNITY

**POSITIVE CHANGE**

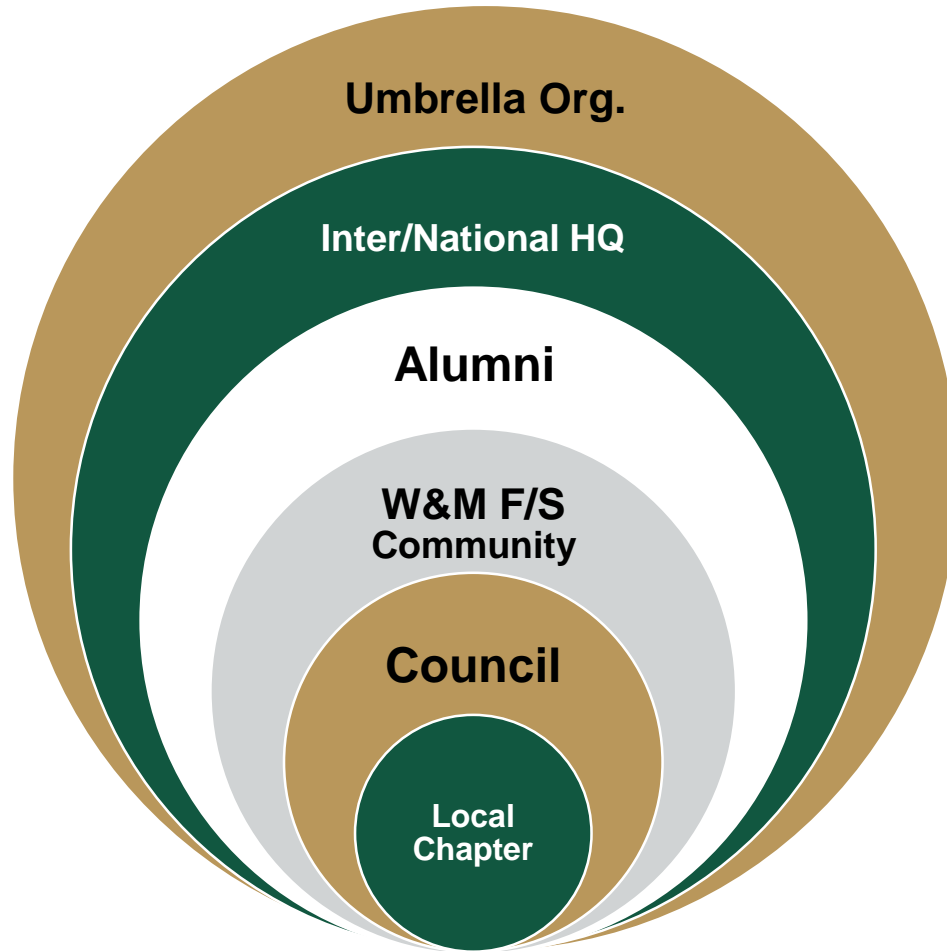




\*Spring 2017 Membership Data







**STAKEHOLDERS**







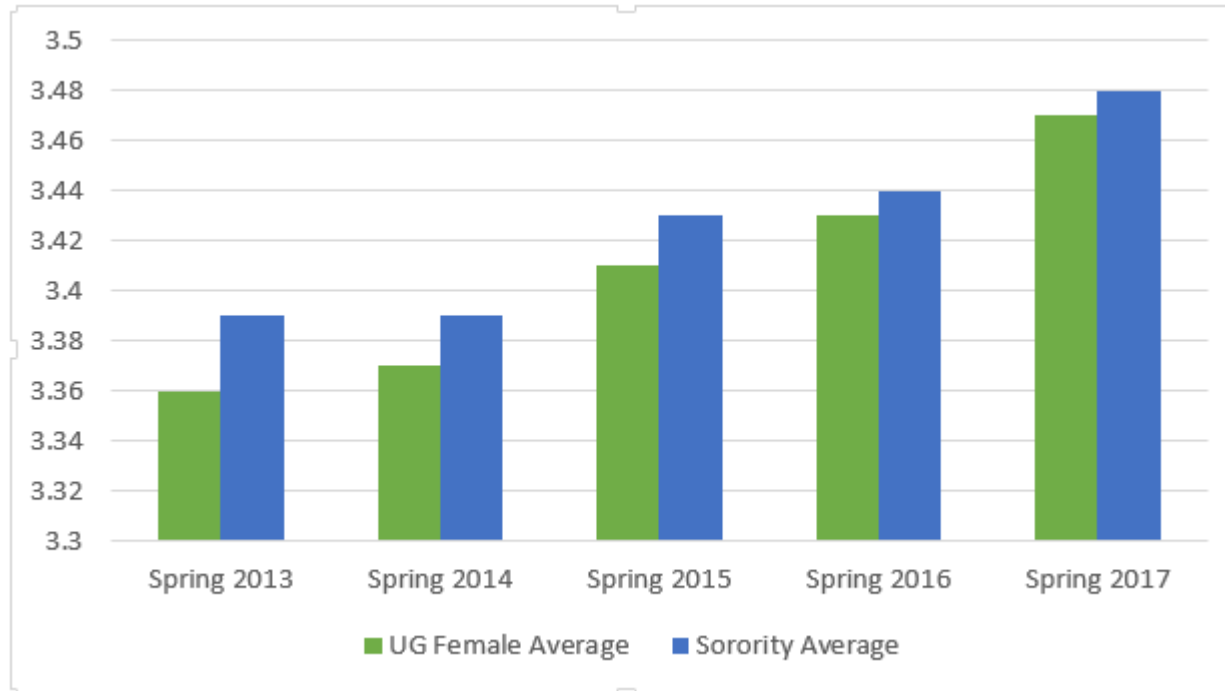


# Spring 2017 Grade Information

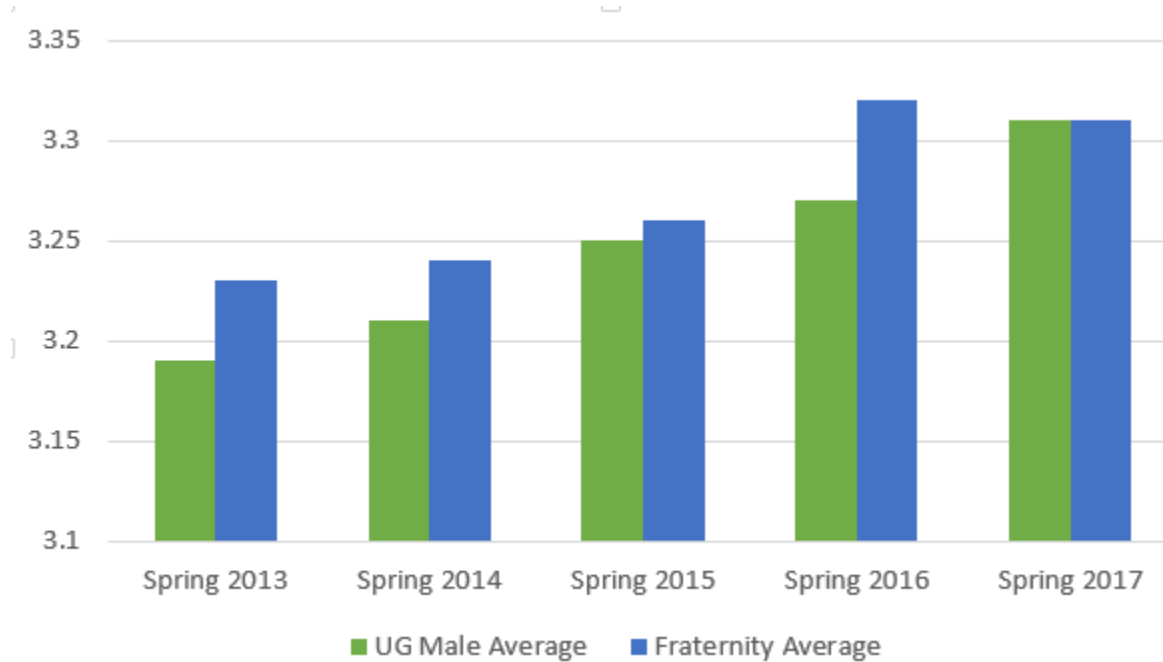
- Average Sorority GPA: 3.486
- Average Fraternity GPA: 3.319
- All Fraternity/Sorority GPA: 3.42

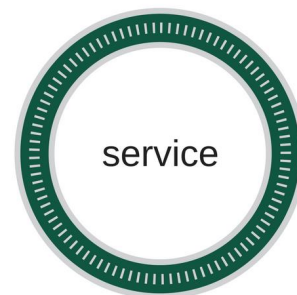


# All Female vs. All Sorority



# All Male vs. All Fraternity









well-being





trends at  
W&M



- NPC Excellence Award: 2017, 2016, 2015 2014
- NPC Achievement Award, 2013
- SEIFC Outstanding Program Award for “Supporting Survivors Program” 2017
- Dr. Kent L. Gardner Award Winner  
*Ginger Ambler, 2015*
- Robert H. Shaffer Award  
*Anne Arseneau, 2014*

# Fraternity & Sorority Life Staffing

- **Joe Wheeless**, Asst. Director of Student Leadership Development
- **Anne Strickland**, Coordinator for Fraternity/Sorority Life
- **Sabrina Paxton**, Graduate Assistant
- **Shylan Scott**, Asst. Director for Fraternity & Sorority Housing

# Fraternity & Sorority Housing



# Fraternity Learning Environments



## Dr. James Barber

Associate Professor, School of Education  
Faculty Fellow, Sigma Phi Epsilon  
W&M Special Interest Housing Committee

# Fraternity Learning Environments

- Study transition to new housing at W&M to explore how the men saw their houses as learning environments
- Longitudinal Design over two years: 2012-13 (“units”) and 2013-14 (“houses”)
- Three Fraternity Chapters
  - Fall 2012      12 interviews
  - Spring 2014    10 interviews
  - Eight of the men were interviewed both years



# Research Questions

1. Where do students perceive the learning space in the fraternity houses (if anywhere)?
2. What physical elements of the space promote/deter student learning?

# Methods

- Focus on the Fraternity Residence as a *Learning Environment*
- Semi-structured Interview + House Tour
- Data include recorded interviews, personal observation notes, and photographs (132)



**Beta Theta Pi – Old Exterior: “Unit M”  
Fall 2012**



**Beta Theta Pi – New Facility Exterior  
Spring 2014**



***As a whole I would not say there is a learning space in the house, at least not for me. - Theodore***



**Kappa Delta Rho – Unit Interview  
Fall 2012**

***People do a lot of studying in this room here that we're in now, which is the living room. -Theodore***

**Kappa Delta Rho – New House Interview  
Spring 2014**







**Kappa Delta Rho – Unit Chapter Room  
Fall 2012**



**Kappa Delta Rho – New Chapter Room  
Spring 2014**

**Promote? Probably not. But again, the basement...as space it tolerates learning. - Bill**



**Beta Theta Pi – Old Facility Study Area  
Fall 2012**



**Definitely. Definitely this one, the study...in terms of just having space for tables and chairs, and for people to kind of get together and sit. - Joe**



**Beta Theta Pi – New Facility Study Area  
Spring 2014**

# Summary Points

- Students actually do see their residences as learning environments
  - Increased discussion of academic work at the houses in 2014 new facilities
- Students felt more ownership of and responsibility for their new residences
- Change in place has allowed students to create more (and better) learning spaces
  - Language and furnishings determine use

# Faculty Advisor Experience



- Sigma Phi Epsilon
- Faculty Fellow
  - Academic Support
  - Career Advice
- Residential Learning Community
  - Residential College model
  - Accredited by national HQ