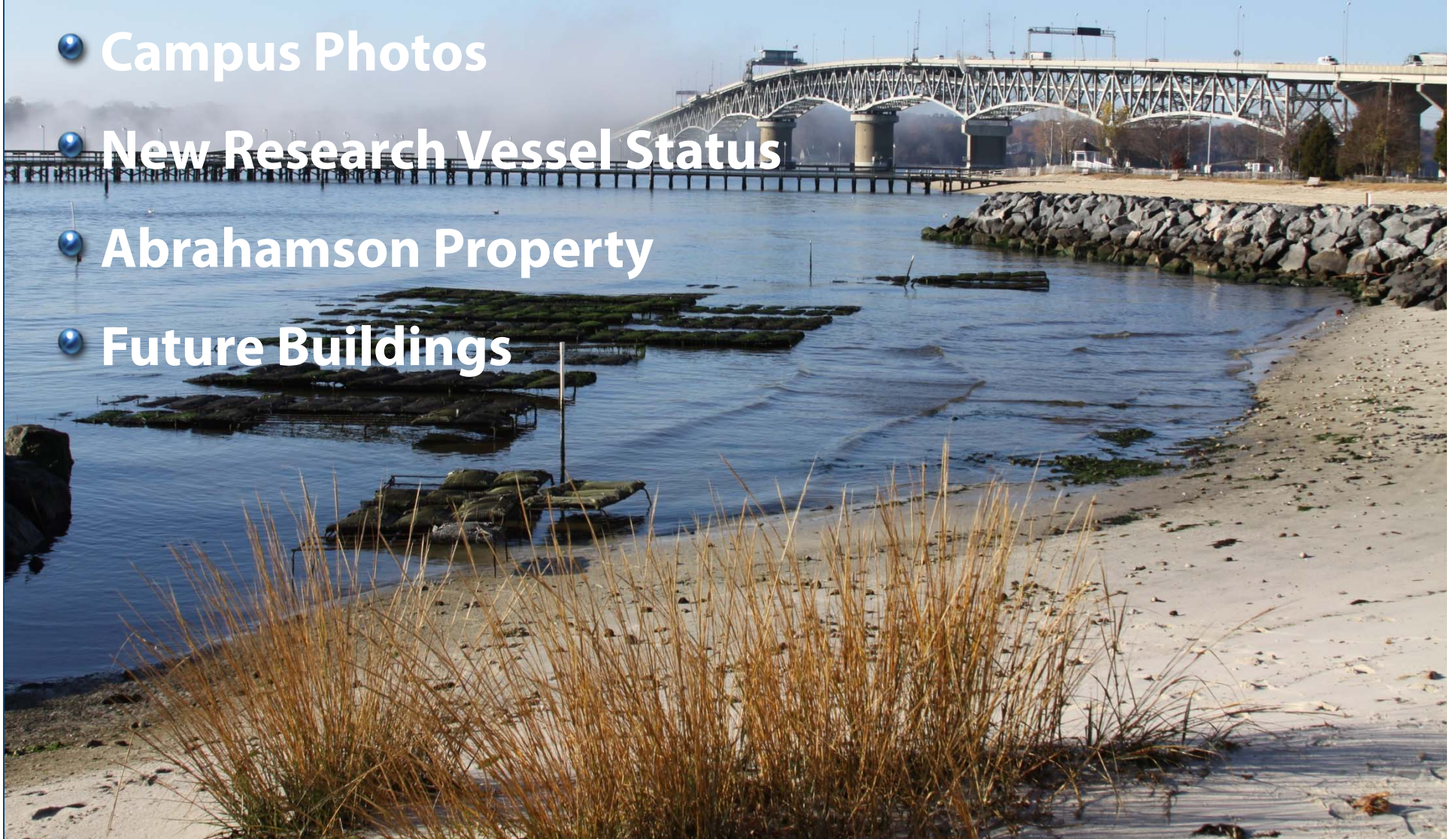
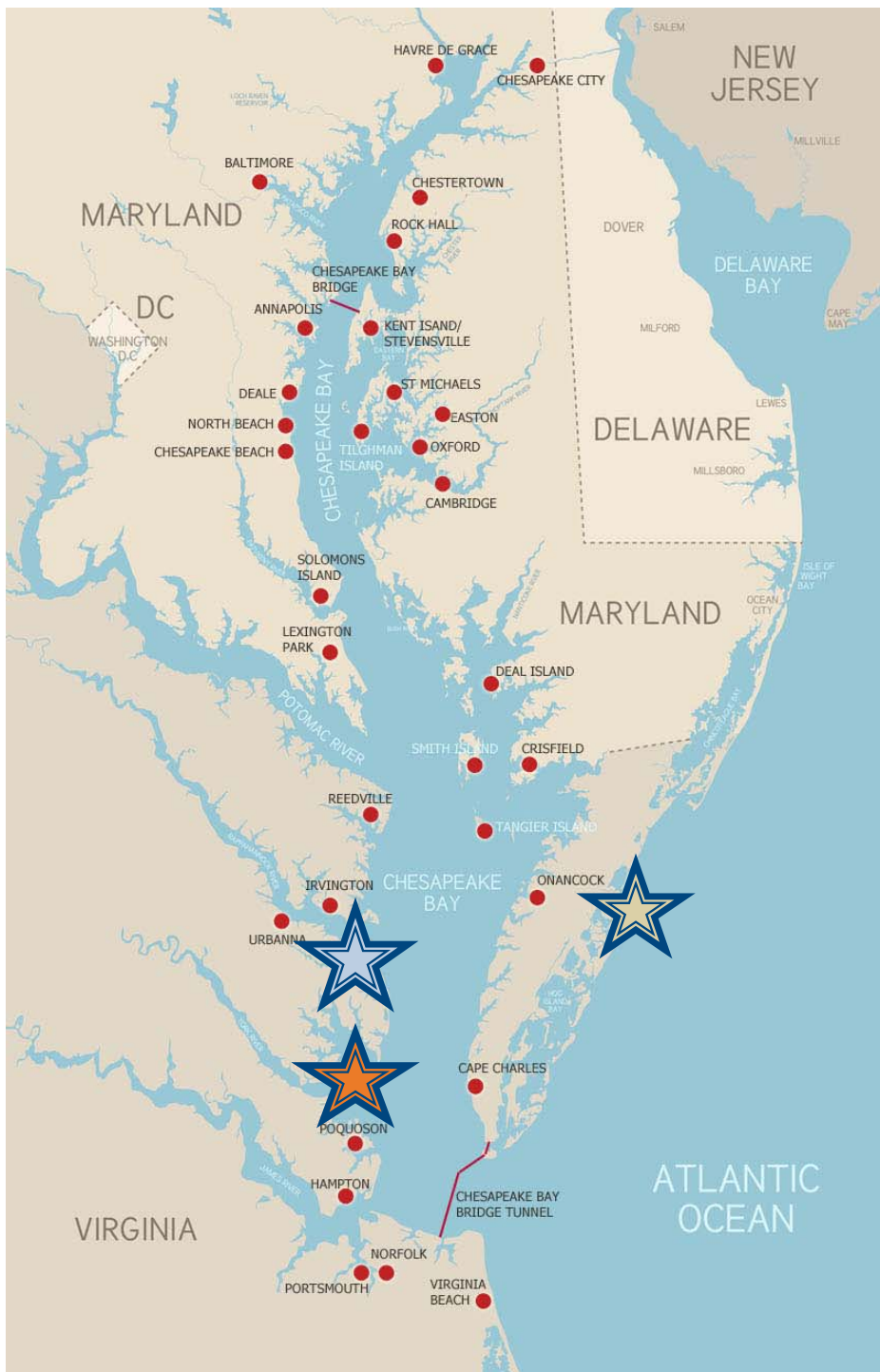


Committee on Administration, Buildings & Grounds Virginia Institute of Marine Science September 26, 2013

- Campus Photos
- New Research Vessel Status
- Abrahamson Property
- Future Buildings





VIMS Campuses



Main campus, Gloucester Point:

- Located at the mouth of the York River
- ~42 Acres
- 61 Buildings
- 333,380 SF



Field Laboratory, Wachapreague:

- Located on the seaside of the Eastern Shore
- ~5 Acres
- 22 Buildings
- 24,249 SF



Kauffman Aquaculture Center, Topping:

- Located on the Rappahannock River
- 1 Building
- 6,420 SF







Wachapreague Campus



Topping Campus



Research Vessel Update



New Research Vessel

June 2012 – September 2012:

- Established a Steering Committee
- Collected data on vessel needs from faculty and staff researchers
- Visited the *R/V Rachel Carson* and the commercial trawling vessel *Darana R*
- Developed the Mission Profile

November 2012 – January 2013:

- Developed and advertised RFP for Marine Architects
- Held a pre-proposal conference where nine firms were represented

February 2013 – April 2013:

- Received and Reviewed Seven Proposals
- Invited Three Firms for Presentations
 - JMS; Elliot Bay; RALion

New Research Vessel, Con't

May 2013 – September 2013:

- Selected JMS Naval Architects
- Held Design Kickoff Meetings



Next Steps:

- Develop 3 Conceptual Designs
- Select 1 and Develop Detailed Drawings
- Request Shipyard Qualifications for Construction

Abrahamson Property



- Property purchased in June 2013 to use as temporary housing for visiting scientists
- Scope development is underway to identify building code modification requirements in order to receive a certificate of use and occupancy

Future Buildings



Questions?

