

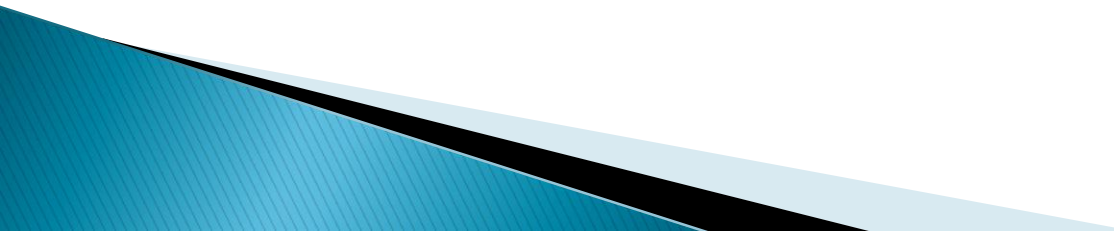
Professionals & Professional Faculty Assembly

Report to the
College of William & Mary
Board of Visitors
April 26, 2012

Professionals & Professional Faculty Assembly

- Overview
 - Goals & Projects
 - Benefits
- 

Professionals/Professional Faculty

- ▶ **Who:** 470 staff members
 - ▶ **What:** positions usually require an advanced degree or specialized training; most personnel policies are unique
 - ▶ **Where:** almost every department across campus
- 

Professionals work across campus:

Academic Advising

Admission

Athletics

Career Center

Counseling Center

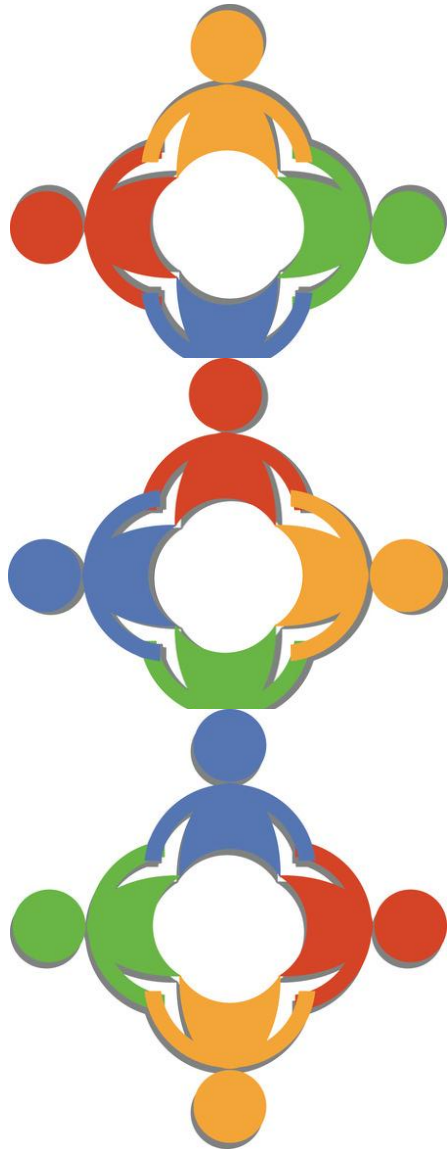
Creative Services

Dean of Students

Development

Equal Employment Opportunity



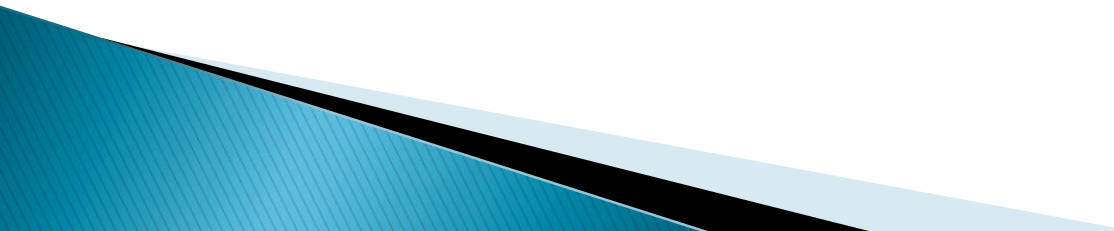


Facilities Management
Financial Aid
Information Technology
Institutional Analysis &
Effectiveness
International Studies
Investment Administration
Muscarelle Museum
Residence Life
School of Business
School of Education
School of Law



Student Activities
Student Affairs
Student Health Center
Swem Library
University Relations
VIMS
.....and many others

Professionals & Professional Faculty Assembly

- ▶ **What:** 21-member elected body.
 - ▶ **When:** approved by the Board of Visitors in Fall 2008.
 - ▶ **Why:** provide input for policies; foster professional development; complement the Faculty Assembly and Staff Assembly.
- 

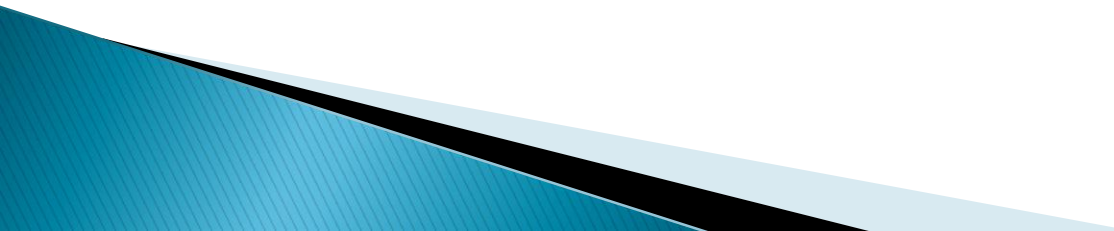
Professionals & Professional Faculty Assembly



Highlights of past 3+ years:

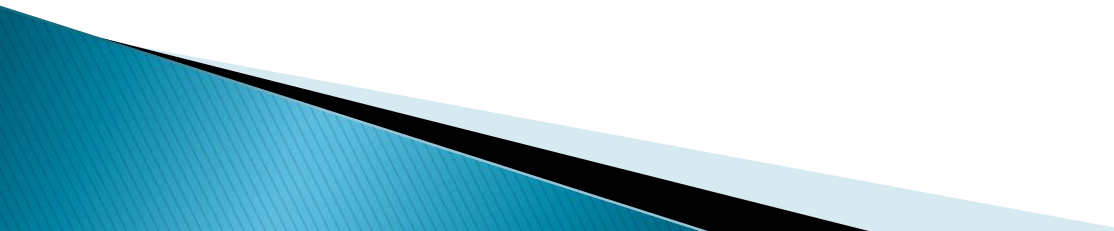
- ▶ Personnel policies
 - ▶ Strategic planning
 - ▶ Networking
 - ▶ Professional development
- 

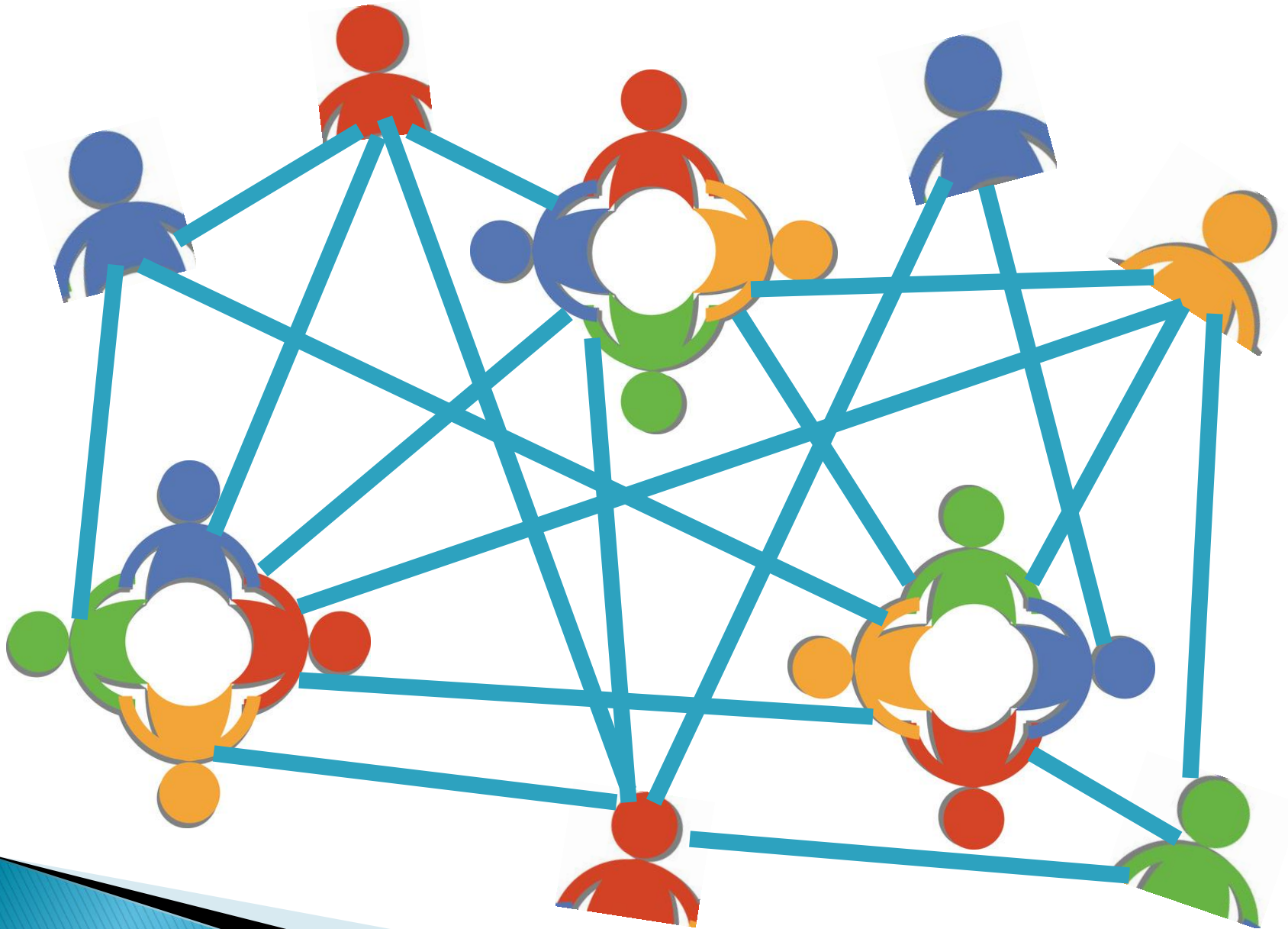
Highlights of 2011–12:

- Leadership development
 - Performance planning & evaluation policy and process
 - Tuition waiver for part-time employees
- 

Professionals & Professional Faculty Assembly

Benefits

- ▶ Project management skills
 - ▶ Leadership skills
 - ▶ Increased awareness and understanding of College issues
 - ▶ Sharing and learning of best practices
- 



Professionals & Professional Faculty Assembly

<http://www.wm.edu/proffaculty>