

APRIL 26, 2012

BUILDINGS AND GROUNDS COMMITTEE

CAPITAL BUDGET 2012

APPROVED PROJECTS

2013-2014

● Brafferton Renovation	\$2.25 mil
● Utilities, Phase IV	\$3.5 mil
● Storm Water Management	\$3.4 mil
● Improved Accessibility	\$3.0 mil
● Lake Matoaka Dam/Spillway	\$3.2 mil
● Maintenance Reserve	\$1.4 mil/yr

Lake
Matoaka
Dam



DESIGN PROJECTS

2013-2014

- ◎ Tyler Hall \$678,000
 - College funded with State Reimbursement
 - Funds support effort through preliminary design phase

CONSTRUCTION UPDATE

ISC III CONCEPT DESIGN

PROVOST'S GUIDING PRINCIPLES

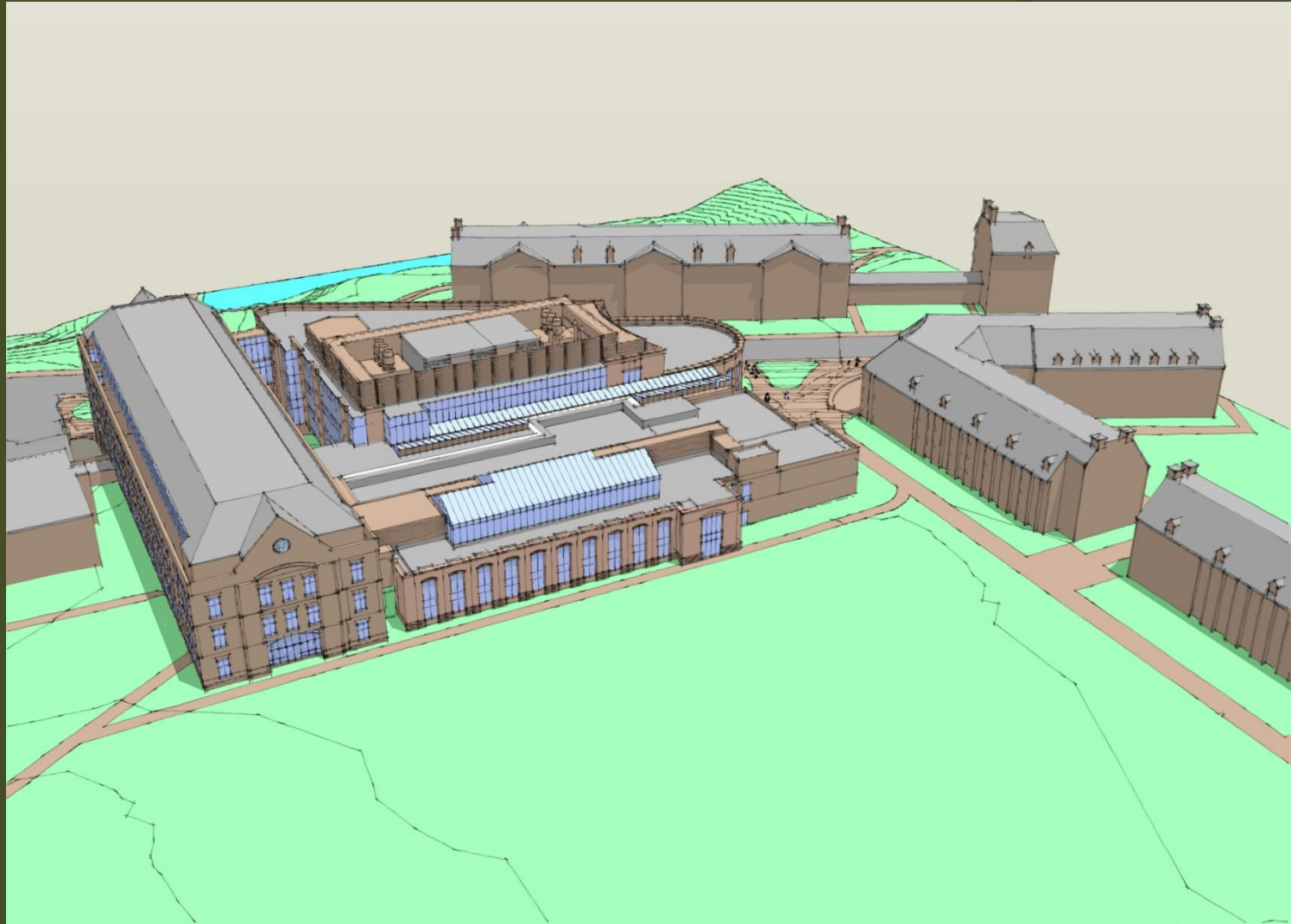
- ◎ Create an interconnected and truly integrated science complex
- ◎ Promote cross disciplinary research
- ◎ Group departments and activities for optimal adjacencies

PROJECT GOALS

- ◎ Create a truly integrated science complex
- ◎ Maximize teaching/research labs and provide adequate space for collaboration and study
- ◎ Provide spaces that are flexible
- ◎ Design infrastructure and building systems to be easy to maintain
- ◎ Aggressively approach energy conservation
- ◎ Build community and promote faculty-to-faculty interaction
- ◎ Showcase the prominence of science at W&M

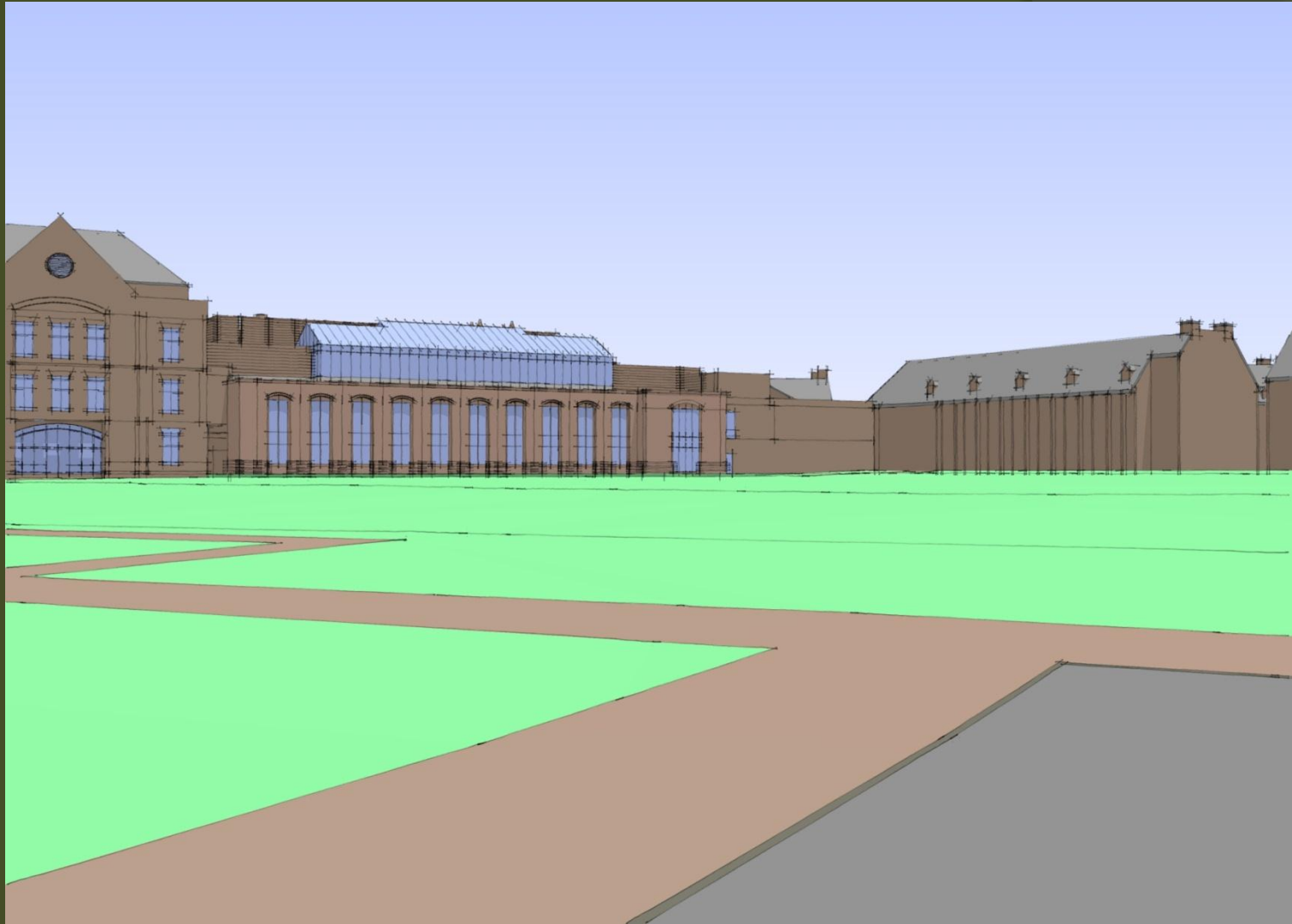
Perspective

Aerial SW



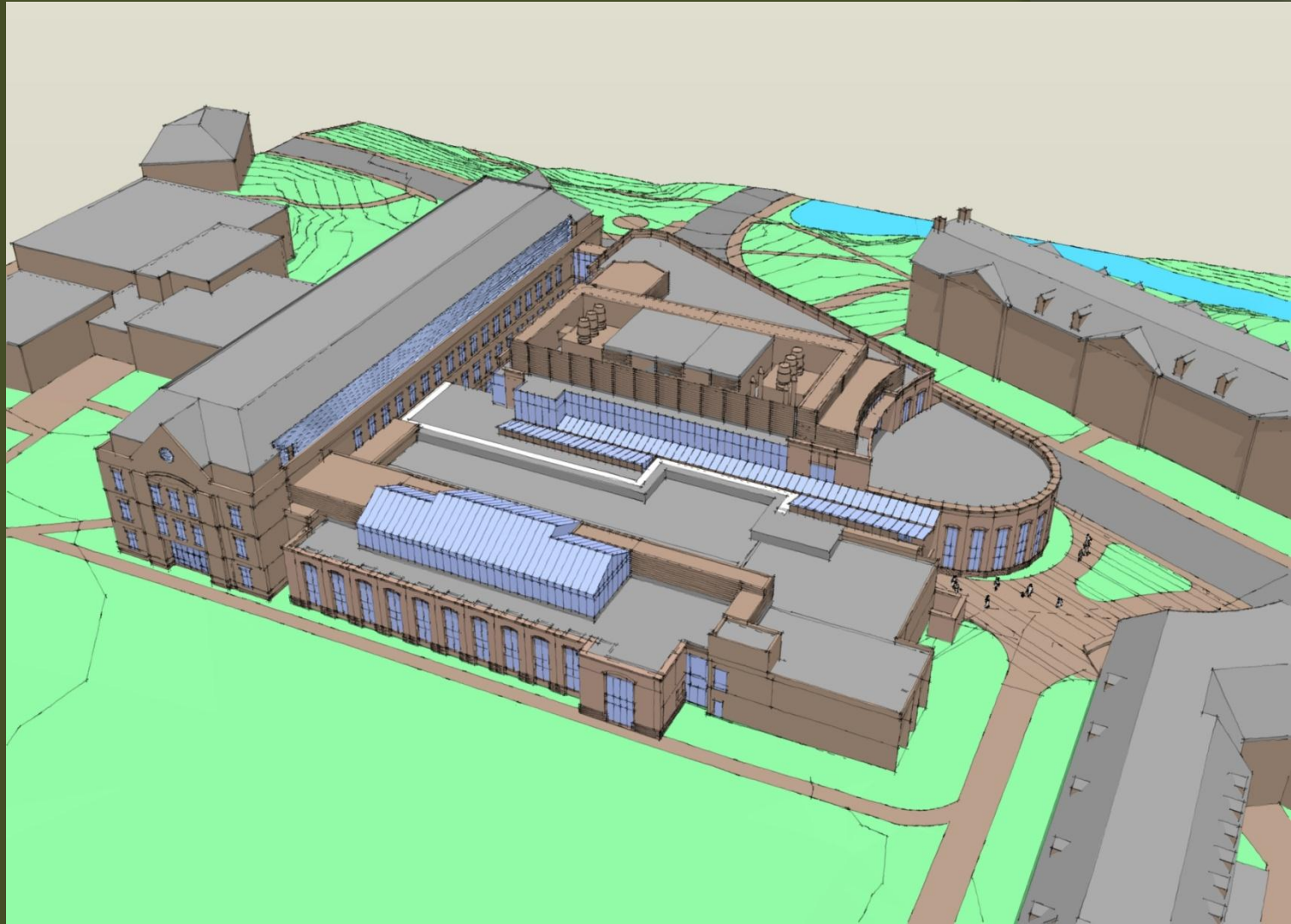
Perspective

Ground SW



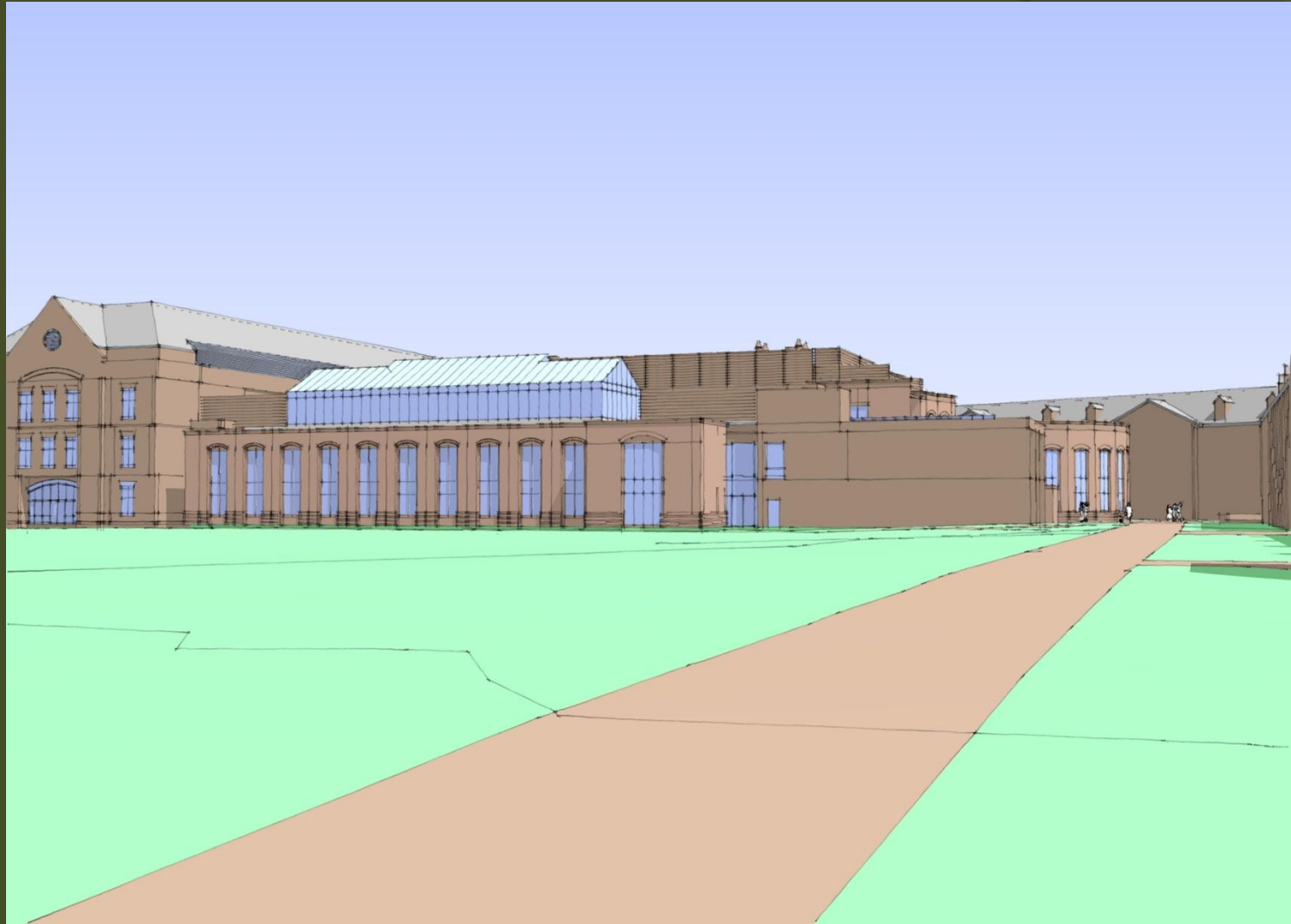
Perspective

Aerial SE



Perspective

Ground SE



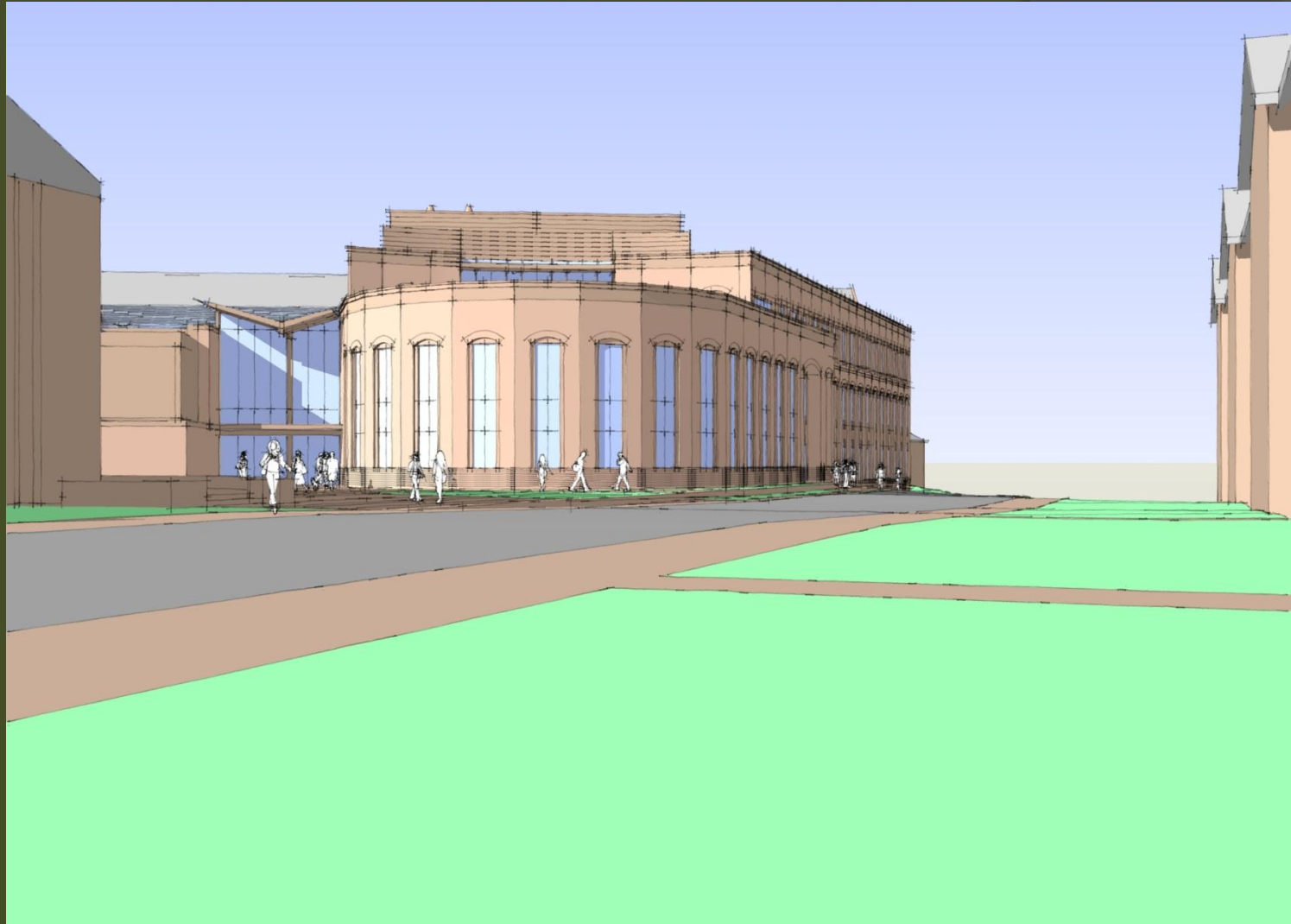
Perspective

Aerial NE



Perspective

Ground NE



Perspective

Aerial NW



Perspective

Ground NW

