

# Career Success Report

2017 - 18 ACADEMIC YEAR

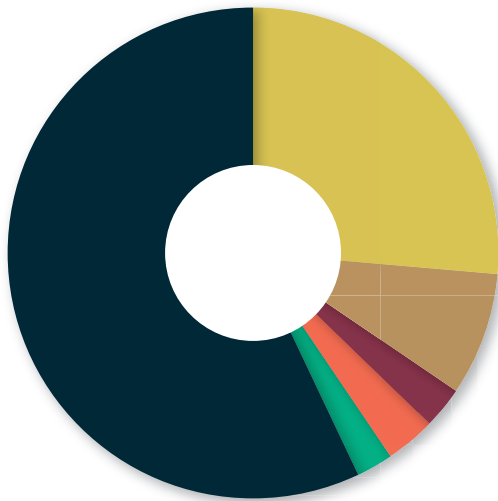


WILLIAM & MARY  
COHEN CAREER CENTER

## First Destination Report

Class of 2017 Undergraduates

83.4% of the class of 2017 survey respondents reported they are employed full time or attending graduate school within 6 months of graduation.



57.07%  
EMPLOYED FULL-TIME

8.12%  
JOB SEEKING

2.41%  
PURSUING GRAD SCHOOL

3.30%  
WORKING PART-TIME

26.37%  
ATTENDING GRAD SCHOOL

2.73%  
OTHER  
(Neither job seeking, going to grad school, nor working)

#19

BEST CAREER SERVICES  
by Princeton Review

#7

BEST SCHOOLS FOR INTERNSHIPS  
by Princeton Review

n=1,679 (surveyed and knowledge rate of 74.1%)

The Cohen Career Center's data collection for student career outcomes, reflected in this report, adheres to the standards and guiding principles established by the National Association of Colleges and Employers.

Franek, R., Soto, D., Koch, S., & Aliperti, P (2019). The Princeton review: The best 384 colleges. New York: Random House Press.

89.18% of those working reported their career interests aligns very well/somewhat well with their work. 461 graduates responded to this question.



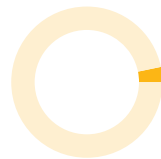
89.18%  
VERY WELL/  
SOMEWHAT WELL



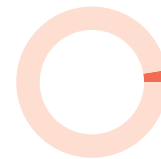
50.87%  
VERY WELL



38.31%  
SOMEWHAT WELL



3.25%  
NOT VERY WELL



2.60%  
NOT AT ALL



4.98%  
I DON'T KNOW MY  
CAREER GOALS

## Top Industries

### Accounting

\$55,687

AVERAGE INCOME



### Banking

\$64,714

AVERAGE INCOME



### Communications/ Media

\$36,073

AVERAGE INCOME



### Computers

\$78,671

AVERAGE INCOME



### Consulting

\$68,161

AVERAGE INCOME



### Education

\$32,304

AVERAGE INCOME



### Financial Services

\$69,468

AVERAGE INCOME



### Government/Public Administration

\$49,777

AVERAGE INCOME



### Health Care

\$30,494

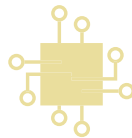
AVERAGE INCOME



### High Tech/Information Technology

\$79,055

AVERAGE INCOME



### International Affairs & Development

\$43,633

AVERAGE INCOME



### Law

\$43,320

AVERAGE INCOME



### Museums & Libraries

\$28,873

AVERAGE INCOME



### Non-Profit

\$32,624

AVERAGE INCOME



### Sciences

\$35,714

AVERAGE INCOME



## Top Employers

Employers who hired 4 or more 2017 undergraduates

Survey respondents report being hired by 525 unique employers

accenture



Booz | Allen | Hamilton

CapitalOne

Deloitte.

EY

Grant Thornton

IBM

MERKLE

Microsoft

NIH  
National Institutes  
of Health

Peace  
Corps

pwc

WILLIAM & MARY  
CHARTERED 1693

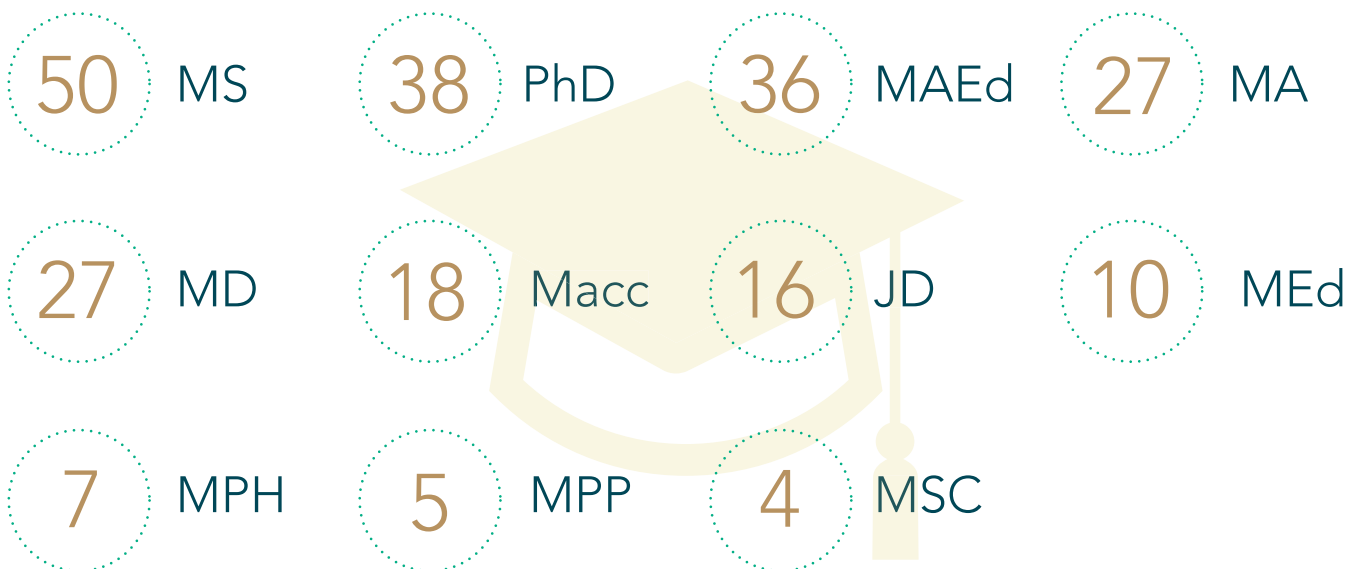
## Graduate School Enrollment

26.37% of the undergraduate class of 2017 matriculated to graduate school attending 132 distinct graduate programs as degree-seeking students.

The most represented schools are:

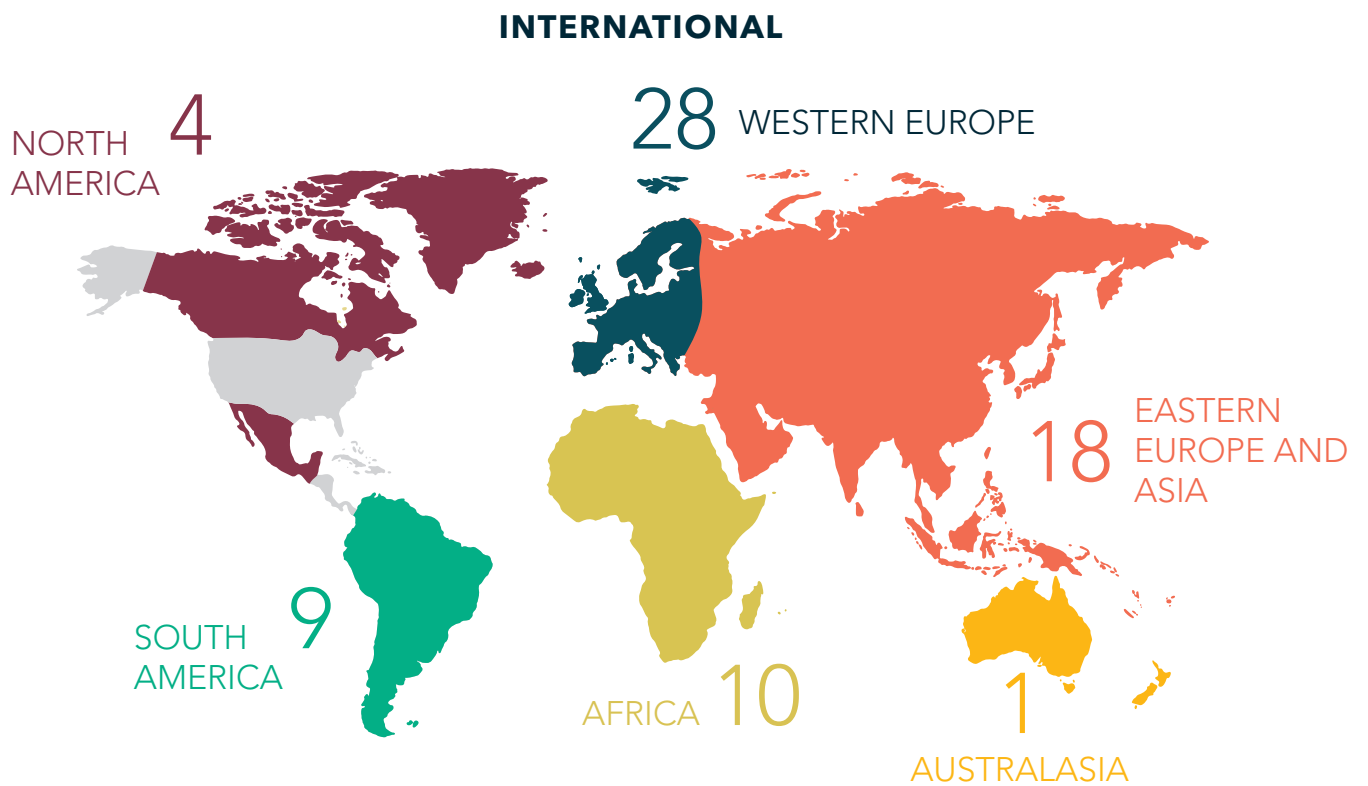
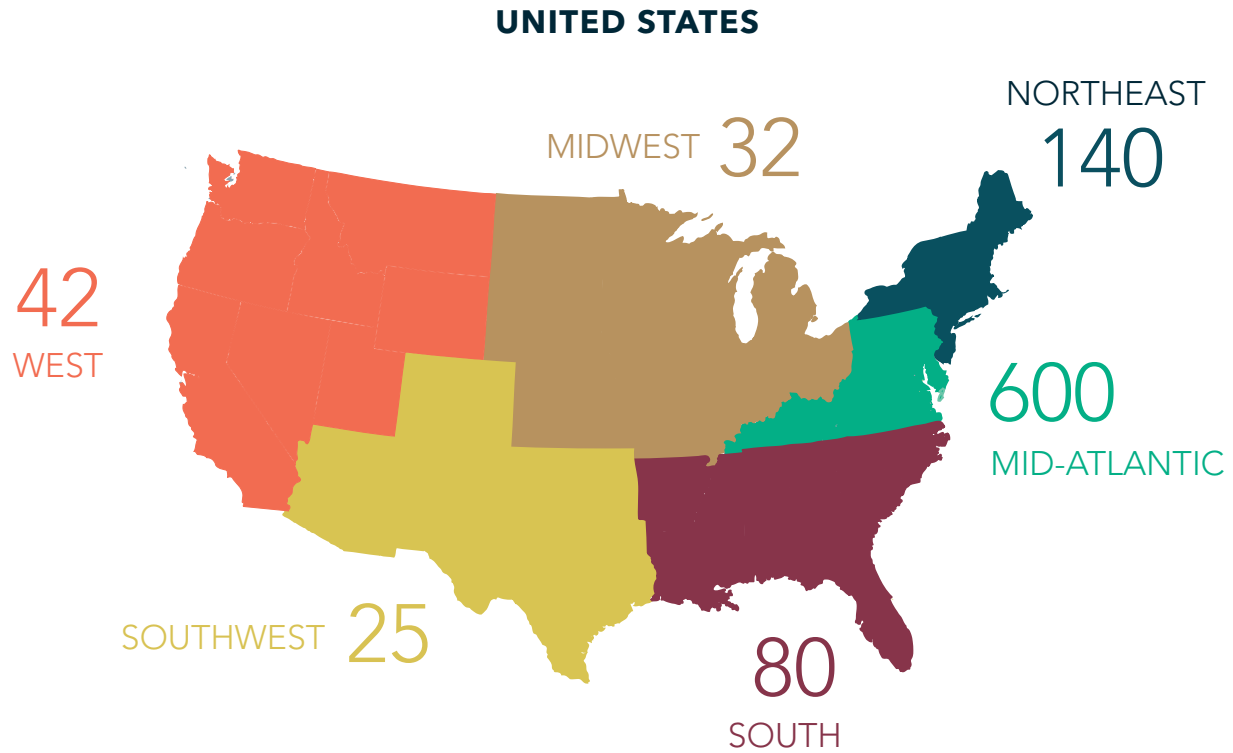


Students enrolled in a wide variety of programs, including (but not limited to): Medicine, Accounting, Psychology, Public Policy, Education, Law, Government, Counseling, Physics, Engineering, and Public Health. Pursuing 26 different graduate degrees, most respondents are pursuing the following:



# First Destination Geographic Distribution

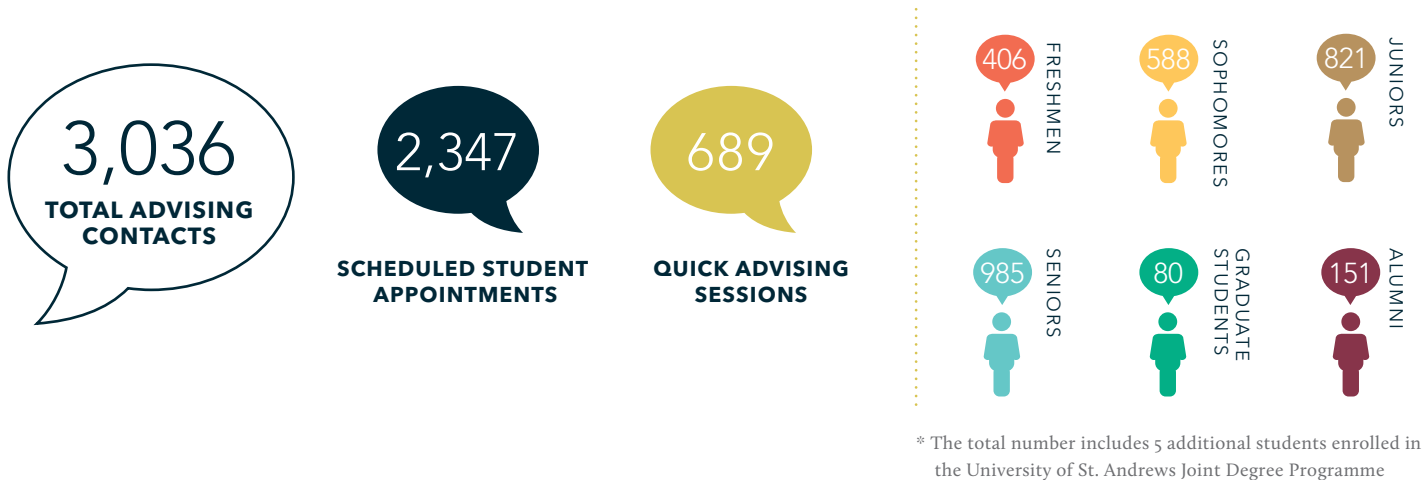
\* Derived from respondents who provided their geographic location for employment and graduate school



# Student Engagement

The Cohen Career Center has created an engaging learning environment in which individual career development is strengthened and self-efficacy is realized. The Cohen Career Center served 3,036 students through Quick-Advising and Scheduled Appointments in the 2017-18 academic year.

One of the keys to successful career planning is an early start. The Cohen Career Center assists students with programs and opportunities open to all class years, majors, and areas of interest. The graphic illustrates the number of students (by academic year) that utilized Quick-Advising and Scheduled Appointments during the 2017-18 academic year.



## FUSE (Funding for Unpaid Summer Experience)

Students were funded for participation in unpaid summer internships, allowing them to gain valuable skills and work experience in a variety of industries. Students worked across seven states and in one international location.



## Tribe-In-Action Externships

49 students participated in this program which allows them to shadow professionals and gain exposure to industries they may have interest in exploring as a career. 16 sites participated in this program.



---

## *My Active Career Exploration (MACE)*

MACE is a 6-week career readiness series led by the Cohen Career Center and offered to first and second year students. This series examines a number of career readiness topics, as well as gets students in the habit of networking and developing career relationships.



**97**  
**MACE STUDENT PARTICIPATION**

---

## *Design Your Next Step*

Design Your Next Step is a 7-week series led by the Cohen Career Center and offered to sophomores, juniors, and seniors. This series utilizes design thinking as a tool for career development and planning.



**8**  
**PARTICIPANTS**

---

## *Mock Interviews*

Students participate in “mock” interviews with either advisors, employers, or industry volunteers including parents, alumni, and community partners.



**590**  
**MOCK INTERVIEWS**

---

## *Workshops*

Workshops are hosted by the Cohen Career Center and are designed to teach students relevant career development topics including resumes, cover letters, job searching, interviewing, networking, and more.



**2,286**  
**STUDENT ATTENDEES**  
**113**  
**WORKSHOPS**

---

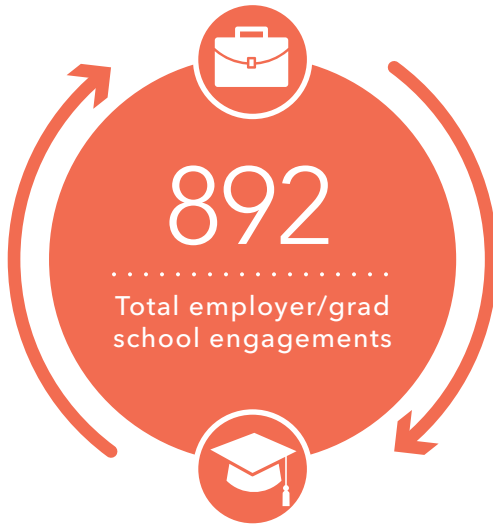
## *Influencer Postcard*

All faculty and staff on campus play a major role in supporting students’ career success. Members of the class of 2017 identified 517 different W&M faculty and staff members as being “Most influential to their William & Mary education.” Each year the Cohen Career Center recognizes these individuals with a postcard highlighting this distinction. We are partners in the career success of our students!



**517**  
**POSTCARDS SENT TO FACULTY & STAFF**

# Recruiting Engagement



\*Numbers represent all touchpoints between recruiters and students, not unique values. Total includes fairs, information sessions, interview days, OCR employers, externship sites, and employer mock interviews.

## Annual Recruitment Events

### INFORMATION SESSIONS

137 sessions | 2,335 attendees

### MEET THE FIRMS 2017

41 employers | 403 students

### GRADUATE & PROFESSIONAL SCHOOL FAIR 2017

97 programs | 185 students

### FALL DIVERSITY BRUNCH 2017

16 employers | 107 students

### FALL RECRUITING CONSORTIUM 2017

22 employers | 7 students

### K12 EDUCATION INTERVIEW DAY 2018

49 employers | 54 students

### GOVERNMENT/NON-PROFIT EXPO 2018

97 employers | 84 students

## CAREER FAIRS

FALL 2017

1,077 students | 77 employers

\*RECORD ATTENDANCE

SPRING 2018

593 students | 70 employers

# On-Campus Recruiting

Every semester employers come to campus to interview W&M students for jobs and internships. All majors are recruited and a variety of employers are represented.



**ON-CAMPUS  
RECRUITING SCHEDULES** 118

**INTERVIEWS  
CONDUCTED** 1,238



## TribeCareers

TribeCareers is the hub for job and internship postings for William & Mary students. Our Employer Development Team works hard to introduce students to a wide variety of opportunities both in Virginia and around the world.

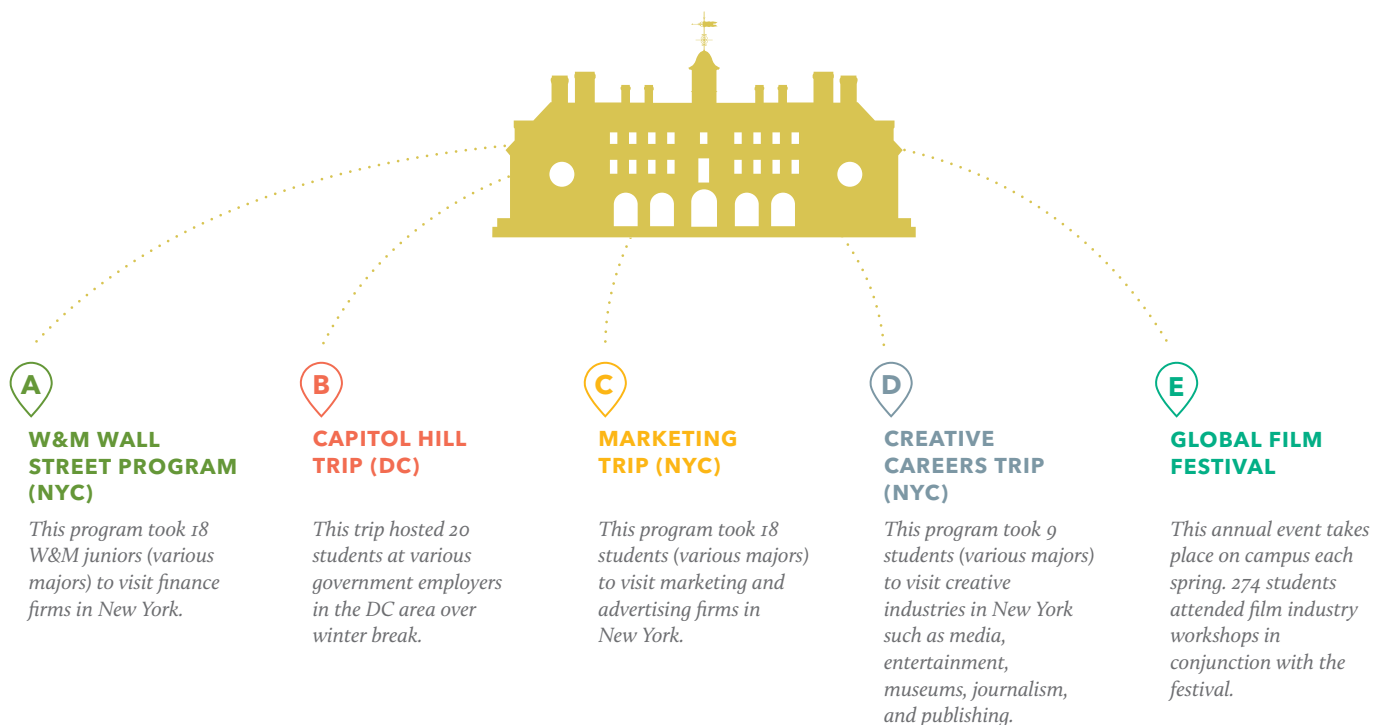
1122 **EMPLOYERS**

3528 **JOB POSTINGS**

10009 **STUDENT  
APPLICATIONS**

## Cohen Off-Campus

Each year the Cohen Career Center hosts a number of trips where students from any academic background can attend site visits and gain in-depth industry exposure.



**COHEN CAREER CENTER**

William & Mary Cohen Career Center  
P.O. Box 8795  
Williamsburg, VA 23187-8795

[www.wm.edu/offices/career](http://www.wm.edu/offices/career)  
757-221-3231

facebook: /WMCareerCenter  
Twitter: @wmcareer  
Instagram: @cohencareercenter